

Proposed Elevation of PV Panels

Panels will be approximately 1m X 1.7m in size and will be mounted very close to the roof surface level, at a 10° tilt. The parapet wall along the roof rises to approximately 350mm with approximately a 2m offset of the panel from the roof edge, therefore the panels will not be visibly intrusive on the existing building.



Figure 1: Example of Solar PV Panels with a Flat Roof Mounting System

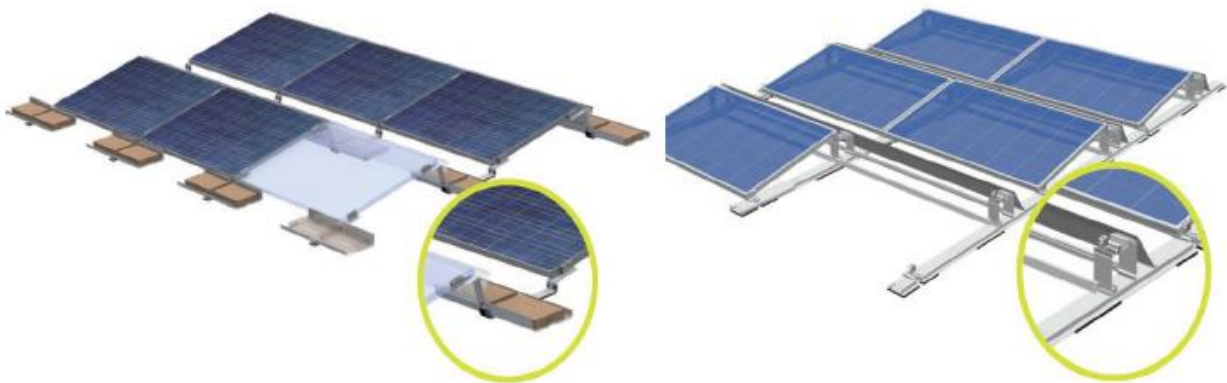


Figure 2: PV, Flat Roof Mounting Systems