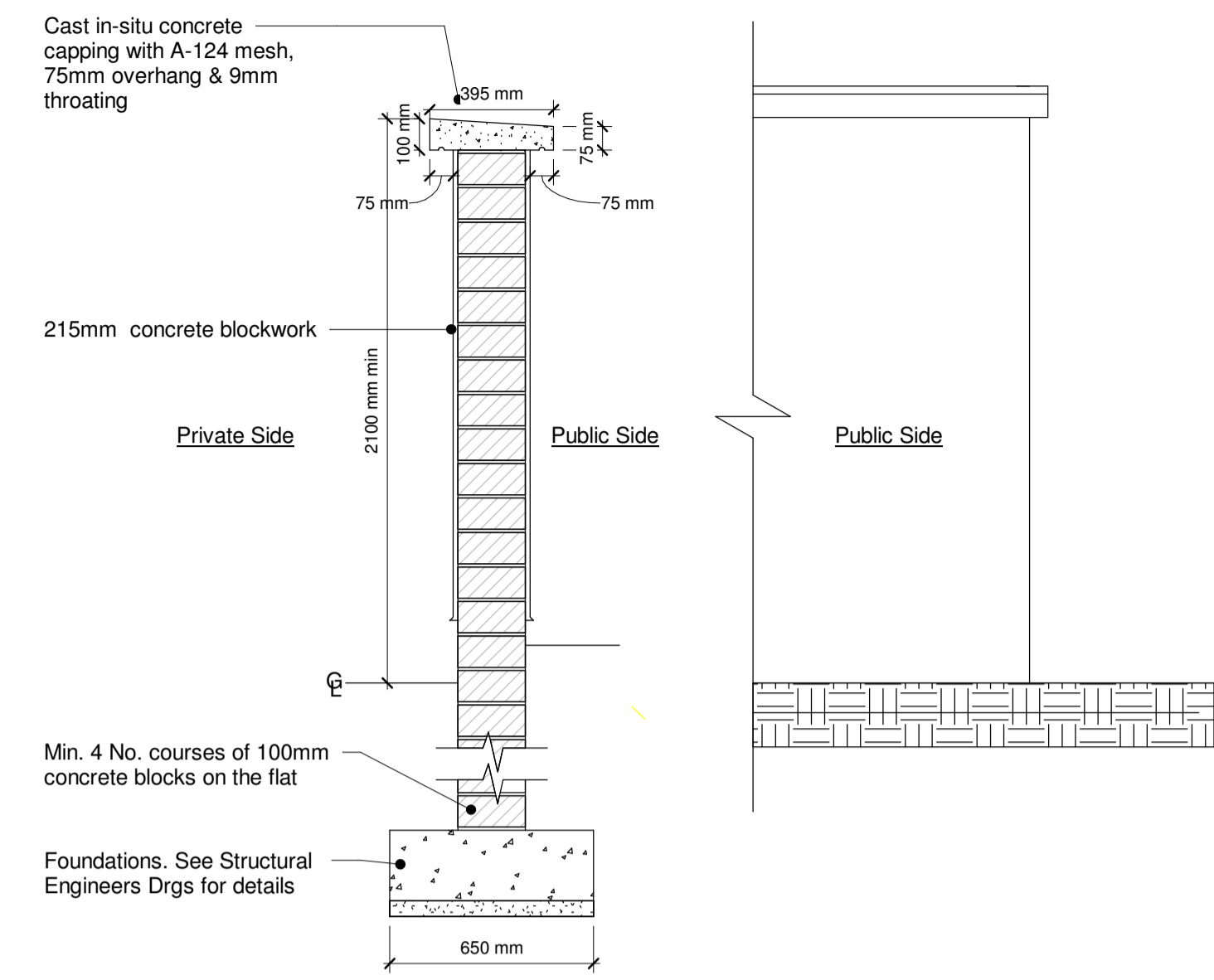
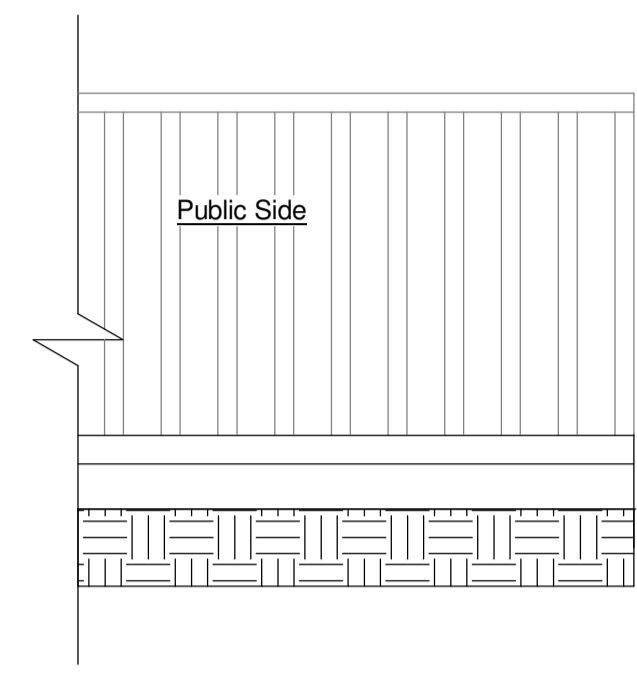
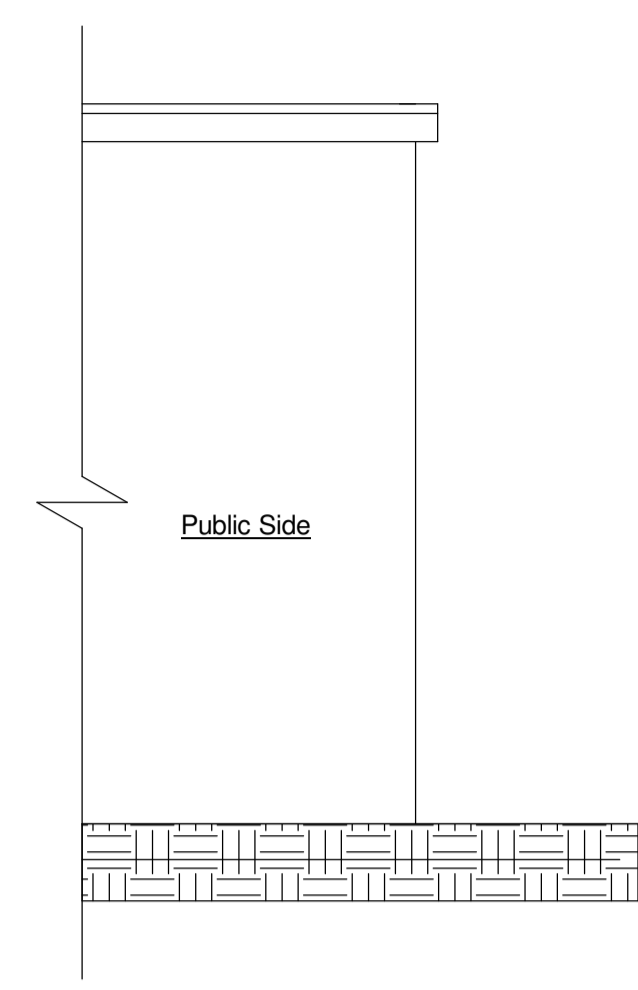


1 Wall Type 1
1 : 20



2 Wall Type 2
1 : 20



PART 8 - PLANNING
NOT FOR CONSTRUCTION

Revision Schedule

Rev No.	Rev Description	Rev Date	Issued by	Issued to

Rebuilding Ireland
Action Plan for Housing and Homelessness

Funded by the Irish Government under Rebuilding Ireland, Action Plan for Housing and Homelessness.

WESTMEATH HOUSING DESIGN TEAM
WESTMEATH COUNTY COUNCIL,
CIVIC CENTRE, CHURCH ST.,
ATHLONE, N37 P2T5
Phone: 05064 42100
Web: www.westmeathcoco.ie

PROJECT:
CONSTRUCTION OF HOUSING UNITS AT DALTON PARK, MULLINGAR, CO. WESTMEATH

TITLE:
TYPICAL BOUNDARY TREATMENTS

Scale: 1 : 20 @ A1 **Datum:** MALIN **Date:** 04/21/21

Drawing No: 120_03_015 **Stage:** Part 8 **Revision:**

Surveved	Drawn	Checked	Approved
MK	Author	Checker	Approver

File Name and Directory:
H:\CAPITAL HOUSING DESIGN TEAM\1-Capital Schemes\120 Dalton Park\Drawings\03_Part 8\Site\Dalton Park_Site Layout_Part 8_Markings Layout.rvt