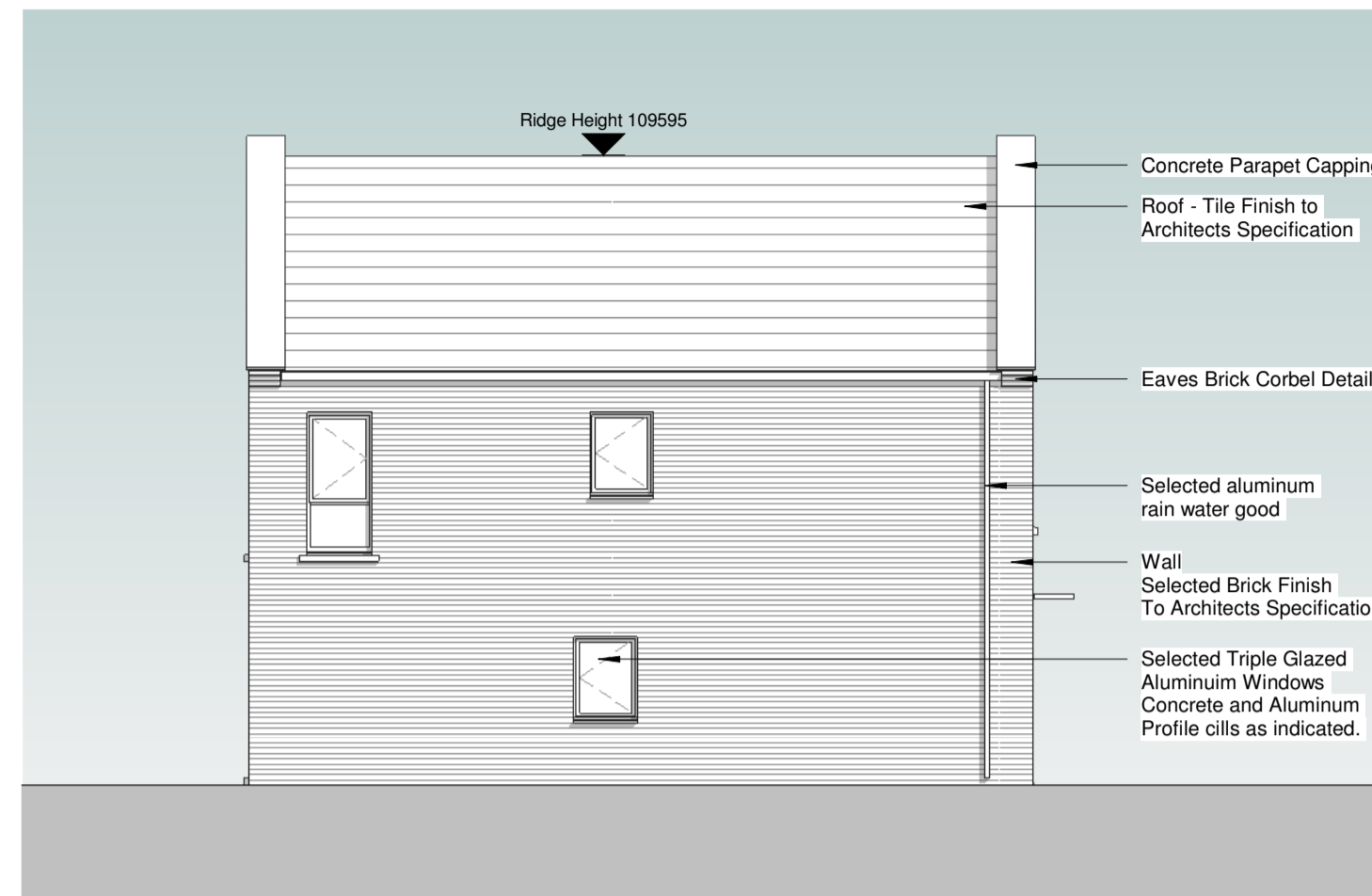
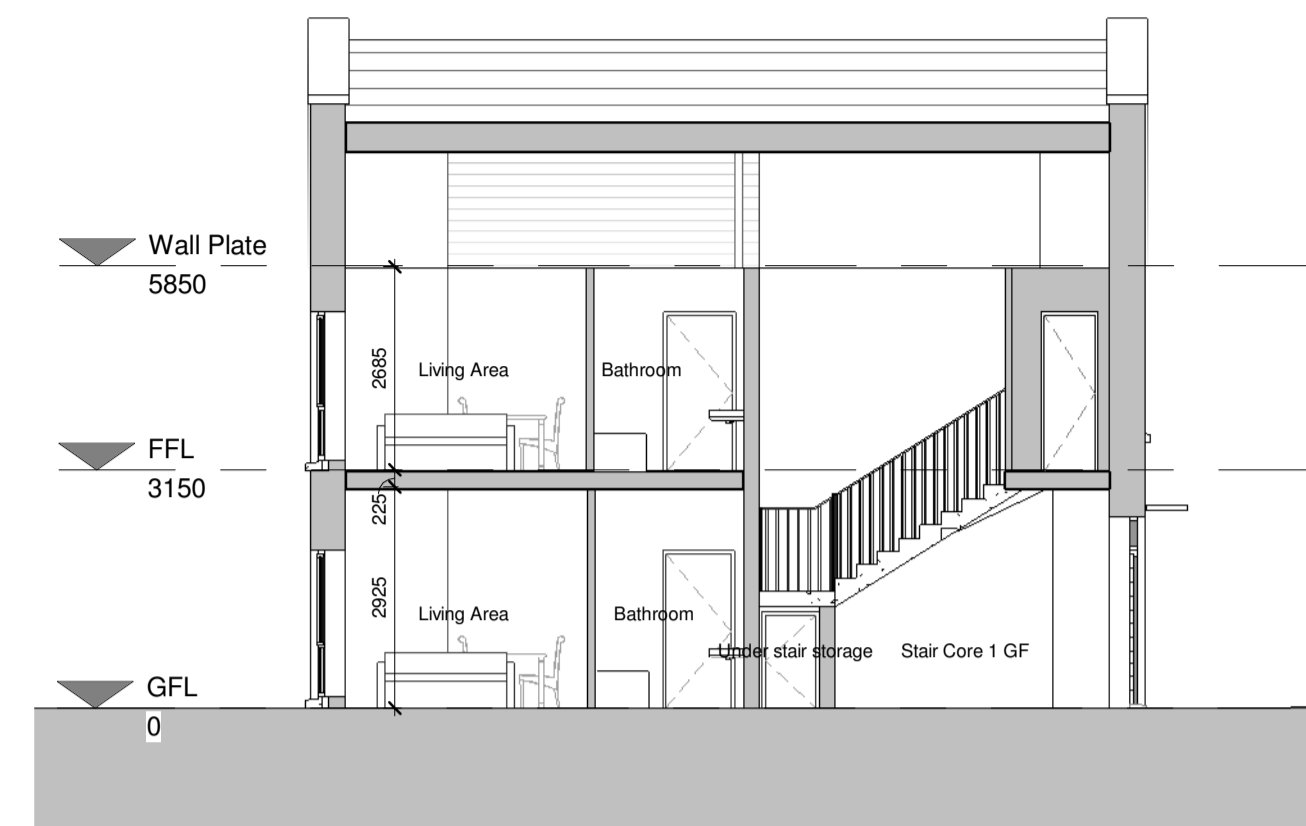


4 South East Elevation
1 : 100



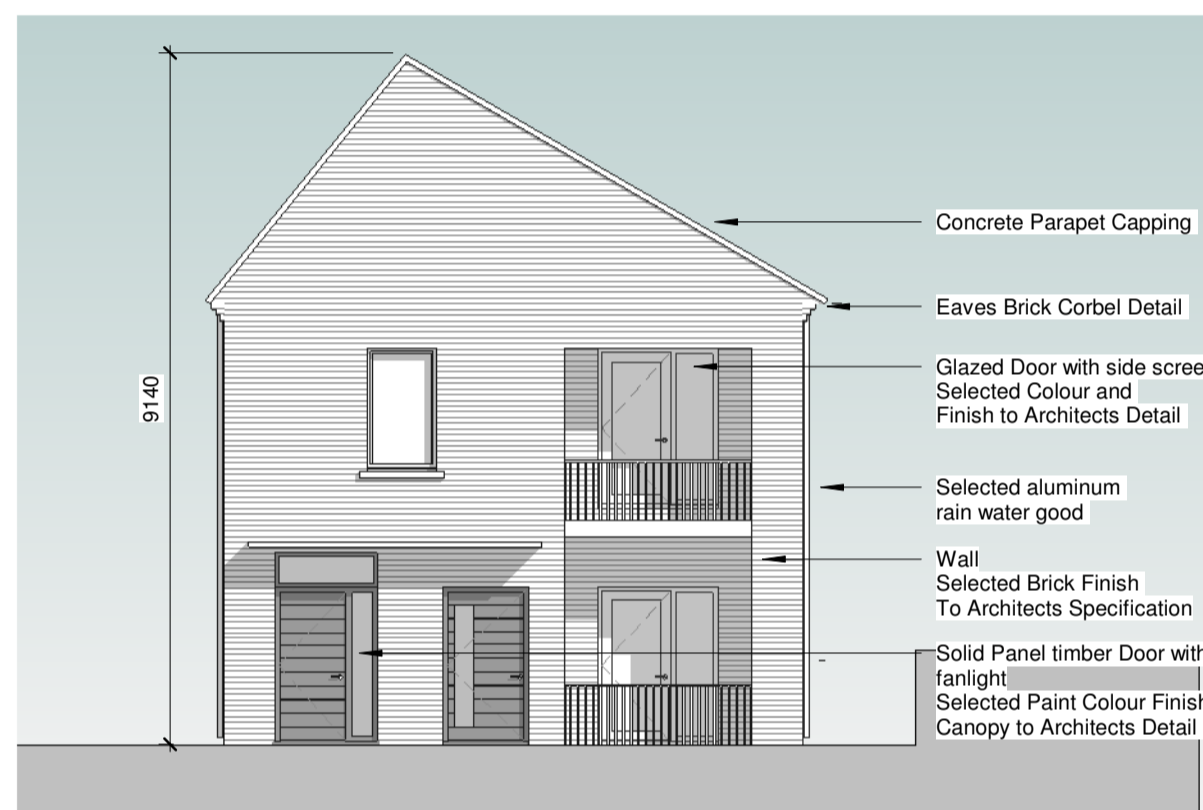
5 North East Elevation
1 : 100



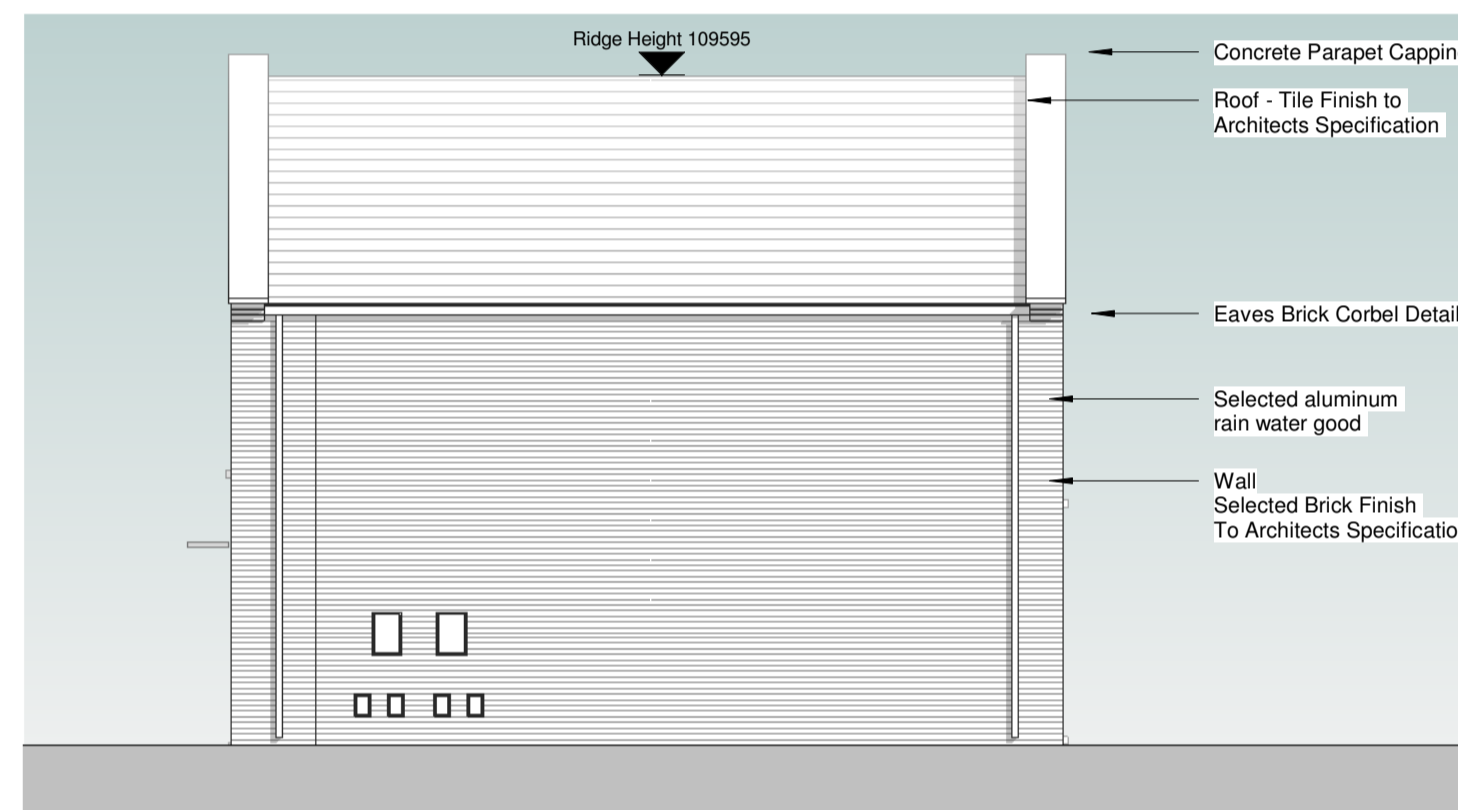
8 Section 1
1 : 100

ACCOMMODATION UNITS AREA SCHEDULE					
UNIT NUMBER	LOCATION	TYPE	FLOOR LEVEL	AREA (m ²)	REQUIRED MIN AREA (m ²)
Apartment 12	BLOCK 3	1 Bed, 2 Person	Ground Floor	51.23m ²	45m ²
Apartment 13	BLOCK 3	1 Bed, 2 Person	First Floor	49.05m ²	45m ²

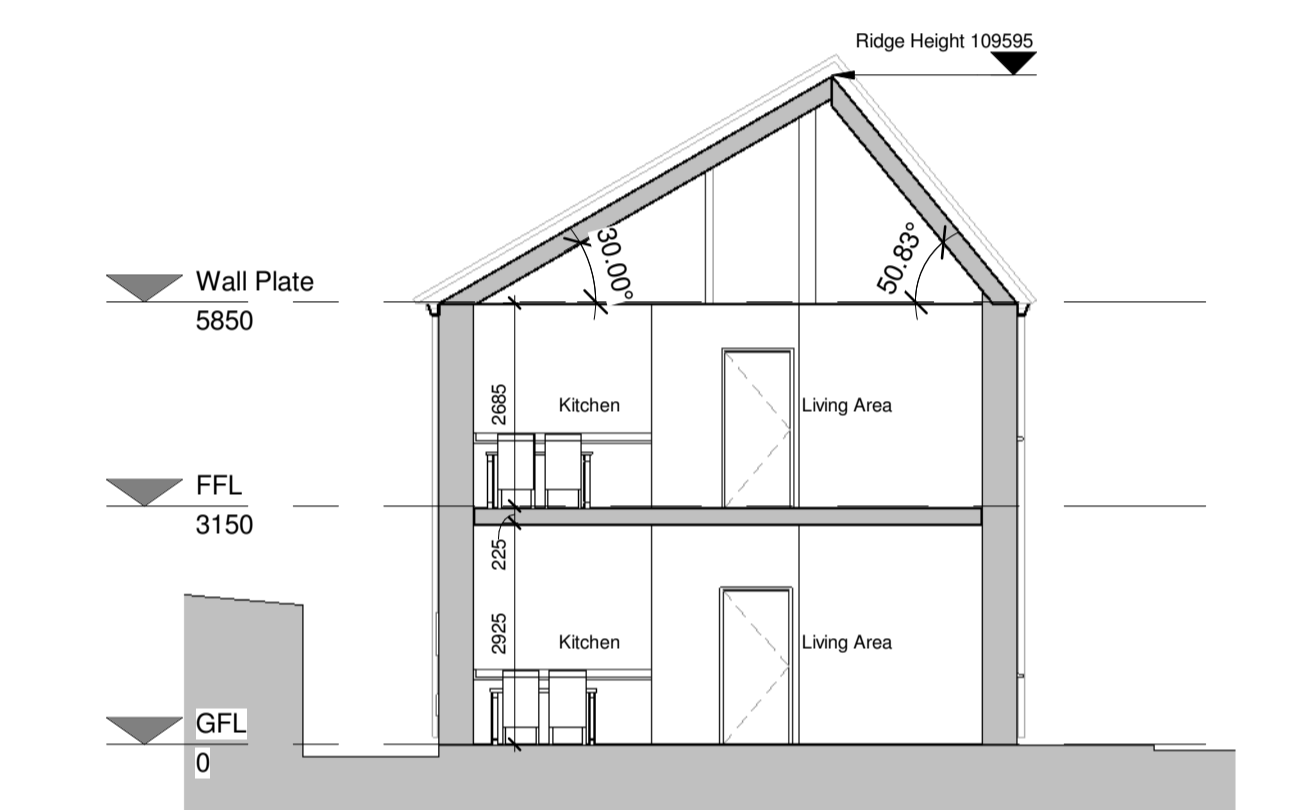
Apartments designed in accordance with Sustainable Urban Housing: Design Guides for New Apartments & Guidelines for Planning Authorities issued under Section 28 of the Planning and Development Act, 2000 (as amended) December 2020



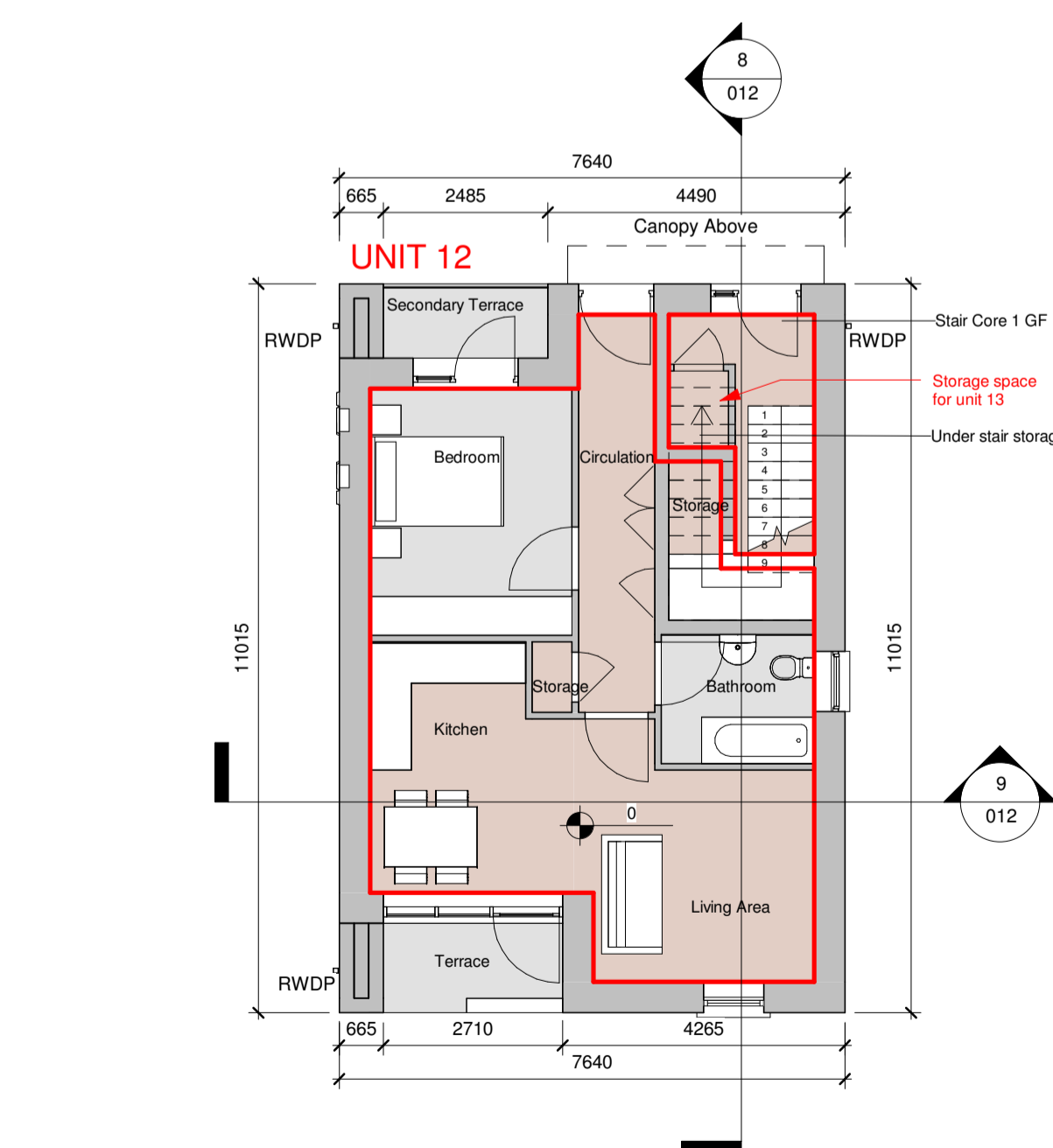
6 North West Elevation
1 : 100



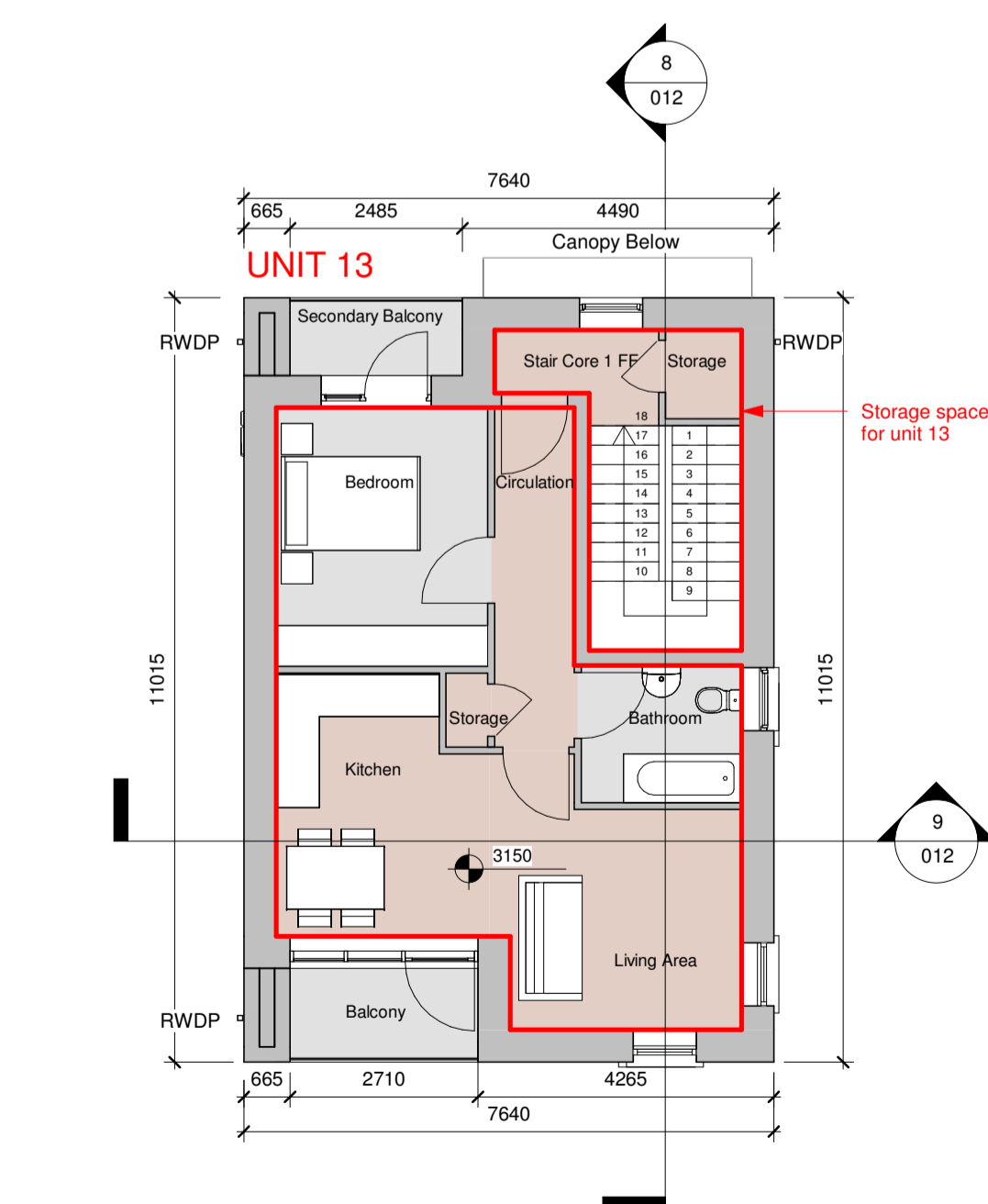
7 South West Elevation
1 : 100



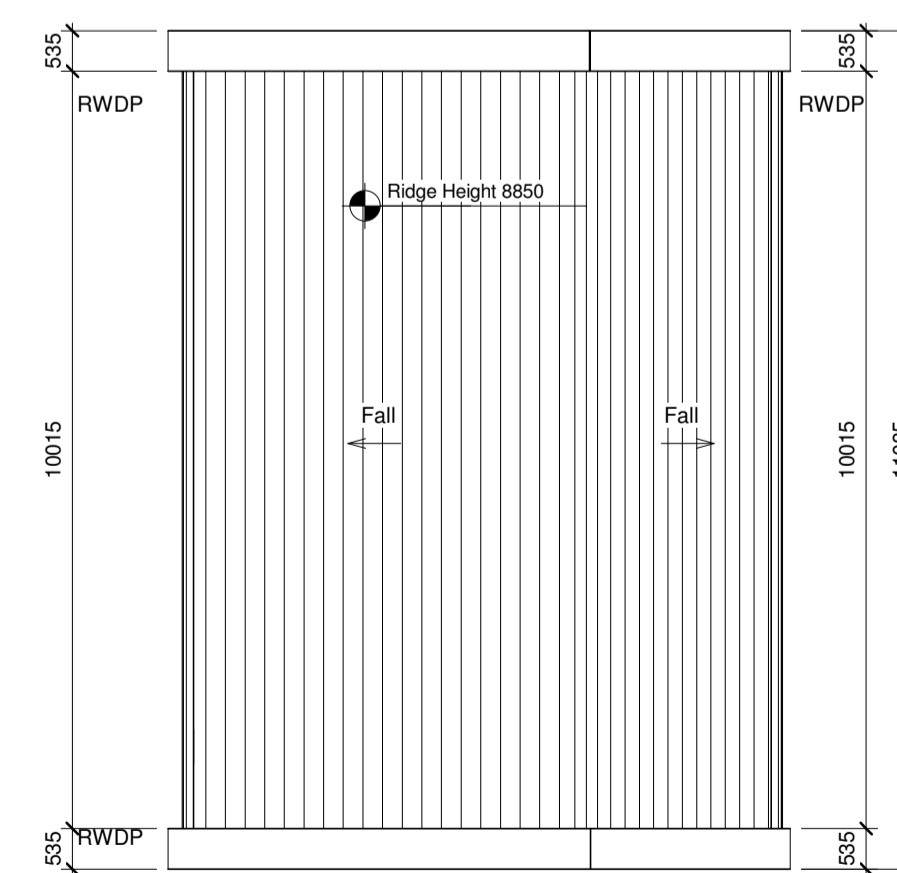
9 Section 2
1 : 100



1 GFL (Unit 12)
1 : 100



2 FFL (Unit 13)
1 : 100



3 Roof Plan
1 : 100

PART 8 - PLANNING
NOT FOR CONSTRUCTION

Revision Schedule

Rev No.	Rev Description	Rev Date	Issued by	Issued to

Rebuilding Ireland
Action Plan for Housing and Homelessness

Funded by the Irish Government under Rebuilding Ireland, Action Plan for Housing and Homelessness.

WESTMEATH HOUSING DESIGN TEAM
WESTMEATH COUNTY COUNCIL,
CIVIC CENTRE, CHURCH ST.,
ATHLONE, N37 P2T5
Phone: 05064 42100
Web: www.westmeathcoco.ie

PROJECT:
CONSTRUCTION OF HOUSING UNITS AT DALTON PARK, MULLINGAR

TITLE:
BLOCK 3 UNITS 12 & 13 PLANS, SECTIONS AND ELEVATIONS

Scale: As indicated @ A1 **Datum:** MALIN **Date:** 06/05/22

Drawing No: 120_03_012 **Stage:** PART 8 **Revision:**

Surveved	Drawn	Checked	Approved
MK	AC/MK	BC/TOH	PH

File Name and Directory:
H:\CAPITAL HOUSING DESIGN TEAM\1-Capital Schemes\120 Dalton Park\Drawings\03_Part 8\House Types\Dalton Park_Block 3_Part 8.rvt