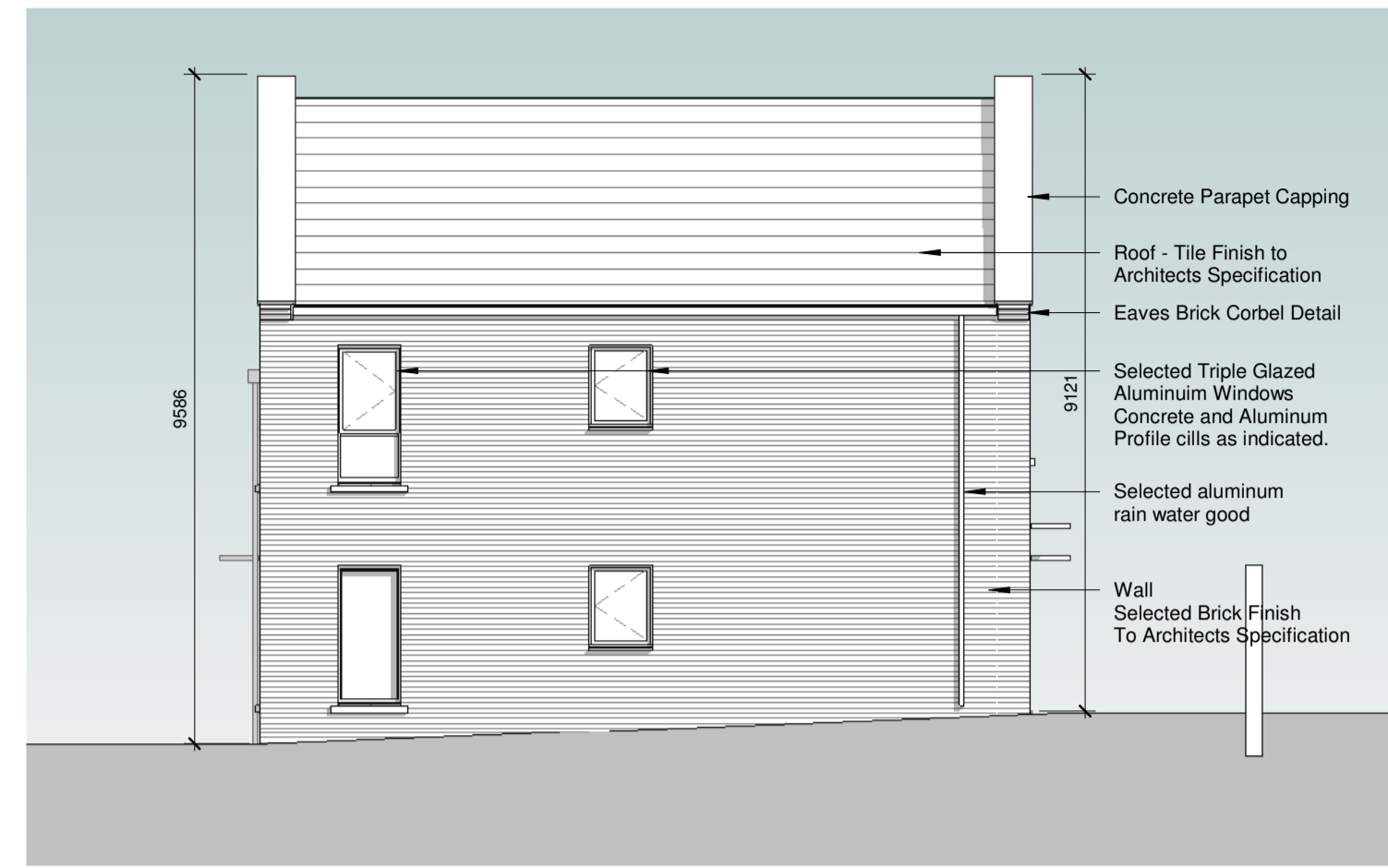




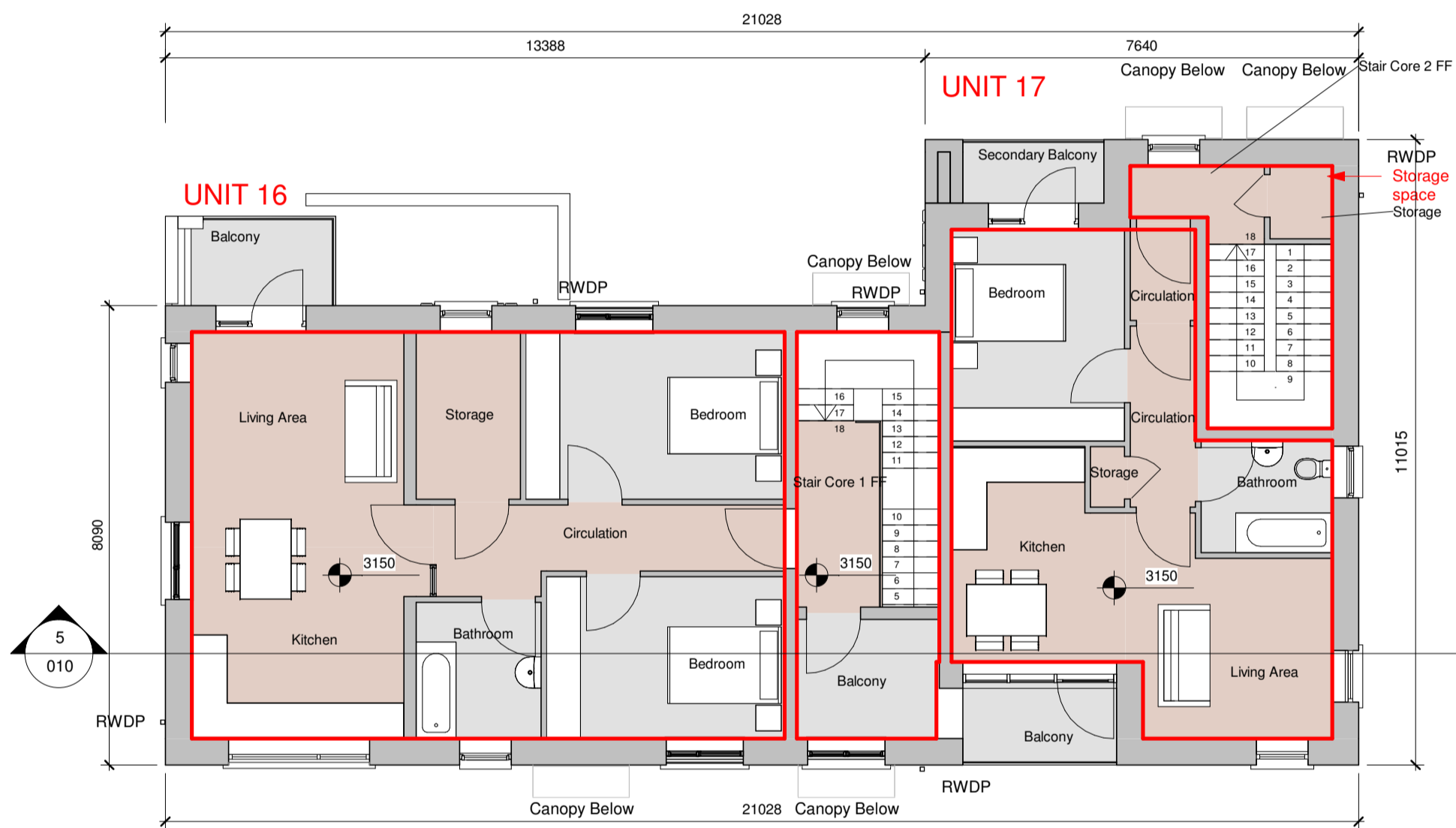
1 North East Elevation  
1 : 100



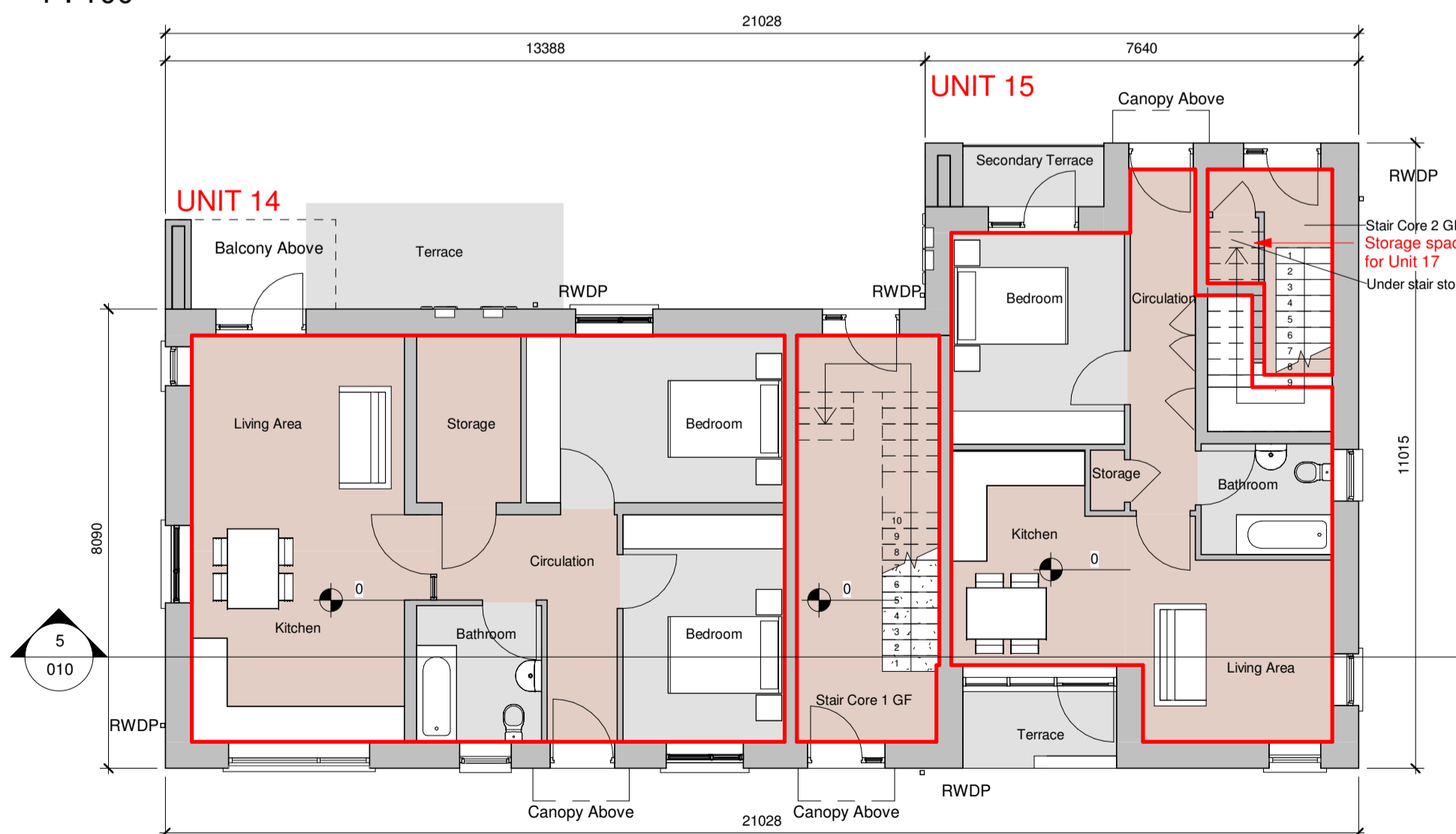
2 North West Elevation  
1 : 100



3 South East Elevation  
1 : 100



8 First Floor Plan  
1 : 100



7 Ground Floor Plan  
1 : 100



4 South West Elevation  
1 : 100



5 Section 1  
1 : 100

ACCOMMODATION UNITS AREA SCHEDULE					
UNIT NUMBER	LOCATION	TYPE	FLOOR LEVEL	AREA (m <sup>2</sup> )	REQUIRED MIN AREA (m <sup>2</sup> )
14	BLOCK 2	2 Bed, 4 Person	Ground Floor	74.81m <sup>2</sup>	73m <sup>2</sup>
15	BLOCK 2	1 Bed, 2 Person	Ground Floor	51.24m <sup>2</sup>	45m <sup>2</sup>
16	BLOCK 2	2 Bed, 4 Person	First Floor	74.81m <sup>2</sup>	73m <sup>2</sup>
17	BLOCK 2	1 Bed, 2 Person	First Floor	49.02m <sup>2</sup>	45m <sup>2</sup>

Apartments designed in accordance with Sustainable Urban Housing: Design Guides for New Apartments Guidelines for Planning Authorities issued under Section 28 of the Planning and Development Act, 2000 (as amended) December 2020

**PART 8 - PLANNING**  
NOT FOR CONSTRUCTION

Revision Schedule

Rev No.	Rev Description	Rev Date	Issued by	Issued to

**Rebuilding Ireland**  
 Action Plan for Housing and Homelessness  
 Funded by the Irish Government under Rebuilding Ireland, Action Plan for Housing and Homelessness.

**WESTMEATH HOUSING DESIGN TEAM**  
 WESTMEATH COUNTY COUNCIL,  
 CIVIC CENTRE, CHURCH ST.,  
 ATHLONE, N37 P2T5  
 Phone: 05064 42100  
 Web: www.westmeathcoco.ie

**PROJECT:**  
 CONSTRUCTION OF HOUSING UNITS AT DALTON PARK, MULLINGAR

**TITLE:**  
 BLOCK 2 UNITS 14 - 17 PLANS, SECTION AND ELEVATIONS

**Scale:** As indicated @ A1  
**Datum:** MALIN  
**Date:** 06/05/22

**Drawing No:** 120\_03\_010  
**Stage:** PART 8  
**Revision:**

Surveved	Drawn	Checked	Approved
MK	AC/MK	BC/TOH	PH

**File Name and Directory:**  
 H:\CAPITAL HOUSING DESIGN TEAM\1-Capital Schemes\120 Dalton Park\Drawings\03\_Part 8\House Types\Dalton Park\_Block 2\_Part 8.rvt