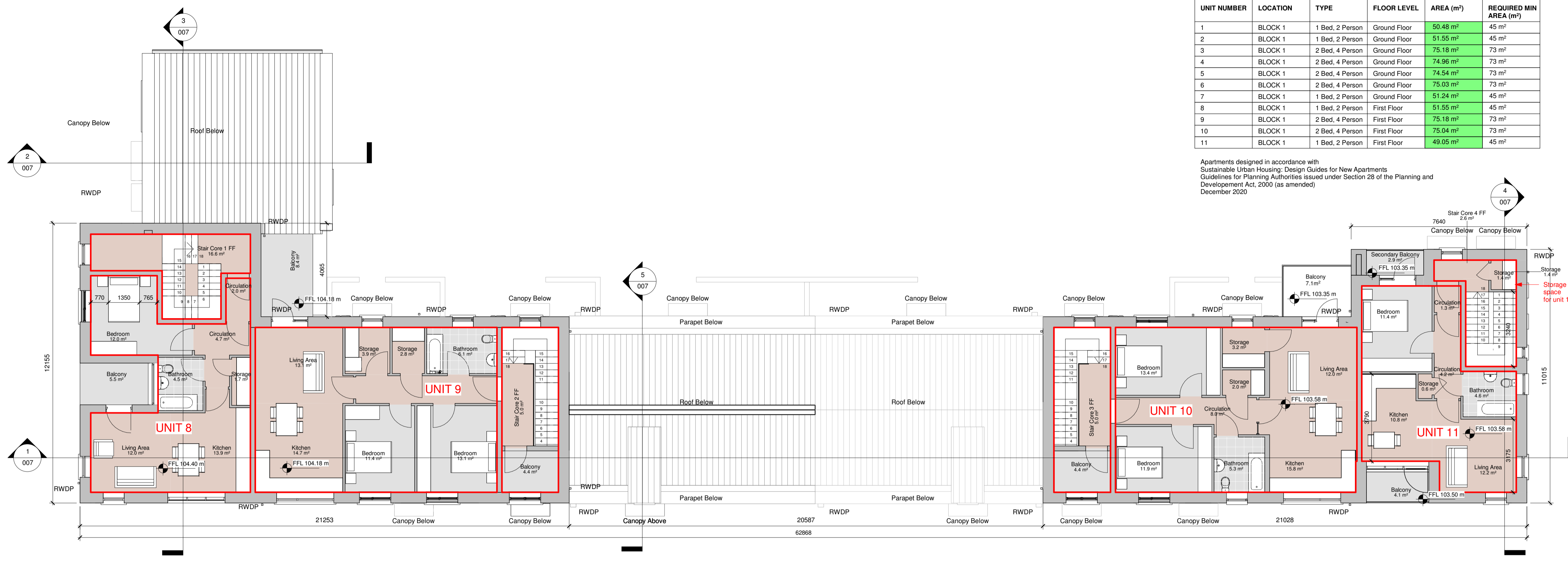
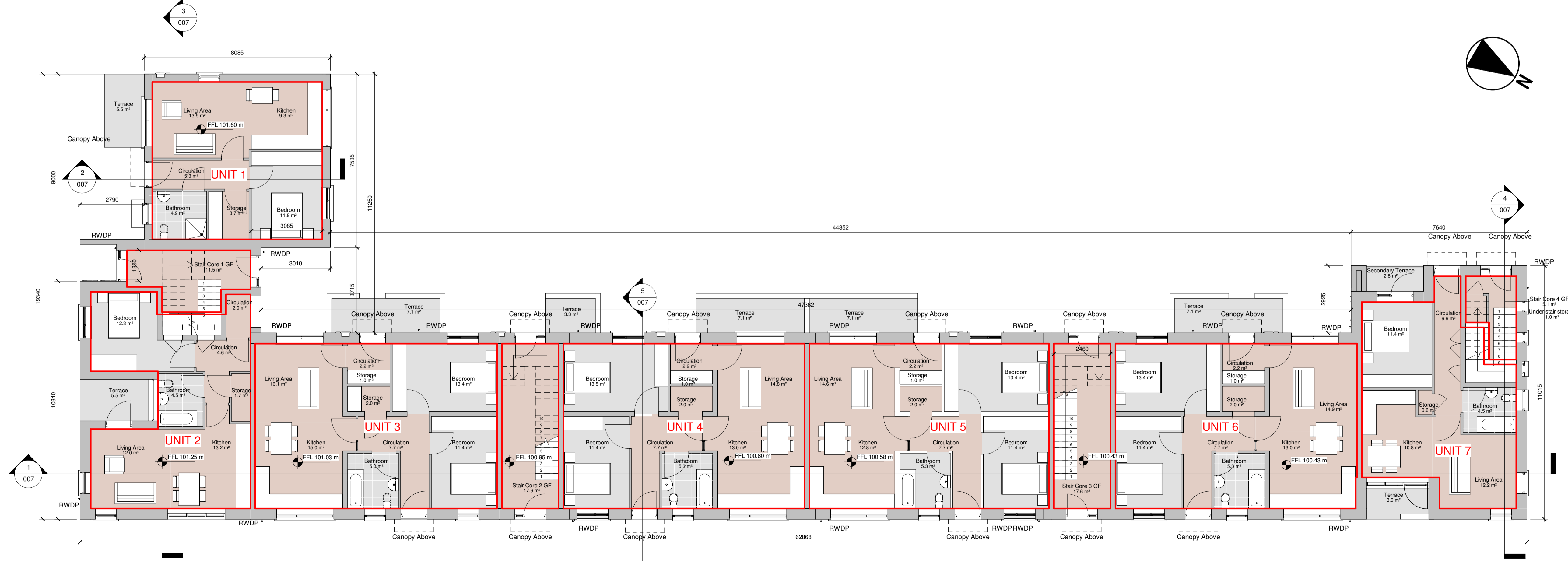


ACCOMMODATION UNITS AREA SCHEDULE					
UNIT NUMBER	LOCATION	TYPE	FLOOR LEVEL	AREA (m ²)	REQUIRED MIN AREA (m ²)
1	BLOCK 1	1 Bed, 2 Person	Ground Floor	50.48 m ²	45 m ²
2	BLOCK 1	1 Bed, 2 Person	Ground Floor	51.55 m ²	45 m ²
3	BLOCK 1	2 Bed, 4 Person	Ground Floor	75.18 m ²	73 m ²
4	BLOCK 1	2 Bed, 4 Person	Ground Floor	74.96 m ²	73 m ²
5	BLOCK 1	2 Bed, 4 Person	Ground Floor	74.54 m ²	73 m ²
6	BLOCK 1	2 Bed, 4 Person	Ground Floor	75.03 m ²	73 m ²
7	BLOCK 1	1 Bed, 2 Person	Ground Floor	51.24 m ²	45 m ²
8	BLOCK 1	1 Bed, 2 Person	First Floor	51.55 m ²	45 m ²
9	BLOCK 1	2 Bed, 4 Person	First Floor	75.18 m ²	73 m ²
10	BLOCK 1	2 Bed, 4 Person	First Floor	75.04 m ²	73 m ²
11	BLOCK 1	1 Bed, 2 Person	First Floor	49.05 m ²	45 m ²

Apartments designed in accordance with Sustainable Urban Housing: Design Guides for New Apartments Guidelines for Planning Authorities issued under Section 28 of the Planning and Development Act, 2000 (as amended) December 2020



2 First Floor Plan
1 : 100



1 Ground Floor Plan
1 : 100

PART 8 - PLANNING
NOT FOR CONSTRUCTION

Revision Schedule				
Rev No.	Rev Description	Rev Date	Issued by	Issued to

Funded by the Irish Government under Rebuilding Ireland, Action Plan for Housing and Homelessness.

WESTMEATH HOUSING DESIGN TEAM
WESTMEATH COUNTY COUNCIL,
CIVIC CENTRE, CHURCH ST.,
ATHLONE, N37 P2T5
Phone: 05664 42100
Web: www.westmeathcoco.ie

PROJECT:
CONSTRUCTION OF HOUSING UNITS AT DALTON PARK, MULLINGAR

TITLE:
BLOCK 1_UNITS 1,2,3,4,5,6,7,8,9,10 & 11_PLANS

Scale: As indicated @ A1
Datum: MALIN
Date: 06/05/22

Drawing No: 120_03_006
Stage: PART 8
Revision:

Surveied	Drawn	Checked	Approved
MK	AC/MK	BC/TOH	PH

File Name and Directory:
H:\CAPITAL HOUSING DESIGN TEAM\150 Dalton Park\Drawings\03_Part 8\House Types\Dalton Park_Block 1_Part 8_Revision 1_03plan.rvt