



Pedestrian and Cycle Link from
Killucan/Rathwire to
The Royal Canal Greenway
at
Thomastown, Co Westmeath

PROJECT EXECUTION PLAN

August 2021

Table of Contents

- 1. Introduction 3
 - 1.1. Project Details 3
 - 1.2. Approving Authority 4
 - 1.3. Sponsoring Agency 4
 - 1.4. Project Manager 5
 - 1.5. Planning, Design and Construction 6
- 2. Project Milestones and Deliverables 8
 - 2.1. Milestones 8

1. Introduction

This Project Execution Plan (PEP) for the Pedestrian and Cycle link from Killucan Rathwire to the Royal Canal Greenway, outlines the management of the project and states the policies and procedures for Project delivery. This report's main purpose is to provide a framework for all those directly engaged during the design, procurement, implementation, and completion of the Project.

This project is to create a 1.7km walking and cycling linkage between Killucan/ Rathwire village and the Royal Canal Greenway by the construction of a surfaced footpath/cycleway from Thomastown to Killucan/Rathwire together with the installation of associated signage and cycle parking facilities in the town centre.

The proposed works comprise of the following:-

- Construction of a 3m wide paved pedestrian and cycleway
- Erection of new boundary fences and hedges.
- Construction of a pedestrian and cycleway bridge
- Signage (Mapboards, tourist information) and Public Lighting where required.
- Cycle parking facilities i.e benches, cycle stands etc.

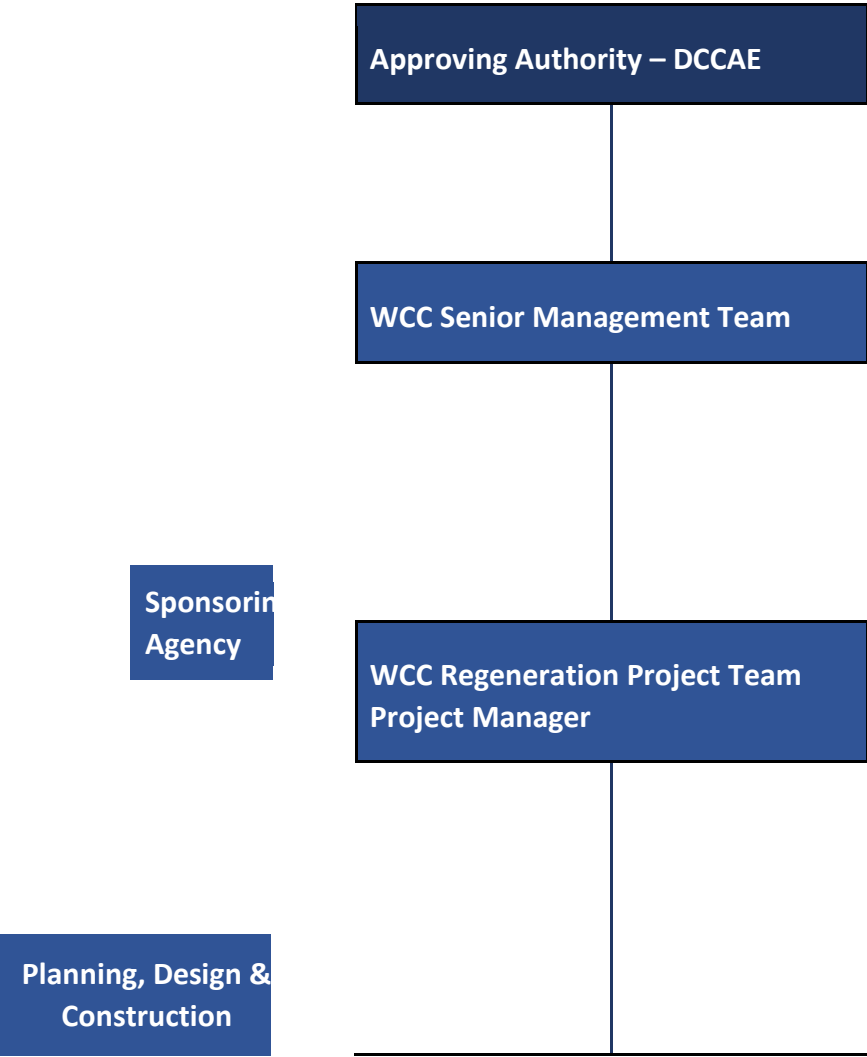
This section of the PEP details key authorities, key Project roles, and their responsibilities for Project development and delivery.

1.1. Project Details

Project Name	Pedestrian and Cycle link from Killucan Rathwire to the Royal Canal Greenway
Project Sponsor	Just Transition Fund 2020
Project Client	Westmeath County Council (WCC)
Current Project Phase	0
Project Designers (Stages 1-4)	Westmeath

Table 1. 1 Project Management Structure

Key groups within the Project Management process are highlighted in the figure and sections below:



WCC Mullingar Kinnegad Municipal District

Figure 1. 1 Project Management Structure

1.2. Approving Authority

Department of Communications, Climate Action & Environment (DCCA) are the Approving Authority in line with the Public Spending Code.

1.3. Sponsoring Agency

Westmeath County Council are the Sponsoring Authority in line with the Public Spending Code. They have overall responsibility for the proper appraisal, planning and management (including current expenditure) to ensure the project proceeds along the lines approved by the Approving Authority. The Sponsoring Agency's functions include, but are not limited to, the following:

- Nominating and appointing a Project Manager;
- Managing the overall planning and delivery of the Project;
- Carrying out the duties of the Client as set out in Health and Safety At Work (Construction) Regulations, 2013, Appointing a competent Project Supervisor Design Process (PSDP) and a competent Project Supervisor Construction Stage (PSCS) when required;
- Obtaining approval from the Approving Authority for the Project proposals and for any changes to Scope;
- Acting as the Contracting Authority to procure the Contractors to construct the Project; and
- Assuming the role of Contracting Authority for Public Works Contracts.

1.4. Project Manager

Deirdre Reilly of Westmeath County Council is the appointed Project Manager. She is responsible for the execution of decisions taken by the Sponsoring Agency regarding delivery, quality and budget. The Project Managers duties include, but are not limited to, the following:

- Overall responsibility for the management, delivery and implementation of the Project;
- The Project Manager shall be responsible for ensuring that the requirements of the Capital Works Management Framework, and the Public Spending Code are adhered.
- The Project Manager shall prepare the Project Execution Plan and ensure that it is updated before the completion of each stage and sub-stage.
- Managing the procurement and appointment of Technical Advisors, Service Providers and Contractors, as required;
- Liaising with the landowners in relation to the dedication agreements, as required;
- Liaising with and providing status reports to the Westmeath County Council Management Team ensuring the Project meets their needs; and
- Obtaining Sanctioning Authority approvals and other statutory approvals (Part 8) necessary to progress the Project.

1.5. Planning, Design and Construction

Westmeath County Council have completed the preliminary design of the project. See the Cycleway Drawings Part VIII Booklet.

Following a review of the Preliminary Documentation available in May 2021 It was determined that a Planning Consent is required, this will be obtained through the statutory procedure (Part 8). The necessary documentation will be prepared in-house by the engineering staff in the Mullingar Kinnegad Municipal District (MKMD), with specialist consultant input procured, as required.

MMKD will meet all statutory requirements in respect of Environmental Regulations and will attempt where feasible to include for ecological enhancement within the works design and to avoid or minimize all environmental impacts associated with the works. Specialist advice from a qualified Ecologist/ Environmentalist and an Appropriate Assessments Report in accordance with the EU Habitats Directive will be procured.

The MKMD will also procure sub-contractors/direct labour, provide contract supervision and oversee the handover of completed cycleway.

MKMD will undertake the role of PSDP for the Project and prepare the Preliminary Health and Safety Plan.

The Project Supervisor (Design Process) or PSDP's key role is to ensure co-ordination of the work of designers throughout the project with respect to health and safety matters of those involved or affected by the project during construction or maintenance. This will include collating relevant site information from the Client, reviewing survey information that has been commissioned and Identifying hazards arising from the design, technical, organisational, planning or time related aspects of the project and where possible, eliminate the hazards or reduce the risk in collaboration and co-operation with all the designers at the appropriate design team meetings and/or structured risk reviews.

The PSDP shall prepare a written Preliminary Safety & Health Plan for tender that will include any design assumptions, control measures or details of residual risks that need conveyed to the PSCS and dealt with proportionally in the construction stage safety and health plan.

Upon completion of the project, the PSDP shall prepare a Safety File reflecting the as built nature of the works, structural principles and record any residual risks to future construction, maintenance, cleaning, alteration or demolition. When ready, the Safety File shall be issued to the Client.

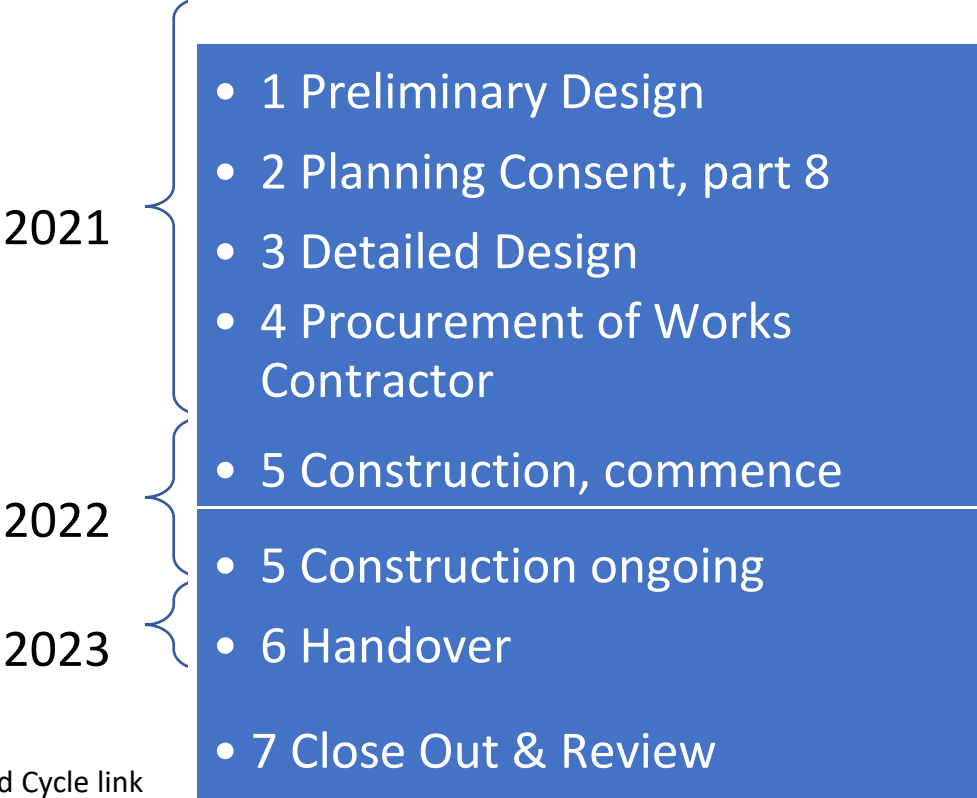
In-house Professional Services		Status
Stage 1 Preliminary Design Process	Familiarisation, Site Visit Surveys – topographical, environment, archaeology etc. Site Investigation Preliminary Design H&S Duties and PSDP	Complete
Stage 2 Statutory Process (Part 8)	Part 8 Report and drawings PSDP Duties continuing	Ready for submission
Stage 3 Detailed Design and Tender Documents	Detailed Design, drawings and specifications PSDP Duties Tender Documents for Construction	
Stage 4 Procurement of Contractor	Procurement Process Tender Assessment	
Stage 5 Construction & Handover	Site Supervision Employers Representative (ER) Handover	

Table 1.2 In-house Services

2. Project Milestones and Deliverables

This section of the PEP details the various milestones and deliverables to be achieved by the project.

2.1. Milestones



Milestones Pedestrian and Cycle link from Killucan Rathwire to the Royal Canal Greenway

