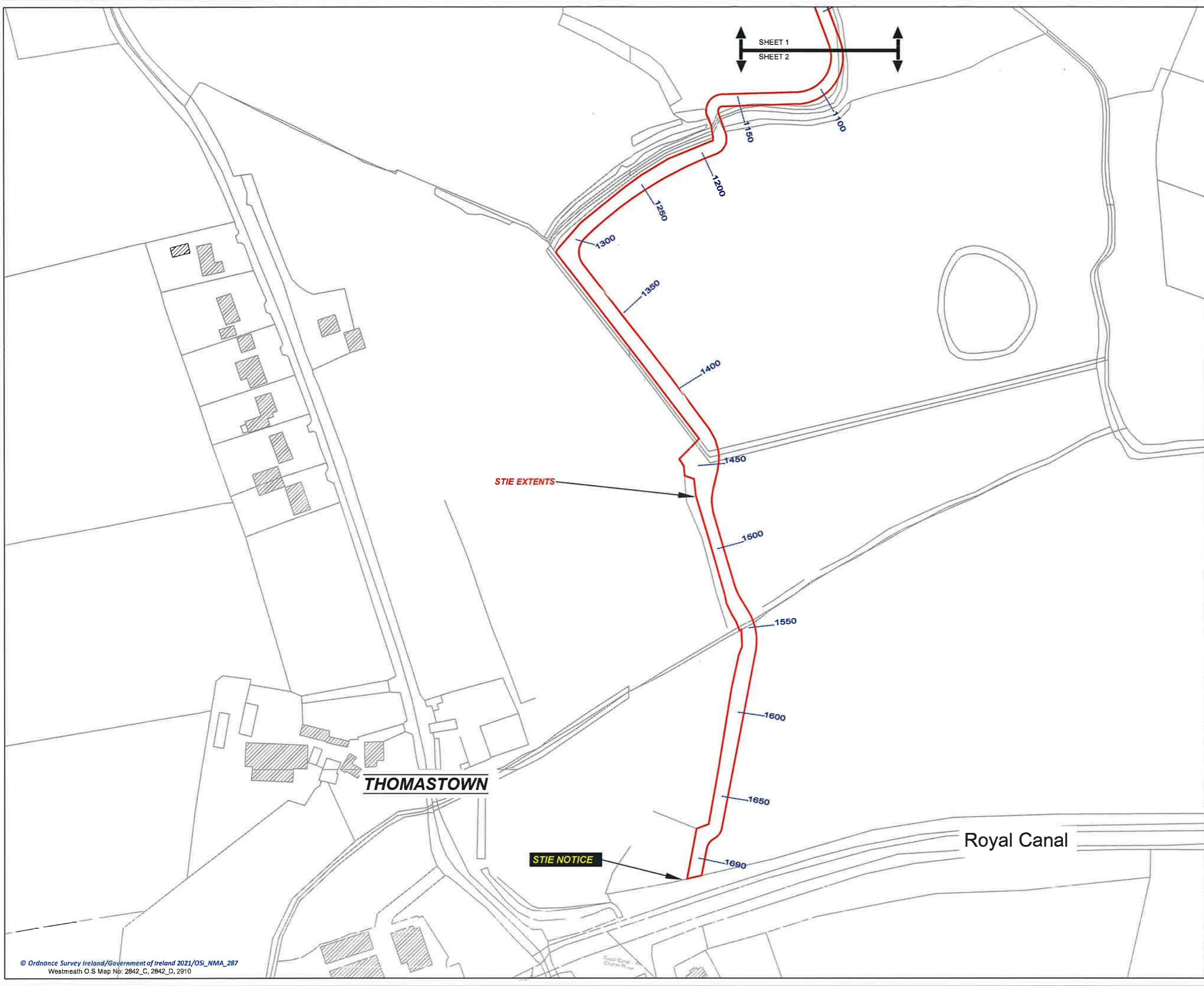


Rev	Description	Date	Chk'd	App'd
 WESTMEATH COUNTY COUNCIL Comhairle Chontae na hIarmhí				
PROJECT: RATHWIRE TO ROYAL CANAL PROPOSED PATH/CYCLEWAY				
TITLE: SITE EXTENTS LOCATION MAP (SHEET 1)				
Stage: PART VIII PLANNING		Drawing No.: 1265-2021-101		Revision: 1
Scale: 1:11000@A1		Date: 19/04/2021		Surveyed: L. SLEW
Designer: J. O'NEILL	Drawn: J. O'NEILL	Checked: J. O'NEILL	Approved: L. SLEW	
Design Office: Transportation Section Áras an Chláir An Mullcarrán, yCearr Mullingar, Co. Westmeath		LOCATION MAP.ewg J. O'NEILL TRANSPORTATION SECTION RATHWIRE TO ROYAL CANAL LINK PART VIII PLANNING		





Rev	Description	Date	Chk'd	App'd



PROJECT:
RATHWIRE TO ROYAL CANAL
PROPOSED PATH/CYCLEWAY

TITLE:
SITE EXTENTS
LOCATION MAP (SHEET 2)

Stage	Drawing No.	Revision
PART VIII PLANNING	1265-2021-102	

Boole: 111000@A1	Date: 16/04/2021	Surveyed:
Designed: P. KAVANAGH	Drawn: P. MURPHY	Checked: P. MURPHY
Approved:	Approved:	Approved:

Design Office: Transportation Section, Aras an Chontae, An Múlaigh, gCeannt, Rathw. Rathw. to Royal Canal, Linkpart VIII Planning.



RATHWIRE

SHEET 1 OF 4

SHEET 2 OF 4

SHEET 3 OF 4
(Panel 1)


SHEET 3 OF 4
(Panel 2)

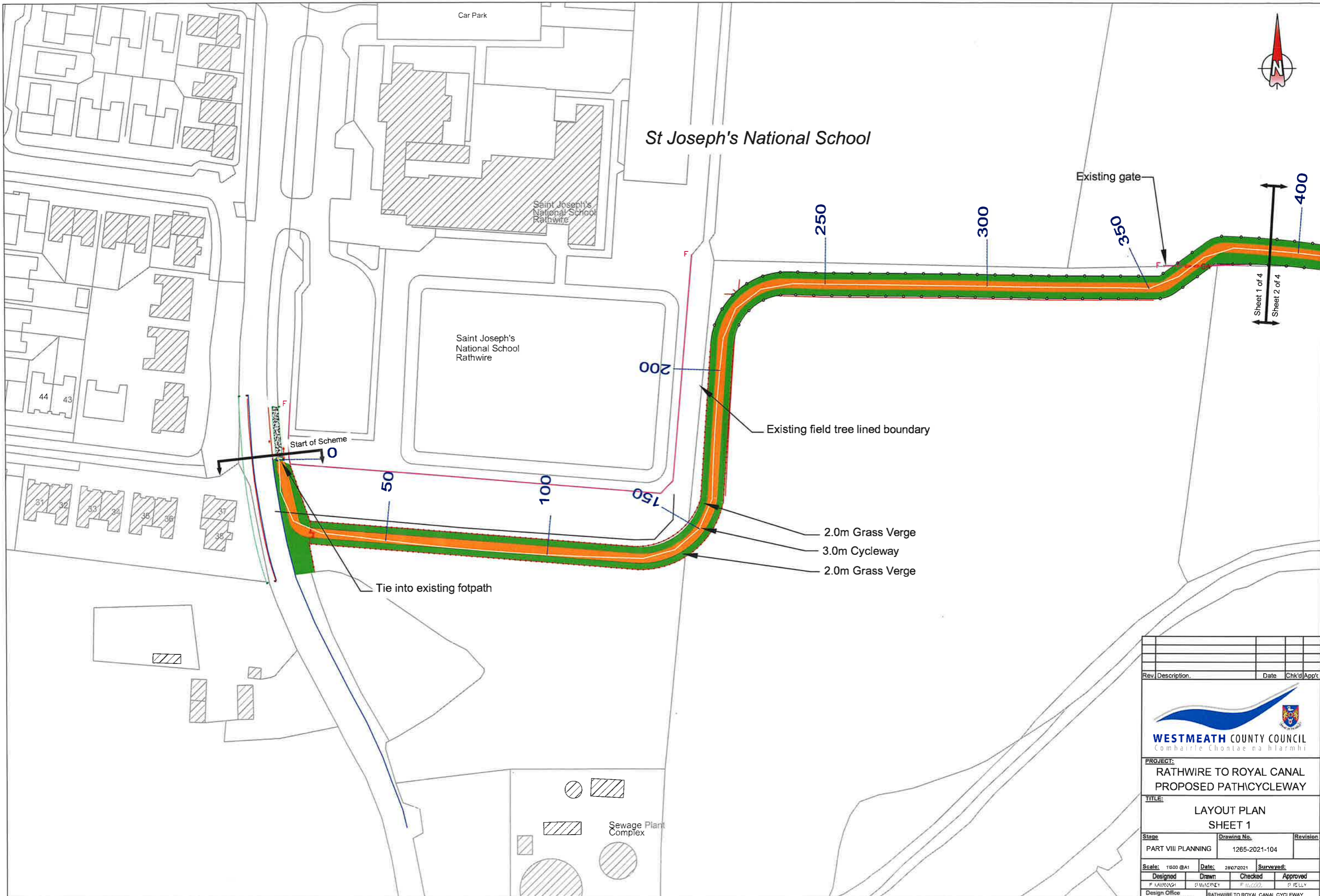
SHEET 4 OF 4
(Panel 2)

SHEET 4 OF 4
(Panel 4)

THOMASTOWN

Royal Canal

Rev	Description	Date	Chk'd	App't
 WESTMEATH COUNTY COUNCIL Comhairle Chontae na hIarmhí				
PROJECT: RATHWIRE TO ROYAL CANAL PROPOSED PATH/CYCLEWAY				
TITLE: OVERALL LAYOUT				
Stage		Drawing No.		Revision
PART VIII PLANNING		1265-2021-103		
Scale: 1:2000 @ A1		Date: 28/07/2021		Surveyed:
Designed:	Drawn:	Checked:	Approved:	
P. KAVANAGH	P. HANREAY	P. MCCOOL	P. KELLY	
Design Office Transportation Section Aras an Chontae An Muileann gCearr Phone 044 923200		RATHWIRE TO ROYAL CANAL CYCLEWAY P. HANREAY RATHWIRE TO ROYAL CANAL P. MCCOOL PART VIII PLANNING		



St Joseph's National School

Car Park

Saint Joseph's National School Rathwire

Saint Joseph's National School Rathwire

Existing gate

Sheet 1 of 4
Sheet 2 of 4


Start of Scheme

Existing field tree lined boundary

Tie into existing footpath

2.0m Grass Verge
3.0m Cycleway
2.0m Grass Verge

Rev	Description	Date	Chk'd	App'd



WESTMEATH COUNTY COUNCIL
Comhairle Chiontae na hIarmhí

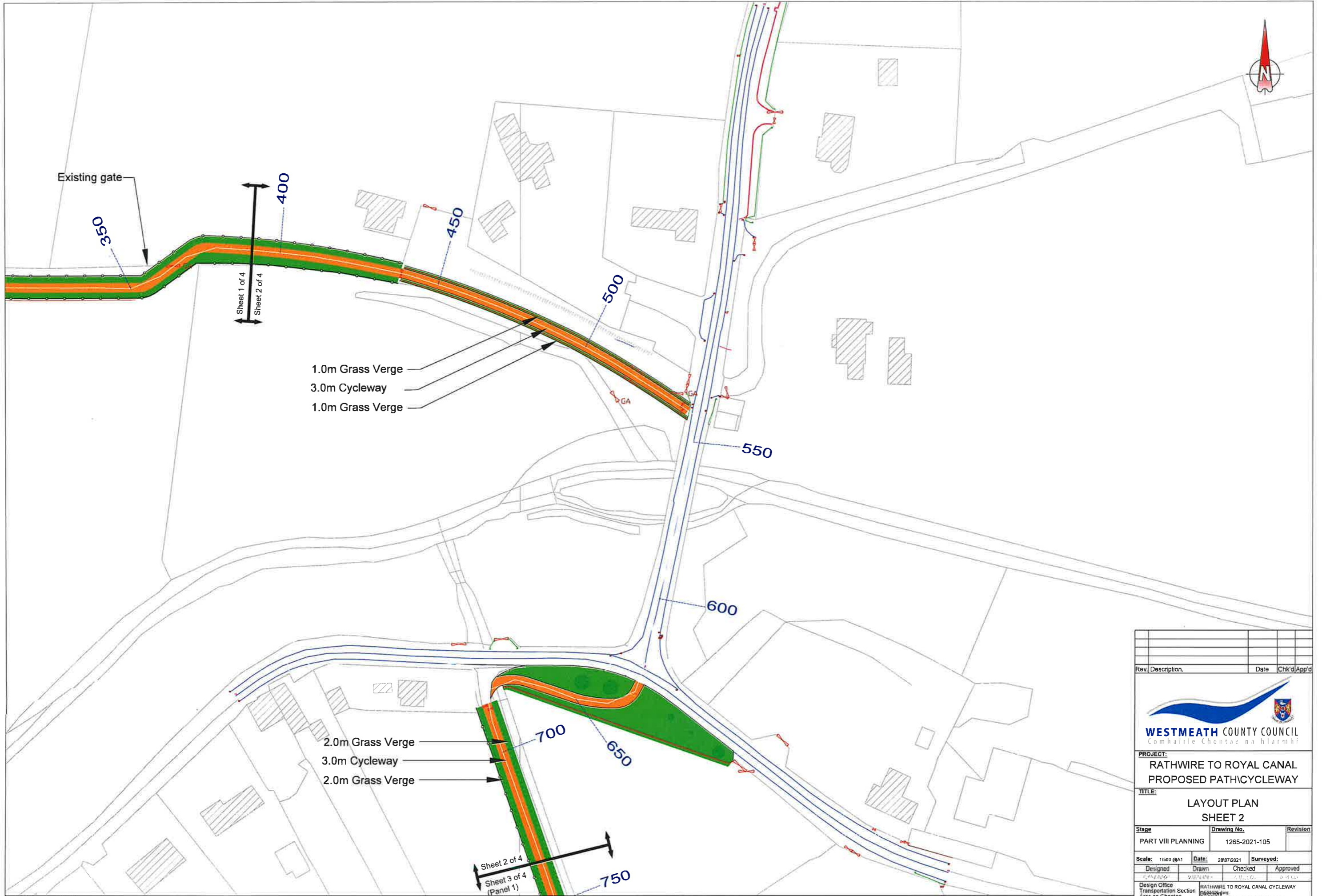
PROJECT:
RATHWIRE TO ROYAL CANAL
PROPOSED PATH/CYCLEWAY

TITLE:
LAYOUT PLAN
SHEET 1


Stage	Drawing No.	Revision
PART VIII PLANNING	1265-2021-104	

Scale: 1:500 @A1	Date: 28/07/2021	Surveyed:
Designed: P. LAVINAGH	Drawn: P. McNEELEY	Checked: P. McNEELEY
Approved:	Approved:	Approved:

Design Office Transportation Section An Múileann gCoar Phone 044 832800	RATHWIRE TO ROYAL CANAL CYCLEWAY BIR656719 RATHWIRE/RATHWIRE TO ROYAL CANAL LINK/PART VIII PLANNING
--	--



Rev.	Description	Date	Chk'd	App'd



WESTMEATH COUNTY COUNCIL
Comhairle Chontae na hIarmhí

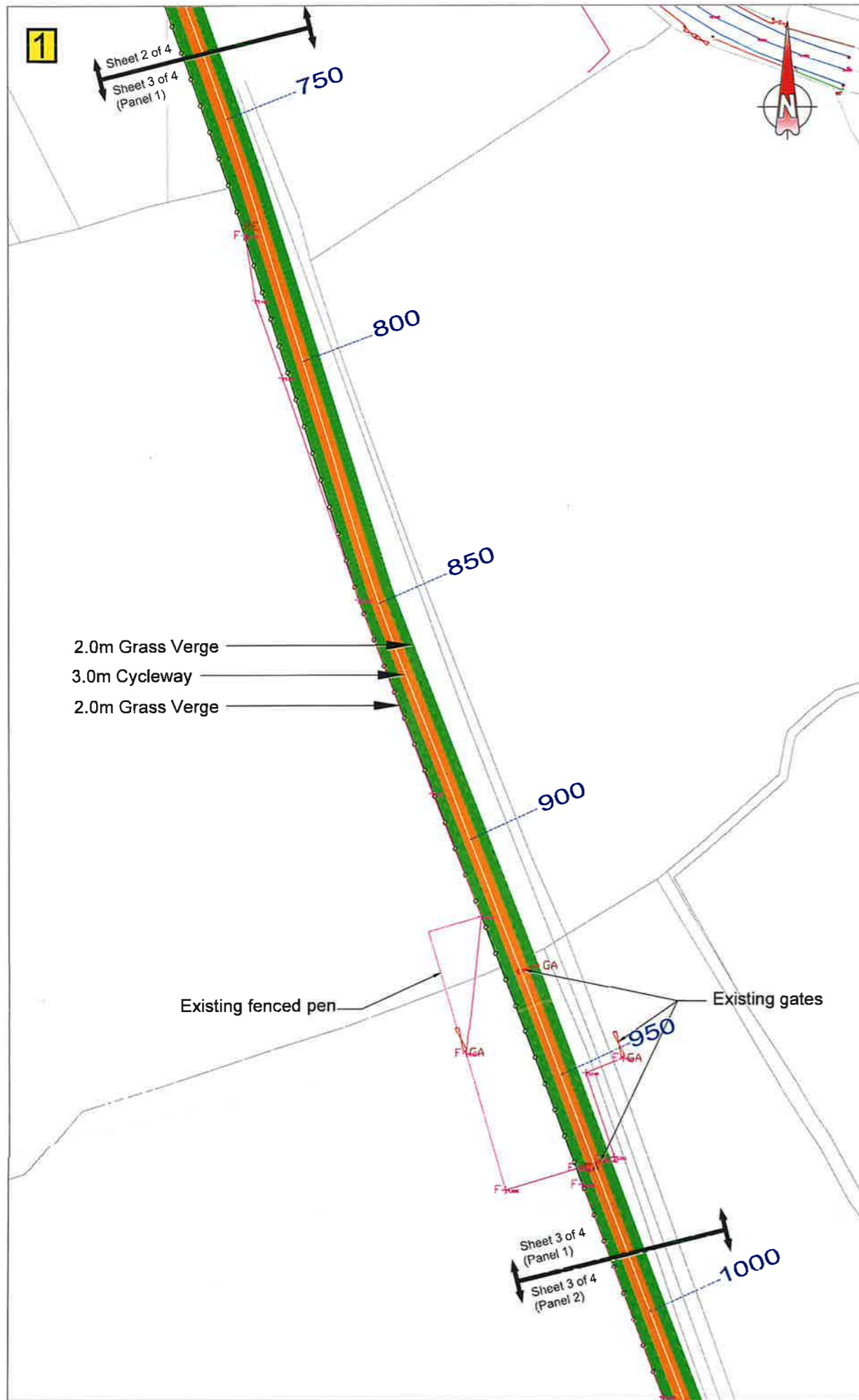
PROJECT:
RATHWIRE TO ROYAL CANAL
PROPOSED PATH/CYCLEWAY

TITLE:
LAYOUT PLAN
SHEET 2

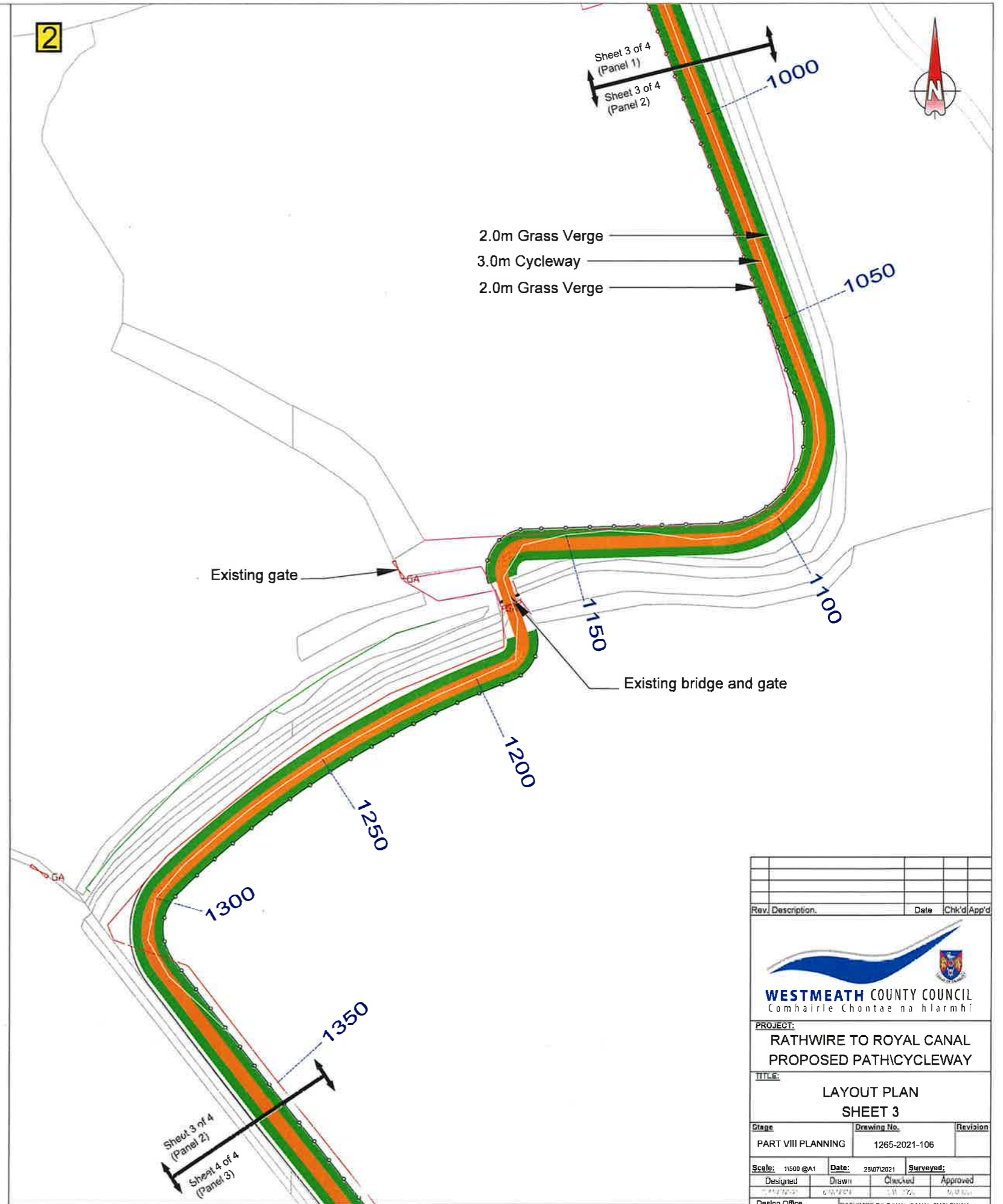
Stage	Drawing No.	Revision
PART VIII PLANNING	1265-2021-105	


Scale: 1:500 @A1	Date: 28/07/2021	Surveyed:
Designed:	Drawn:	Checked:
Approved:	Approved:	Approved:

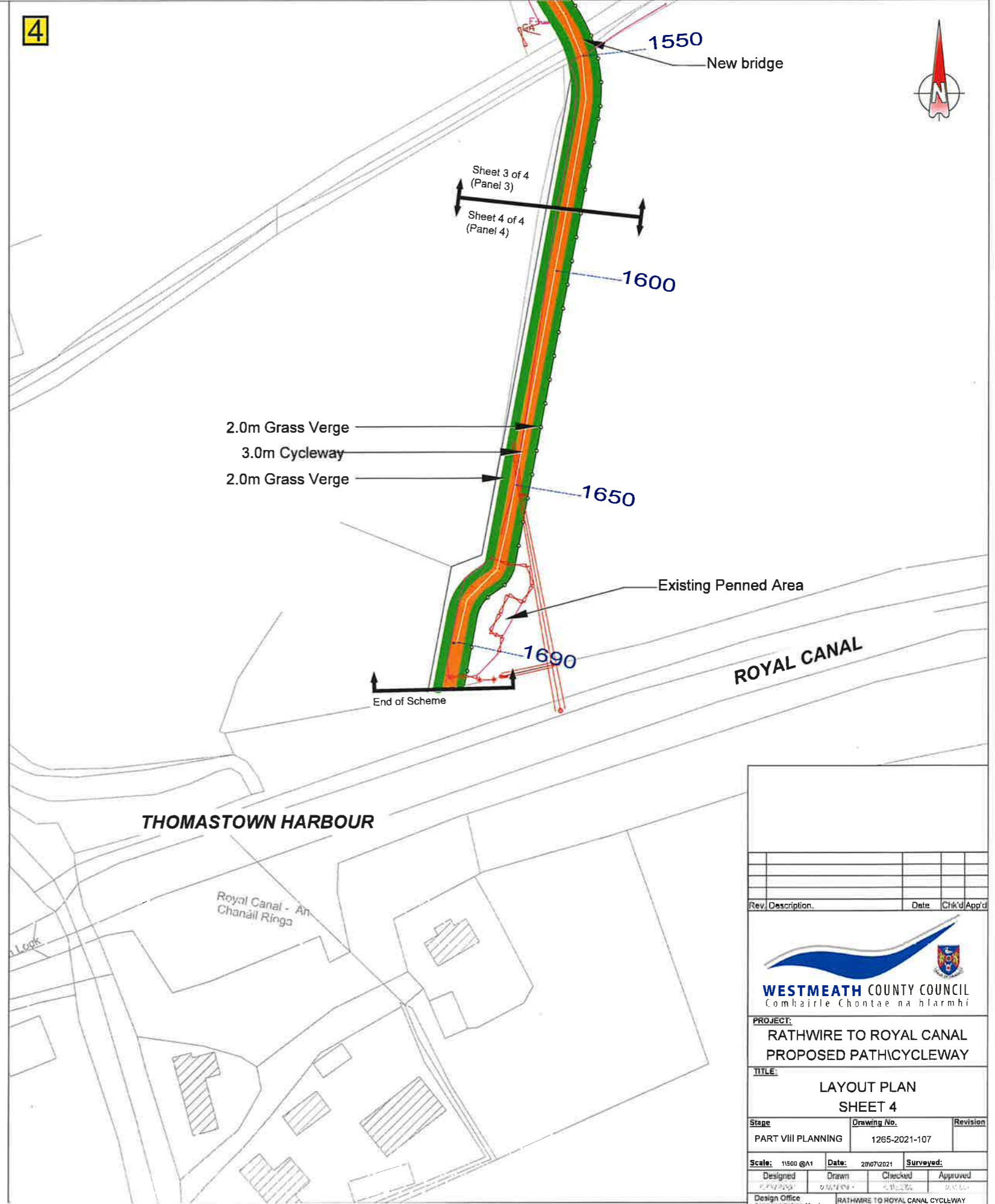
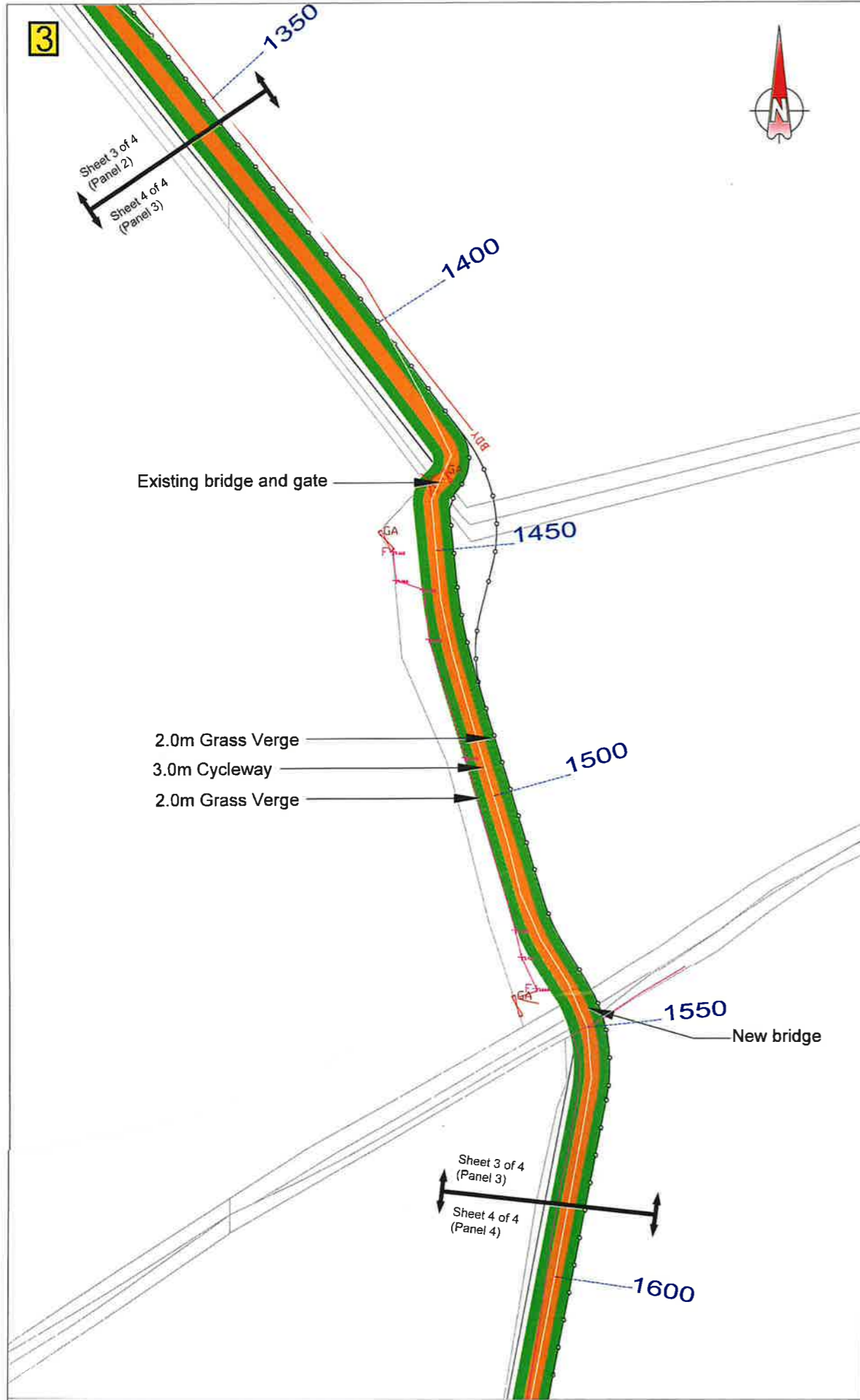
Design Office Transportation Section Aras an Chontae An Múscannóg Ceathrú Rathwire, Rathwire to Royal Canal Dublin 15	Project RATHWIRE TO ROYAL CANAL CYCLEWAY RATHWIRE TO ROYAL CANAL RATHWIRE TO ROYAL CANAL RATHWIRE TO ROYAL CANAL
---	---




Sheet 3 Scale 1:500



Rev.	Description	Date	Chk'd	App'd
 WESTMEATH COUNTY COUNCIL Comhairle Chontae na hIarmhí				
PROJECT:				
RATHWIRE TO ROYAL CANAL PROPOSED PATH/CYCLEWAY				
TITLE:				
LAYOUT PLAN SHEET 3				
Stage	Drawing No.	Revision		
PART VIII PLANNING	1265-2021-106			
Scale: 1:500 @ A1	Date: 29/07/2021	Survised:		
Designed	Drawn	Checked	Approved	
Design Office Transportation Section An Múlaínn gCearr Phone: 044 933030 Web: www.westmeath.ie	RATHWIRE TO ROYAL CANAL CYCLEWAY RATHWIRE P. VAENTY/CYCLEWAYS/WILLUCAN RATHWIRE/RATHWIRE TO ROYAL CANAL LINK/PART VIII PLANNING			

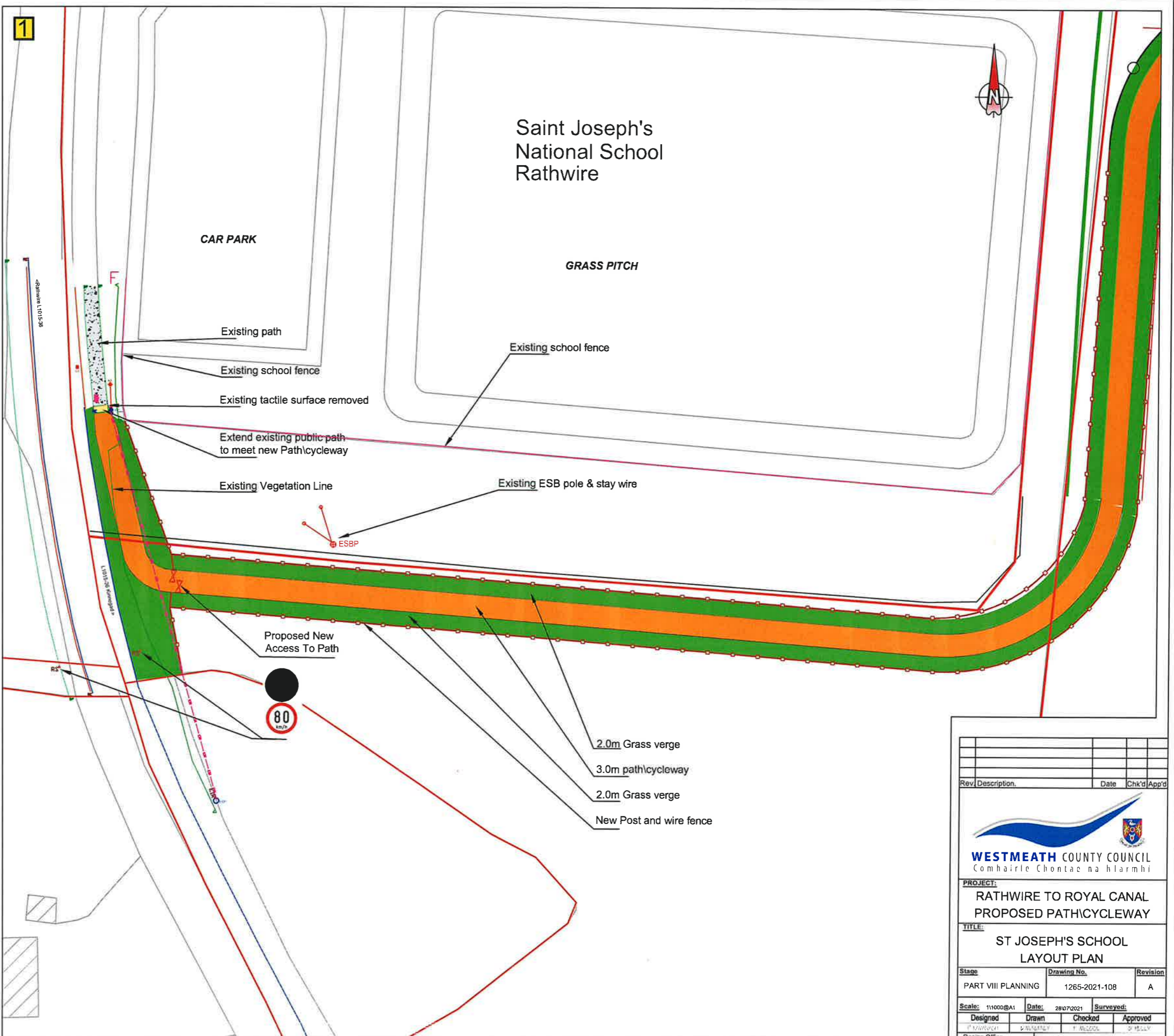


Sheet 4 Scale 1:500

Rev.	Description	Date	Chk'd	App'd
 WESTMEATH COUNTY COUNCIL Comhairle Chontae na hIarmhí				
PROJECT:				
RATHWIRE TO ROYAL CANAL PROPOSED PATH/CYCLEWAY				
TITLE:				
LAYOUT PLAN SHEET 4				
Stage	Drawing No.	Revision		
PART VIII PLANNING	1265-2021-107			
Scale: 1:500 @A1	Date: 29/07/2021	Surveyed:		
Designed	Drawn	Checked	Approved	
Design Office: Transportation Section Anas an Chontae An Múseann gCearr		RATHWIRE TO ROYAL CANAL CYCLEWAY PÁIRT VIII PLANNING RATHWIRE TO ROYAL CANAL PÁIRT VIII PLANNING		




Location Map Not to Scale



Panel 1 Scale 1:500

Rev	Description	Date	Chk'd	App'd


WESTMEATH COUNTY COUNCIL
 Comhairle Chontae na hIarmhí

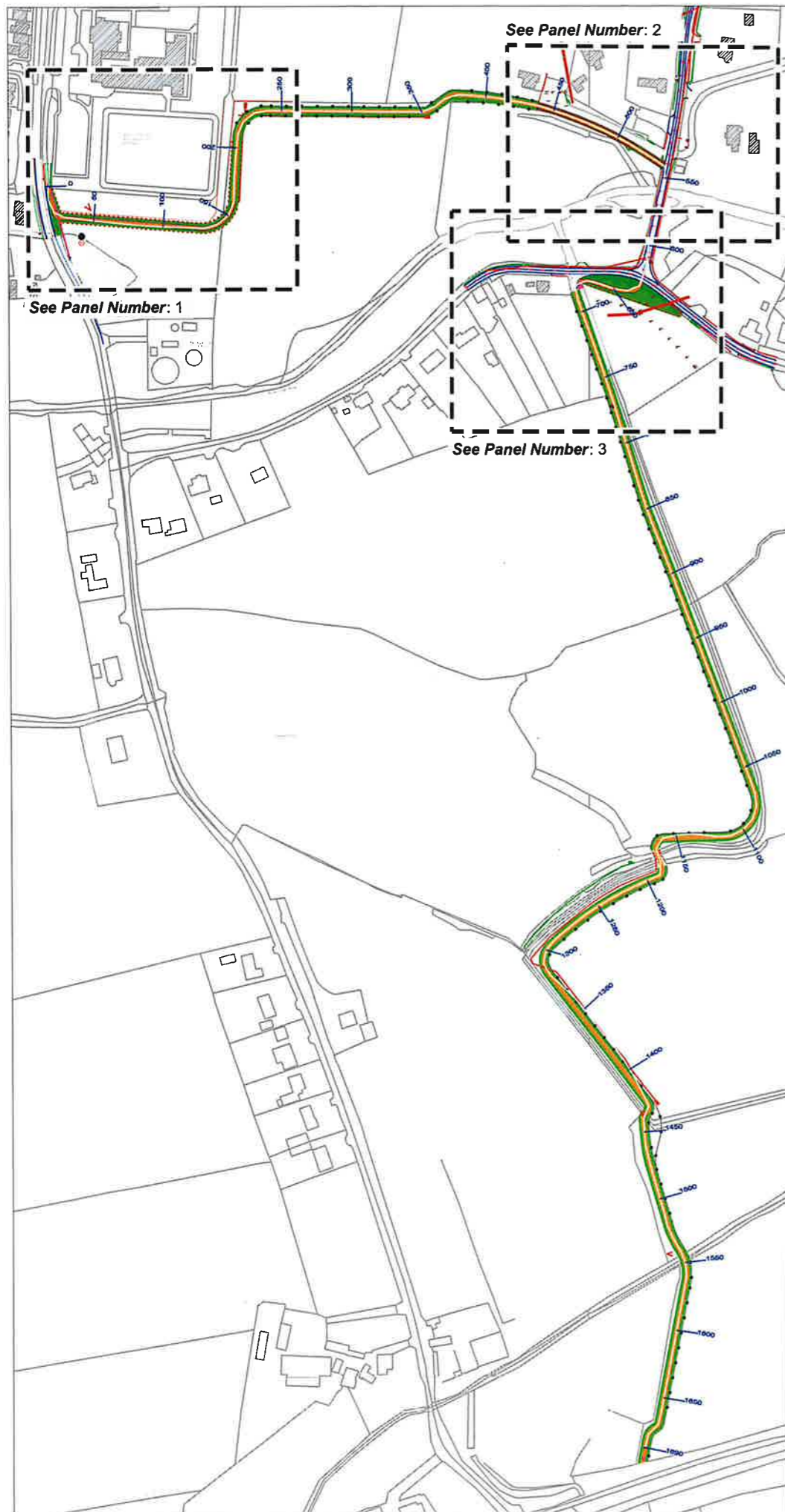
PROJECT:
 RATHWIRE TO ROYAL CANAL
 PROPOSED PATH/CYCLEWAY

TITLE:
 ST JOSEPH'S SCHOOL
 LAYOUT PLAN

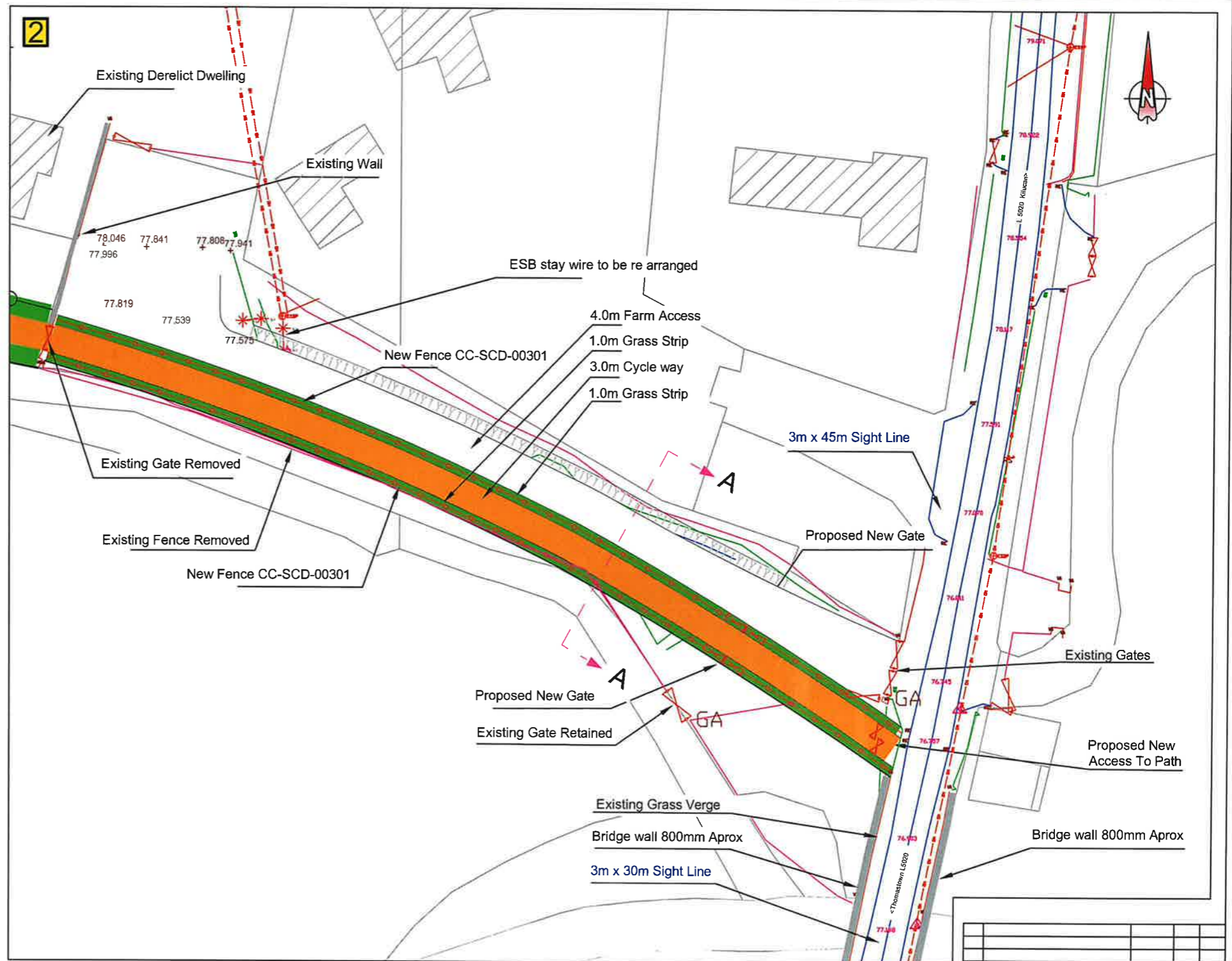
Stage	Drawing No.	Revision
PART VIII PLANNING	1265-2021-108	A

Scale: 1:11000@A1	Date: 28/07/2021	Surveyed:	
Designed	Drawn	Checked	Approved
F. McGRATH	P. McGRATH	F. McGRATH	S. KELLY

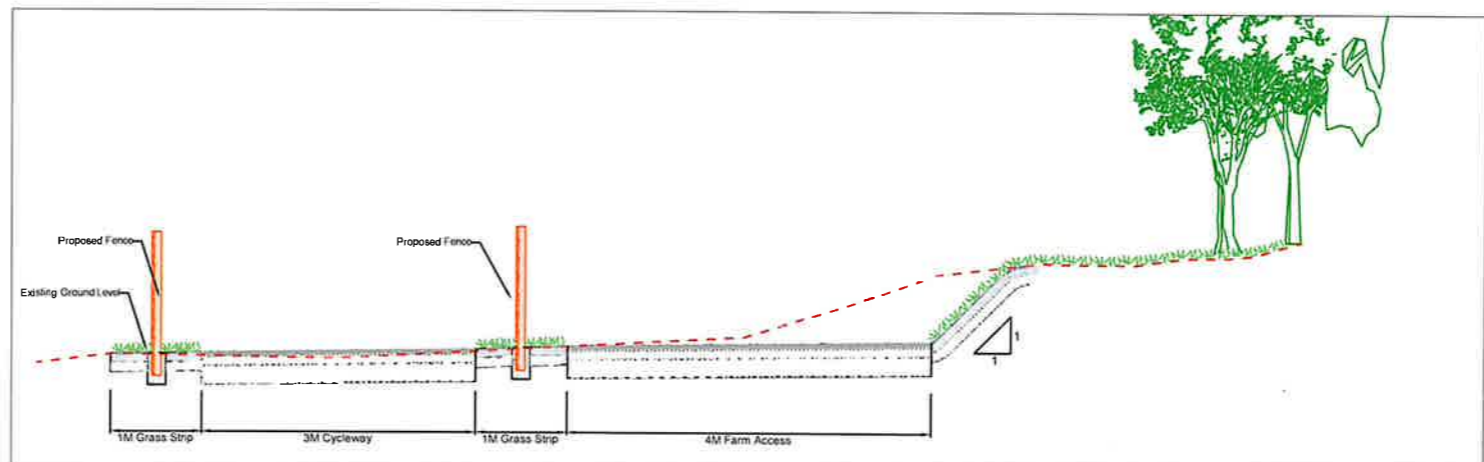
Design Office: **TRANSPLANETION SOLUTIONS**
 An tSeirbhís Leasúcháin agus
 An tAidmearúcháin
 RATHWIRE TO ROYAL CANAL CYCLEWAY
 RATHWIRE TO ROYAL CANAL
 RATHWIRE TO ROYAL CANAL
 PART VIII PLANNING



Location Map Not to Scale



Panel 2 Scale 1:500



Section A-A Not to Scale

Rev	Description	Date	Chk'd	App'd


WESTMEATH COUNTY COUNCIL
 Comhairle Chontae na hIarmhí

PROJECT:
 RATHWIRE TO ROYAL CANAL
 PROPOSED PATH/CYCLEWAY

TITLE:
 JUNCTION (FARM ENTRANCE)
 LAYOUT PLAN

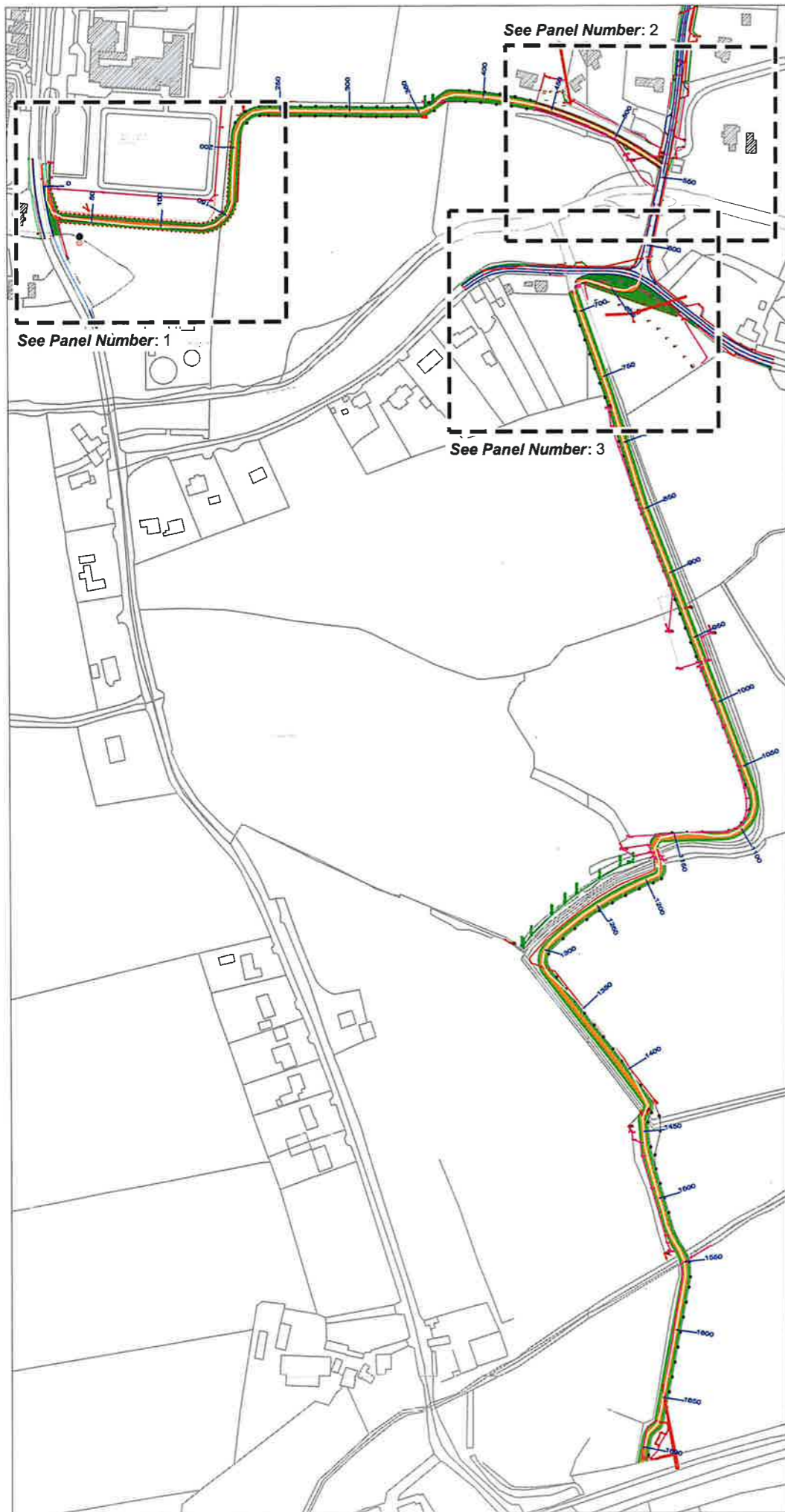
Stage	Drawing No.	Revision
PART VIII PLANNING	1265-2021-109	

Scale: 1:11000@A1	Date: 19/04/2021	Surveyed:
Designed	Drawn	Checked
P. KAVANAGH	D. MCCOY	P. MCCOY
Approved		

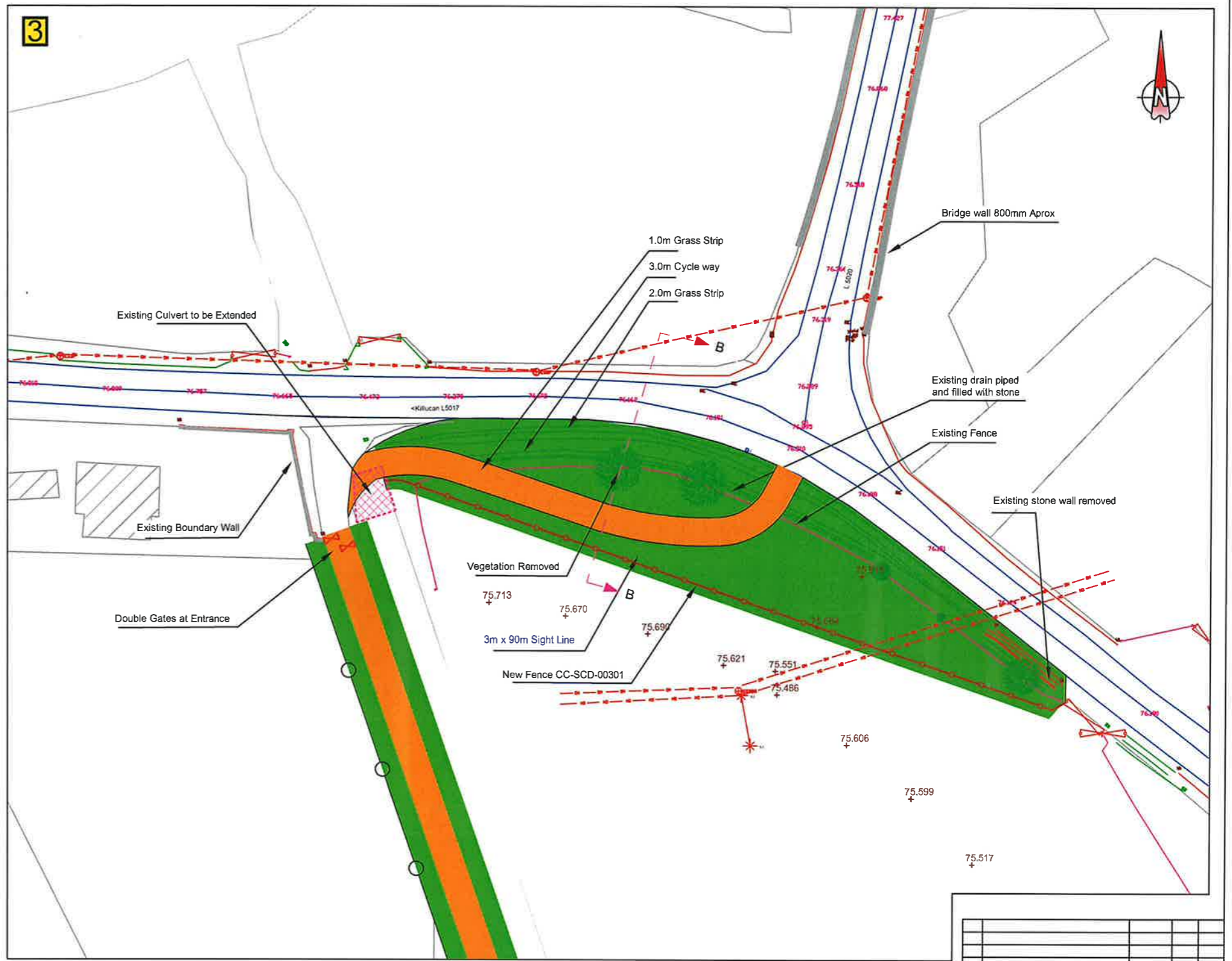
Design Office: Transportation Section
 An Múlaonn gCearr
 Phone: 044 822550
 Web: www.westmeath.ie

RATHWIRE TO ROYAL CANAL CYCLEWAY
 PAVEMENT/CYCLEWAYS/KILLUCAN
 RATHWIRE/RATHWIRE TO ROYAL CANAL
 LINKS PART VIII PLANNING

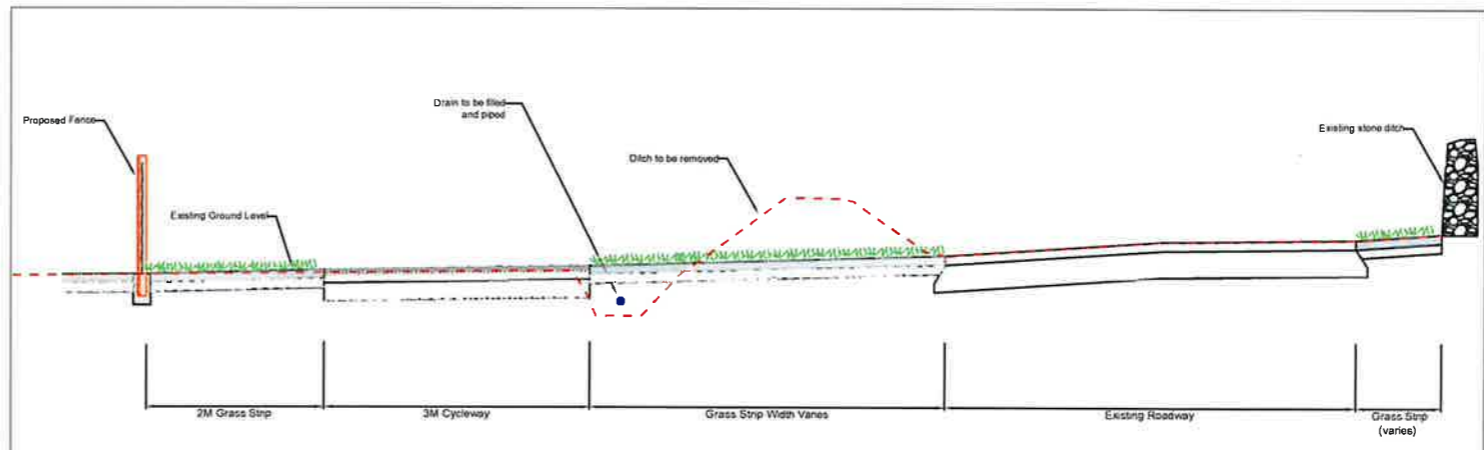
© Ordnance Survey Ireland/Government of Ireland 2021/OSI_NMA_287
 Westmeath O.S. Map No: 2842_C, 2842_D, 2910



Location Map Not to Scale



Panel 3 Scale 1:500



Section B-B Not to Scale

© Ordnance Survey Ireland/Government of Ireland 2021/OSI_NMA_287
 Westmeath O.S Map No: 2842_C, 2842_D, 2910

Rev	Description	Date	Chk'd	App'd

WESTMEATH COUNTY COUNCIL
 Comhairle Chontae na hIarmhí

PROJECT:
 RATHWIRE TO ROYAL CANAL
 PROPOSED PATH/CYCLEWAY

TITLE:
 JUNCTION TIE IN
 LAYOUT PLAN

State	Drawing No.	Revision
PRT VIII PLANNING	1265-2021-110	A

Scale:	1:1000@A1	Date:	22/06/2021	Surveyed:
Designed	Drawn	Checked	Approved	
P. KAVANAGH	P. MURPHY	P. MCCOOL	P. KELLY	

Design Office:
 Transportation Section
 Aras an Chontae
 An Múileann gCeerr
 P.O. Box 120200

RATHWIRE TO ROYAL CANAL CYCLEWAY
 P. JAMES/CYCLEWAYS/KILLUCAN
 RATHWIRE/RATHWIRE TO ROYAL CANAL
 P. INCUBART VILAS/ANNING