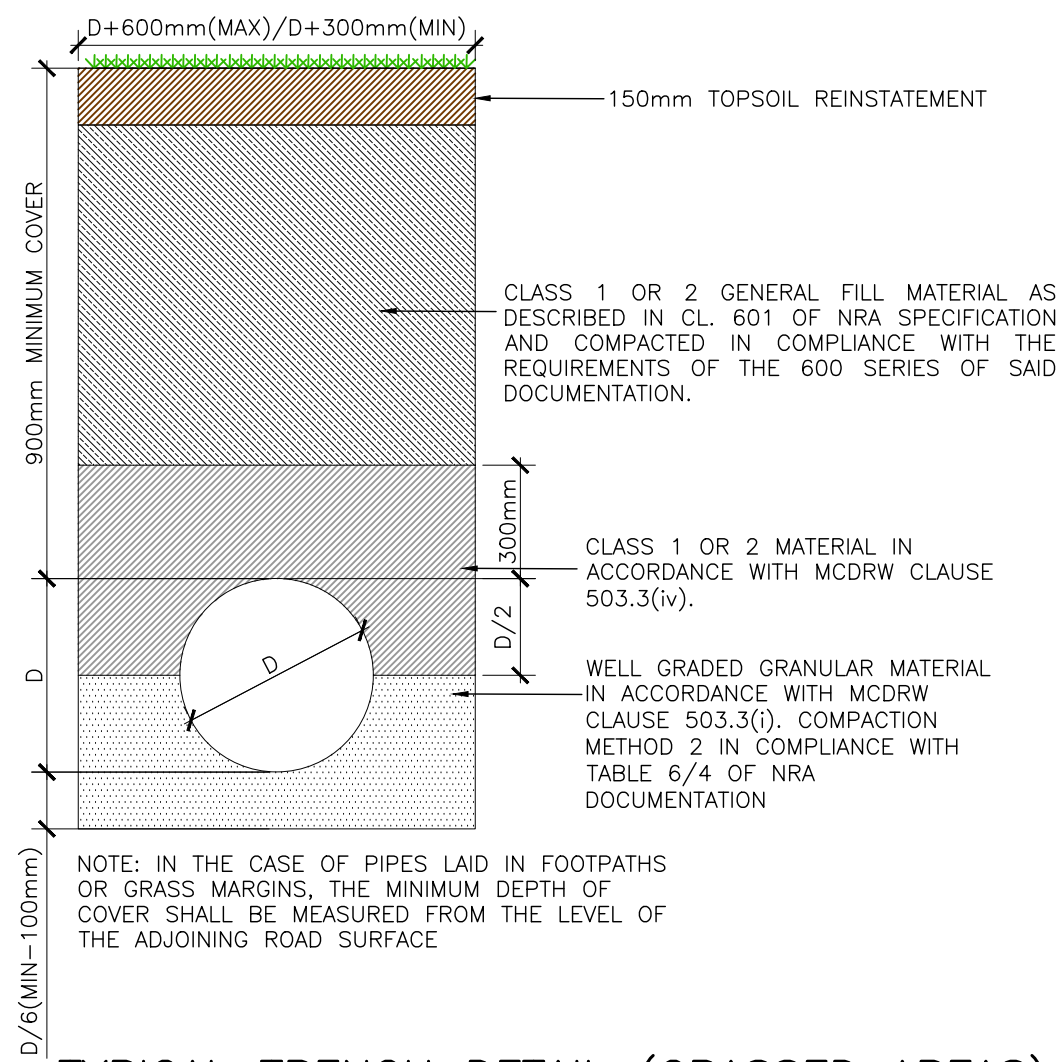
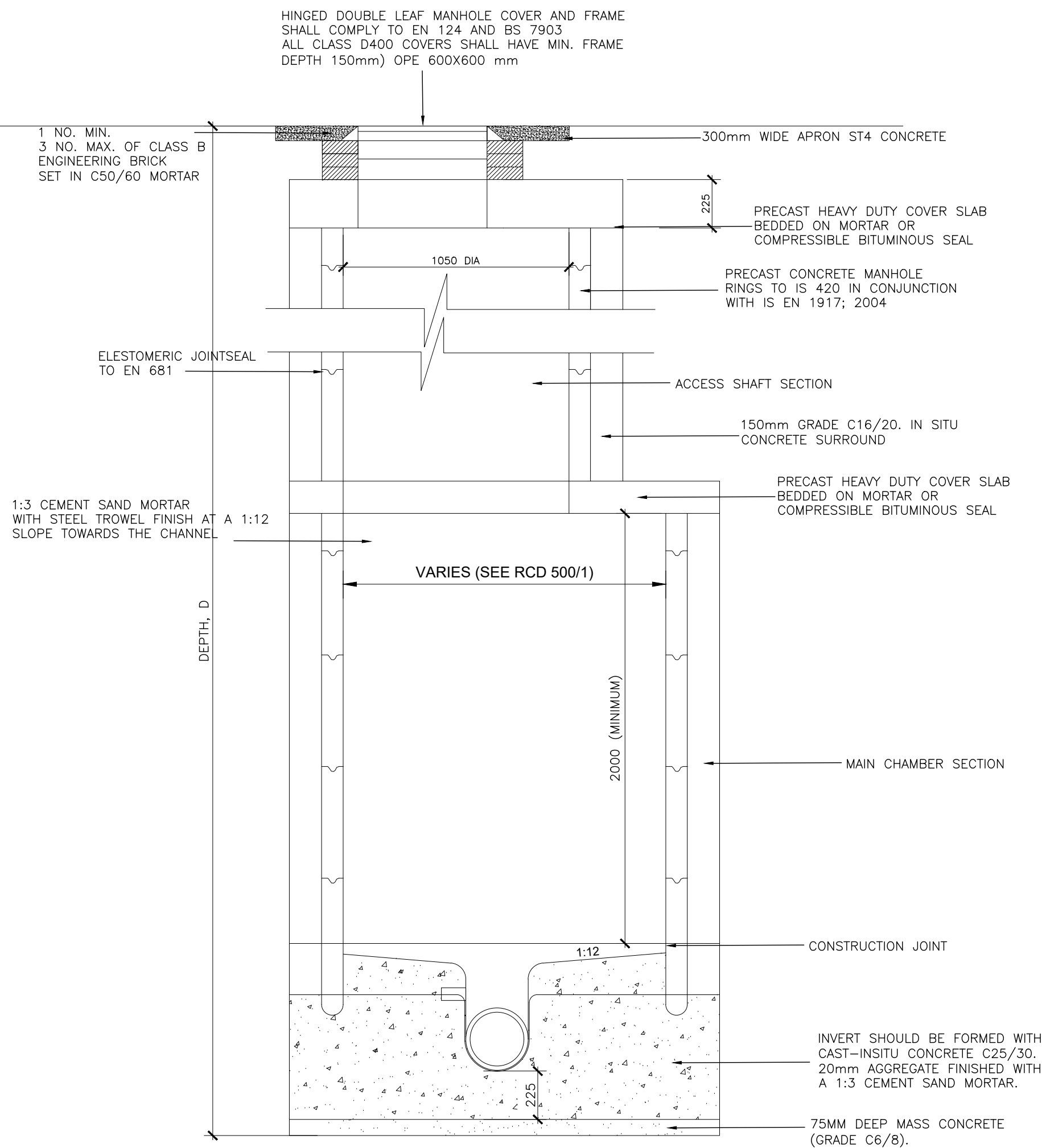
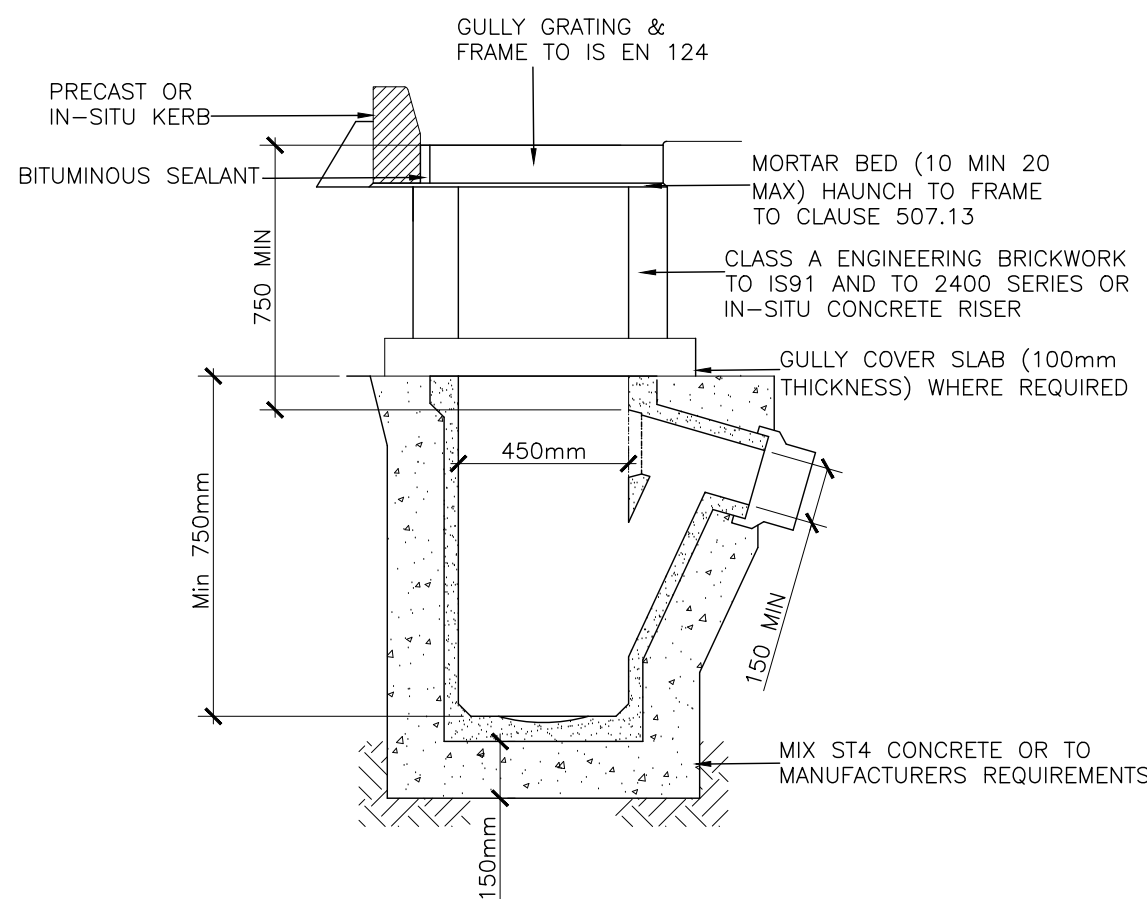
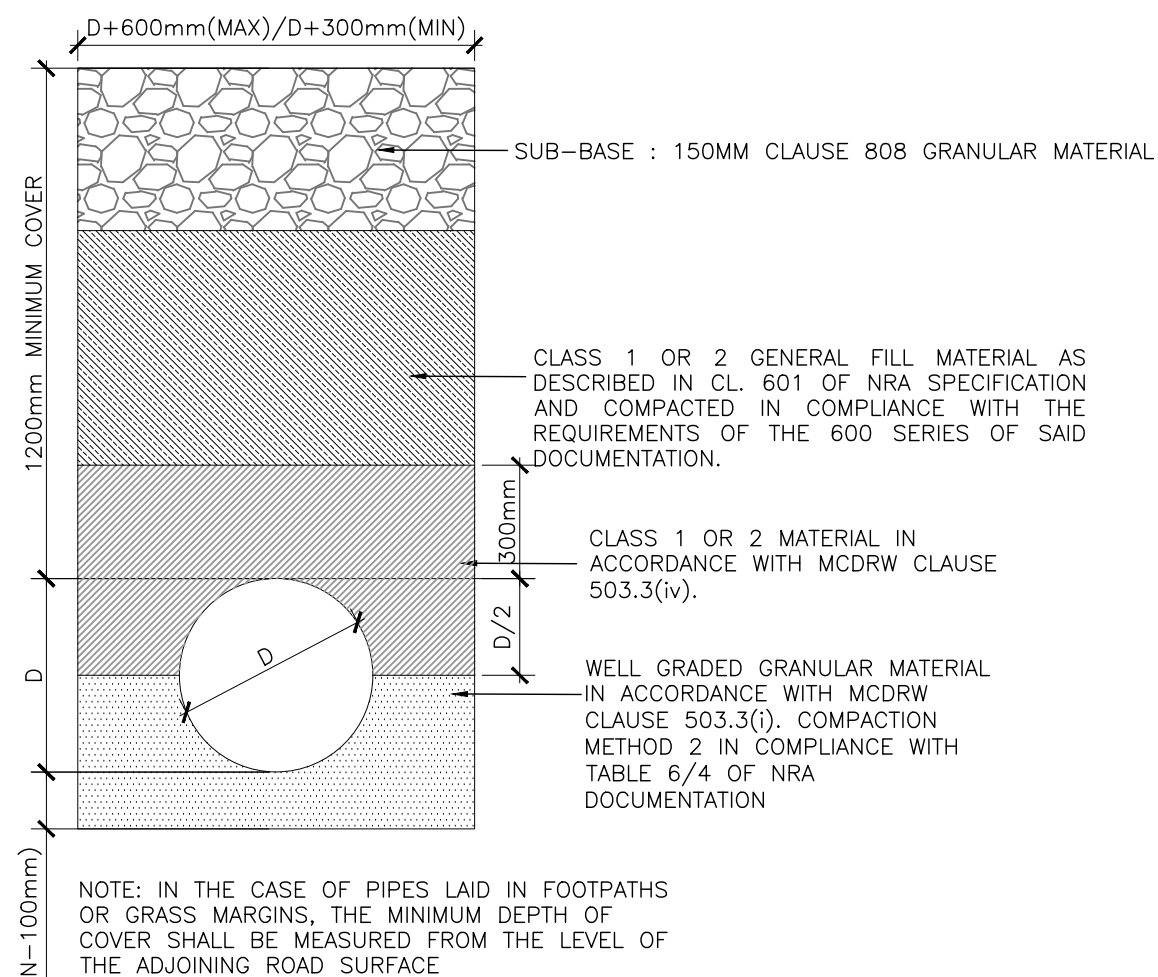


TYPICAL MANHOLE DETAIL (TYPE ??)

SCALE 1:20

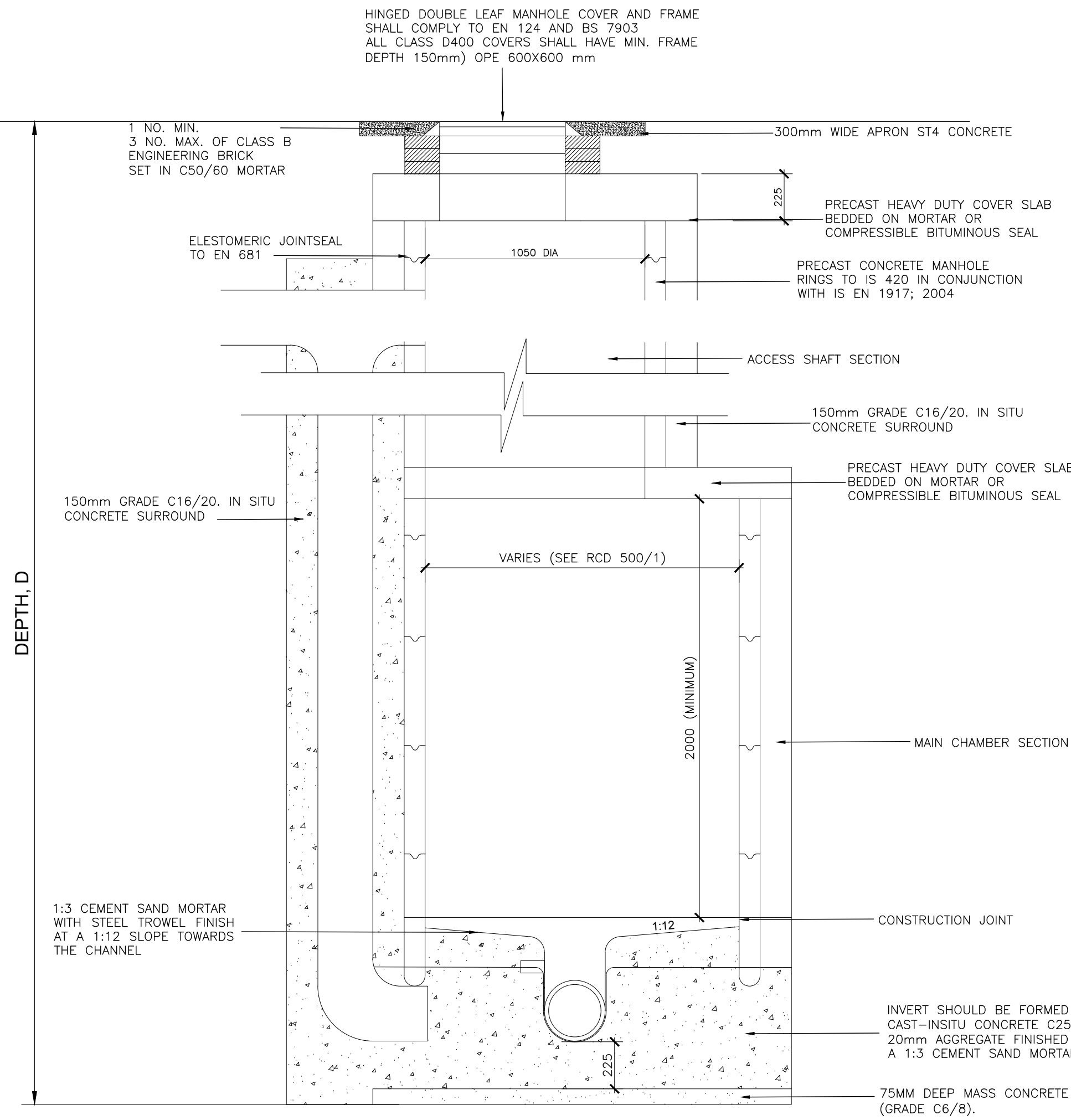


DEPTH (m)	CHAMBER TYPES								
	PIPE DIAMETER								
	225mm	300mm	375mm	450mm	525mm	600mm	675mm	750mm	900mm
0-1m	A 975x1350	A 975x1350	A 975x1350	A 975x1350	B11350x1690	B11350x1690	B11350x1690	B11350x1690	B11350x1690
1-3m	C 1050	C 1050	C 1050	C 1050	C 1200	C 1200	C 1350	C 1350	C 1500
3-6m		D 1050	D 1050	D 1050	D 1200	D 1200	D 1350	D 1500	D 1500
6-12m		E 1500	E 1500	E 1500	E 1500	E 1500	E 1500	E 1500	E 1500



TYPICAL MANHOLE DETAIL (TYPE ??)

SCALE 1:20



TYPICAL BACKDROP MANHOLE DETAIL

SCALE 1:20

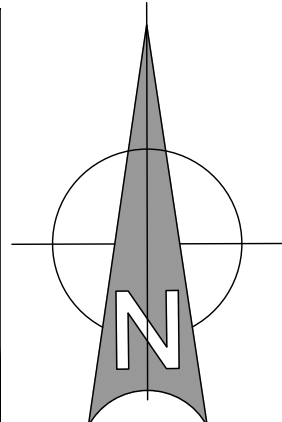
- NOTES :-
1. THIS DRAWING SHOULD BE READ IN CONJUNCTION WITH ALL RELEVANT ENGINEER'S AND ARCHITECT'S DRAWINGS AND SPECIFICATIONS.
  2. ALL LEVELS ARE IN METRES TO ORDNANCE DATUM, MALIN HEAD UNLESS NOTED OTHERWISE.
  3. THE POSITION OF EXISTING SERVICES AS SHOWN ON THE DRAWING MAY NOT BE ACCURATE. THE CONTRACTOR SHALL BE FULLY RESPONSIBLE FOR LOCATING ALL EXISTING SERVICES ON THE SITE AND SHOULD CONTACT THE RESPECTIVE UTILITY PROVIDERS AND AUTHORITIES FOR THE MOST UP-TO-DATE INFORMATION BEFORE COMMENCING THE WORKS.
  4. EXISTING LEVELS ARE INDICATIVE ONLY AND MUST BE CHECKED AND VERIFIED ON SITE PRIOR TO COMMENCEMENT.
  5. PROPOSED MANHOLE COVER LEVELS ARE APPROXIMATE AND SHOULD BE ADJUSTED TO SUIT LOCAL FINISHES.
  6. ALL SURFACE WATER DRAINAGE INFRASTRUCTURE SHALL BE CONSTRUCTED IN ACCORDANCE WITH LOCAL AUTHORITY REQUIREMENTS.
  7. LOCKABLE TYPE GULLY TRAPS TO BE USED ON ALL SURFACE WATER DRAINS.
  8. GULLY POSITIONS ARE APPROXIMATE ONLY AND SHOULD BE LOCATED AT LOW POINTS.
  9. REFER TO ARCHITECTS' DRAWINGS FOR ALL ROOF DRAINAGE, STRIP DRAINS AND GULLY TRAPS BENEATH DOWNPIPES.
  10. WHERE IT IS NOT POSSIBLE TO ACHIEVE MINIMUM COVER, PIPES SHOULD BE BEDDED AND SURROUNDED IN CONCRETE 150MM THICK, CLASS E IN ACCORDANCE WITH TII STANDARD CONSTRUCTION DETAIL CC-SCD-00521.
  11. ALL WASTEWATER DRAINAGE INFRASTRUCTURE SHALL BE CONSTRUCTED IN ACCORDANCE WITH IRISH WATER STANDARDS. REFER TO IRISH WATER PUBLICATIONS "WASTEWATER INFRASTRUCTURE STANDARD DETAILS - IW-CDS-5030-01" AND "CODE OF PRACTICE FOR WASTEWATER INFRASTRUCTURE - IW-CDS-5030-03".
  12. HYDRANTS TO BE ACCORDANCE WITH IRISH WATER STANDARD DETAILS STD-W-16 TO STD-W-19.
  13. THRUST BLOCK ARRANGEMENTS SHALL COMPLY WITH IRISH WATER STANDARD DETAILS STD-W-28
  14. REFER TO MECHANICAL AND ELECTRICAL ENGINEER'S DRAWINGS FOR INTERNAL DRAINAGE AND DETAILS OF SOIL AND VENT PIPES LEADING TO WASTEWATER DRAINAGE AJS.
  15. ALL WATER INFRASTRUCTURE SHALL BE CONSTRUCTED IN ACCORDANCE WITH IRISH WATER STANDARDS. REFER TO IRISH WATER PUBLICATIONS "WATER INFRASTRUCTURE STANDARD DETAILS - IW-CDS-5020-01" AND "CODE OF PRACTICE FOR WATER INFRASTRUCTURE - IW-CDS-5020-03".
  16. ALL PLANTING & TREES TO COMPLY WITH SEPERATION DISTANCES AS PER IRISH WATER STANDARD DETAILS FOR WASTEWATER, STD-WW-06 AND STD-WW-06A AND FOR WATER, STD-W-12 AND STD-W-12A

## INFORMATION

© ORS  
This drawing and any design hereon is the copyright of the Consultants and must not be reproduced without their written consent. All drawings remain the property of the Consultants.

Figured dimension only to be taken from this drawing.  
All dimensions to be checked on site.  
Consultants to be informed immediately of any discrepancies before work proceeds.

REV NO:	DATE:	REVISION NOTE:	DWN BY:	CKD BY:
P01	12/02/2021	ISSUED FOR INFORMATION	ED	AK



CLIENT:	WESTMEATH COUNTY COUNCIL			
PROJECT:	33No. HOUSING UNITS AND ANCILLARY WORKS AT CANAL AVENUE, MULLINGAR, Co. WESTMEATH			
TITLE:	TYPICAL SURFACE WATER MANHOLE DETAILS			
DRAWN: ED	CHECKED: AK	APPROVED: MH	JOB NO: 211_028	REV: P01
DATE: 28/01/2021	SCALE: 1:20	DRAWING NO: 211_028-ORS-Z0-00-DR-C-403		

ORS

Dublin | London | Mullingar  
T: +353 1 5242060 | W: www.ors.ie | E: info@ors.ie  
ISO 9001:2008 QUALITY ASSURED COMPANY