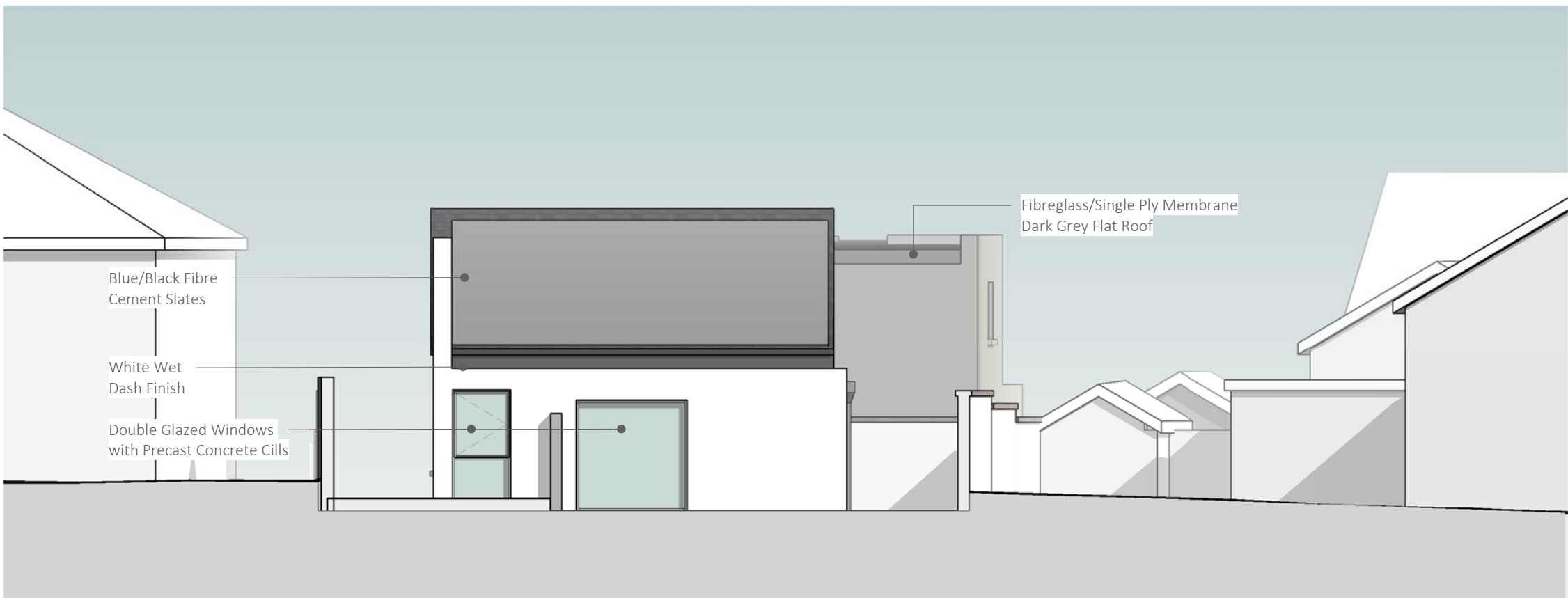




1 South-West Facing Elevation  
1 : 100



4 North-West Facing Elevation  
1 : 100



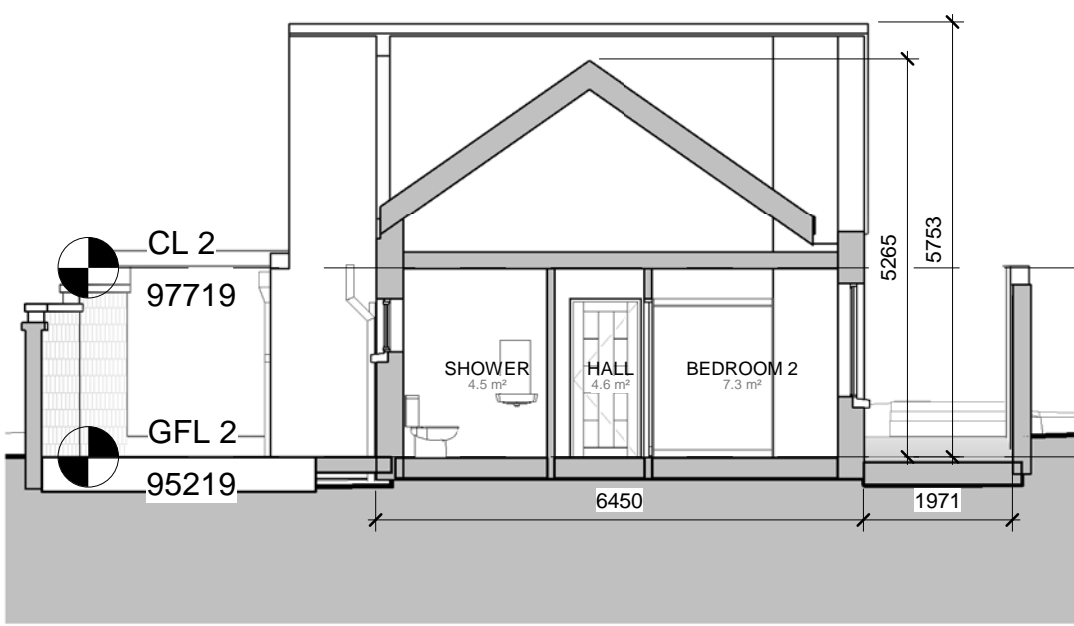
3 South-East Facing Elevation  
1 : 100



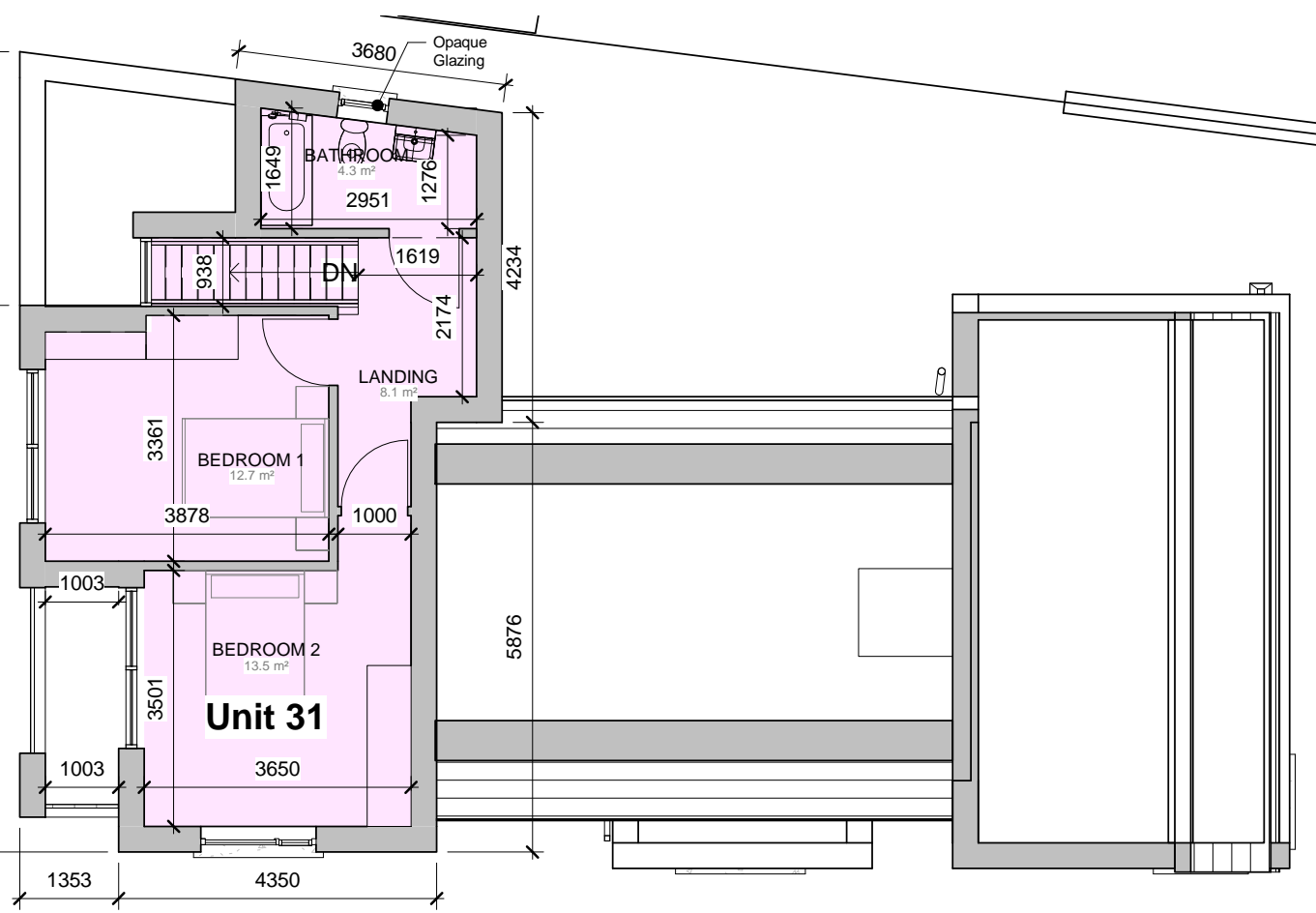
2 North-East Facing Elevation  
1 : 100



7 Section 1  
1 : 100



9 Section 2  
1 : 100



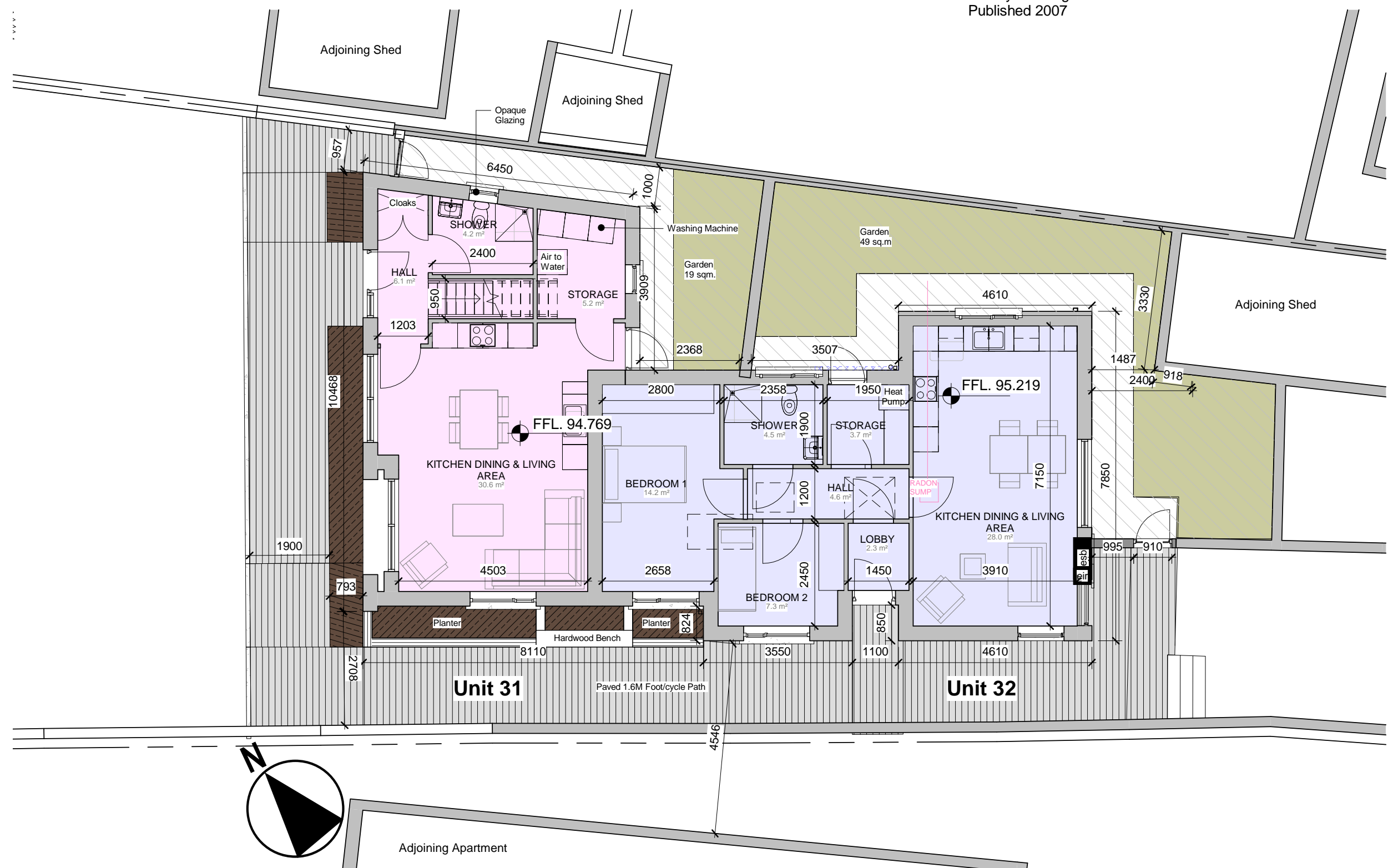
6 First Floor Level  
1 : 100



8 Section 3  
1 : 100

ACCOMMODATION UNITS AREA SCHEDULE - Units 31 & 32									
UNIT NUMBERS	TYPE	DESCRIPTION	FLOOR LEVEL	AREA (m²)	KITCHEN/ DINING/ LIVING AREA (m²)	BEDROOM 1 AREA (m²)	BEDROOM 2 AREA (m²)	BEDROOM AGG. (m²)	STORAGE (m²)
31	OPD	2 Bed, 4 Person	2 Storey	88.0m²	30.6m²	12.7m²	13.5m²	26.2m²	5.2m²
32	OPD	2 Bed, 3 Person	Single Storey	66.7m²	28.0m²	14.2m²	7.3m²	20.1m²	3.7m²

House designed in accordance with  
Quality Housing for Sustainable Communities  
Published 2007



5 Ground Floor Plan  
1 : 100

## PART 8 - PLANNING NOT FOR CONSTRUCTION

Revision Schedule				
Rev No.	Rev Description	Rev Date	Issued by	Issued to



Funded by the Irish  
Government under  
Rebuilding Ireland, Action  
Plan for Housing and  
Homelessness.



**WESTMEATH HOUSING  
DESIGN TEAM**  
WESTMEATH COUNTY COUNCIL,  
CIVIC CENTRE, CHURCH ST.,  
ATHLONE, N37 P6T5  
Phone: 05664 42100  
Web: www.westmeathcoco.ie

**PROJECT:**  
CONSTRUCTION OF 32 APARTMENTS  
AT CORN MILL, FRIARS MILL ROAD,  
MULLINGAR, CO. WESTMEATH

**TITLE:**  
UNIT 31 & 32\_PLANS, ELEVATIONS &  
SECTIONS

<b>Scale:</b> As indicated @ A1	<b>Datum:</b> MALIN	<b>Date:</b> 15/06/21
<b>Drawing No:</b> 112_03_012	<b>Stage:</b> PLANNING	<b>Revision</b>
<b>Surveyed</b> LN	<b>Drawn</b> MK	<b>Checked</b> AF
		<b>Approved</b> PH

**File Name and Directory:**  
H:\CAPITAL HOUSING DESIGN TEAM\1-Capital Schemes\112-Canal Ave\Drawings\Part 8\Blocks\Units 31 & 32\_Two Bed OPD\_PART 8\_REV A.dwg