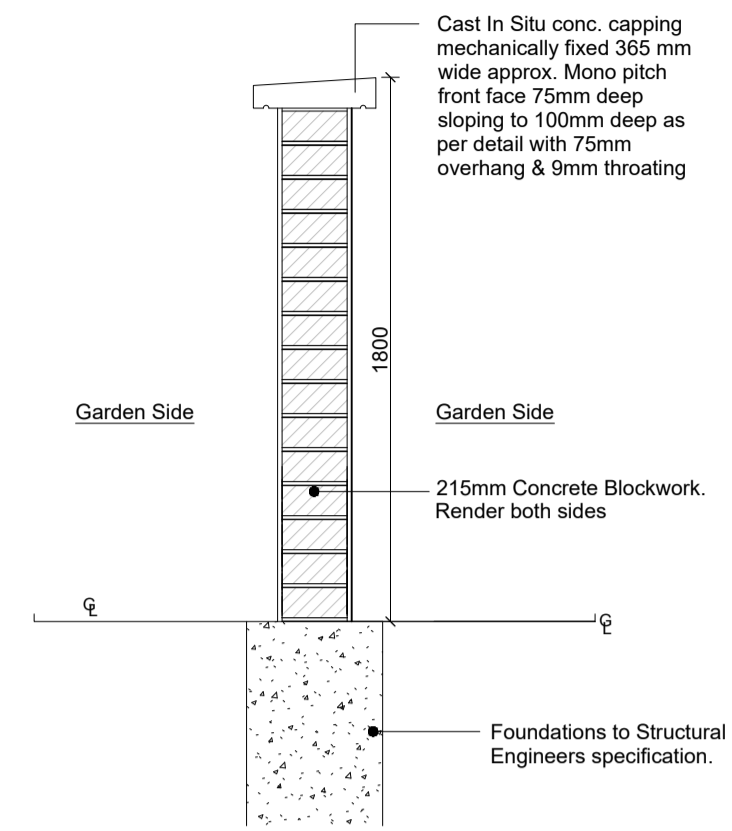
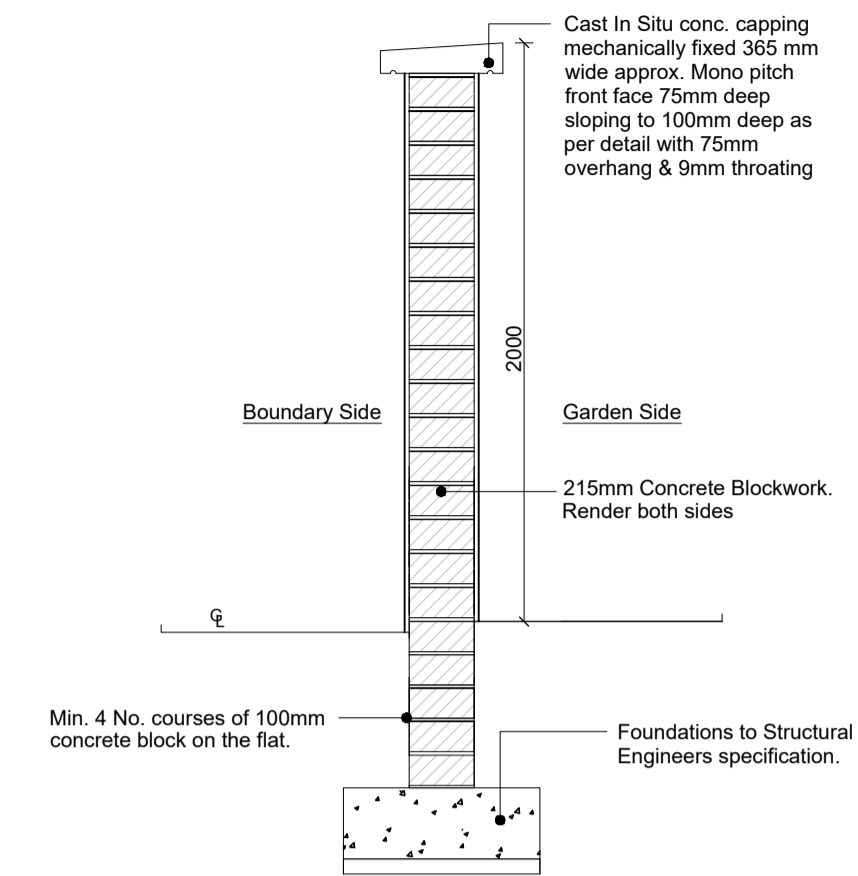


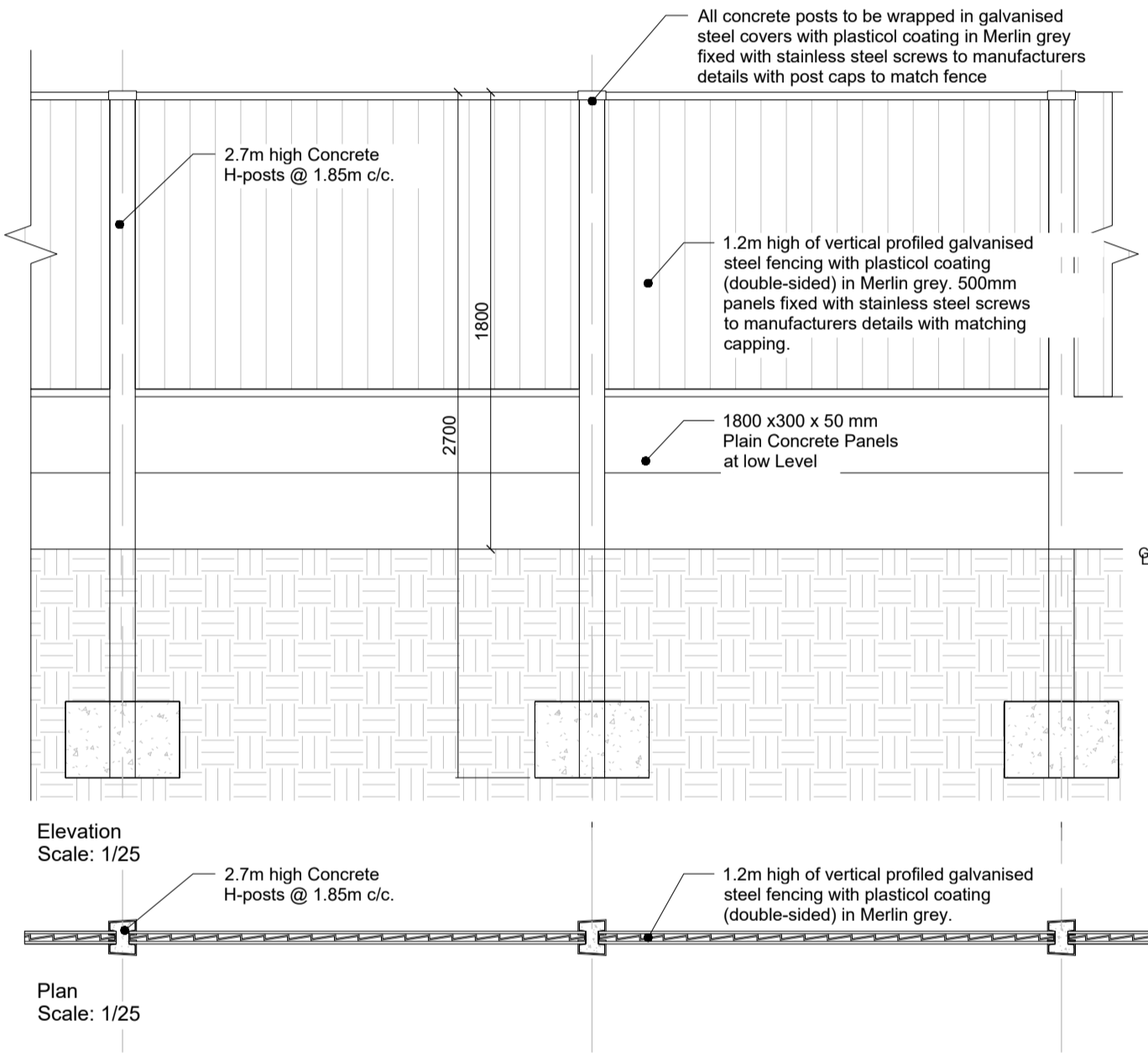
Stile Detail 1 NO
See Layout Plan for location sw corner



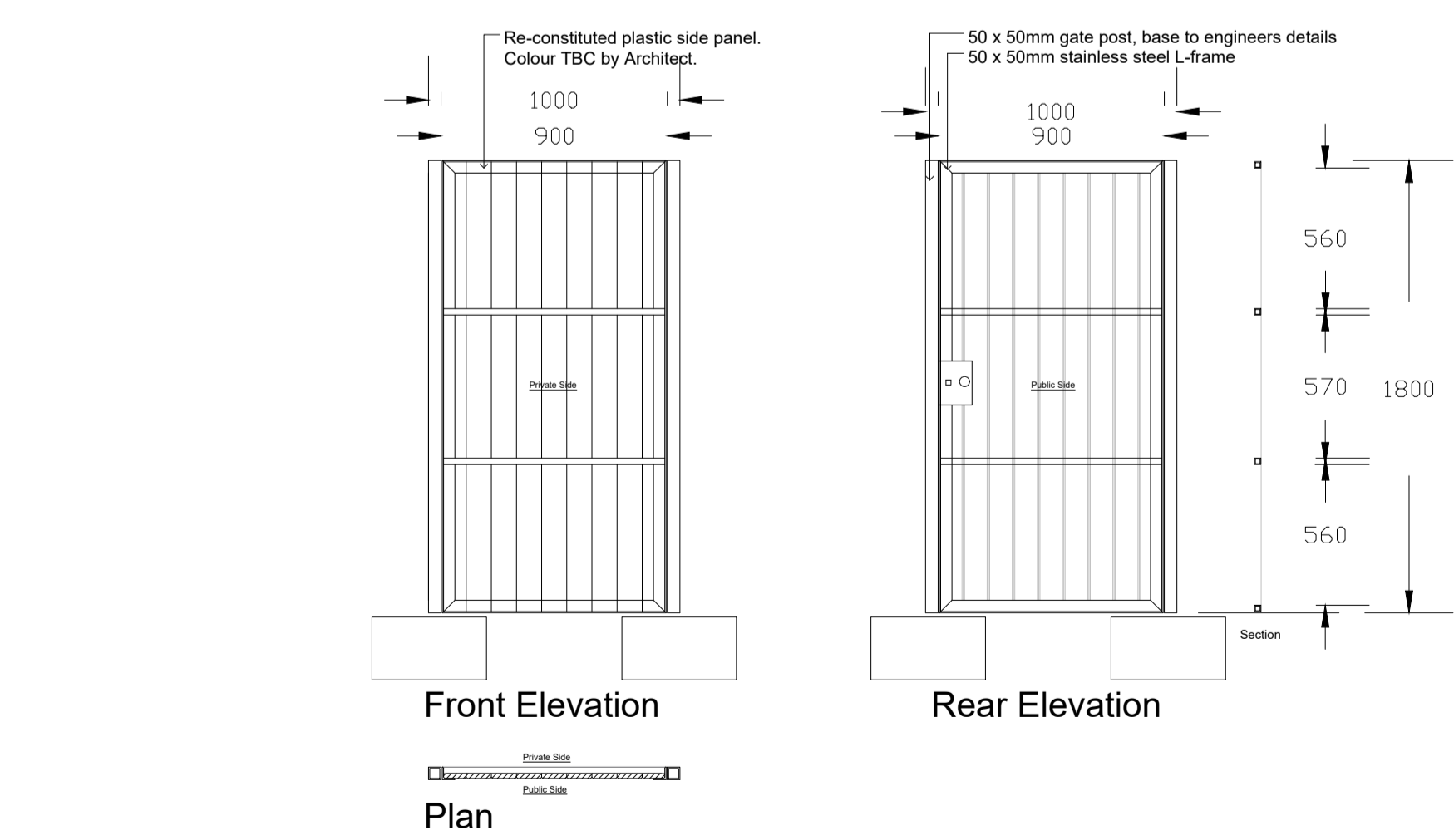
Type 01 -
215mm Blockwork Garden walls 1.2m high Rendered both sides on retaining wall to Engineers specification and detail

Type 02 -
215mm Blockwork Garden walls 2m high Rendered both sides Piers to engineers details

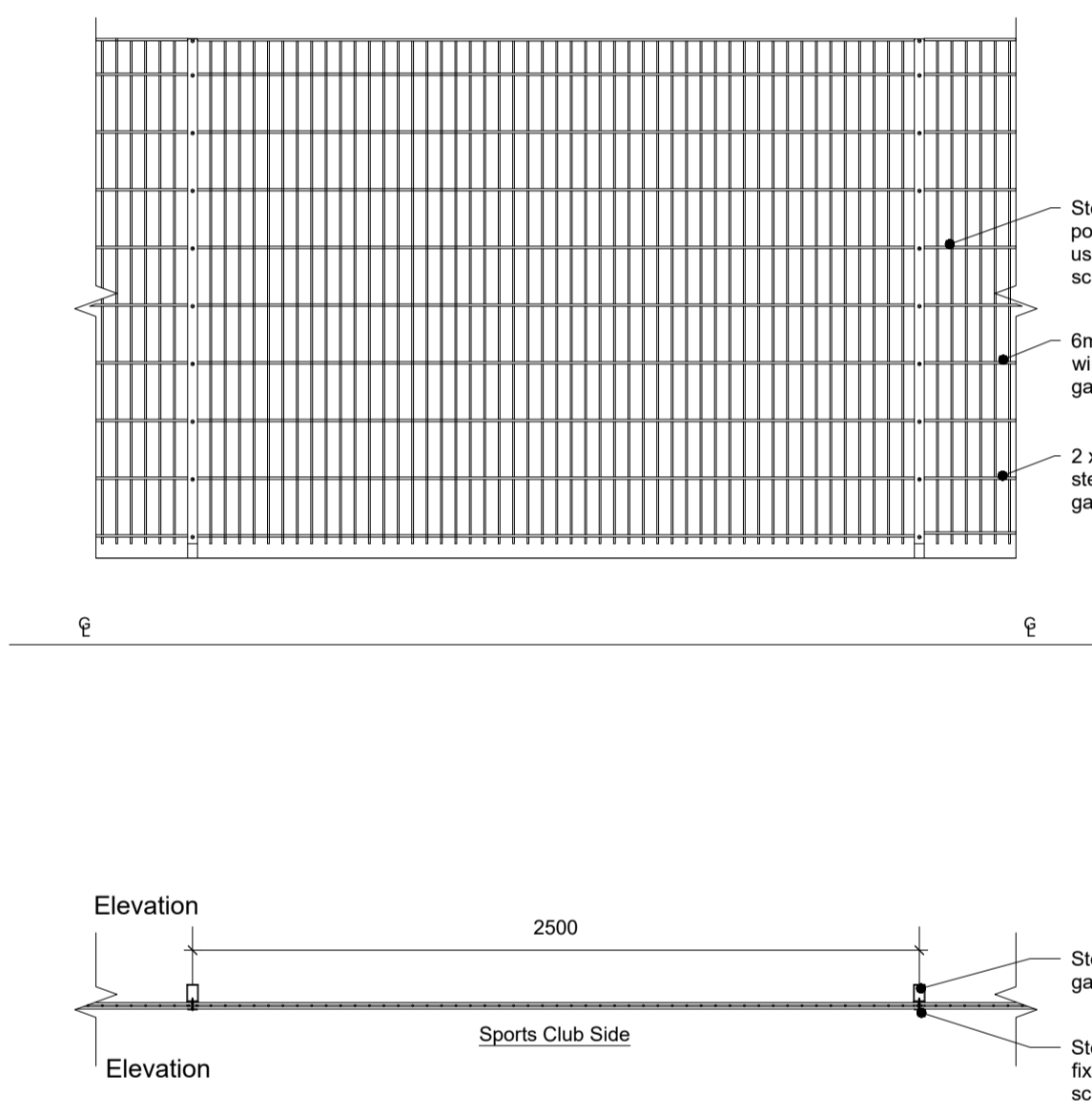
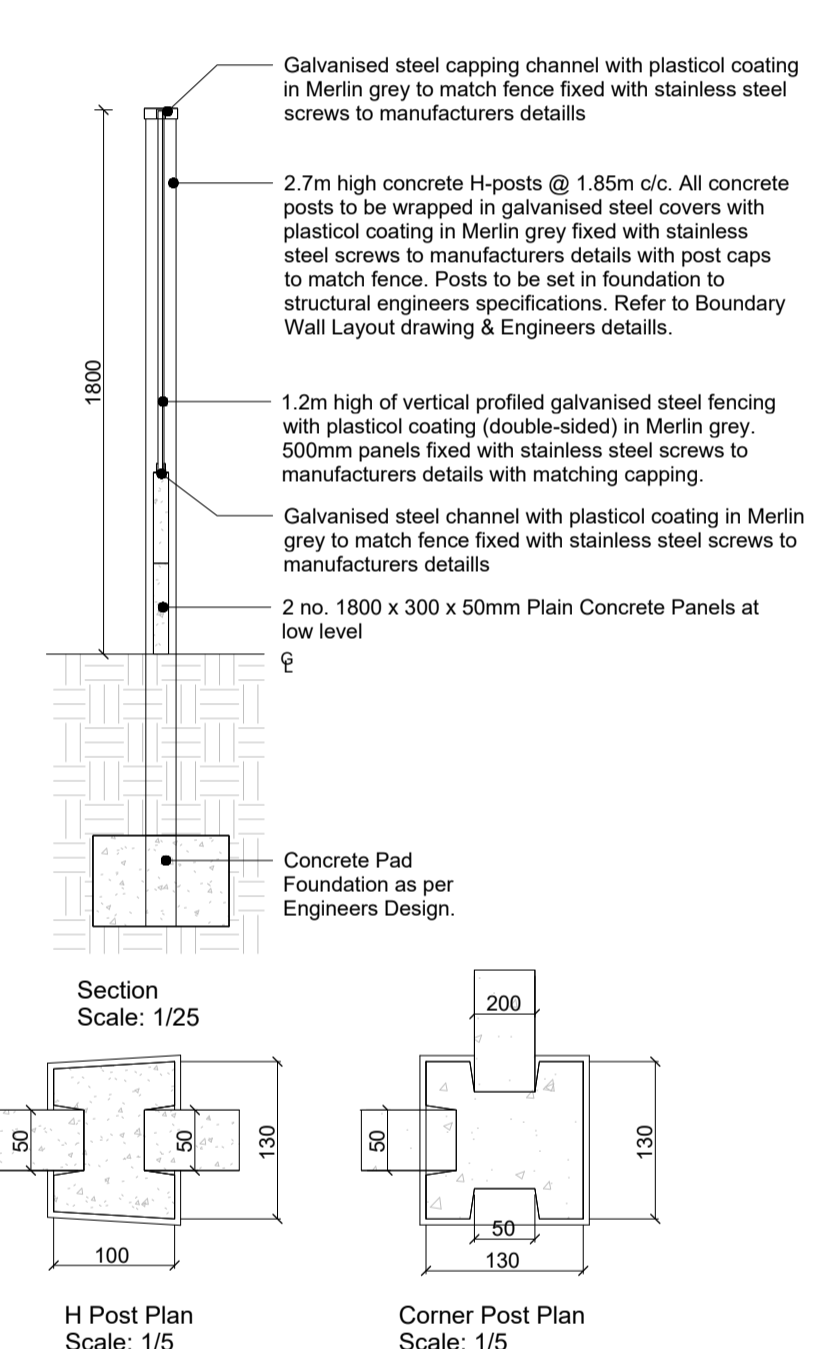
Type 03 -
215mm Blockwork Garden walls 1.8m high Rendered both sides on retaining wall to Engineers specification and detail



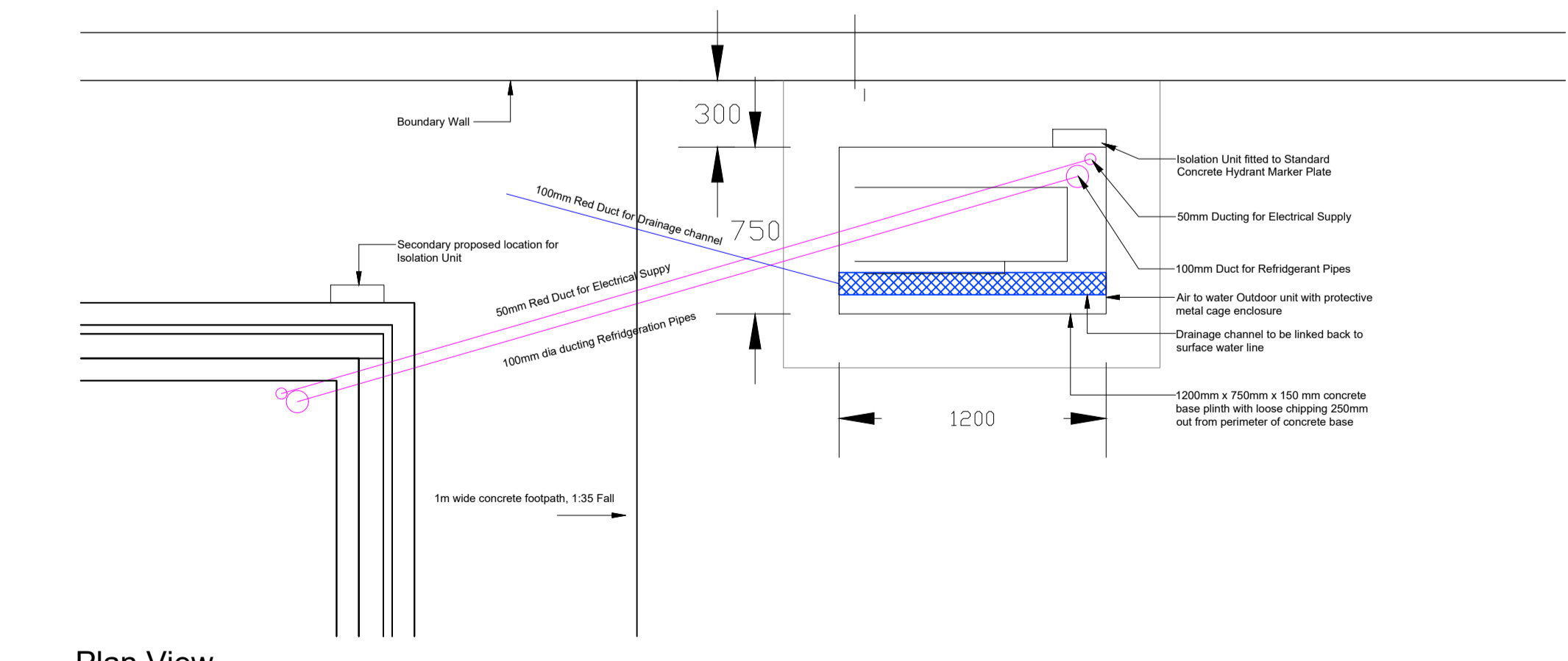
Type 04 -
Typical Plan & Section for Concrete Post & Panel Fence -1.8m high, 100mm wide



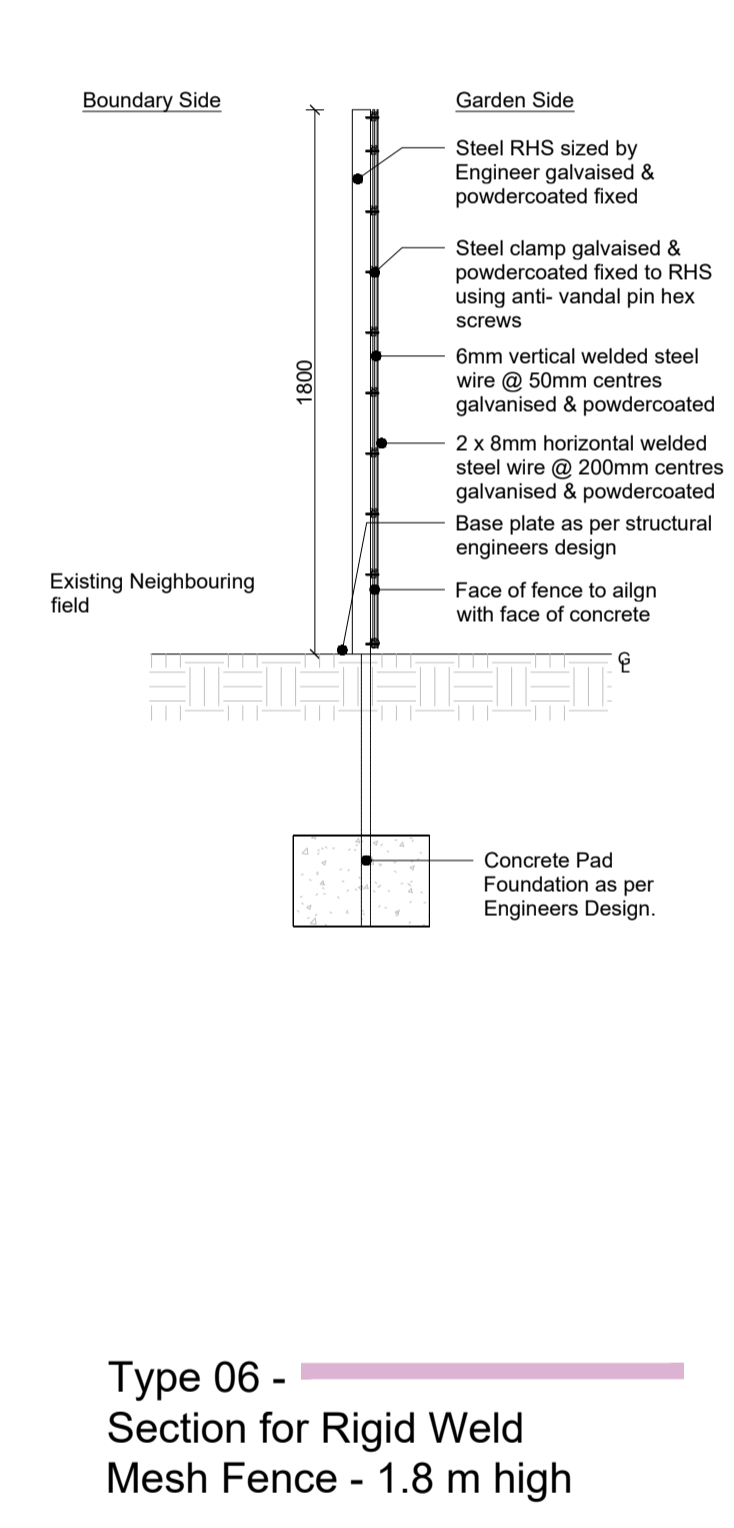
Garden Gate - Elevations and plan



Type 05 -
Typical Plan, Elevation & Section for Rigid Weld Mesh Fence on on retaining wall to Engineers specification and detail - 1.8 m high



Plan View
External Air to water unit - Plan



Type 06 -
Section for Rigid Weld Mesh Fence - 1.8 m high

PLANNING - SECTION 179A

Revision Schedule

Rev No.	Rev Description	Rev Date	Issued by	Issued to

Housing for All
A new Housing Plan for Ireland

WESTMEATH COUNTY COUNCIL
Comhairle Chontae na hIarmhí

WESTMEATH HOUSING DESIGN TEAM
CIVIC CENTRE, CHURCH ST, ATHLONE, N37 P2T5
Phone: 08964 42100
Web: www.westmeathoco.ie

PROJECT:
CONSTRUCTION OF 12 HOUSES AT BUNDAIRE ,KINNEGAD PHASE 4

TITLE:
PROPOSED BOUNDARY WALL DETAILS

Scale: 1 : 25	Datum: MALIN	Date: 20/10/2023
Drawing No: 129_03_006	Stage: PLANNING	Revision: -
Surveyed: AC & CH	Drawn: AC	Checked: TOH
Approved: -	Approved: -	Approved: -

File Name and Directory:
H\CAPITAL HOUSING DESIGN TEAM1-Capital Schemes\129 Bun Daire Legacy\Drawings\11 Planning\Drawings\129_03_Site Drawings