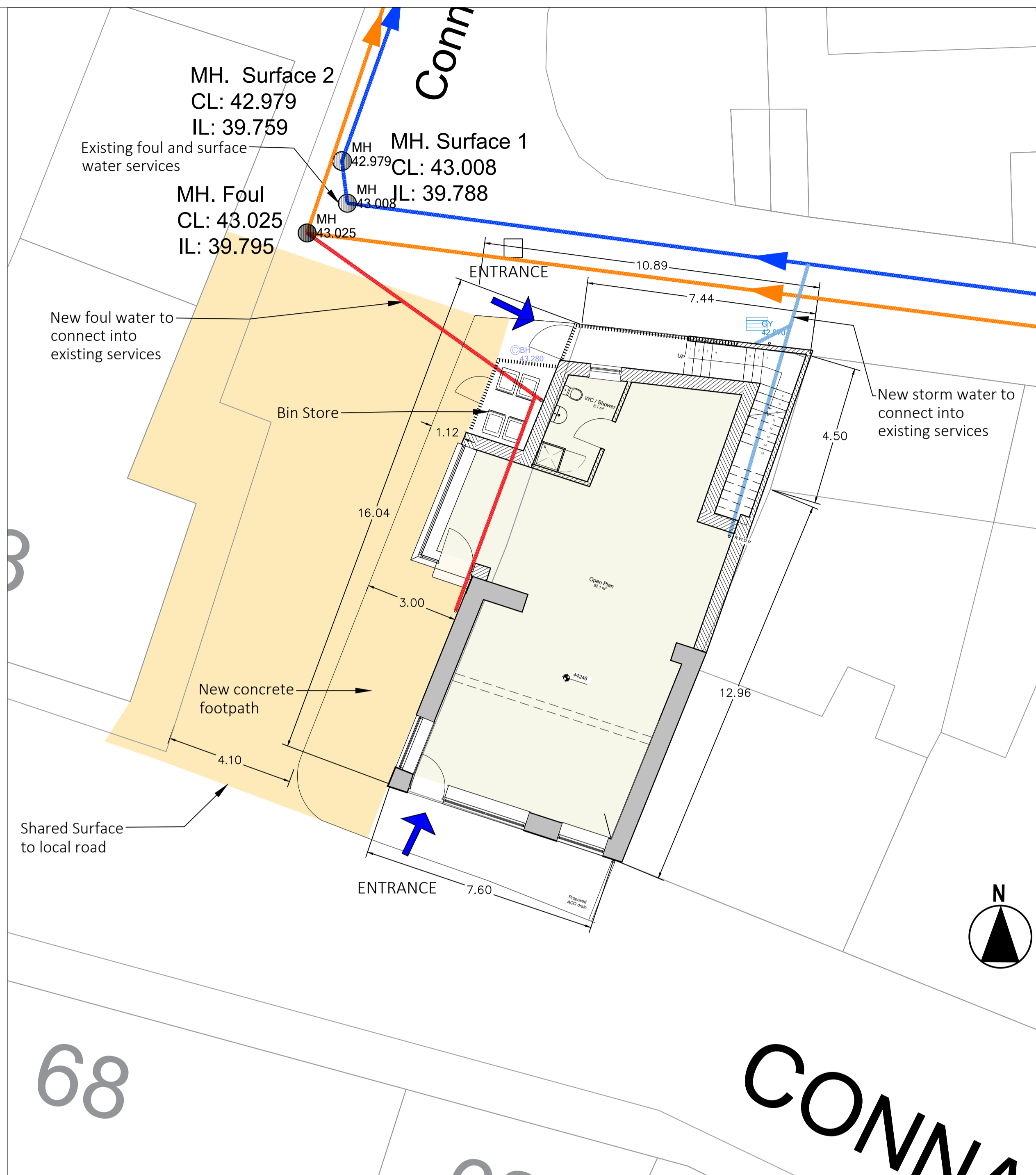
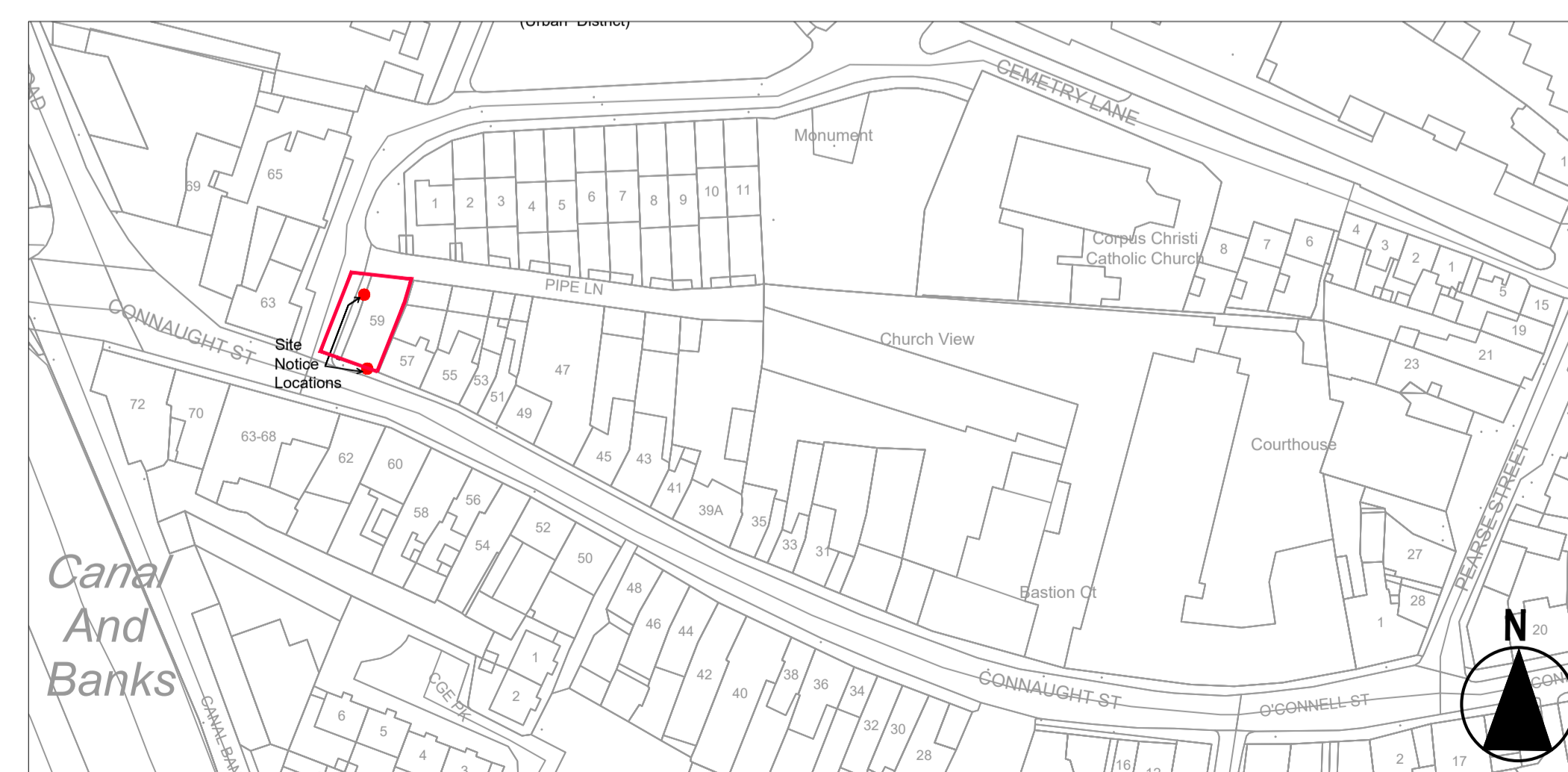


Existing Site Plan  
Scale 1:100



Proposed Site Plan  
Scale 1:100



Site Location Map  
Scale 1:1000

Westmeath Co Council  
O.S Map license No CYAL50334397

**PLANNING - PART 8**

Revision Schedule

Rev No.	Rev Description	Rev Date	Issued by	Issued to
-	PLANNING SUBMISSION	08/12/23	WCC	-

**Housing for All**  
A new Housing Plan for Ireland

**WESTMEATH COUNTY COUNCIL**  
Comhairle Chontae na hIarmhí

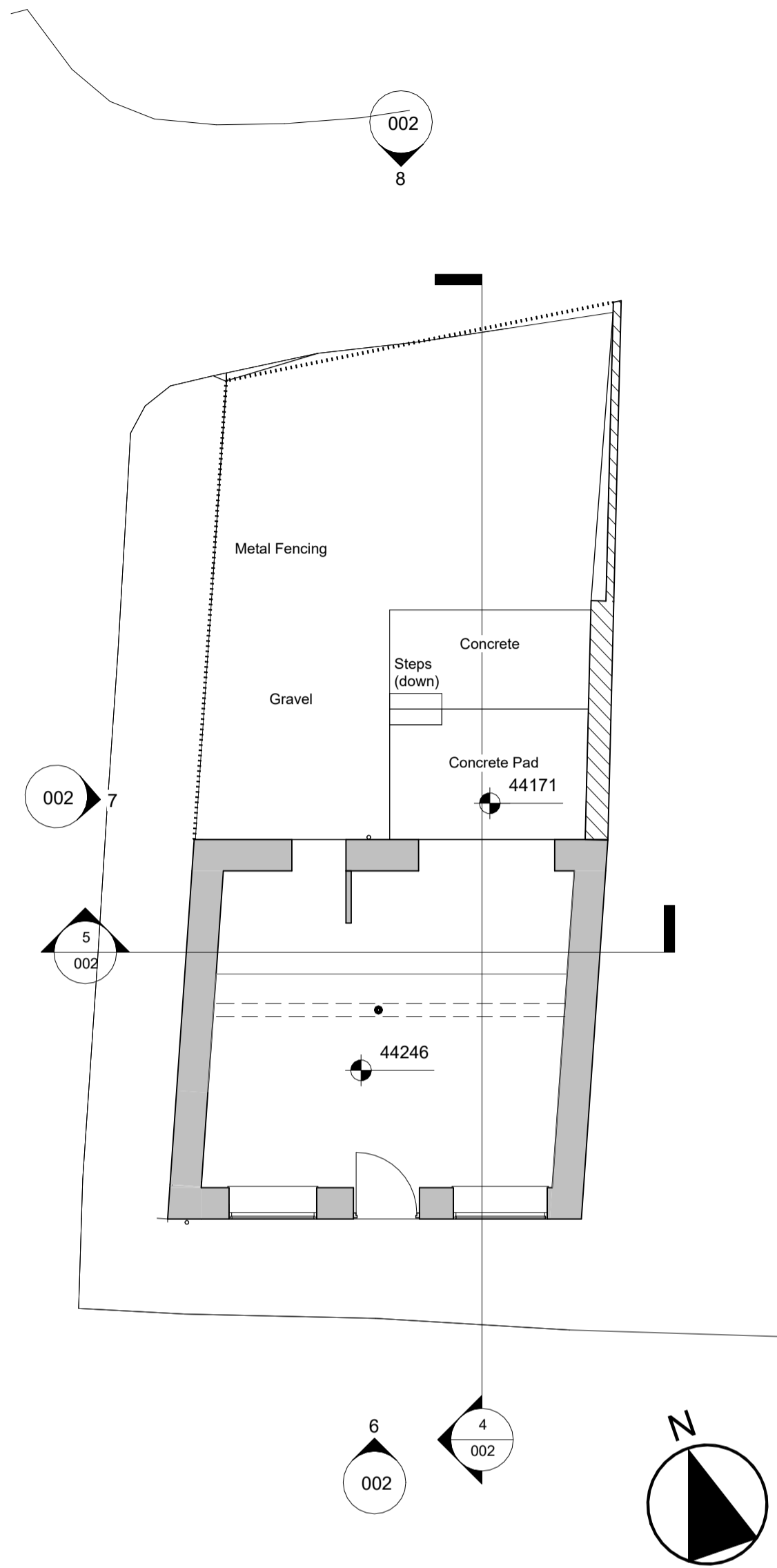
WESTMEATH HOUSING DESIGN TEAM  
CIVIC CENTRE, CHURCH ST, ATHLONE, N37 P2T5  
Phone: 09064 42100  
Web: www.westmeathcoco.ie

**PROJECT:**  
No.59 CONNAUGHT STREET, ATHLONE

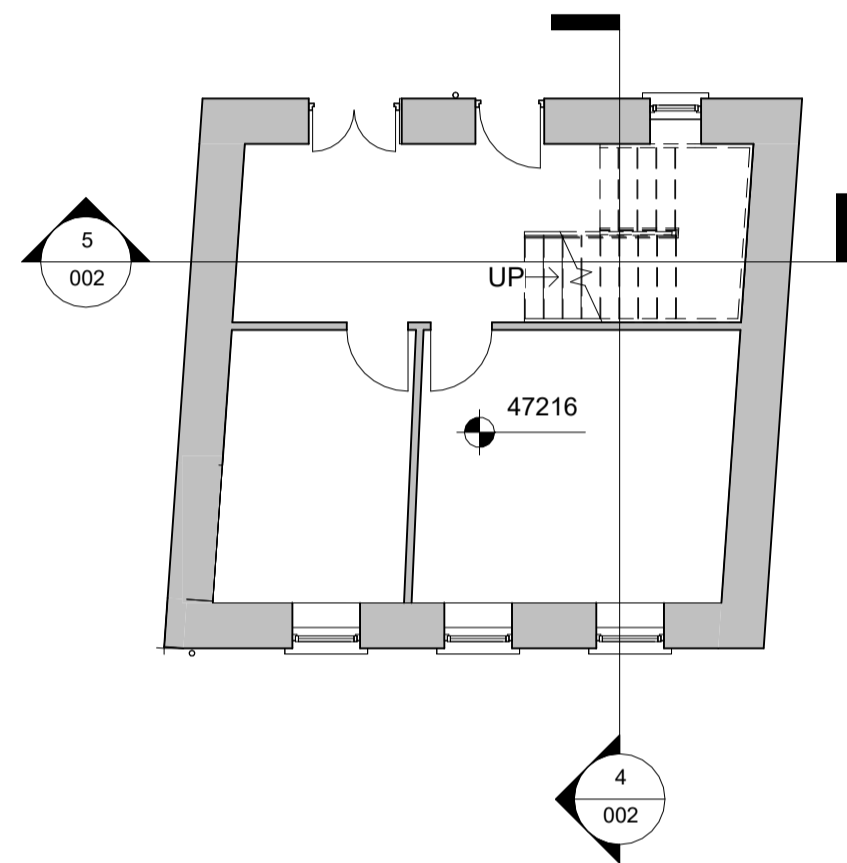
**TITLE:**  
Site Location Plan,  
Existing and Proposed Site Plans

Scale: As indicated @ A1	Datum: MALIN	Date: 16/05/23
Drawing No: 107c_03_001	Stage: PLANNING	Revision
Surveyed -	Drawn AC	Checked BmcC
Approved -		

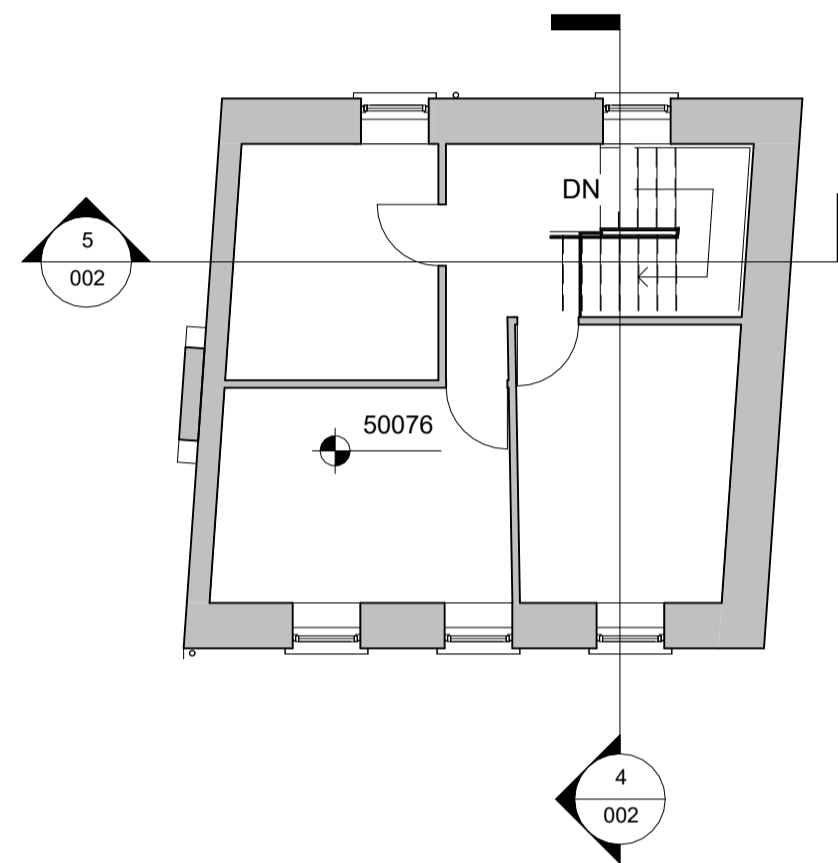
File Name and Directory:  
H:\CAPITAL HOUSING DESIGN TEAM\1-Capital Schemes\107c\_59 Connought\8 DRAWINGS\3 Part 8 - Planning\2\_DWG\10000 Site drawings\59 Site Plans



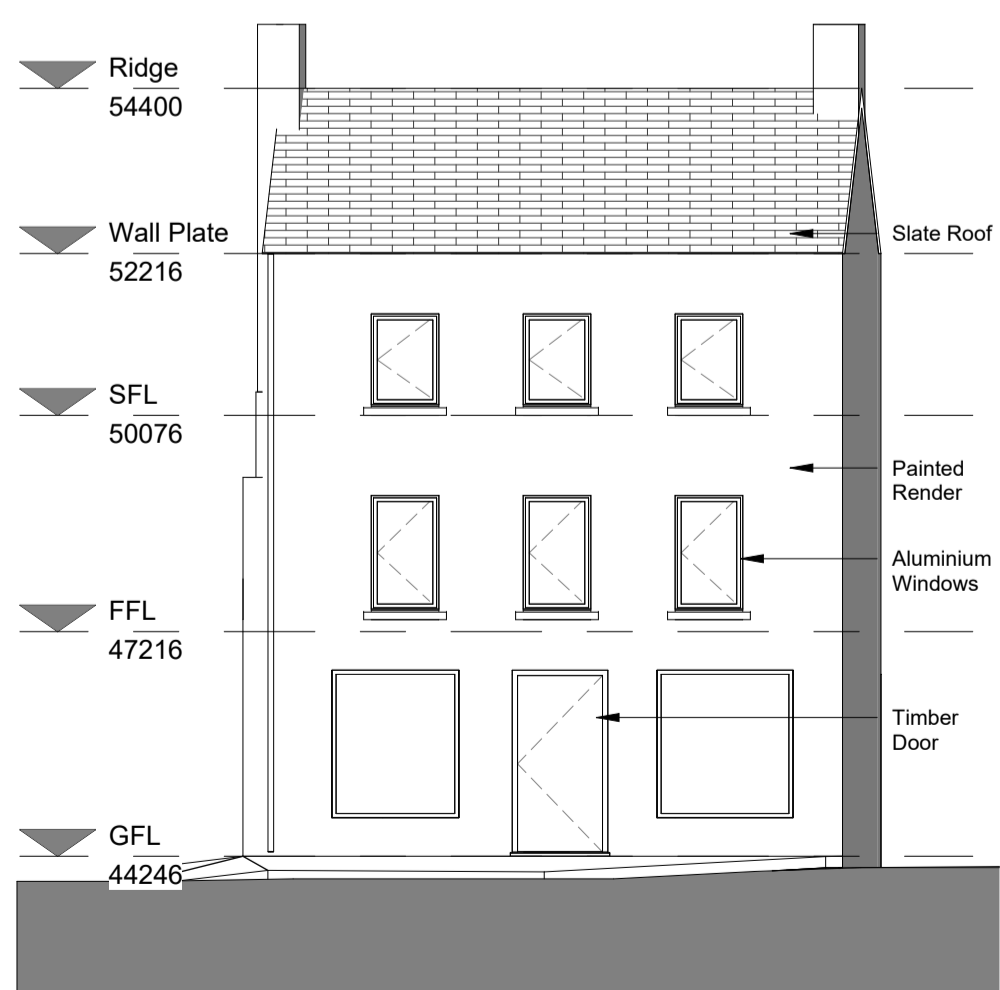
**1** Ground Floor Plan - Existing  
1 : 100



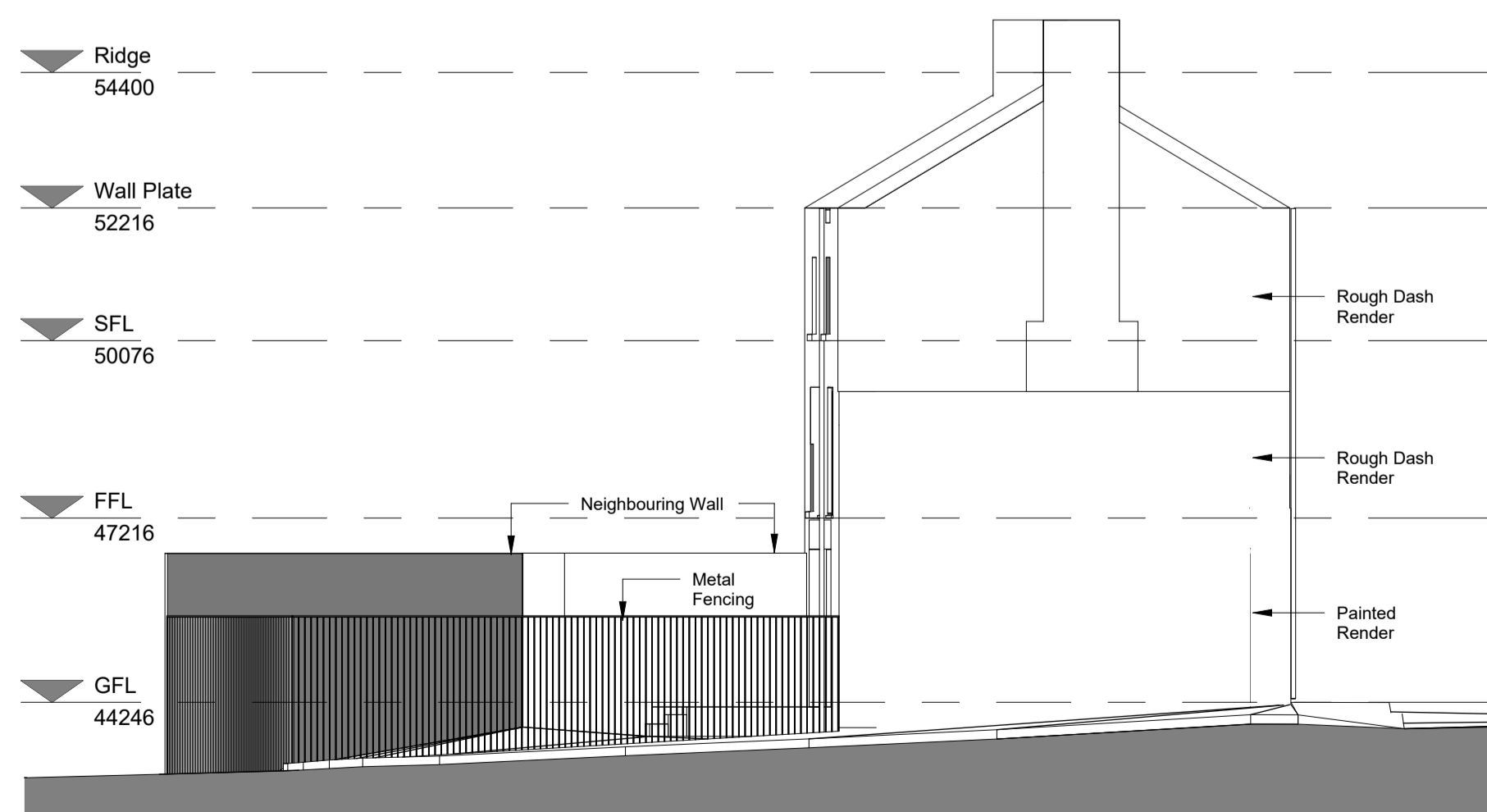
**2** First Floor Plan - Existing  
1 : 100



**3** Second Floor Plan - Existing  
1 : 100



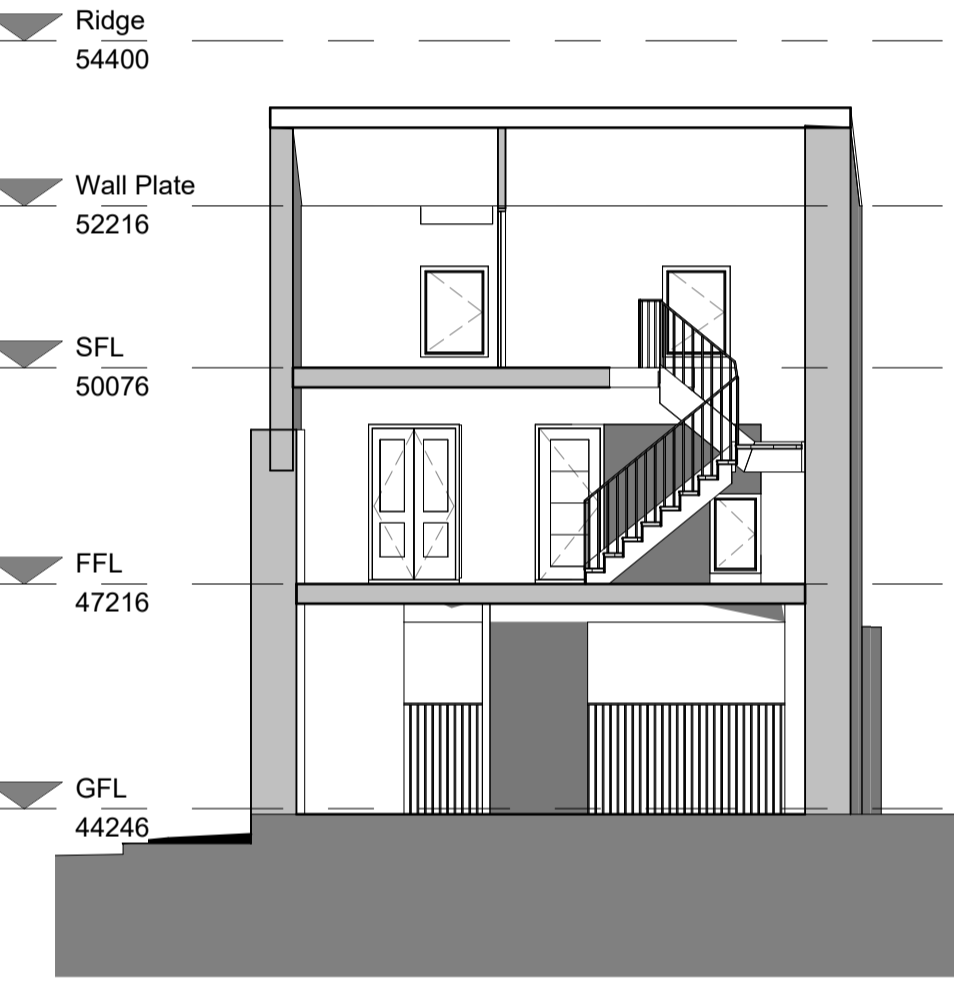
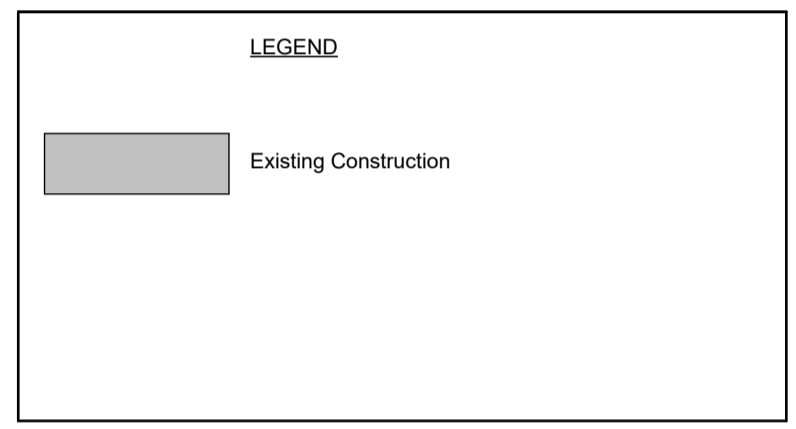
**6** South Elevation - Existing  
1 : 100



**7** West Elevation - Existing  
1 : 100



**4** Section 1 - Existing  
1 : 100



**5** Section 2 - Existing  
1 : 100

**PART 8**

Revision Schedule

Rev No.	Rev Description	Rev Date	Issued by	Issued to
1	PLANNING SUBMISSION	08/12/23	WCC	

**Housing for All**  
A new Housing Plan for Ireland

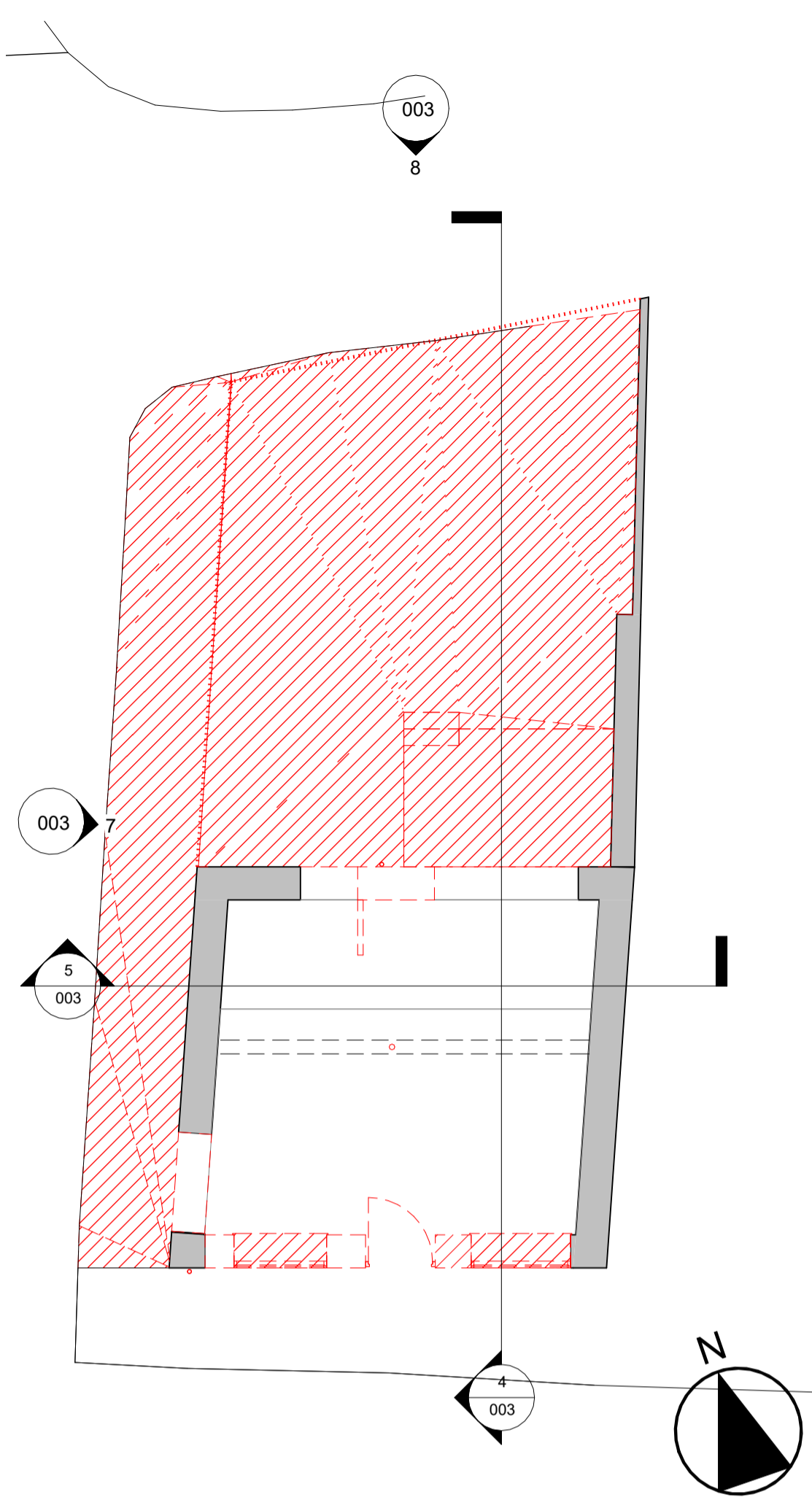
**WESTMEATH HOUSING DESIGN TEAM**  
CIVIC CENTRE, CHURCH ST, ATHLONE, N37 P2T5  
Phone: 09064 42100  
Web: www.westmeathcoco.ie

**PROJECT:**  
59 CONNAUGHT STREET, ATHLONE

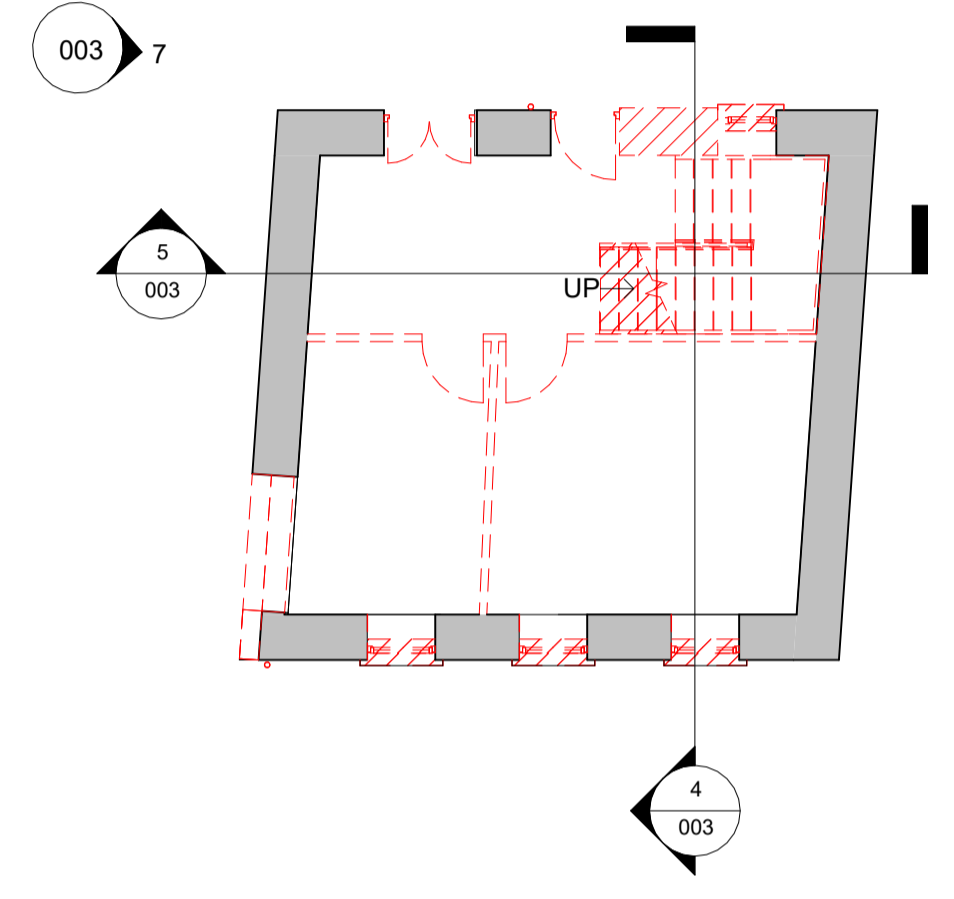
**TITLE:**  
Existing Plans, Sections and elevations

Scale: As indicated @ A1	Datum: MALIN	Date: 04/12/23
Drawing No: 107c_03_002	Stage: PLANNING	Revision
Survived	Drawn	Checked
	AC	BmcC
Approved		
File Name and Directory:		

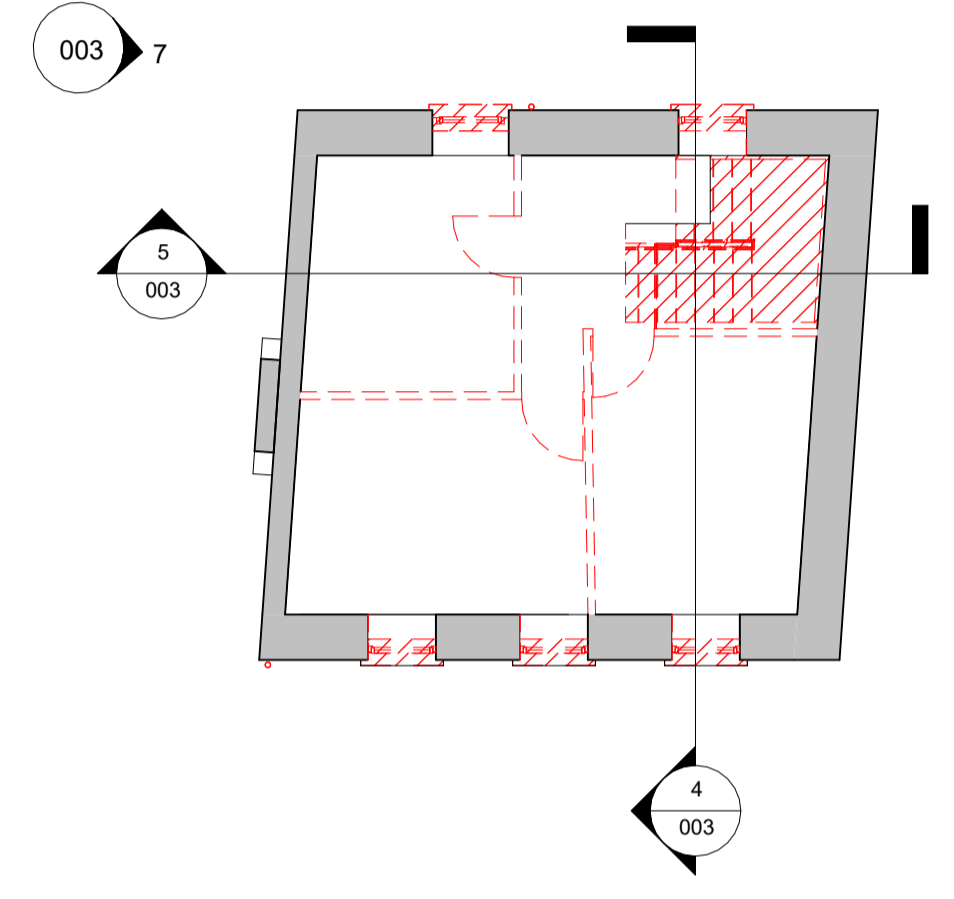
H:\CAPITAL HOUSING DESIGN TEAM\1-Capital Schemes\107c 59 Connaught SDR\DRAWINGS\3. Part 8 - Planning\1. REV\107c\_03\_002.rvt



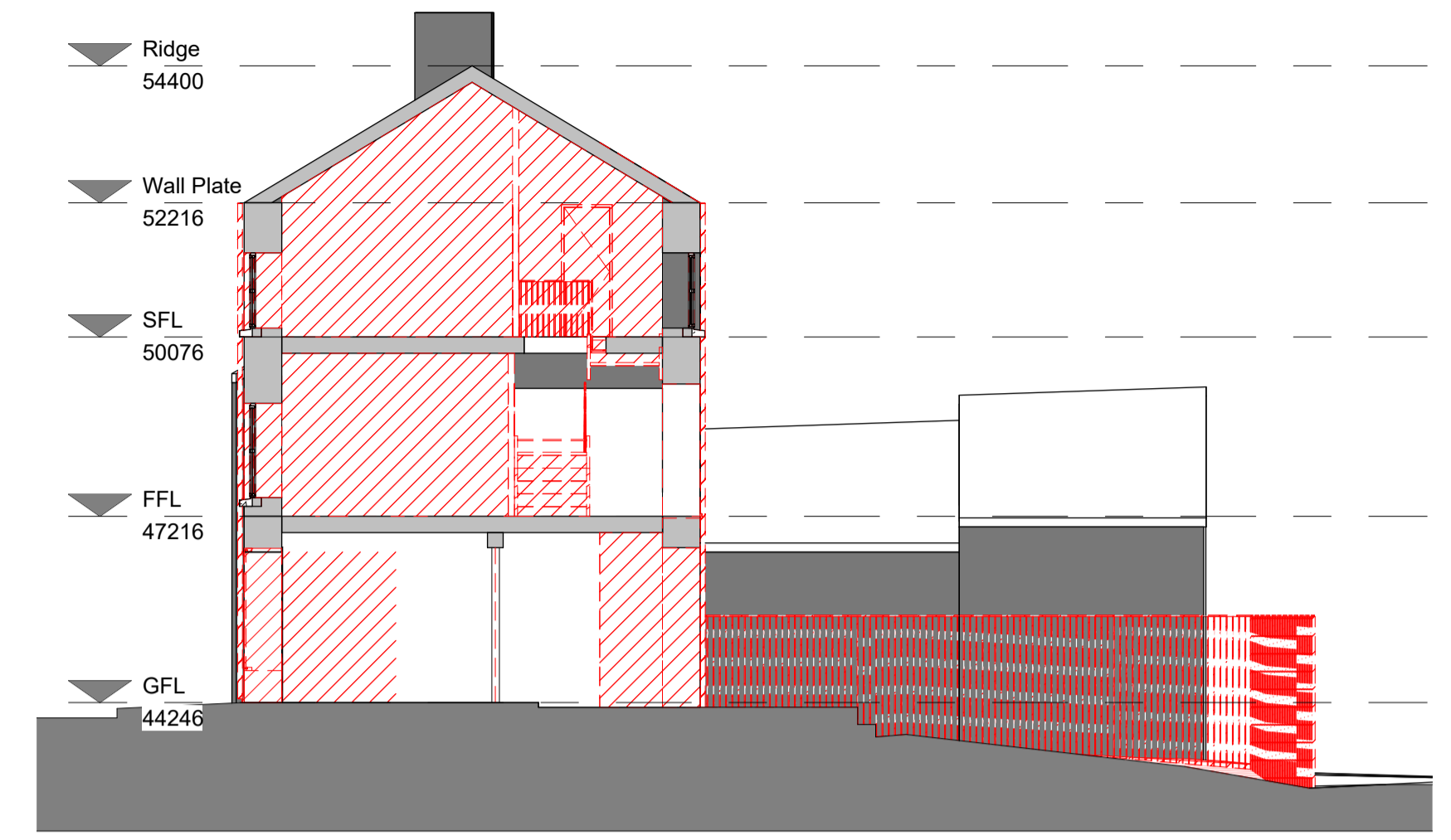
**1 Ground Floor Plan - Demolition**  
1 : 100



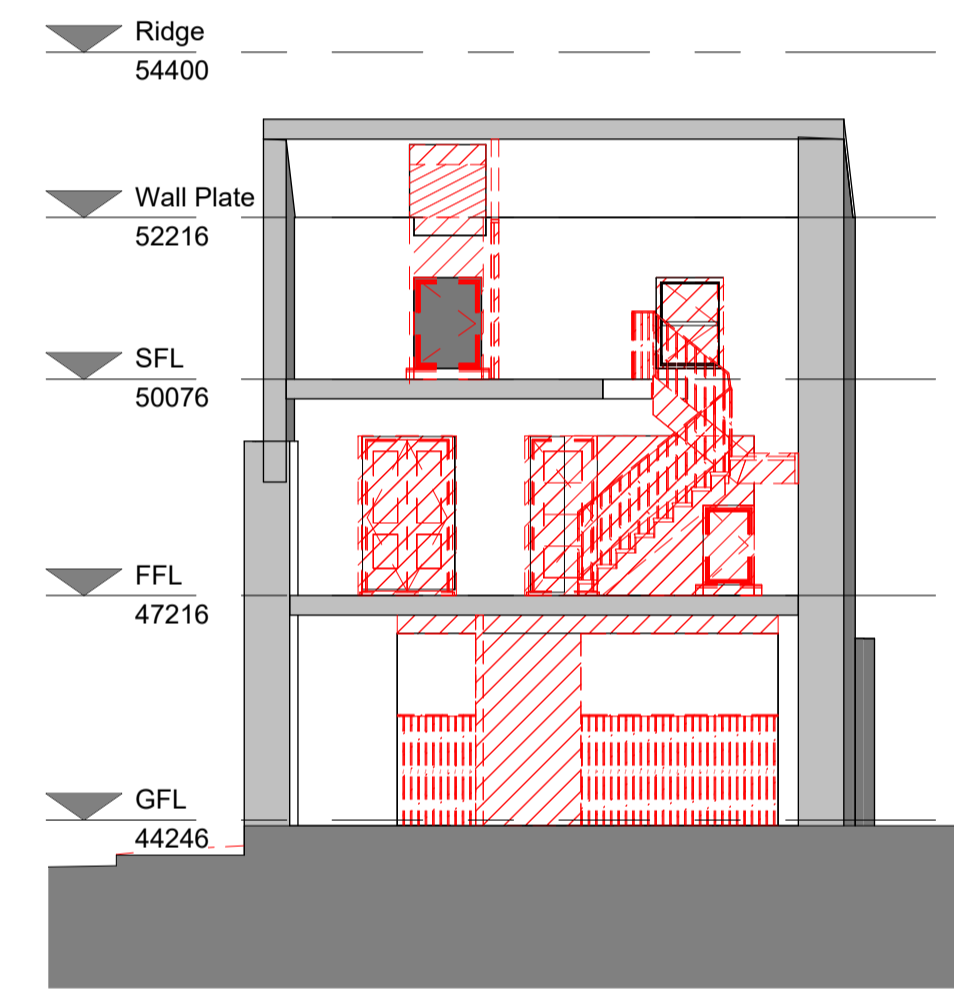
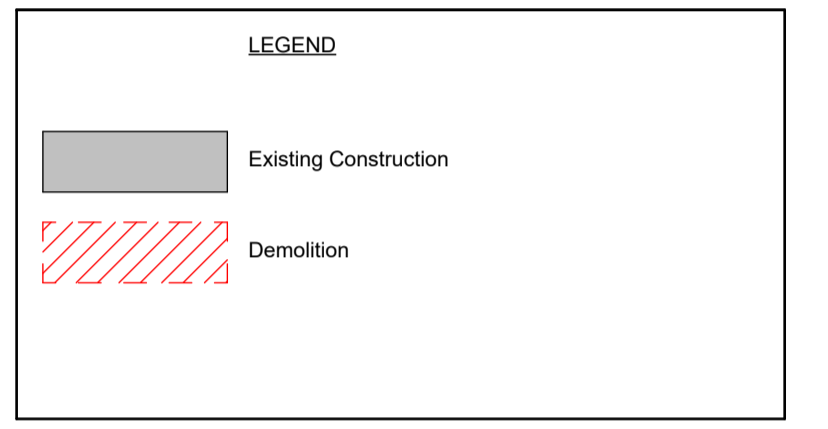
**2 First Floor Plan - Demolition**  
1 : 100



**3 Second Floor Plan - Demolition**  
1 : 100



**4 Section 1 - Demolition**  
1 : 100

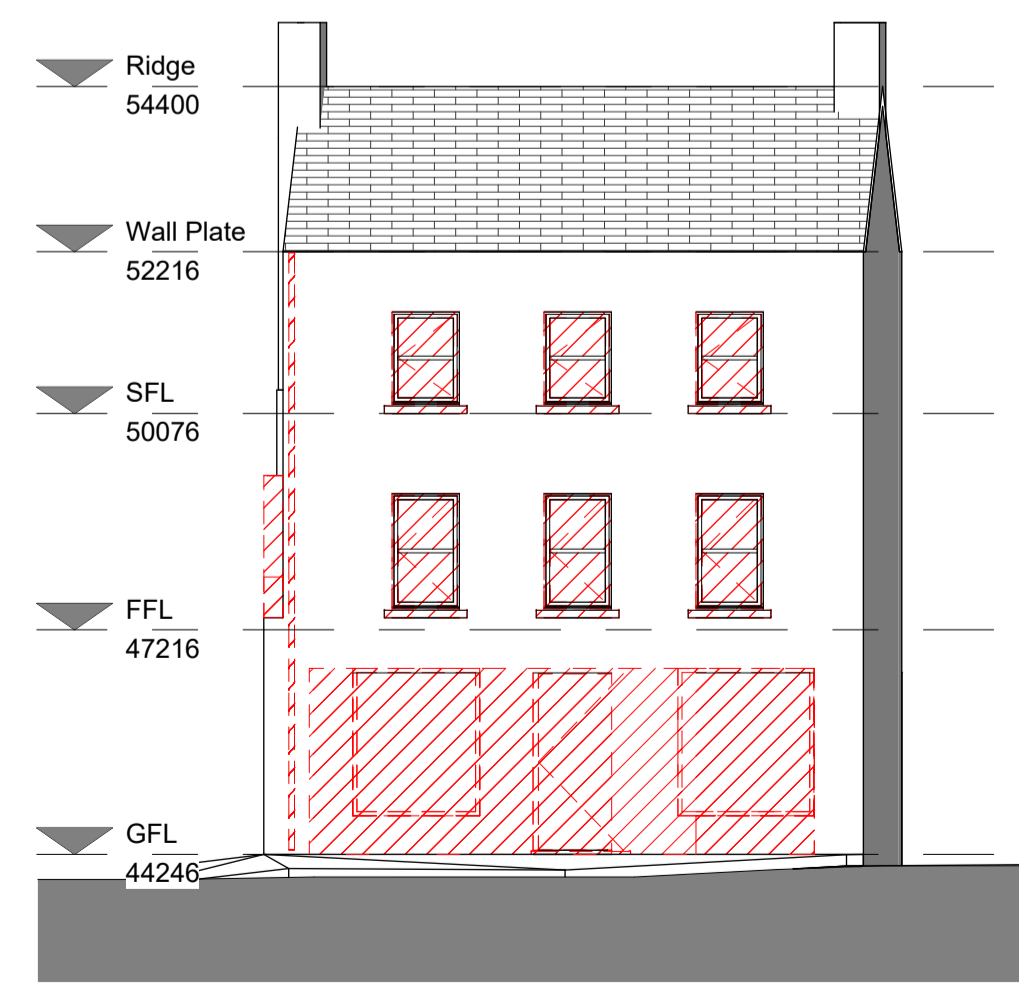


**5 Section 2 - Demolition**  
1 : 100

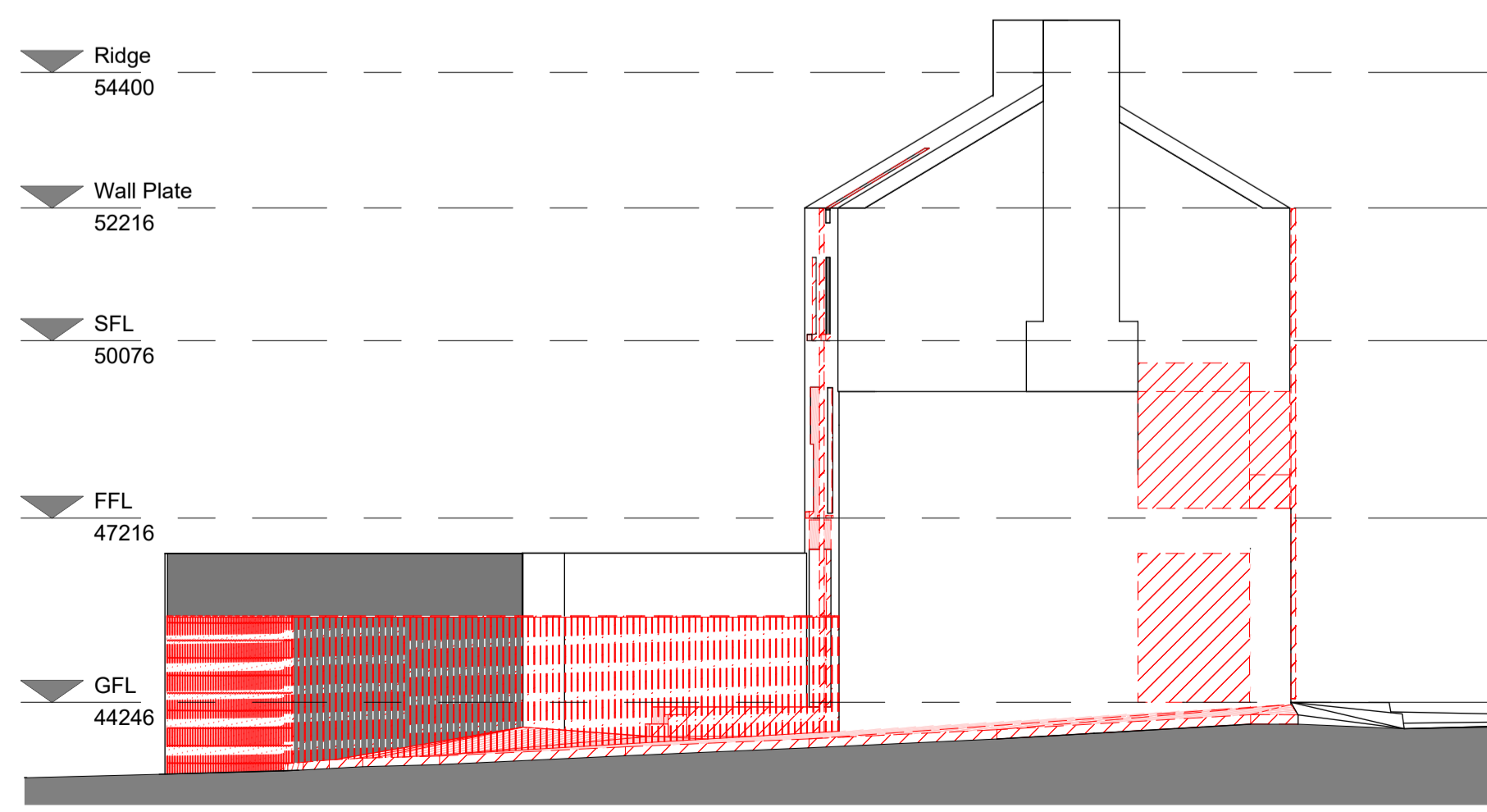
**PART 8**

Revision Schedule

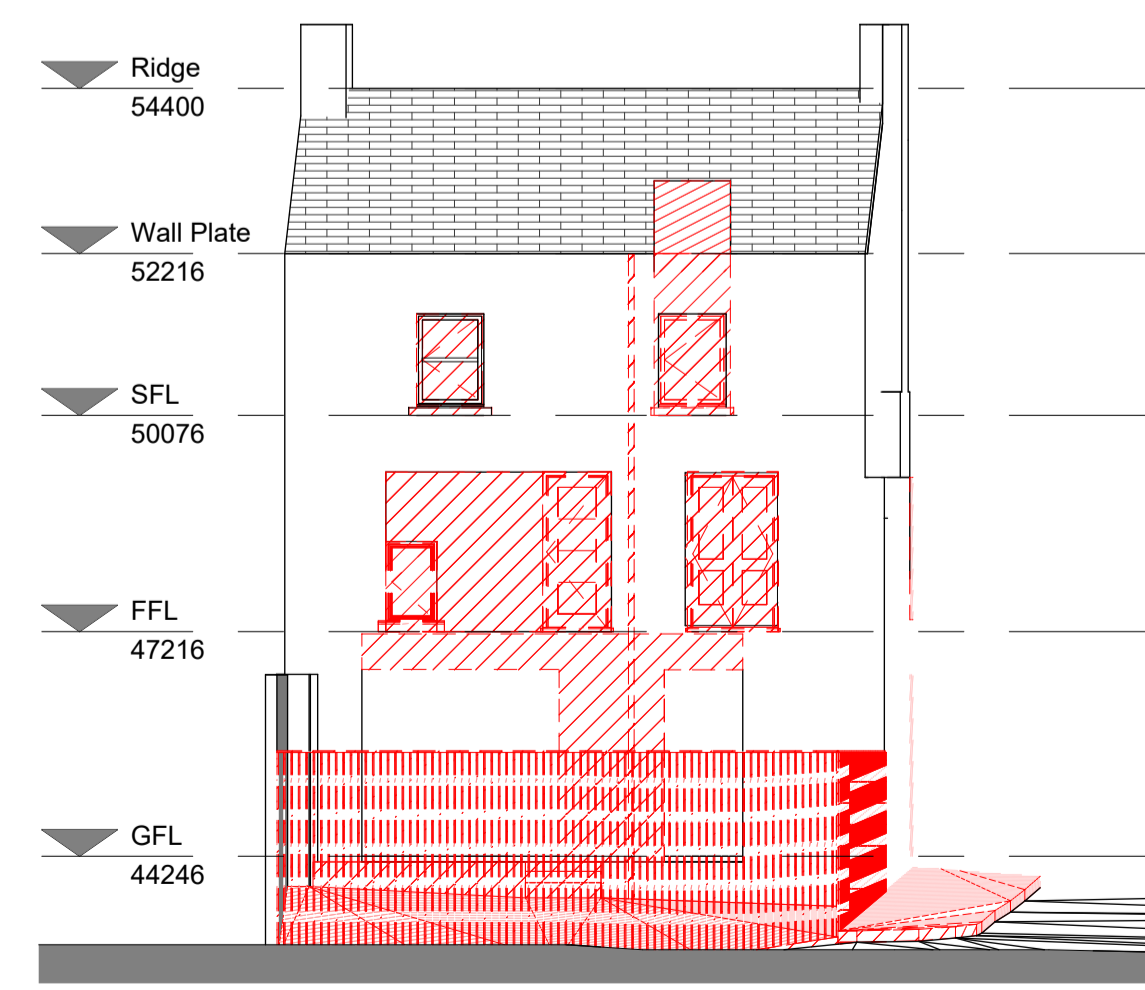
Rev No.	Rev Description	Rev Date	Issued by	Issued to
1	PLANNING SUBMISSION	08/12/23	WCC	



**6 South Elevation - Demolition**  
1 : 100

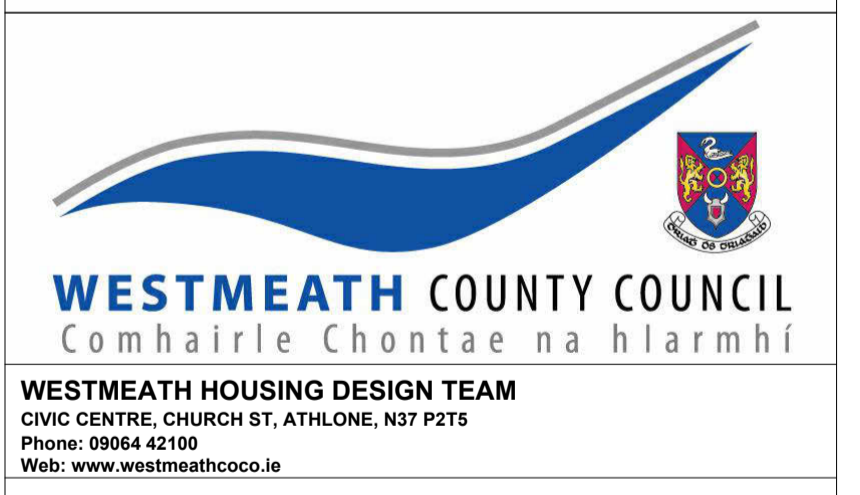


**7 West Elevation - Demolition**  
1 : 100



**8 North Elevation - Demolition**  
1 : 100

**Housing for All**  
A new Housing Plan for Ireland

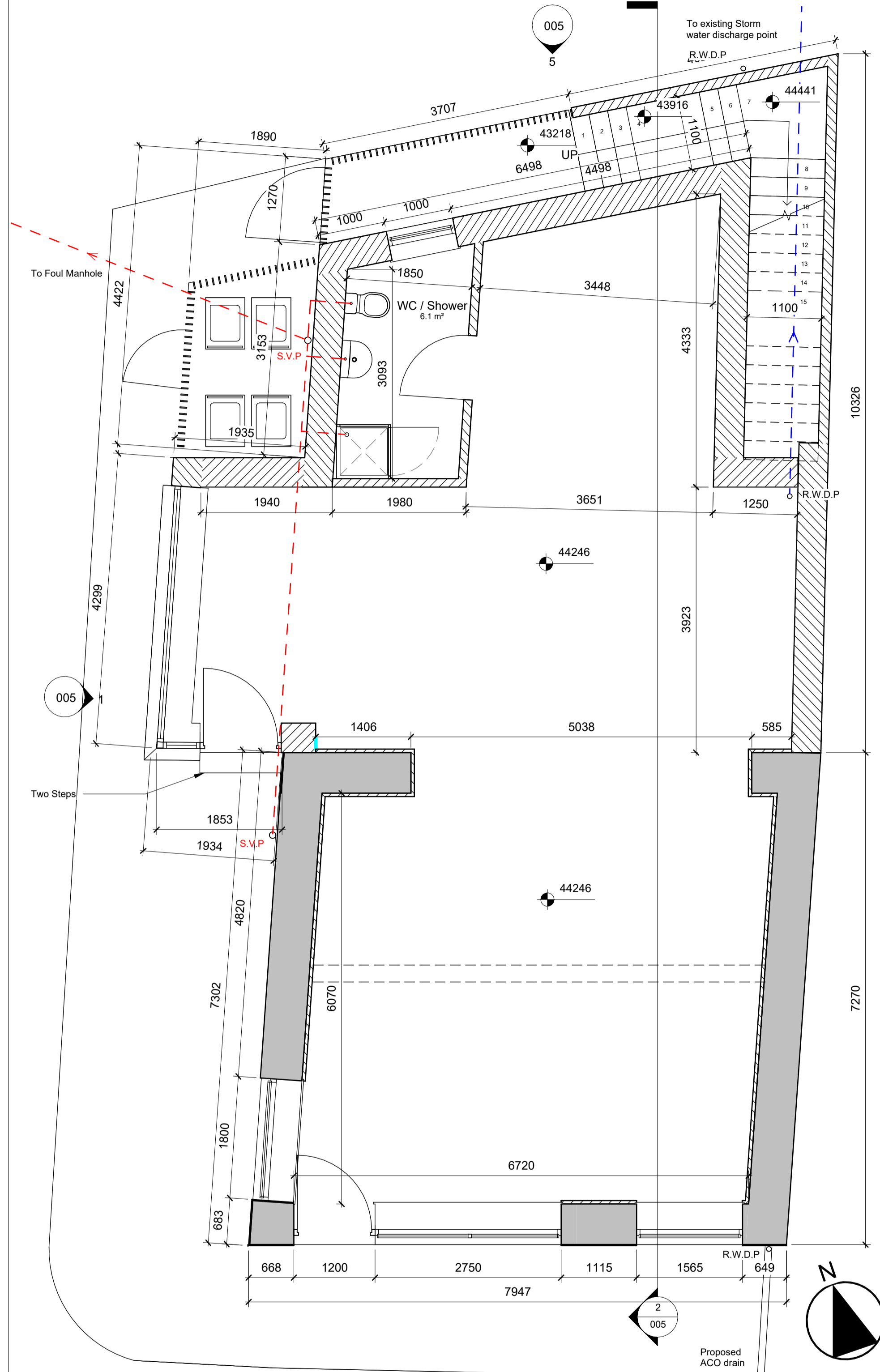


**PROJECT:**  
59 CONNAUGHT STREET, ATHLONE

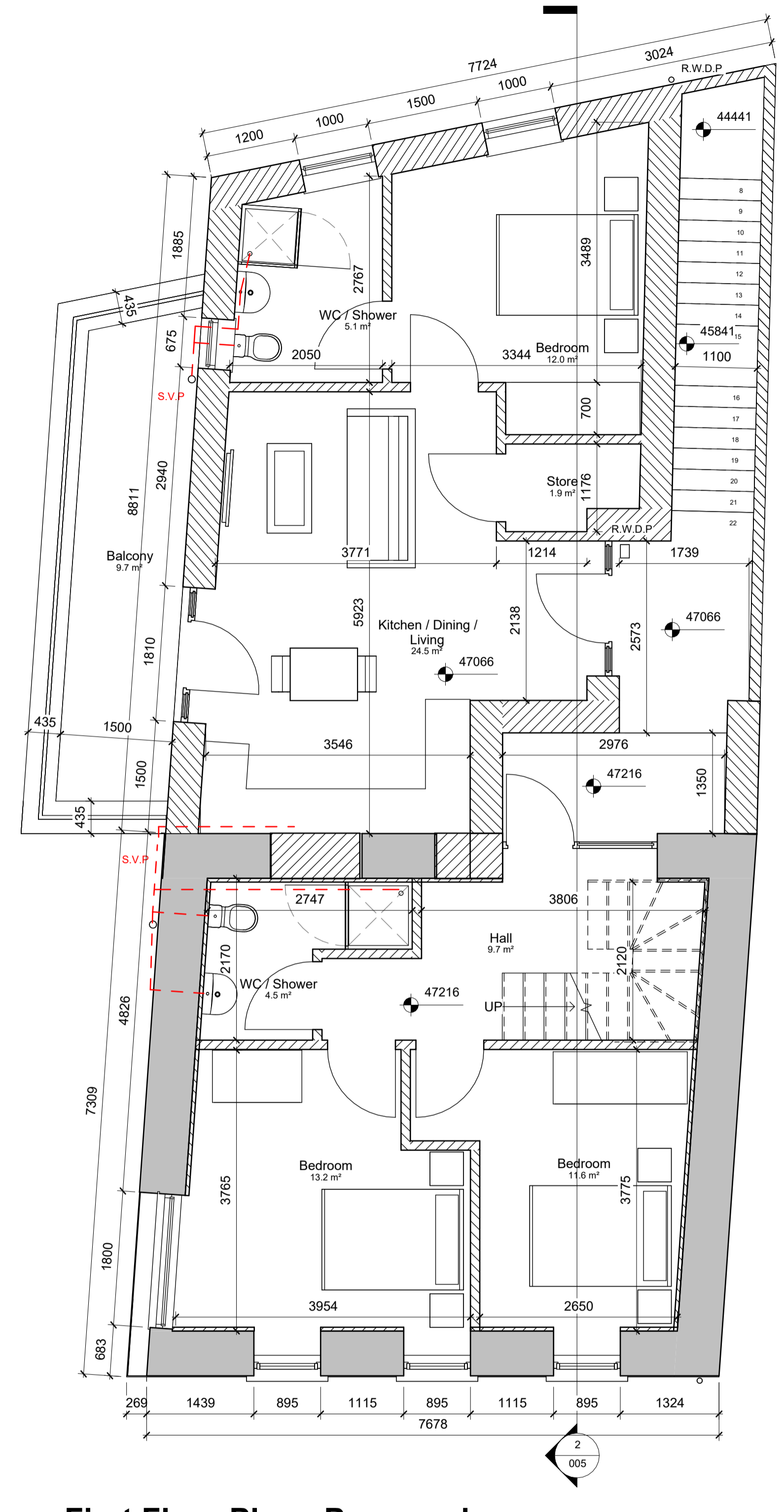
**TITLE:**  
Demolition Plans, Sections and elevations

Scale: As indicated @ A1	Datum: MALIN	Date: 05/15/23
Drawing No: 107c_03_003	Stage: PLANNING	Revision
Survived	Drawn	Checked
	AC	BmcC
Approved		

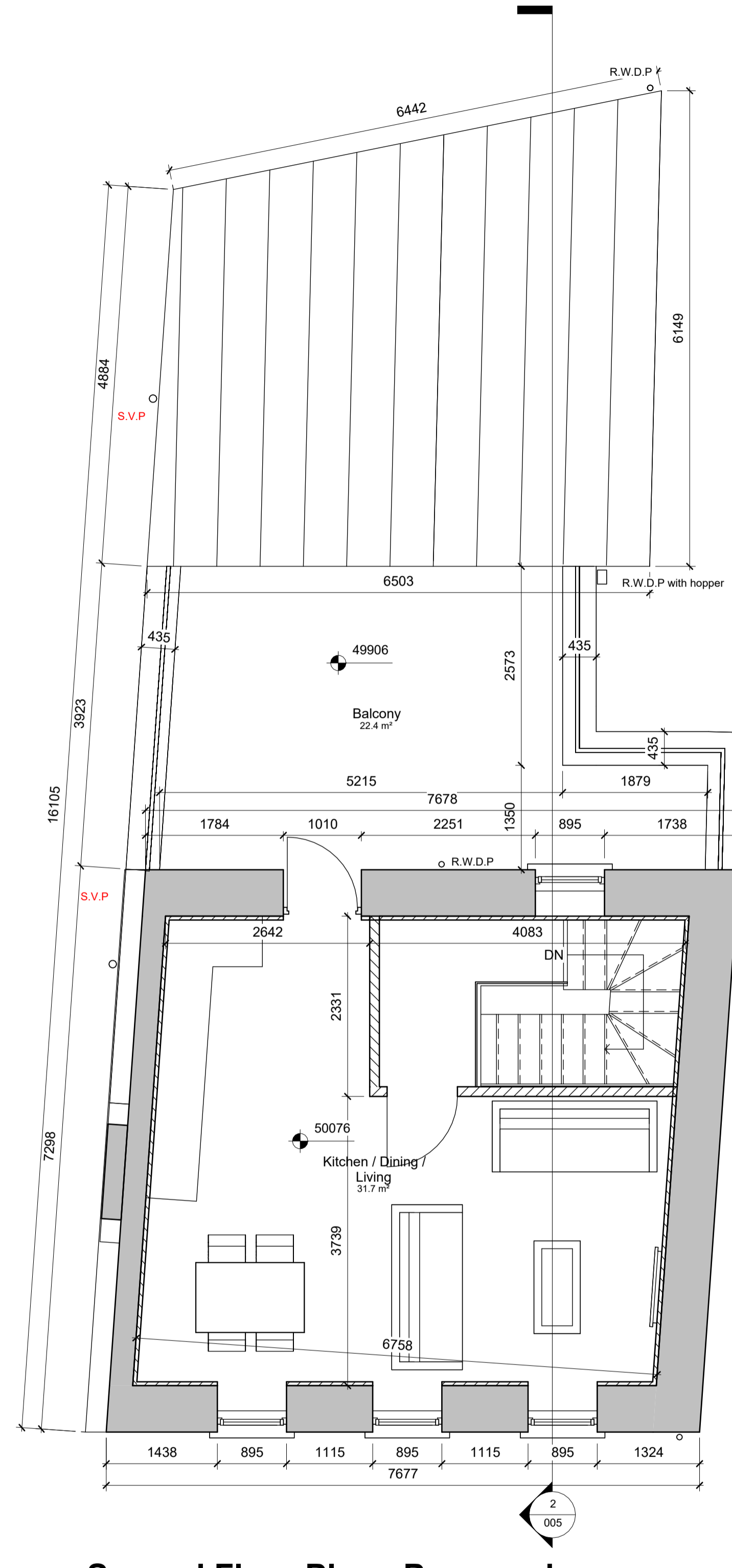
File Name and Directory:  
H:\CAPITAL HOUSING DESIGN TEAM\1-Capital Schemes\107c 59 Connaught SDR\DRAWING\03\_Plan 8 - Planning\REVIT\Model.rvt



**2 First Floor Plan - Proposed**  
1 : 50



**3 Second Floor Plan - Proposed**  
1 : 50



**LEGEND**

- Existing Construction
- New Construction
- Proposed Foul Water Drainage
- Proposed Storm Water Drainage

**PART 8**

**Revision Schedule**

Rev No.	Rev Description	Rev Date	Issued by	Issued to
1	PLANNING SUBMISSION	08/12/23	WCC	

**Housing for All**  
A new Housing Plan for Ireland

**WESTMEATH COUNTY COUNCIL**  
Comhairle Chontae na hIarmhí

WESTMEATH HOUSING DESIGN TEAM  
CIVIC CENTRE, CHURCH ST, ATHLONE, N37 P215  
Phone: 09064 42100  
Web: www.westmeathcoco.ie

**PROJECT:**  
59 CONNAUGHT STREET, ATHLONE

**TITLE:**  
Proposed Plans

**Scale:** As indicated  
**Datum:** MALIN  
**Date:** 05/15/23

**Drawing No:** 107c\_03\_004  
**Stage:** PLANNING  
**Revision:**

Surveved	Drawn	Checked	Approved
	AC	BmcC	-

**File Name and Directory:**  
H:\CAPITAL HOUSING DESIGN TEAM1-Capital Schemes\107c\_59 Connaught SDR\DRAWINGS\3. Part 8-Planning\107c\_03\_004.rvt

**TABLE - SPACE PROVISION AND ROOM SIZES FOR TYPICAL DWELLINGS**

Areas in accordance with Design Manual for Quality Housing, DOEHLG 2022

Apartment Block 1	TARGET GROSS FLOOR AREA (m <sup>2</sup> )	MINIMUM - MAIN LIVING ROOM (m <sup>2</sup> )	AGGREGATE LIVING AREA (m <sup>2</sup> )	AGGREGATE BEDROOM (m <sup>2</sup> )	STORAGE (m <sup>2</sup> )	Private Amenity Space (m <sup>2</sup> )
Ground Floor						
RETAIL	98.5m <sup>2</sup>					
Type 1 - First Floor						
1 BED / 2 PERSON APARTMENT	44.8m <sup>2</sup>	11m <sup>2</sup>	24.5m <sup>2</sup>	12m <sup>2</sup>	3m <sup>2</sup>	9.7m <sup>2</sup>
	45m <sup>2</sup>	(45m <sup>2</sup> + 10% = 49.5m <sup>2</sup> )	23m <sup>2</sup>	11.4m <sup>2</sup>	3m <sup>2</sup>	5m <sup>2</sup>
Type 2 - First and Second Floor Duplex						
2 BED / 4 PERSON APARTMENT	81.7m <sup>2</sup>	13m <sup>2</sup>	31.7m <sup>2</sup>	25m <sup>2</sup>	7m <sup>2</sup>	22.4m <sup>2</sup>
	73m <sup>2</sup>	(73m <sup>2</sup> + 10% = 80.3m <sup>2</sup> )	30m <sup>2</sup>	25m <sup>2</sup>	7m <sup>2</sup>	7m <sup>2</sup>

**1 Ground Floor Plan - Proposed**  
1 : 50



**1 West Elevation - Proposed**  
1 : 50



**4 South Elevation - Proposed**  
1 : 50



**5 North Elevation - Proposed**  
1 : 50



**2 Section 1 - Proposed**  
1 : 100

LEGEND

	Existing Construction
	New Construction
	Proposed Foul Water Drainage
	Proposed Storm Water Drainage

**PART 8**

Revision Schedule

Rev No.	Rev Description	Rev Date	Issued by	Issued to
1	PLANNING SUBMISSION	08/12/23	WCC	

**Housing for All**  
A new Housing Plan for Ireland

**WESTMEATH COUNTY COUNCIL**  
Comhairle Chontae na hIarmhí

**WESTMEATH HOUSING DESIGN TEAM**  
CIVIC CENTRE, CHURCH ST, ATHLONE, N37 P2T5  
Phone: 09064 42100  
Web: www.westmeathcoco.ie

**PROJECT:**  
59 CONNAUGHT STREET, ATHLONE

**TITLE:**  
Proposed Sections and Elevations

**Scale:** As indicated @ A1  
**Datum:** MALIN  
**Date:** 05/18/23

Drawing No:	Stage:	Revision
107c_03_005	PLANNING	

Survived	Drawn	Checked	Approved
	AC	BmcC	-

**File Name and Directory:**  
H:\CAPITAL HOUSING DESIGN TEAM1-Capital Schemes\107c 59 Connaught SDR\DRAWING\3. Part 8-Planning1 REVIT Model.rvt



1 North West 3D - Proposed



2 South West 3D - Proposed

**PART 8**

Revision Schedule

Rev No.	Rev Description	Rev Date	Issued by	Issued to
1	PLANNING SUBMISSION	08/12/23	WCC	

# Housing for All

A new Housing Plan for Ireland



**WESTMEATH COUNTY COUNCIL**  
Comhairle Chontae na hIarmhí

**WESTMEATH HOUSING DESIGN TEAM**  
CIVIC CENTRE, CHURCH ST, ATHLONE, N37 P2T5  
Phone: 09064 42100  
Web: www.westmeathcoco.ie

**PROJECT:**  
59 CONNAUGHT STREET, ATHLONE

**TITLE:**  
3D Visuals

**Scale:** @ A1      **Datum:** MALIN      **Date:** 05/15/23

**Drawing No:** 107c\_03\_006      **Stage:** PLANNING      **Revision:**

Surveved	Drawn	Checked	Approved
AC	BmcC	-	-

**File Name and Directory:**  
H:\CAPITAL HOUSING DESIGN TEAM1-Capital Schemes\107c 59 Connaught SDR\DRAWING03\_Part 8 -Planning1 REV17\Model.rvt