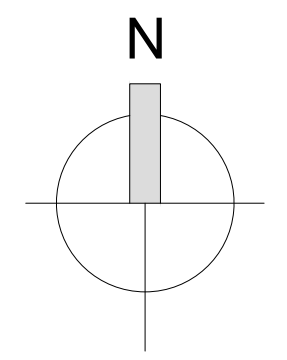


Area



*Canal  
And  
Banks*

SITE LOCATION MAP

1:1000 @ A3

CYAL50334397

© National Mapping Division of Tailte Éireann.

REV.	DESCRIPTION.	DATE.	BY.

**HOUSING CAPITAL**  
 WESTMEATH COUNTY COUNCIL  
 CIVIC CENTRE, CHURCH ST.  
 ATHLONE, N37 P2T5  
 Phone: 0906442100  
 Web: www.westmeathcoco.ie

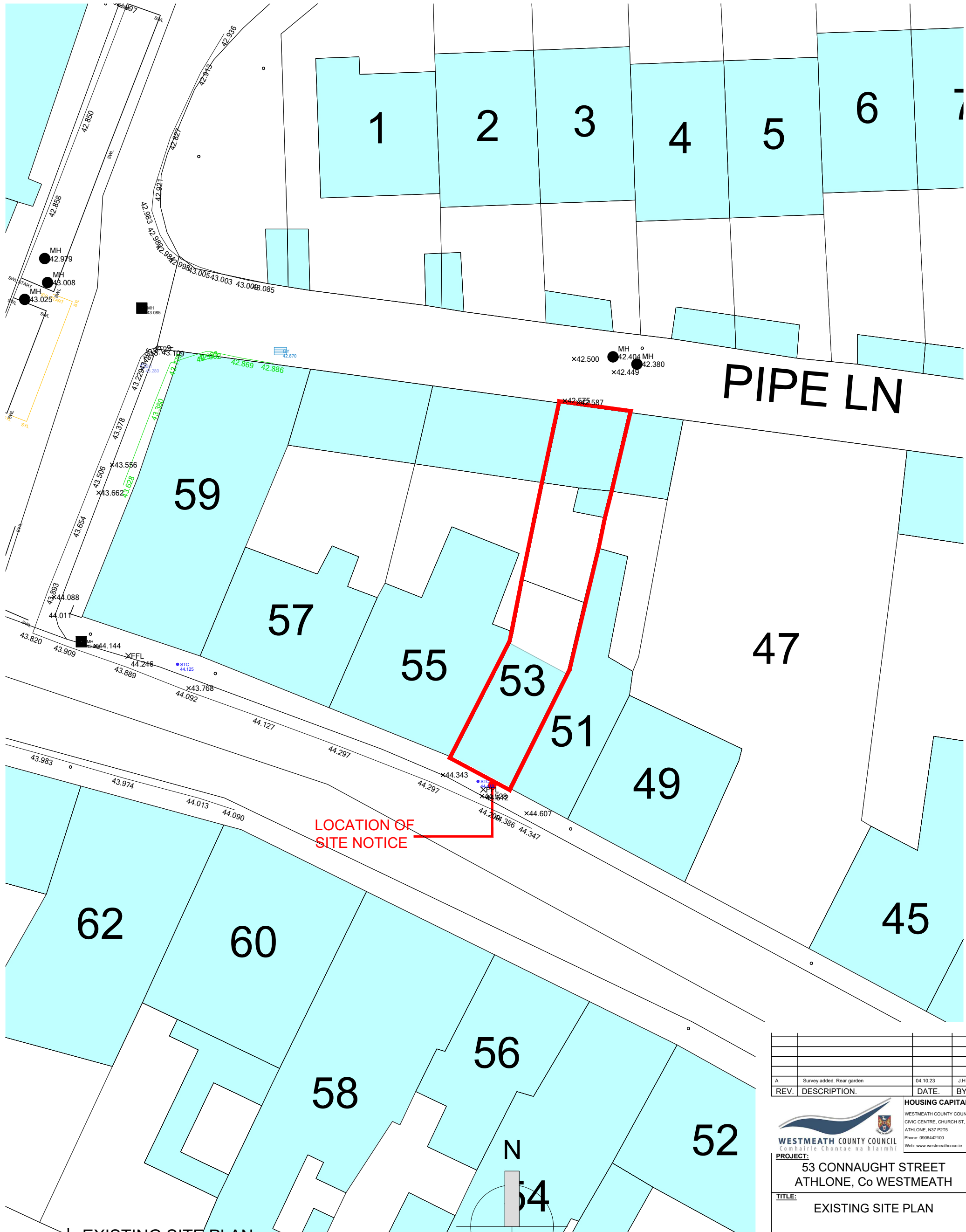
**PROJECT:**  
**53 CONNAUGHT STREET  
 ATHLONE, Co WESTMEATH**

**TITLE:**  
**SITE LOCATION MAP**

Scale: 1:1000@A3	Datum: ITM	Date: AUG '23
Drawing No. 107b_001	Stage 179A	Revision
Surveyed	Drawn	Checked
JH	PWC	PH
Approved	PH	

**SECTION 179A**

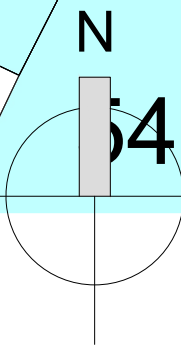
FILE NAME AND DIRECTORY:  
 Site Location Plan\_A.dwg  
 G:\CAPITAL HOUSING DESIGN\TEAM1-Capital Schemes\107b 53 Connaught St\DRAWINGS\3. Part  
 B-Planning\2. DWG\10000 Site drawings



LOCATION OF SITE NOTICE

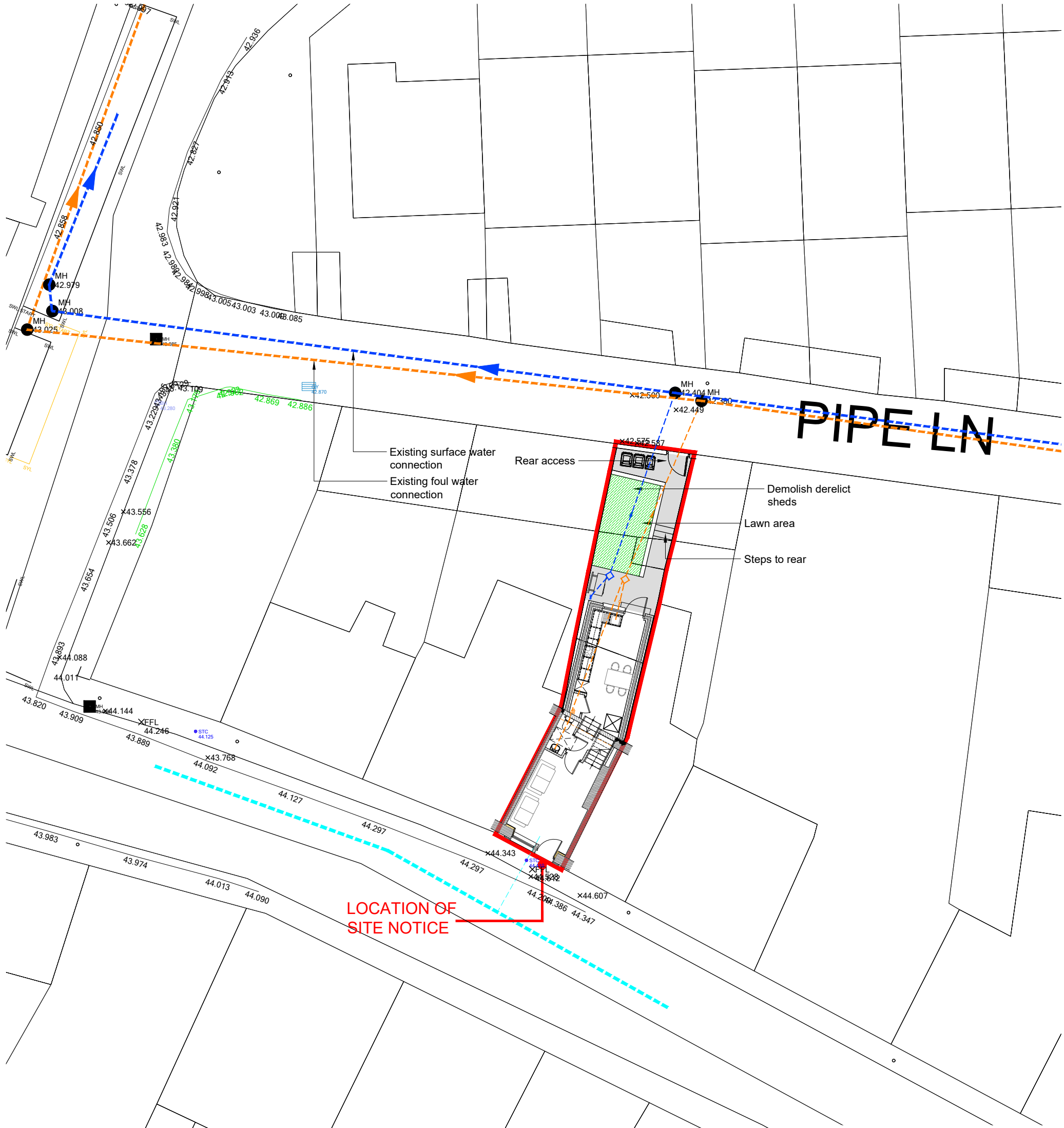
PIPE LN

EXISTING SITE PLAN  
1:200 @ A3



SECTION 179A

A	Survey added. Rear garden	04.10.23	J.H
REV.	DESCRIPTION.	DATE.	BY.
 <b>HOUSING CAPITAL</b> WESTMEATH COUNTY COUNCIL CIVIC CENTRE, CHURCH ST. ATHLONE, N37 P2T5 Phone: 0906442100 Web: www.westmeathcoco.ie			
<b>PROJECT:</b> 53 CONNAUGHT STREET ATHLONE, Co WESTMEATH			
<b>TITLE:</b> EXISTING SITE PLAN			
<b>Scale:</b> 1:200@A3	<b>Datum:</b>	<b>Date:</b> AUG '23	
<b>Drawing No.</b> 107b_002	<b>Stage</b> 179A	<b>Revision</b> A	
Surveyed	Drawn	Checked	Approved
	J.H	P.W.C.	P.H
<b>FILE NAME AND DIRECTORY:</b> Site Location Plan_A.dwg G:\CAPITAL HOUSING DESIGN TEAM\1-Capital Schemes\107b 53 Connaught St\DRAWINGS\3. Part 8 - Planning\2. DWG\10000 Site drawings			

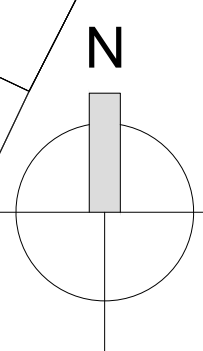


**PIPE LN**

**LOCATION OF SITE NOTICE**

**PROPOSED SITE PLAN**  
1:200 @ A3

CYAL50334397  
© National Mapping Division of Tailte Éireann.



**SECTION 179A**

REV.	DESCRIPTION.	DATE.	BY.
A	Survey added. Rear garden	04.10.23	J.H

**HOUSING CAPITAL**  
WESTMEATH COUNTY COUNCIL  
CIVIC CENTRE, CHURCH ST.  
ATHLONE, N37 P2T5  
Phone: 0906442100  
Web: www.westmeathcoco.ie

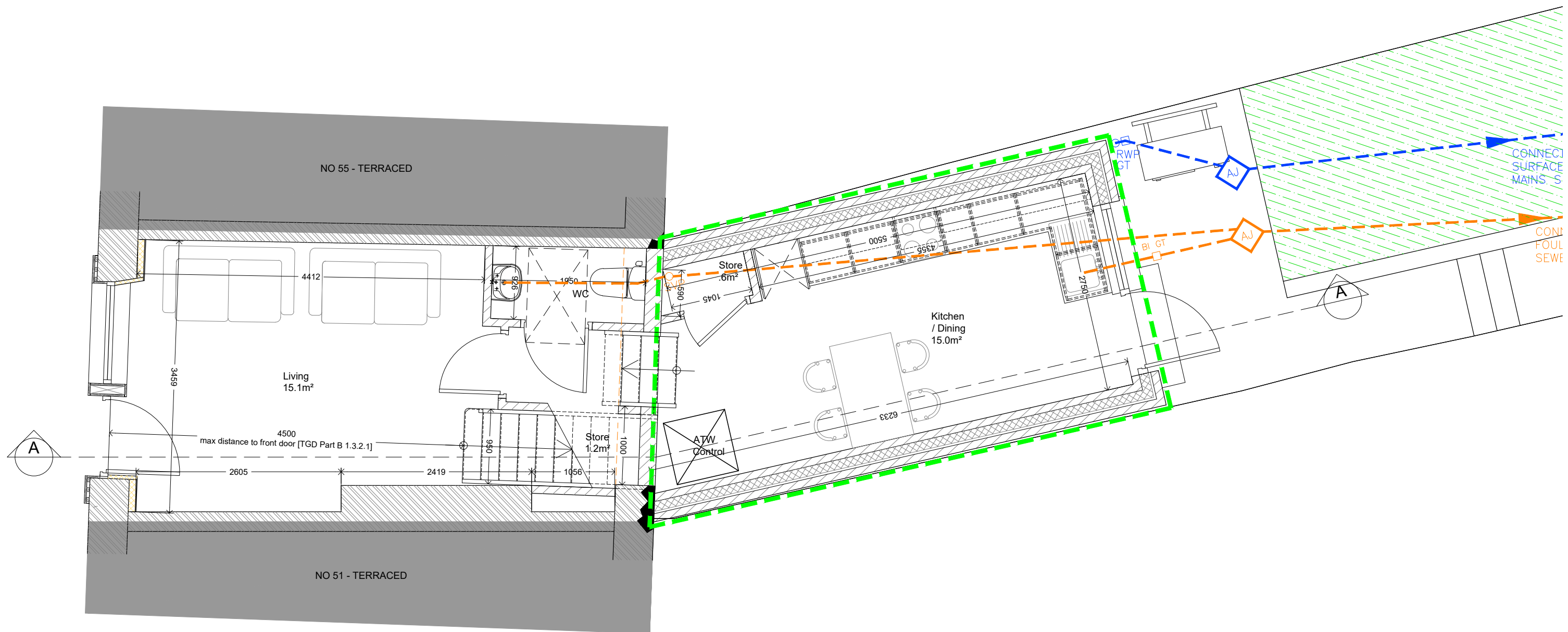
**PROJECT:**  
**53 CONNAUGHT STREET**  
**ATHLONE, Co WESTMEATH**

**TITLE:**  
**PROPOSED SITE PLAN**

<b>Scale:</b> 1:200@A3	<b>Datum:</b>	<b>Date:</b> AUG '23
<b>Drawing No.</b> 107b_003	<b>Stage</b> 179A	<b>Revision</b> A
Surveyed	Drawn	Checked
	J.H	P.W.C.
		Approved
		P.H

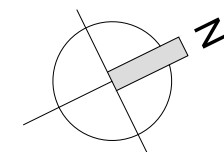
**FILE NAME AND DIRECTORY:**  
Site Location Plan\_A.dwg  
G:\CAPITAL HOUSING DESIGN TEAM\1-Capital Schemes\107b 53 Connaught St\DRAWINGS\3. Part 8 - Planning\2. DWG's\1000 Site drawings





GROUND FLOOR PLAN  
1:50 @ A3

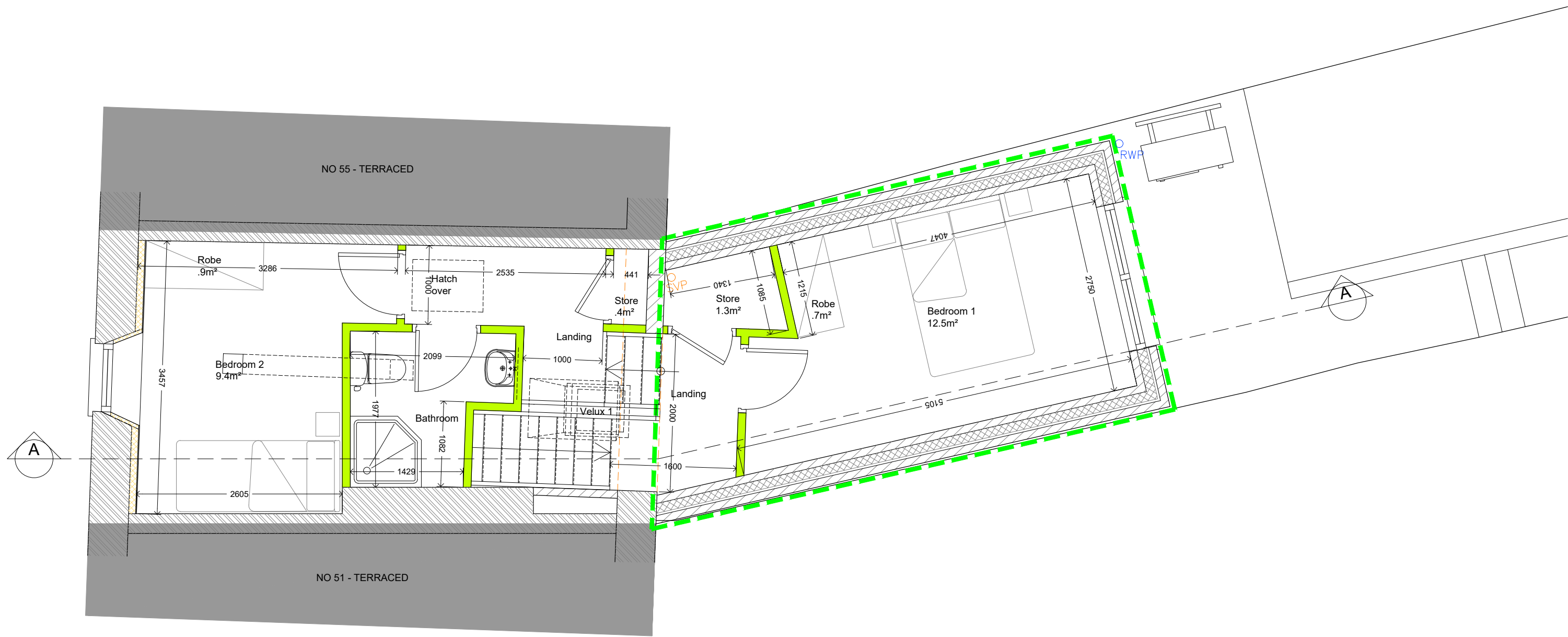
- LEGEND**
- • Demolish
  - • New Build



SECTION 179A

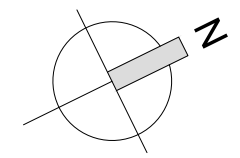
TABLE - SPACE PROVISION AND ROOM SIZES FOR TYPICAL DWELLINGS						
Areas in accordance with Design Manual for Quality Housing, DOEHLG 2022						
Apartment Block 1	TARGET GROSS FLOOR AREA (m <sup>2</sup> )	LIVING AREA (m <sup>2</sup> )	AGGREGATE LIVING AREA (m <sup>2</sup> )	AGGREGATE BEDROOM AREA (m <sup>2</sup> )	STORAGE (m <sup>2</sup> )	Private Amenity Space (m <sup>2</sup> )
<b>2 Bed: 3 person house</b>						
2 STOREY	71.0m <sup>2</sup>	15.1m <sup>2</sup>	30.2m <sup>2</sup>	21.9m <sup>2</sup>	4.8m <sup>2</sup> [excluded kitchen cabinets]	Rear Garden Access
	70.0m <sup>2</sup> (70m <sup>2</sup> + 10% = 77m <sup>2</sup> )	13.0m <sup>2</sup>	30.0m <sup>2</sup>	20.0m <sup>2</sup>	3.0m <sup>2</sup>	7.0m <sup>2</sup>

<p><b>WESTMEATH COUNTY COUNCIL</b> Comhairle Chontae na hIarmhí</p> <p><b>PROJECT:</b> 53 CONNAUGHT STREET ATHLONE, Co WESTMEATH</p> <p><b>TITLE:</b> PROPOSED GROUND FLOOR PLAN</p>	<p><b>HOUSING CAPITAL</b> WESTMEATH COUNTY COUNCIL CIVIC CENTRE, CHURCH ST. ATHLONE, N37 P2T5 Phone: 0906442100 Web: www.westmeathcoco.ie</p> <p>Scale: 1:50@A3    Datum: ITM    Date: AUG '23</p> <p>Drawing No. 107b_101    Stage 179A    Revision A</p> <table border="1" style="width: 100%; text-align: center;"> <tr> <td>Surveyed</td> <td>Drawn</td> <td>Checked</td> <td>Approved</td> </tr> <tr> <td></td> <td>JH</td> <td>PMC</td> <td>PH</td> </tr> </table> <p><small>FILE NAME AND DIRECTORY: 53_FINAL_FULL_B.dwg G:\CAPITAL HOUSING DESIGN TEAM1-Capital Schemes\107b 53 Connaught St\DRAWINGS\3. Part 8 -Planning\2_DWG\1000 General Arrangement</small></p>	Surveyed	Drawn	Checked	Approved		JH	PMC	PH
Surveyed	Drawn	Checked	Approved						
	JH	PMC	PH						



FIRST FLOOR PLAN  
1:50 @ A3

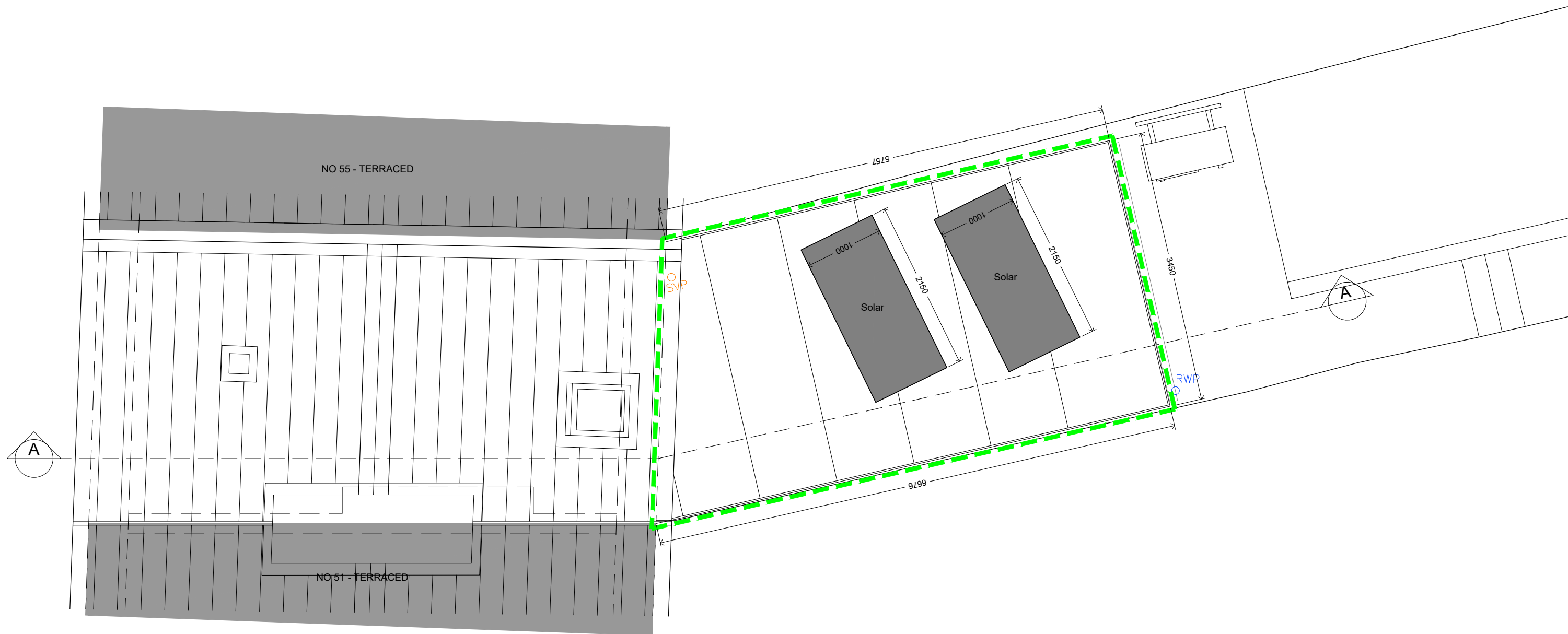
- LEGEND**
- - - • Demolish
  - - - • New Build



SECTION 179A

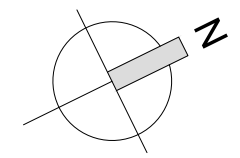
Apartment Block 1		TARGET GROSS FLOOR AREA (m <sup>2</sup> )	LIVING AREA (m <sup>2</sup> )	AGGREGATE LIVING AREA (m <sup>2</sup> )	AGGREGATE BEDROOM AREA (m <sup>2</sup> )	STORAGE (m <sup>2</sup> )	Private Amenity Space (m <sup>2</sup> )
<b>2 Bed: 3 person house</b>							
2 STOREY		71.0m <sup>2</sup>	15.1m <sup>2</sup>	30.2m <sup>2</sup>	21.9m <sup>2</sup>	4.8m <sup>2</sup> [excluded kitchen cabinets]	Rear Garden Access
		70.0m <sup>2</sup> (70m <sup>2</sup> + 10% = 77m <sup>2</sup> )	13.0m <sup>2</sup>	30.0m <sup>2</sup>	20.0m <sup>2</sup>	3.0m <sup>2</sup>	7.0m <sup>2</sup>

<p><b>WESTMEATH COUNTY COUNCIL</b> Comhairle Chontae na hIarmhí</p> <p><b>PROJECT:</b> 53 CONNAUGHT STREET ATHLONE, Co WESTMEATH</p> <p><b>TITLE:</b> PROPOSED FIRST FLOOR PLAN</p>	<p><b>HOUSING CAPITAL</b> WESTMEATH COUNTY COUNCIL CIVIC CENTRE, CHURCH ST. ATHLONE, N37 P2T5 Phone: 0906442100 Web: www.westmeathcoco.ie</p> <p>Scale: 1:50@A3    Datum: ITM    Date: AUG '23</p> <p>Drawing No. 107b_102    Stage 179A    Revision A</p> <table border="1" style="width: 100%; text-align: center;"> <tr> <td>Surveyed</td> <td>Drawn</td> <td>Checked</td> <td>Approved</td> </tr> <tr> <td></td> <td>JH</td> <td>PWC</td> <td>PH</td> </tr> </table> <p>FILE NAME AND DIRECTORY: 53_FINAL_FULL_B.dwg G:\CAPITAL HOUSING DESIGN TEAM1-Capital Schemes\107b 53 Connaught St\DRAWINGS\3. Part 8 -Planning\2. DWG\1000 General Arrangement</p>	Surveyed	Drawn	Checked	Approved		JH	PWC	PH
Surveyed	Drawn	Checked	Approved						
	JH	PWC	PH						



FIRST FLOOR PLAN  
1:50 @ A3

- LEGEND**
- - - - • Demolish
  - - - - • New Build



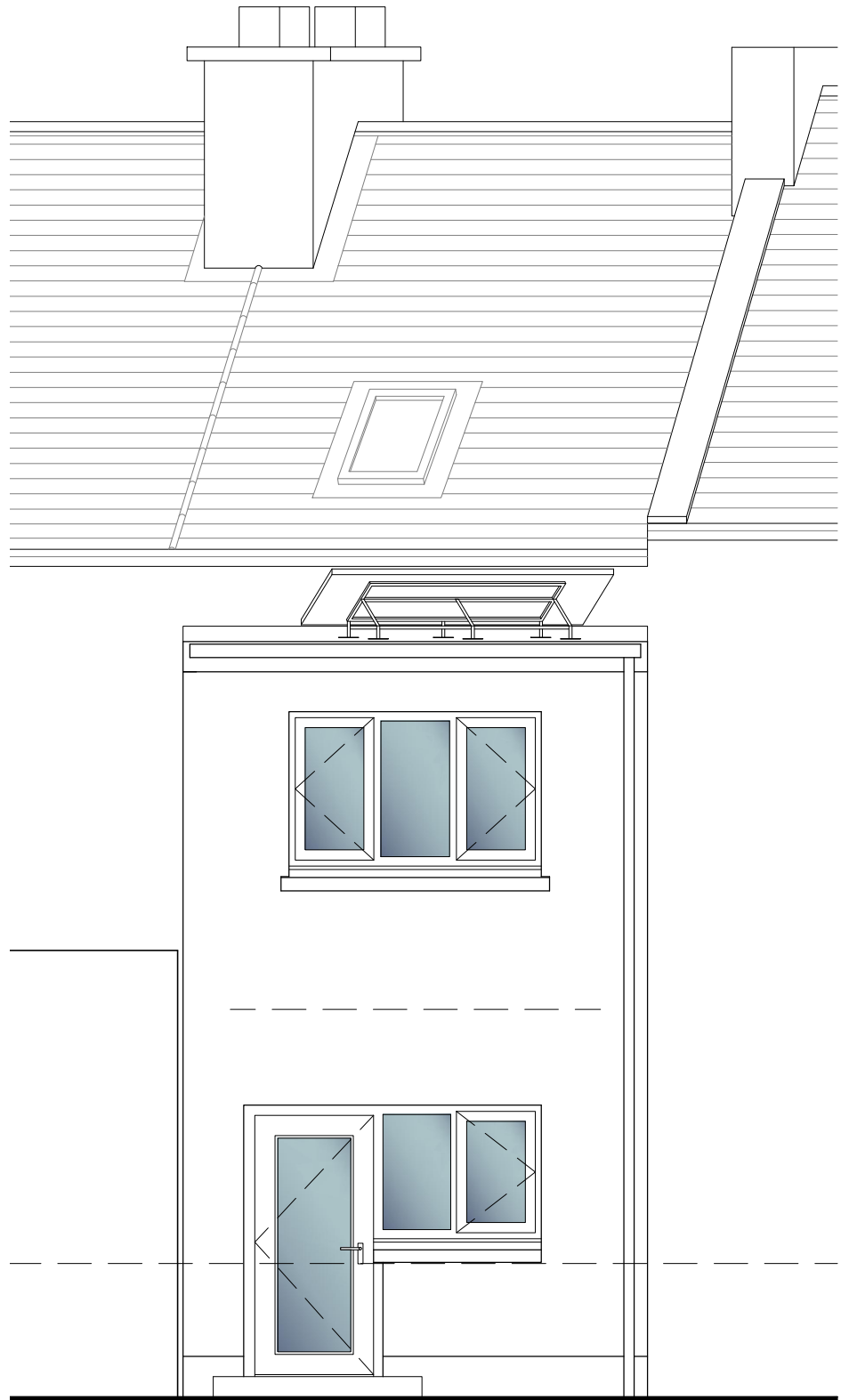
SECTION 179A

TABLE - SPACE PROVISION AND ROOM SIZES FOR TYPICAL DWELLINGS						
Areas in accordance with Design Manual for Quality Housing, DOEHLG 2022						
Apartment Block 1	TARGET GROSS FLOOR AREA (m <sup>2</sup> )	LIVING AREA (m <sup>2</sup> )	AGGREGATE LIVING AREA (m <sup>2</sup> )	AGGREGATE BEDROOM AREA (m <sup>2</sup> )	STORAGE (m <sup>2</sup> )	Private Amenity Space (m <sup>2</sup> )
<b>2 Bed: 3 person house</b>						
2 STOREY	71.0m <sup>2</sup>	15.1m <sup>2</sup>	30.2m <sup>2</sup>	21.9m <sup>2</sup>	4.8m <sup>2</sup> [excluded kitchen cabinets]	Rear Garden Access
	70.0m <sup>2</sup> (70m <sup>2</sup> + 10% = 77m <sup>2</sup> )	13.0m <sup>2</sup>	30.0m <sup>2</sup>	20.0m <sup>2</sup>	3.0m <sup>2</sup>	7.0m <sup>2</sup>

A	Extension lowered by 2 steps
REV.	DESCRIPTION.
DATE.	BY.
	04.10.23 J.H
<b>HOUSING CAPITAL</b> WESTMEATH COUNTY COUNCIL CIVIC CENTRE, CHURCH ST. ATHLONE, N37 P2T5 Phone: 0906442100 Web: www.westmeathcoco.ie	
<b>PROJECT:</b> <b>53 CONNAUGHT STREET</b> <b>ATHLONE, Co WESTMEATH</b>	
<b>TITLE:</b> <b>PROPOSED ROOF PLAN</b>	
Scale: 1:50@A3	Datum: ITM
Date: AUG '23	
Drawing No. 107b_103	Stage 179A
Surveyed	Revision A
Drawn JH	
Checked PWC	
Approved PH	
FILE NAME AND DIRECTORY: 53_FINAL_FULL_B.dwg G:\CAPITAL HOUSING DESIGN TEAM1-Capital Schemes\107b 53 Connaught St\DRAWINGS\3. Part 8 - Planning\2. DWG\1000 General Arrangement	



FRONT ELEVATION  
1:100 @ A3



REAR ELEVATION  
1:100 @ A3

SECTION 179A

REV.	DESCRIPTION	DATE	BY.
A	Extension lowered by 2 steps	04.10.23	J.H

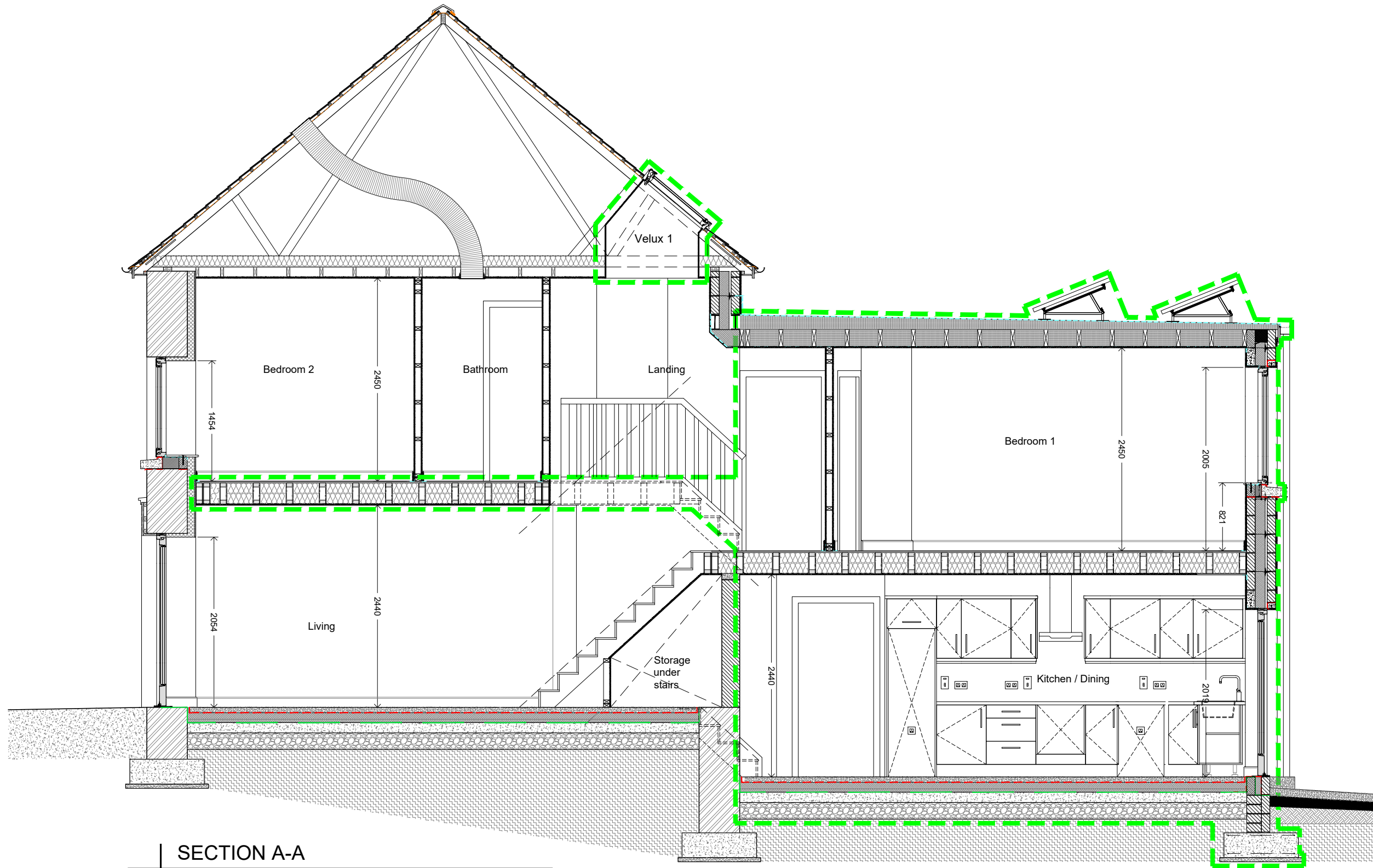


PROJECT:  
53 CONNAUGHT STREET  
ATHLONE, Co WESTMEATH

TITLE:  
PROPOSED FRONT &  
REAR ELEVATIONS

Scale:	1:100@A3	Datum:	ITM	Date:	AUG '23
Drawing No.	107b_200	Stage	179A	Revision	A
Surveyed	Drawn	Checked	Approved		
	JH	PMC	PH		

FILE NAME AND DIRECTORY:  
53\_FINAL\_FULL\_B.dwg  
G:\CAPITAL HOUSING DESIGN TEAM\1-Capital Schemes\107b 53 Connaught SKDRAWINGS\3. Part  
8 -Flooring\2. DWG\107b\_200 General Arrangement



SECTION A-A  
1:100 @ A3

LEGEND

- - - - - • New Build

SECTION 179A

REV.	DESCRIPTION	DATE	BY.
A	Extension lowered by 2 steps	04.10.23	J.H

**HOUSING CAPITAL**  
 WESTMEATH COUNTY COUNCIL  
 CIVIC CENTRE, CHURCH ST.  
 ATHLONE, N37 P2T5  
 Phone: 0906442100  
 Web: www.westmeathcoco.ie

**PROJECT:**  
 53 CONNAUGHT STREET  
 ATHLONE, Co WESTMEATH

**TITLE:**  
 PROPOSED SECTION A-A

<b>Scale:</b> 1:100@A3	<b>Datum:</b> ITM	<b>Date:</b> AUG '23
<b>Drawing No.</b> 107b_201	<b>Stage</b> 179A	<b>Revision</b> A
Surveyed J.H	Drawn P.M.C	Checked P.H
Approved		

**FILE NAME AND DIRECTORY:**  
 53\_FINAL\_FULL\_B.dwg  
 G:\CAPITAL HOUSING DESIGN TEAM\1-Capital Schemes\107b 53 Connaught STRDRAWINGS\3. Part 8 -Flooring2. DWG\1000 General Arrangement