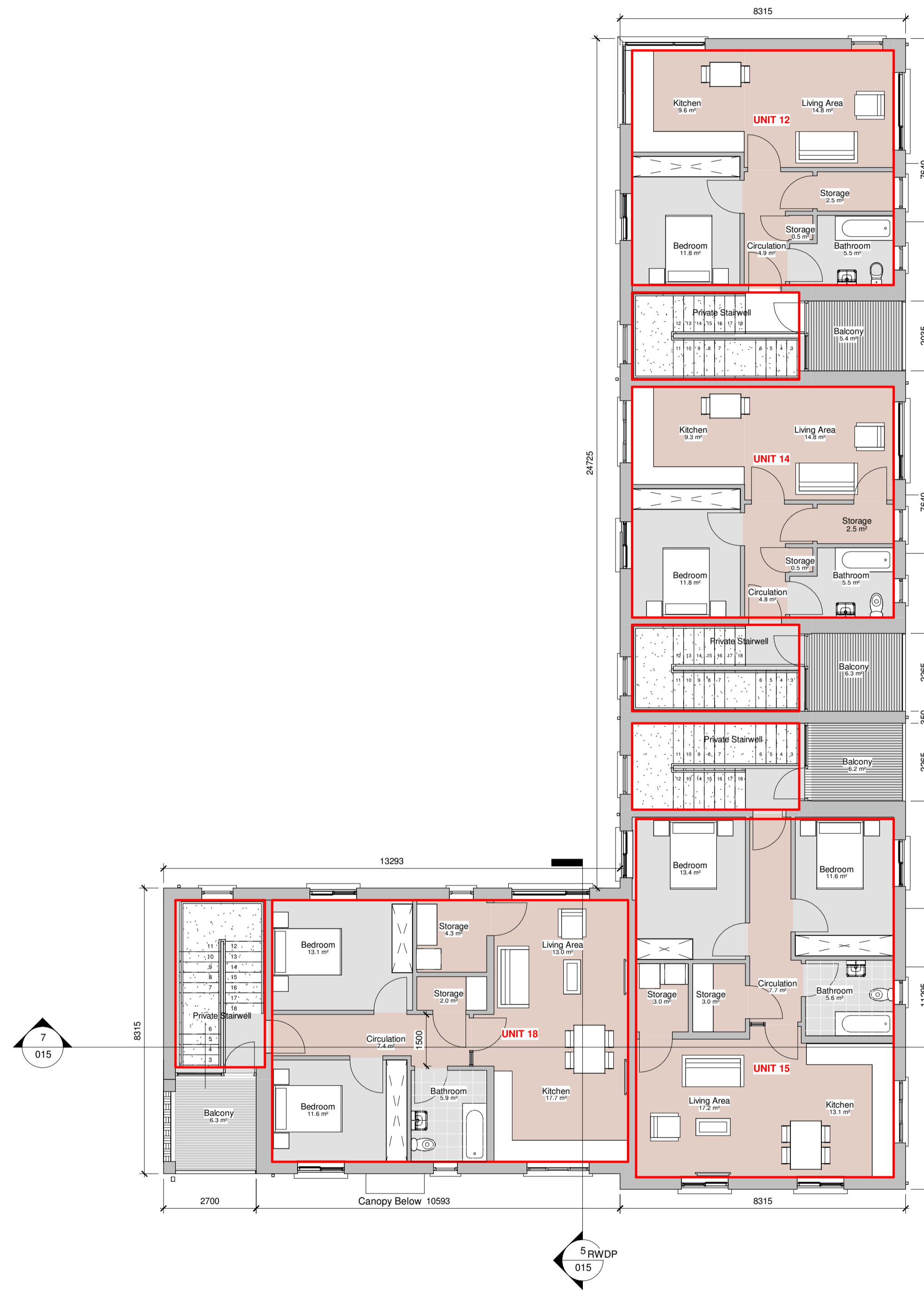


1 Ground Floor Level
1 : 100



2 First Floor Level
1 : 100

PART 8 - PLANNING
NOT FOR CONSTRUCTION

Revision Schedule				
Rev No.	Rev Description	Rev Date	Issued by	Issued to
A	Block 2 area reduced	07/10/2021	WCC	Consultant

Rebuilding Ireland
Action Plan for Housing and Homelessness

Funded by the Irish Government under Rebuilding Ireland, Action Plan for Housing and Homelessness.

WESTMEATH HOUSING DESIGN TEAM
WESTMEATH COUNTY COUNCIL,
CIVIC CENTRE, CHURCH ST.,
ATHLONE, N37 P2T5
Phone: 05664 42100
Web: www.westmeathcoco.ie

PROJECT:
CONSTRUCTION OF 22 DWELLING
UNITS AT ST. BRIGIDS GREEN,
MULLINGAR, CO. WESTMEATH

TITLE:
APARTMENT BLOCK
PLANS

Scale: 1 : 100 **Datum:** MALIN **Date:** 09/03/20
@ A1

Drawing No: 113_03_014	Stage: Part 8	Revision: A
----------------------------------	-------------------------	-----------------------

Surveved MK	Drawn AC	Checked PH/TOH	Approved PH
-----------------------	--------------------	--------------------------	-----------------------

File Name and Directory:
H:\CAPITAL HOUSING DESIGN TEAM\111-07 Grounway Terrace Drawings\Part 8\Housing Apartment Block_Part 8.rvt