

**LANDSCAPE LEGEND**

Note: All landscaping to be completed during the first planting season after the proposed dwelling has been occupied.

**TREE LEGEND**

Type 1:

Equal mix: 12-14cm girth minimum.  
Individual tree pits to be surrounded with Terebinth Spira circular sets on concrete areas.  
All trees to be secured with double stake and cross bar.  
ACER PATAVODICES DEBORAH MAPLE  
BETULA PENDULA BIRCH  
FRAXINUS EXCELSOR ASH  
QUERCUS ROBUR FASTIGATA PENUNCIATE OAK  
SALIX ALBA TRISTIS WILLOW  
SAMBUCUS NIGRA CRAB APPLE

Note: 1000mm x 1000mm min of topsoil to be placed under Trees.

Type 2:

Rowan (Mountain ash) Sorbus aucuparia 3 metre tall root-balled trees.  
Note: 1000mm x 1000mm min of topsoil to be placed under Trees.

Type 3:

Proposed Native species copper beech hedgerow in double staggered row at 2 per m<sup>2</sup>

150mm min depth of Topsoil to be imported, Graded and seeded grass

**PAVING**

Paving Blocks 1:

100x100x50mm Concrete Paving setts to house entrances and pedestrian crossings (silver with edge and boundaries in graphite bands) Textured granite aggregate. Extremely low skid/slip resistance. Strength > 3.6 MPa.

Paving Blocks 2:  
600x150x60mm Plain (linear) Paving blocks Silver with 20% graphite mix to BS EN 1338:2003 to open space.

Paving Blocks 3:  
TURFSTONE PAVING TO CARPARK  
600 x 400 x 80mm Units

100mm bedding sand, Compacted Aggregate sub-base and Geotextile layer installed in accordance with manufacturers details

255 x 125 x 915mm Kerbing blocks with exposed granular granite effect surface to all paths and junction between green area, parking and tarmac/adam. kerbs laid flat at dished accessible parking space area.

Existing road to be resurfaced

New road to Engineers specifications.

New Concrete Footpath to Engineers specifications.

Tactile paving profile at all dished crossing points

Contrasting colour at ramp to comply with BS 8300:2009 Annex B or BS8493:2008.

Thermoplastic road markings to indicate clear area

Selected Silver/Graphite mix Permeable Paving suitable for heavy vehicular traffic turning for shared surface area entrances and pedestrian crossings (silver with edge and boundaries in graphite bands) Textured granite aggregate. Extremely low skid/slip resistance. Strength > 3.6 MPa.

Proposed Low maintenance wild long grass mix with TERRAM Weedguard base layer and bark mulch top layer  
Stipa Arundinacea (New Zealand wind grass)  
Stipa Tenissima (Mexican Feather Grass)  
Stipa Calamagrostis (Spear Grass)  
Allium sphaerocephalon (Drumstick Allium)  
Alliums (Ornamental Onions)

Proposed Box Hedging

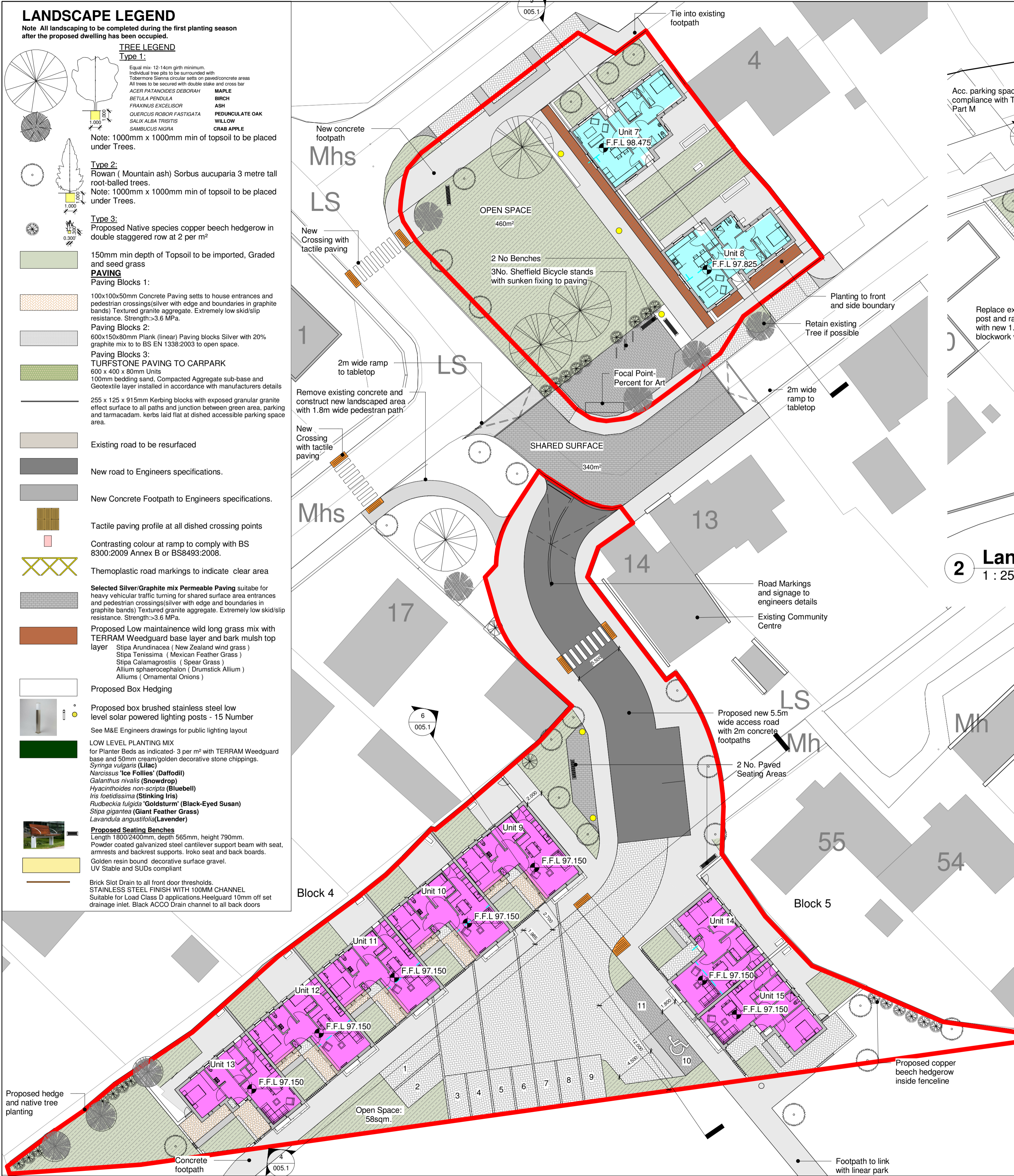
Proposed box brushed stainless steel low level solar powered lighting posts - 15 Number

See M&E Engineers drawings for public lighting layout

LOW LEVEL PLANTING MIX  
for Planter Beds as indicated - 3 per m<sup>2</sup> with TERRAM Weedguard base and 50mm cream/golden decorative stone chippings.  
Syringa vulgaris (Lilac)  
Narcissus 'Ice Follies' (Daffodil)  
Galanthus nivalis (Snowdrop)  
Hyacinthoides non-scripta (Bluebell)  
Iris foetidissima (Stinking Iris)  
Rudbeckia fulgida 'Goldsturm' (Black-Eyed Susan)  
Stipa gigantea (Giant Feather Grass)  
Lavandula angustifolia (Lavender)

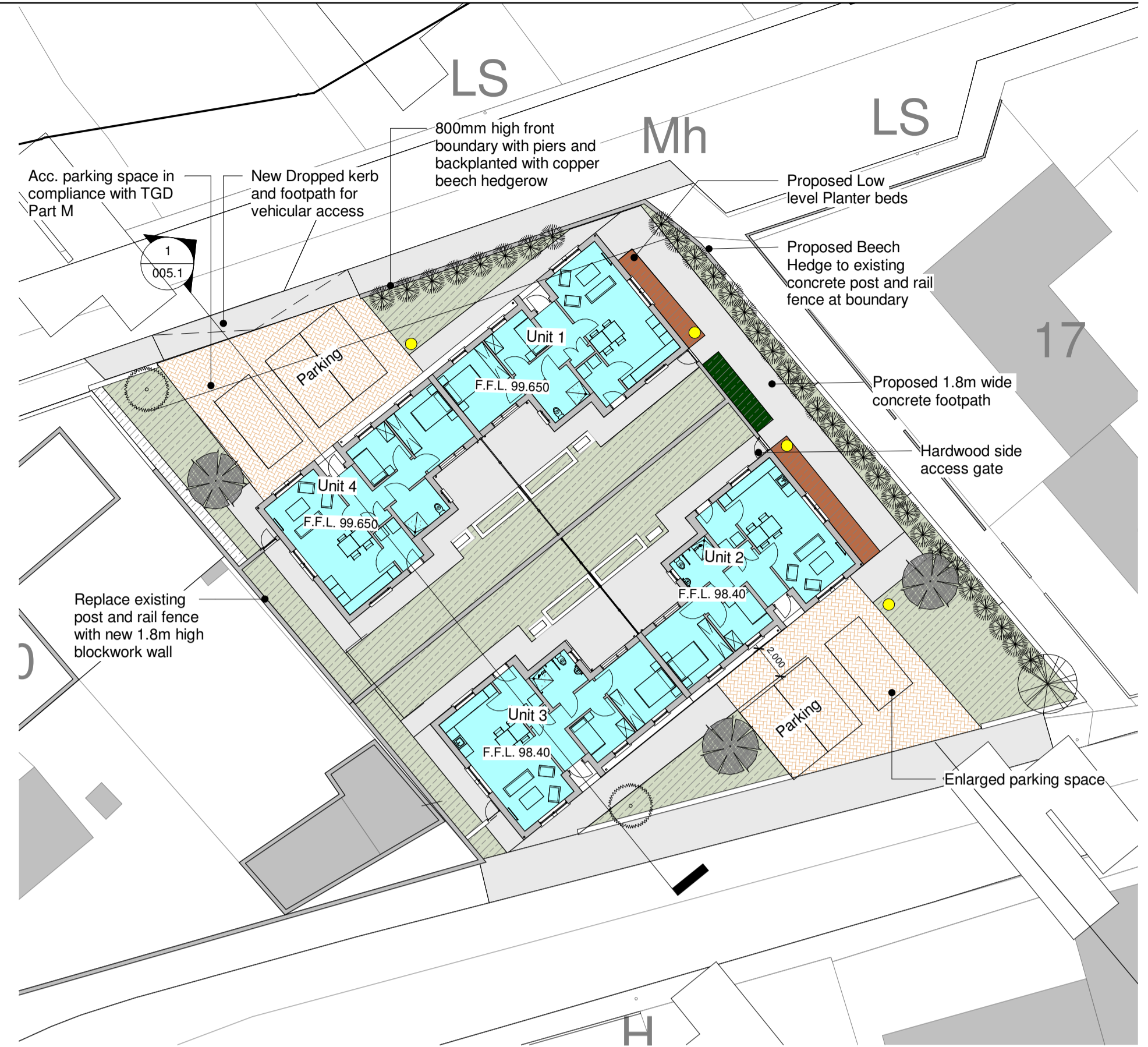
Proposed Seating Benches  
Length 1800/2400mm, depth 565mm, height 790mm.  
Powder coated galvanized steel cantilever support beam with seat, armrests and backrest supports. Iroko seat and back boards.  
Golden resin bound decorative surface gravel.  
UV Stable and SUDs compliant

Brick Slot Drain to all front door thresholds.  
STAINLESS STEEL FINISH WITH 100MM CHANNEL  
Suitable for Load Class D applications. Heelguard 10mm off set drainage inlet. Black ACCO Drain channel to all back doors

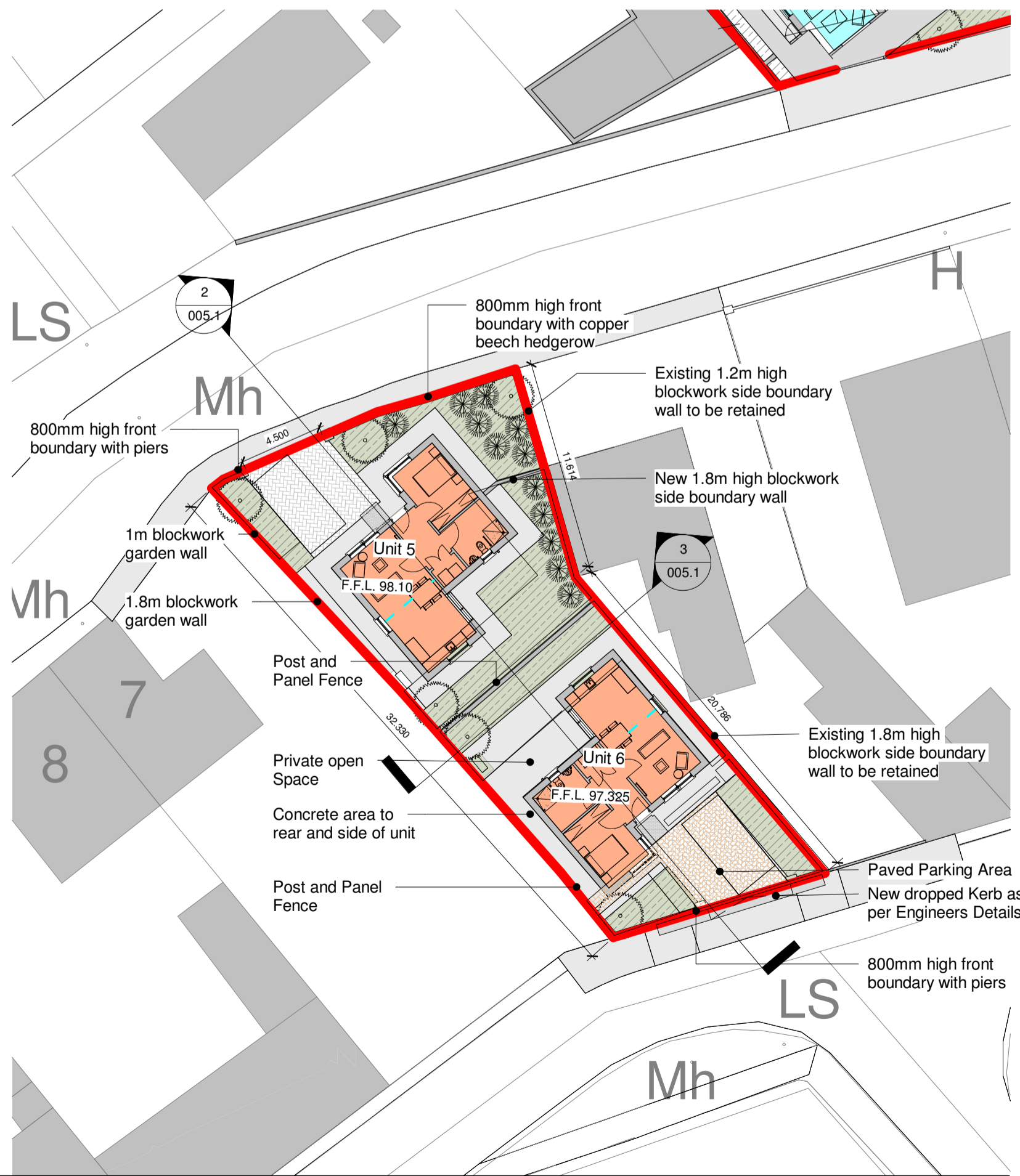


**1 Landscaping Layout Site 1 & 2**  
1 : 250

© Ordnance Survey Ireland/Government of Ireland 2021/OSi\_NMA\_287



**2 Landscaping Layout Site 3**  
1 : 250



**3 Landscaping Layout Site 4**  
1 : 250

**Notes:**

This Drawing is to be read in conjunction with the relevant Floor Plans, Particular Specification.

Refer to Particular & General Specification for Full Specification. Particular Specification takes precedence over General Specification.

Do not scale drawings. Use figured dimensions only.

All dimensions should be surveyed by the Contractor before construction.

Capital Housing Team Architect to be informed of any discrepancies before work proceeds.

All work is to be carried out in compliance with the following:

- The current Building Regulations as issued by the Department of the Environment including all latest updates as issued.
- Compliance with conditions of Planning.
- Recommendations for Site Development Works for Housing Areas DOE/CLG 1998.
- BS 8000: 2011 - Works on Building Sites.
- Guidelines for opening, backfilling and reinstatement of trenches in public roads - DOE/CLG 2002.
- All works to comply with E.T.C.I. Regulations.

All level shown are indicative only. Please refer to Engineers drawings for proposed levels.

**PART 8 CONSULTATION**  
NOT FOR CONSTRUCTION

Revision Schedule				
Rev No.	Rev Description	Rev Date	Issued by	Issued to

Funded by the Irish Government under Rebuilding Ireland, Action Plan for Housing and Homelessness.

**WESTMEATH HOUSING DESIGN TEAM**  
WESTMEATH COUNTY COUNCIL,  
CIVIC CENTRE, CHURCH ST.,  
ATHLONE, N87 P6T5  
Phone: 08664 42100  
Web: www.westmeathcoco.ie

**PROJECT:** PHASE 2 CONSTRUCTION OF DWELLING UNITS AT ENNELL COURT, MULLINGAR, CO. WESTMEATH

**TITLE:** LANDSCAPING LAYOUT

Scale: 1 : 250 Datum: MALIN Date: 01/04/22 @ A1

Drawing No:	Stage:	Revision
115_03_011	PART 8	

Surveilled	Drawn	Checked	Approved
MK/LN	AF/MK	BC	PH

File Name and Directory:  
H:\CAPITAL HOUSING DESIGN TEAM\115-Ennell Court Phase 2\Drawings\03\_Part 8@Ennell Court\_Phase 2\_Site 1.dwg