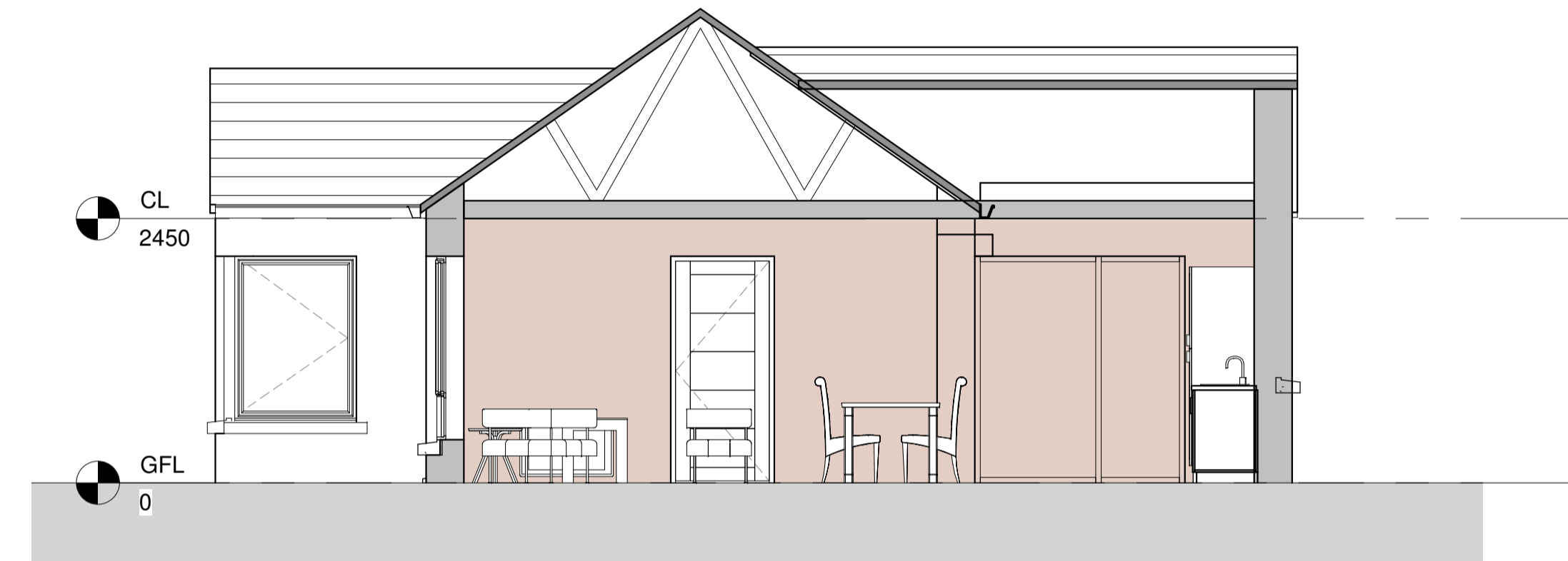
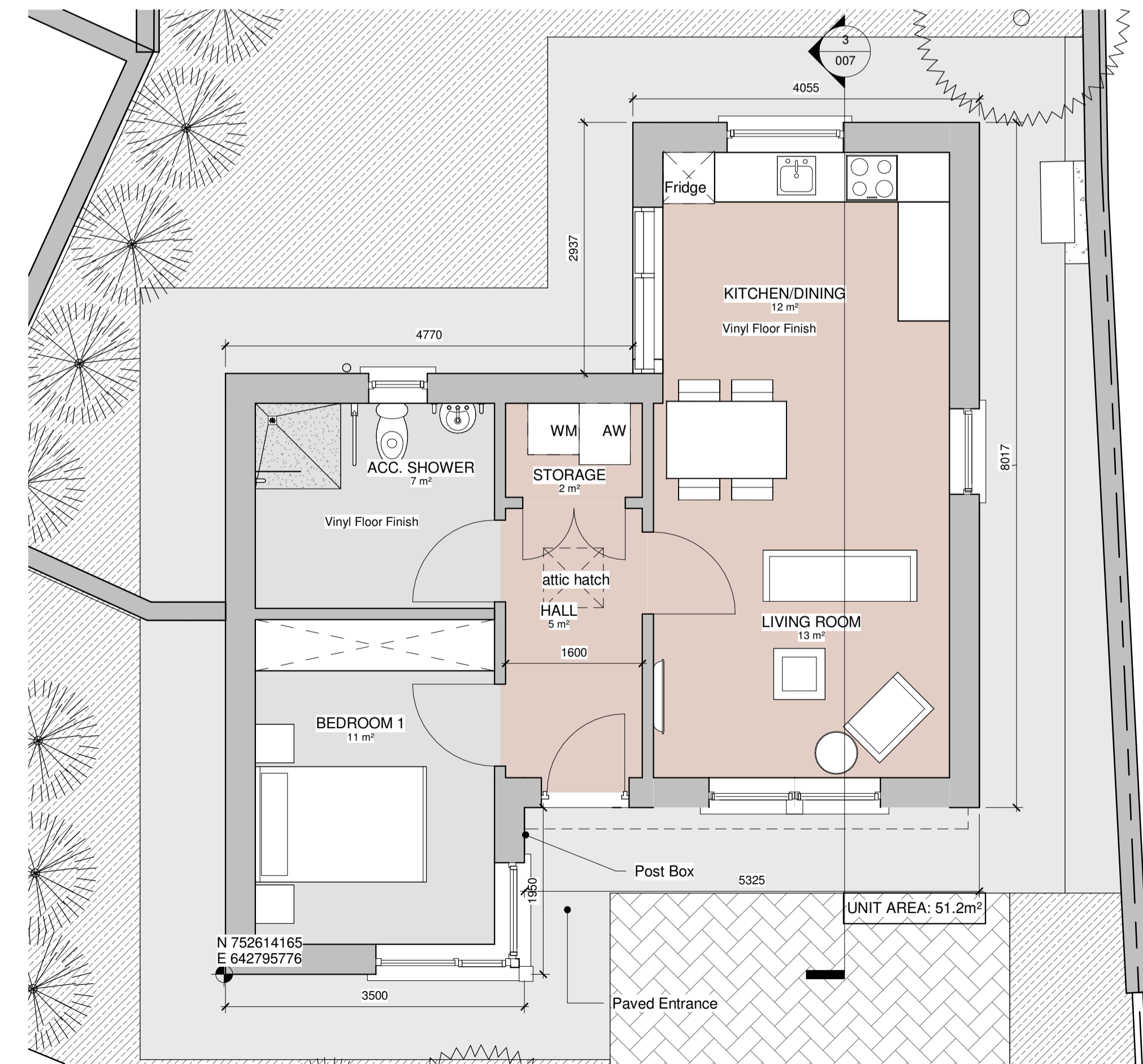




2 Front Elevation



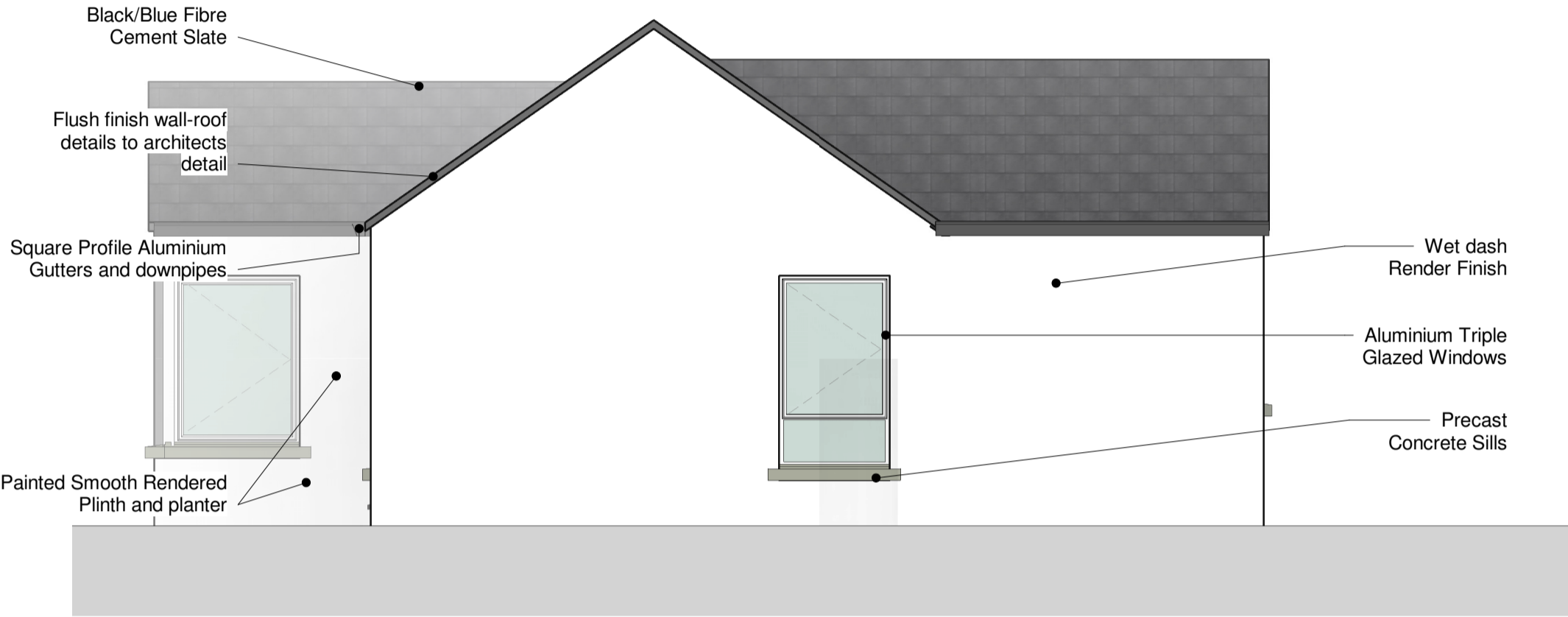
3 Section 2



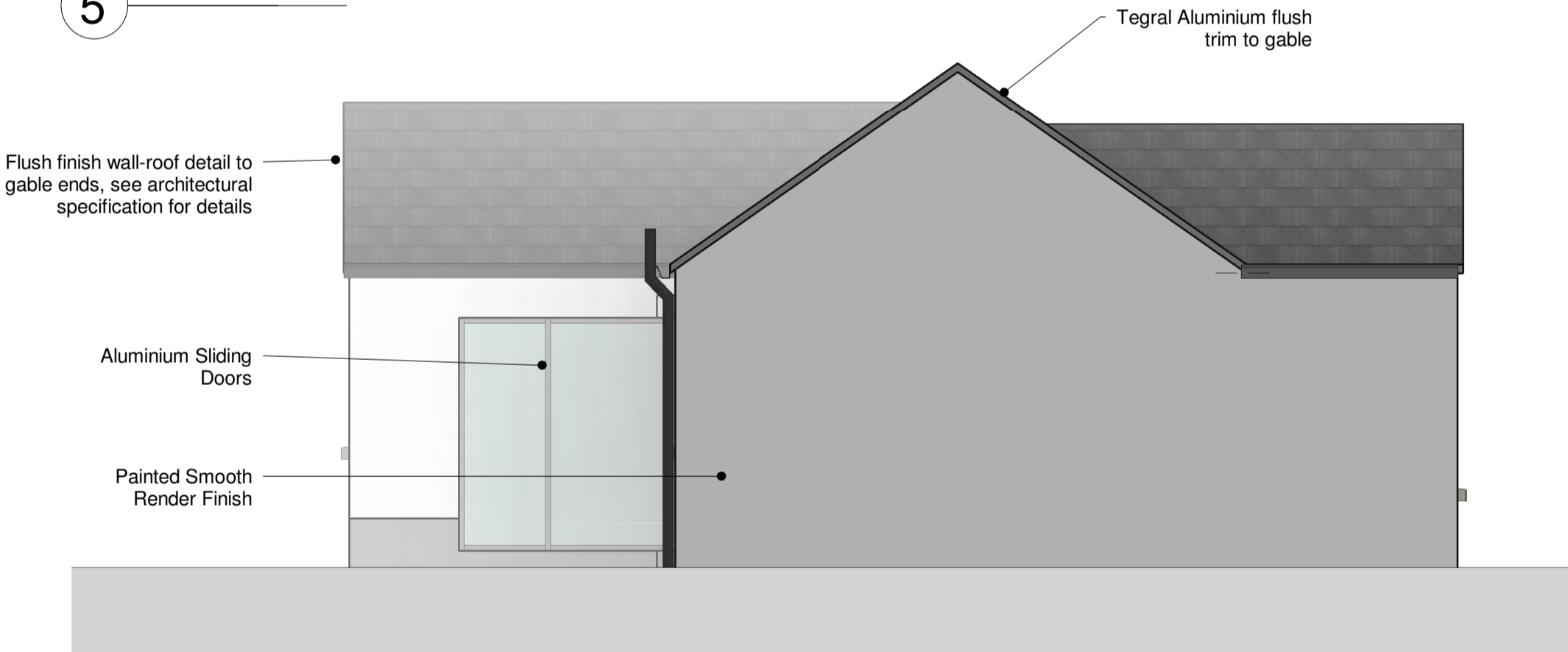
1 Ground Floor Level



4 Rear Elevation



5 Side Elevation



6 Side Elevation 2



7 3D View

AREA SCHEDULE		
1 BED, 2 PERSON (1 STOREY)	REQUIRED MIN AREA (m ²)	PROPOSED AREA (m ²)
GROSS FLOOR AREA (m ²)	44m ²	51m ²
MINIMUM LIVING ROOM AREA (m ²)	11m ²	13m ²
AGGREGATE LIVING AREA (m ²)	23m ²	25m ²
BEDROOM 1 AREA (m ²)	11m ²	11m ²
AGGREGATE BEDROOM (m ²)	11m ²	11m ²
STORAGE (m ²)	2m ²	2m ²

House designed in accordance with Quality Housing for Sustainable Communities DOE/HLG 2007

PART 8 CONSULTATION
NOT FOR CONSTRUCTION

Revision Schedule

Rev No.	Rev Description	Rev Date	Issued by	Issued to

Rebuilding Ireland
Action Plan for Housing and Homelessness

Funded by the Irish Government under Rebuilding Ireland, Action Plan for Housing and Homelessness.

WESTMEATH HOUSING DESIGN TEAM
WESTMEATH COUNTY COUNCIL,
CIVIC CENTRE, CHURCH ST.,
ATHLONE, N37 P2T5
Phone: 05064 42100
Web: www.westmeathcoco.ie

PROJECT:
PHASE 2 CONSTRUCTION OF DWELLING UNITS AT ENNELL COURT, MULLINGAR, CO. WESTMEATH

TITLE:
UNIT TYPE 2
PLAN, ELEVATIONS & SECTION

Scale: 1:100 @ A3 Datum: MALIN Date: 07/04/22

Drawing No: 115_03_007 Stage: PART 8 Revision:

Surveved	Drawn	Checked	Approved
LN	AF/MK	BC	PH

File Name and Directory:
H:\CAPITAL HOUSING DESIGN TEAM\Capital Schemes\115-Ennell Court Phase 2\Drawings\03_Part 8\House\115_03_007_Unit Type 2_Rev B.rvt