



3 South West Elevation



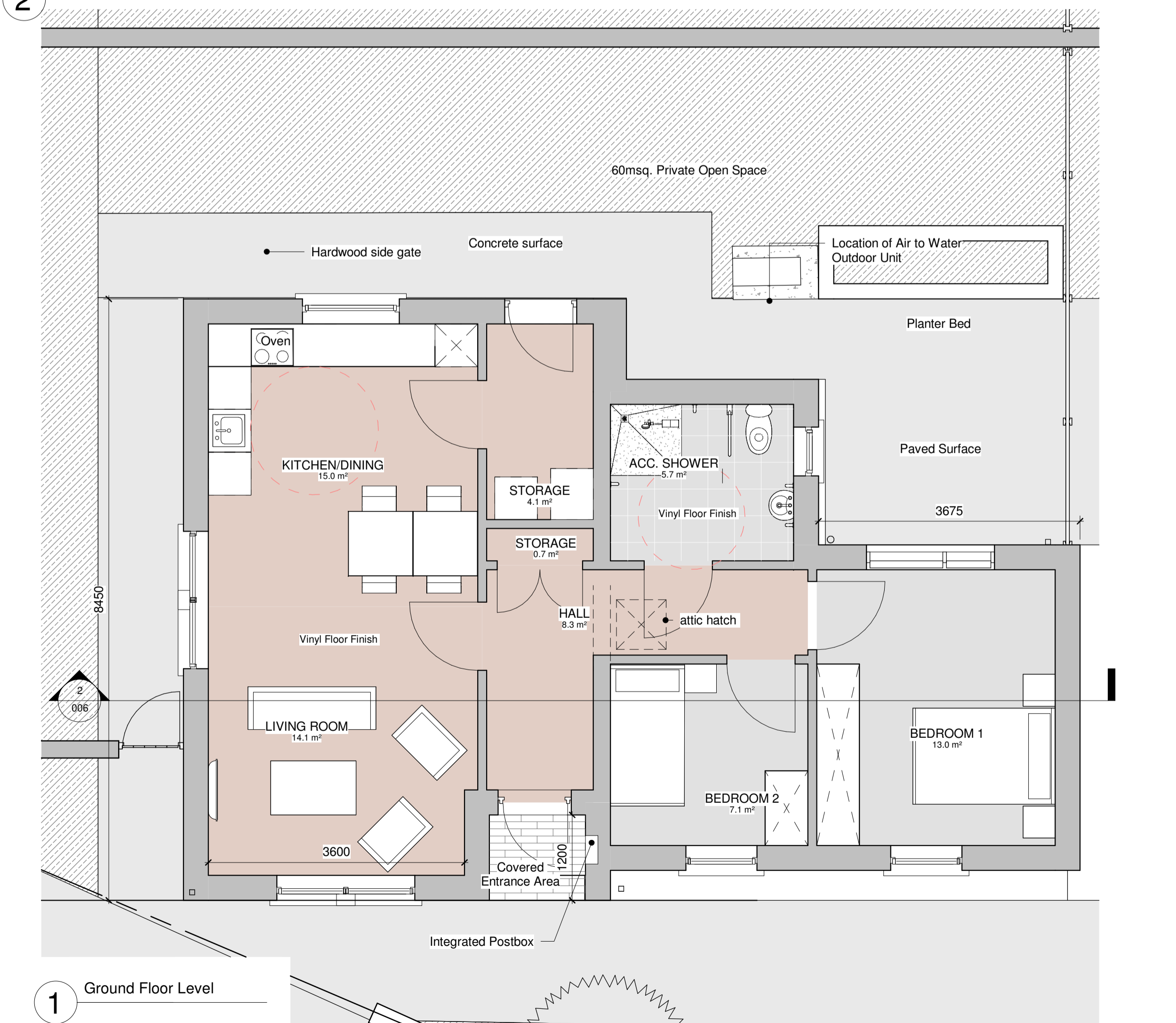
4 North East Elevation



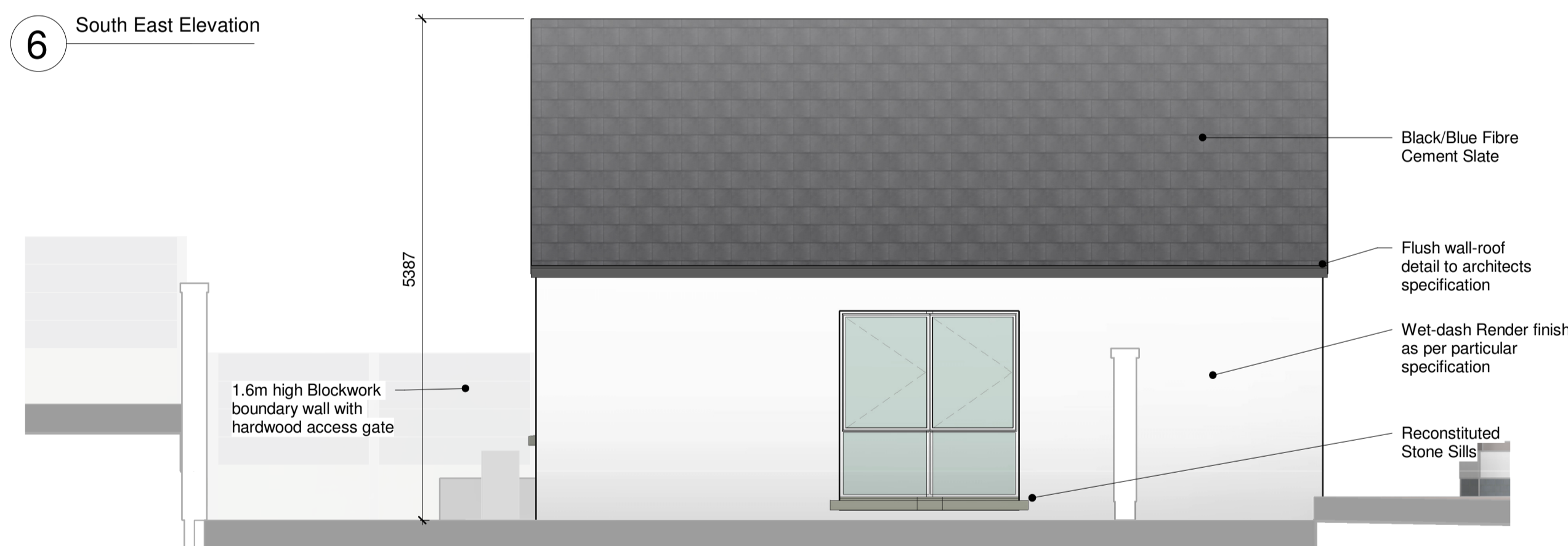
2 Section 1



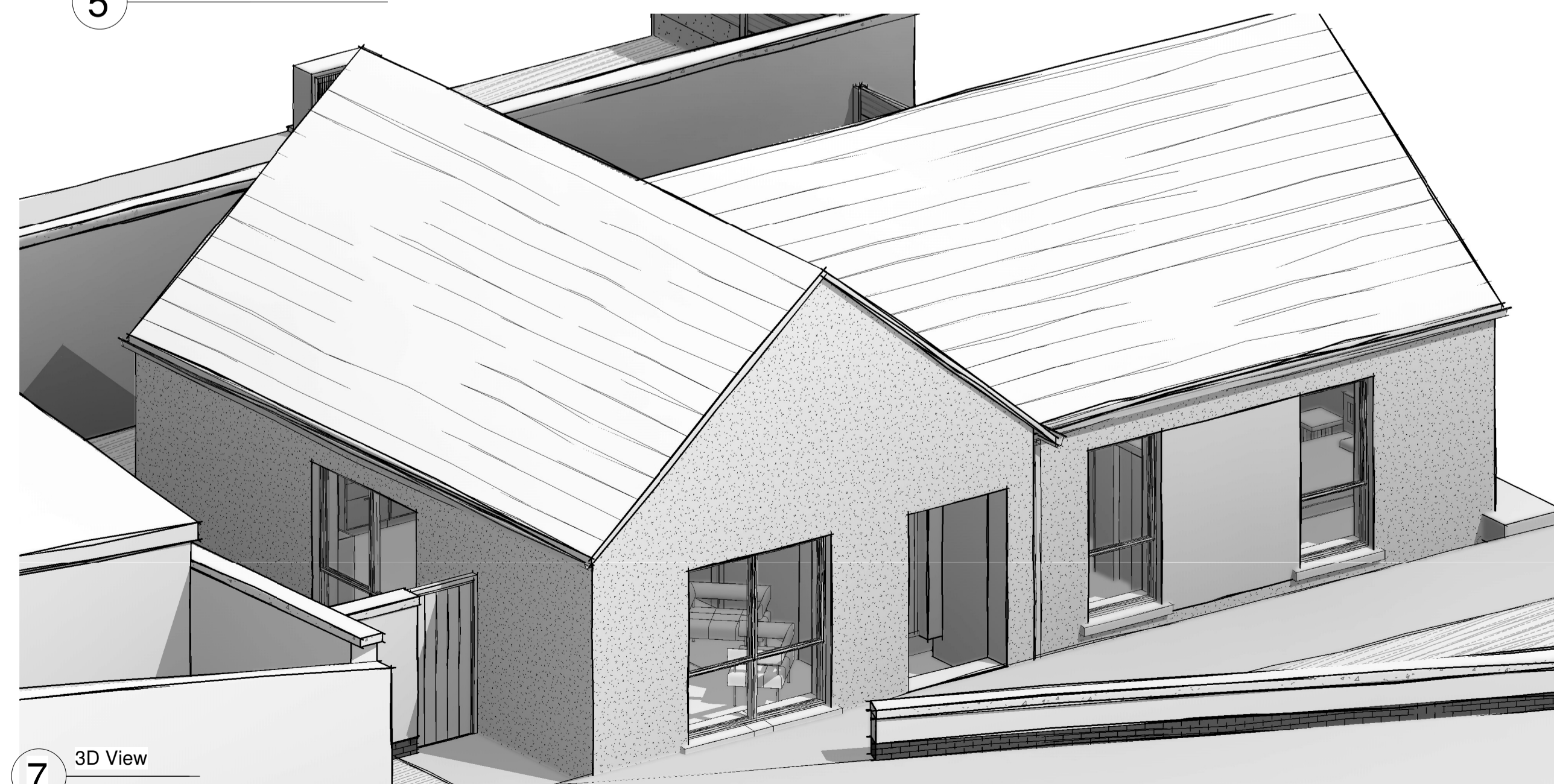
6 South East Elevation



1 Ground Floor Level



5 North West Elevation



7 3D View

AREA SCHEDULE		
2 BED, 3 PERSON (1 STOREY)	REQUIRED MIN AREA (m ²)	PROVIDED AREA (m ²)
GROSS FLOOR AREA (m ²)	60m ²	71.2m ²
MAIN LIVING ROOM (m ²)	13m ²	14.1m ²
AGGREGATE LIVING AREA (m ²)	28m ²	29.1m ²
BEDROOM 1 AREA (m ²)	13m ²	13m ²
BEDROOM 2 AREA (m ²)	7.1m ²	7.1m ²
AGGREGATE BEDROOM (m ²)	20.1m ²	20.1m ²
STORAGE (m ²)	3m ²	4.8m ²

House designed in accordance with Quality Housing for Sustainable Communities DOEHLG 2007

PART 8 CONSULTATION
NOT FOR CONSTRUCTION

Revision Schedule

Rev No.	Rev Description	Rev Date	Issued by	Issued to
A	Internal layout altered	16/5/22	WCC	

Funded by the Irish Government under Rebuilding Ireland, Action Plan for Housing and Homelessness.

WESTMEATH HOUSING DESIGN TEAM
WESTMEATH COUNTY COUNCIL,
CIVIC CENTRE, CHURCH ST.,
ATHLONE, N37 P2T5
Phone: 05064 42100
Web: www.westmeathcoco.ie

PROJECT:
PHASE 2 CONSTRUCTION OF DWELLING UNITS AT ENNELL COURT, MULLINGAR, CO. WESTMEATH

TITLE:
UNIT TYPE 1
PLAN, ELEVATIONS & SECTION

Scale: 1:100 @A3 Datum: MALIN Date: 21/04/22

Drawing No: 115_02_006 Stage: PART 8 Revision: A

Survived	Drawn	Checked	Approved
LN	AF/MK	BC	PH

File Name and Directory:
H:\CAPITAL HOUSING DESIGN TEAM\1.Capital Schemes\115-Ennell Court Phase 2\Drawings\03_Part 8\House\115_02_006_Unit Type 1_Rev B.rvt