

# Housing for All

A new Housing Plan for Ireland

## LEGEND

Note: Details shown on this map is for information purposes only. Further details on any item should be clarified with Westmeath County Council. This map has been produced by Westmeath County Council with available Local Authority and Taille Éireann Surveying Base Data.

License No. CYAL50511417  
© Taille Éireann - Surveying  
NOTE - UNAUTHORISED REPRODUCTION OF THIS MAP INFRINGES STATE COPYRIGHT

- Site extents shown outlined in RED —
- ACA Former Belvedere Orphans Institution shown outlined in —
- Site Notice Location ●
- Site Area 0.2155 Ha

**Not For Construction**  
Do not scale drawings.  
Use figured dimensions only.

### Revision Schedule

Rev No.	Rev Description	Rev Date	Issued by	Issued to
P01	Planning - Part VIII Submission	20/04/26	WCC	WCC



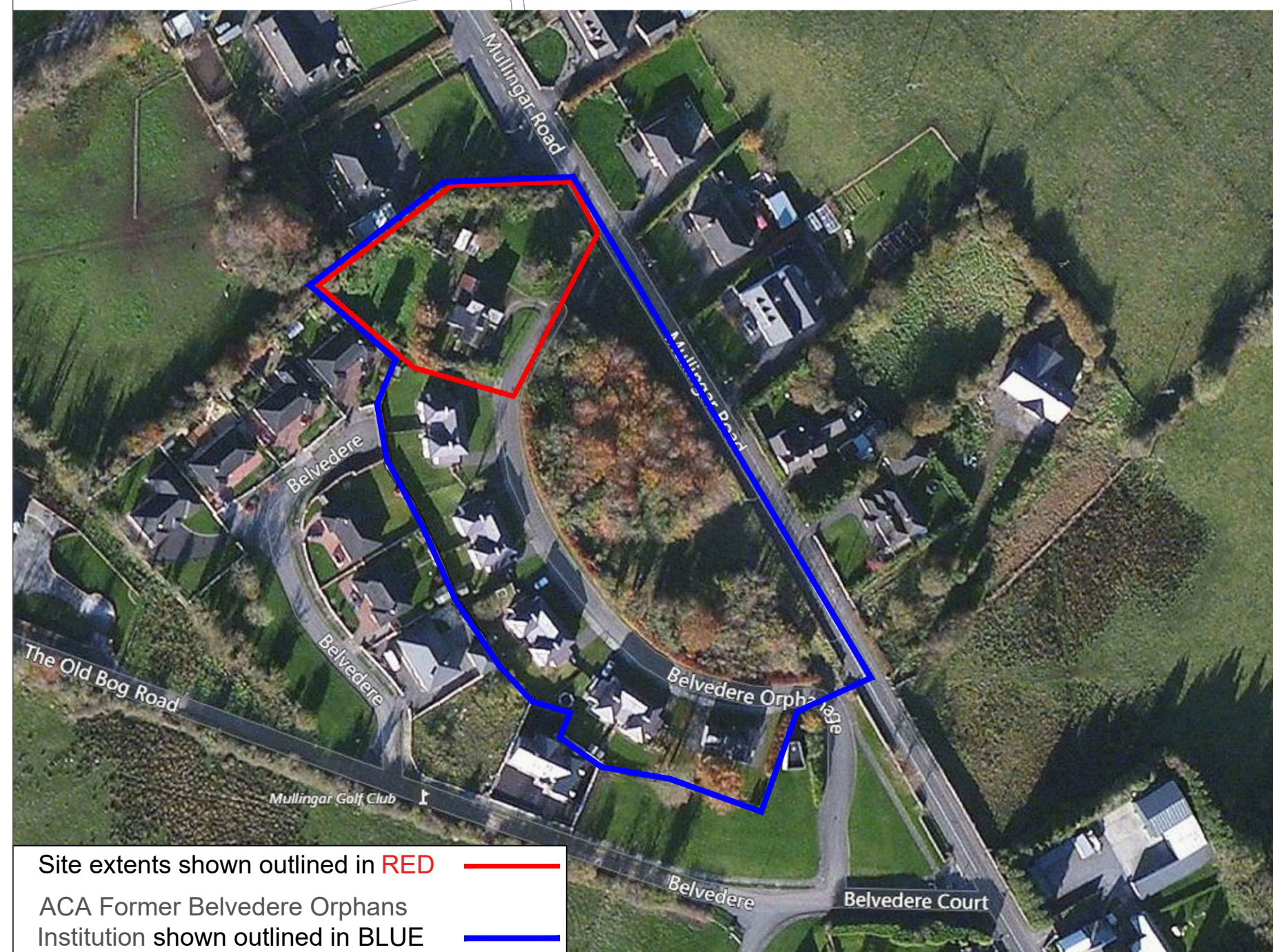
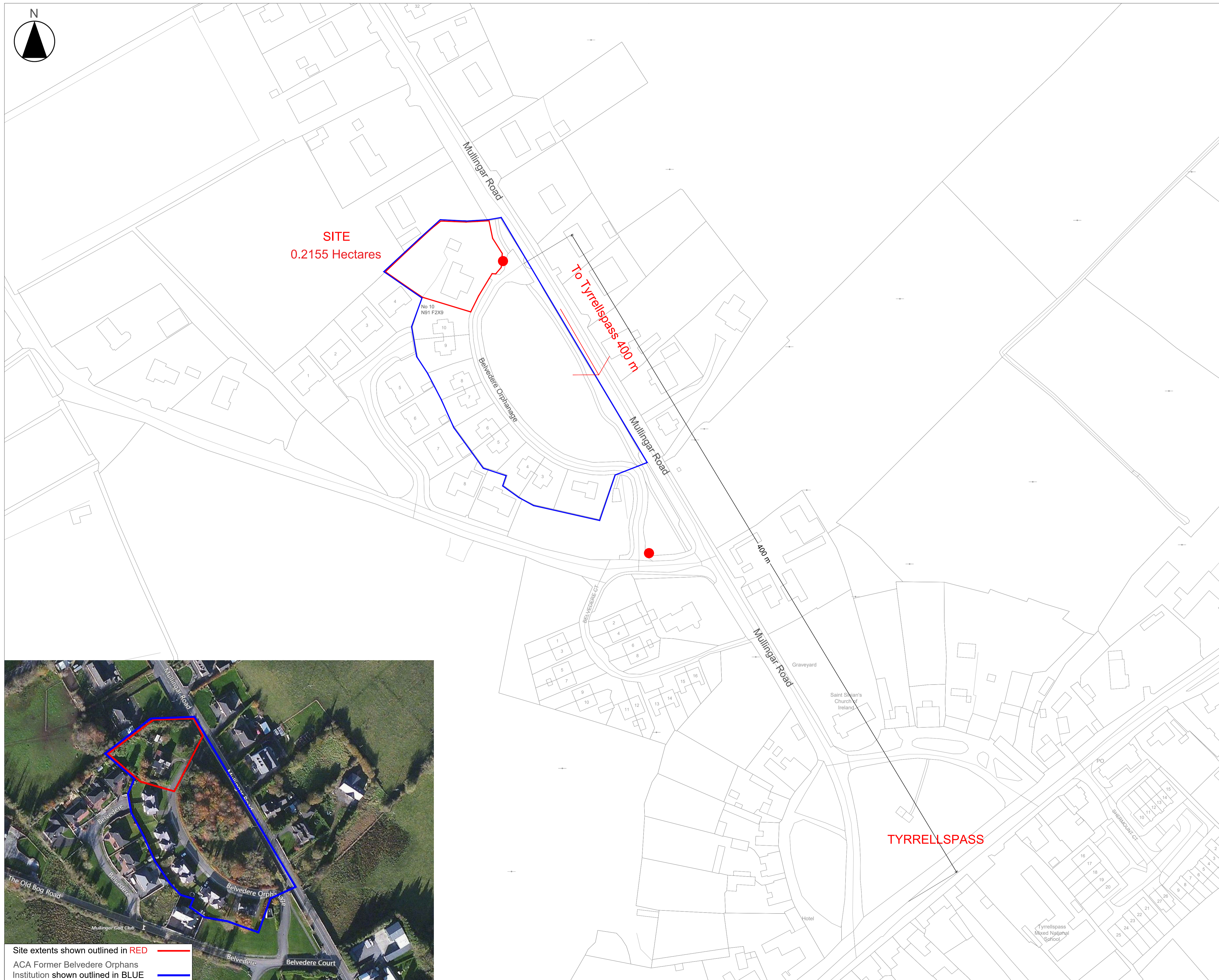
WESTMEATH HOUSING DESIGN TEAM  
CIVIC CENTRE, CHURCH ST, ATHLONE, N37 P2T5  
Phone: 09064 42100  
Web: www.westmeathcoco.ie

**PROJECT:**  
CONSTRUCTION OF 5 DWELLING UNITS  
AT BELVEDERE ORPHANAGE,  
TYRRELLSPASS

**TITLE:**  
SITE LOCATION MAP

<b>Drawing No:</b> 105-WCC-ZZ-ZZ-DR-A-0001	<b>Scale:</b> 1:1000 @ A1	<b>Designed</b> -
<b>Stage:</b> PLANNING - PART VIII	<b>Datum:</b> MALIN	<b>Drawn</b> AC
<b>Status</b> A2b	<b>Rev</b> P01	<b>Checked</b> TOH
<b>Date:</b> 07/07/25		<b>Approved</b> -

**File Name and Directory:**  
H:\CAPITAL HOUSING DESIGN TEAM\1-Capital Schemes\105-Belvedere Orphanage\DRAWINGS\5. Part 8 Planning\2. DWG's



Site extents shown outlined in RED —  
ACA Former Belvedere Orphans Institution shown outlined in BLUE —