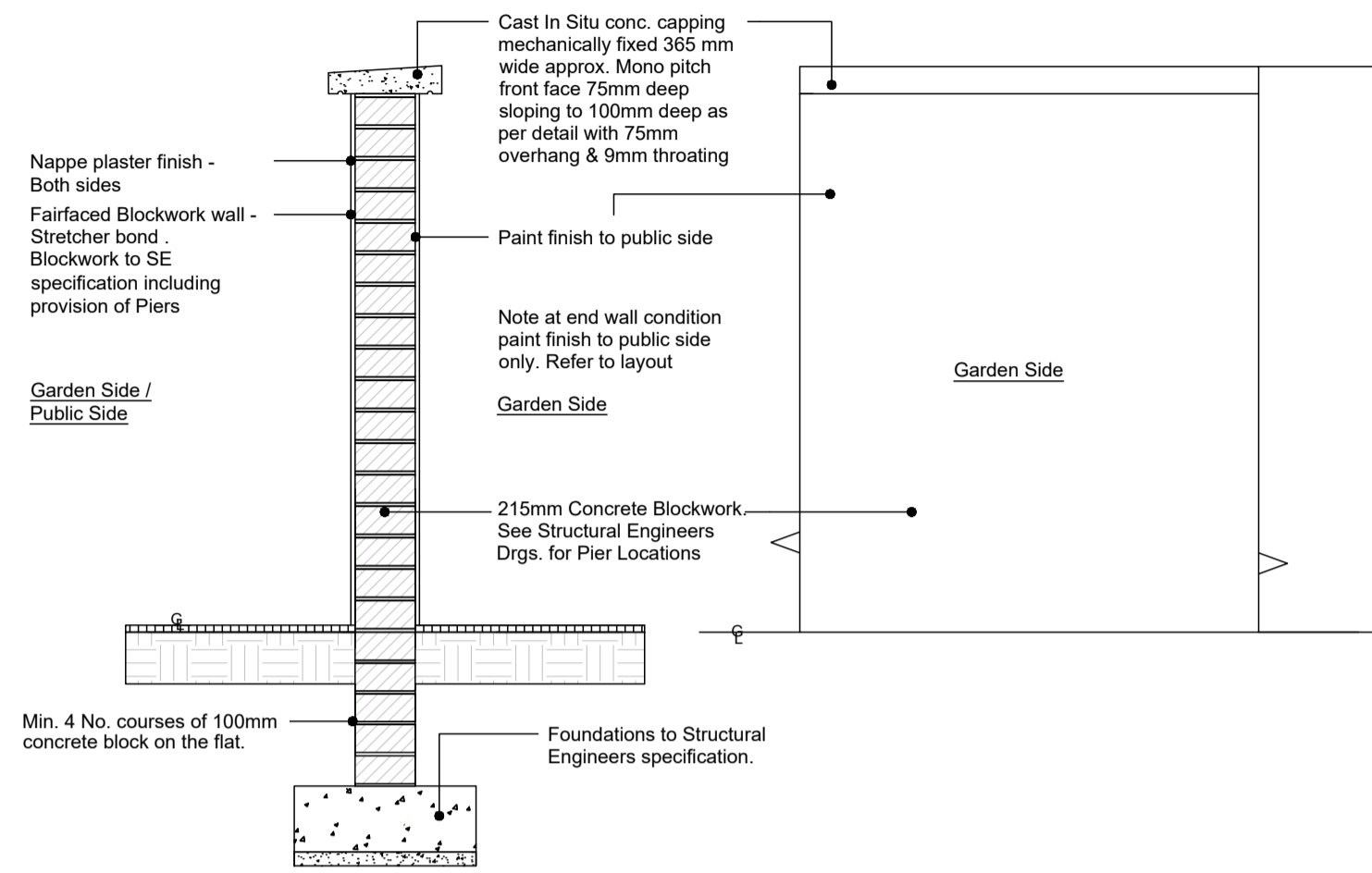
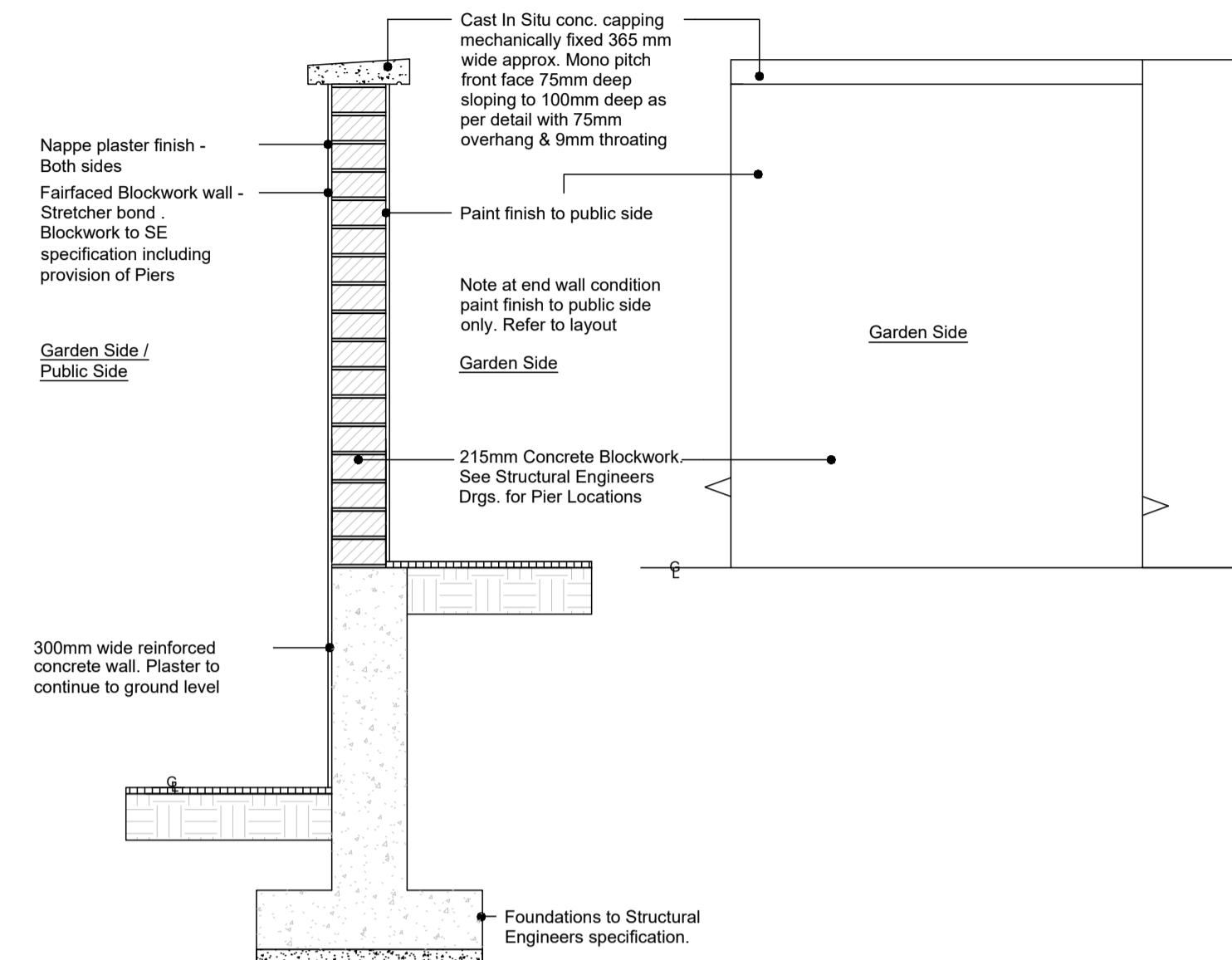


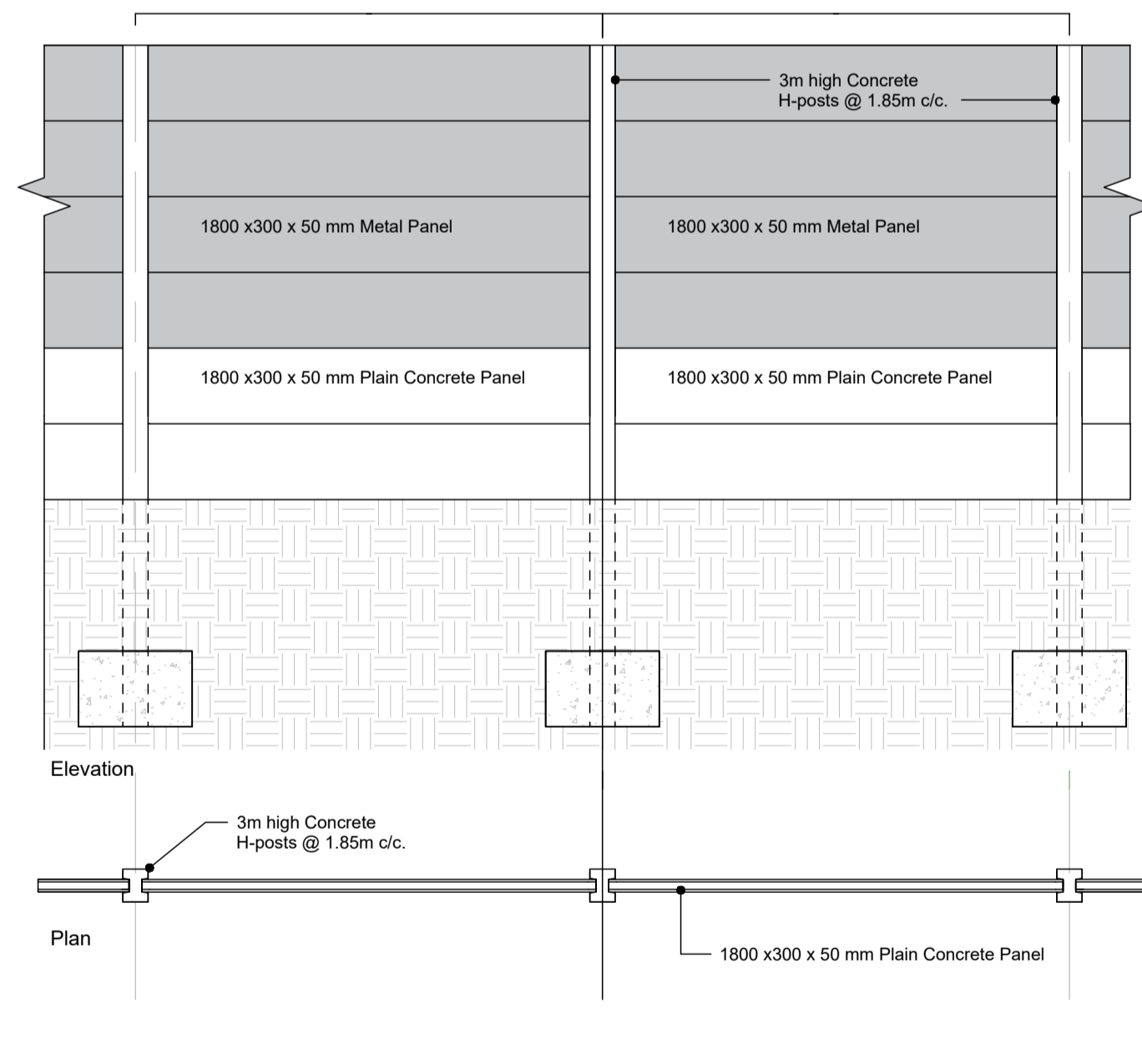
**Type 01 -**  
 215mm Blockwork Ramp walls 0.9m high, Rendered both sides  
 All to engineers details



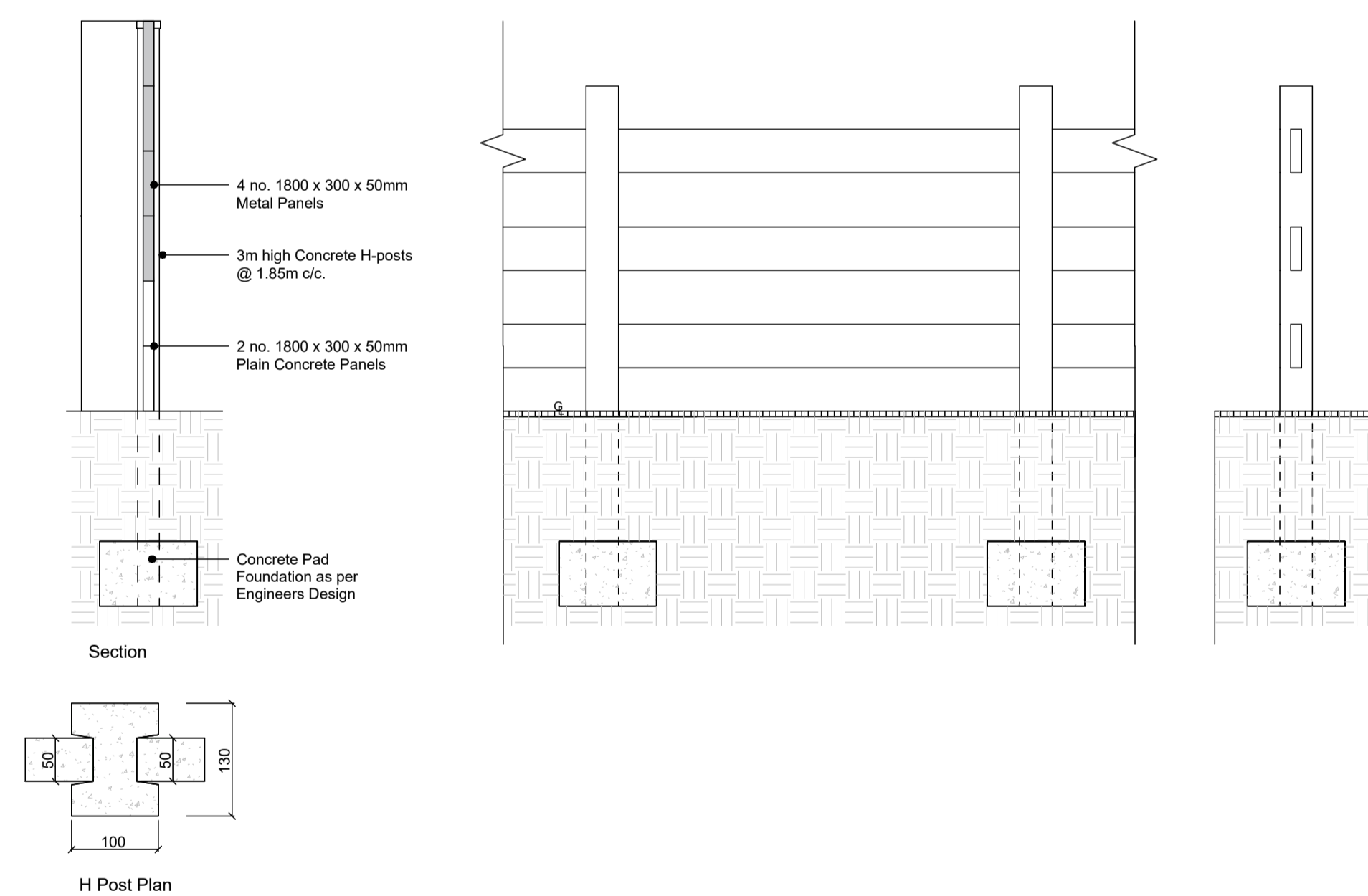
**Type 02 -**  
 215mm Blockwork Garden walls 2m high, Rendered both sides  
 All to engineers details



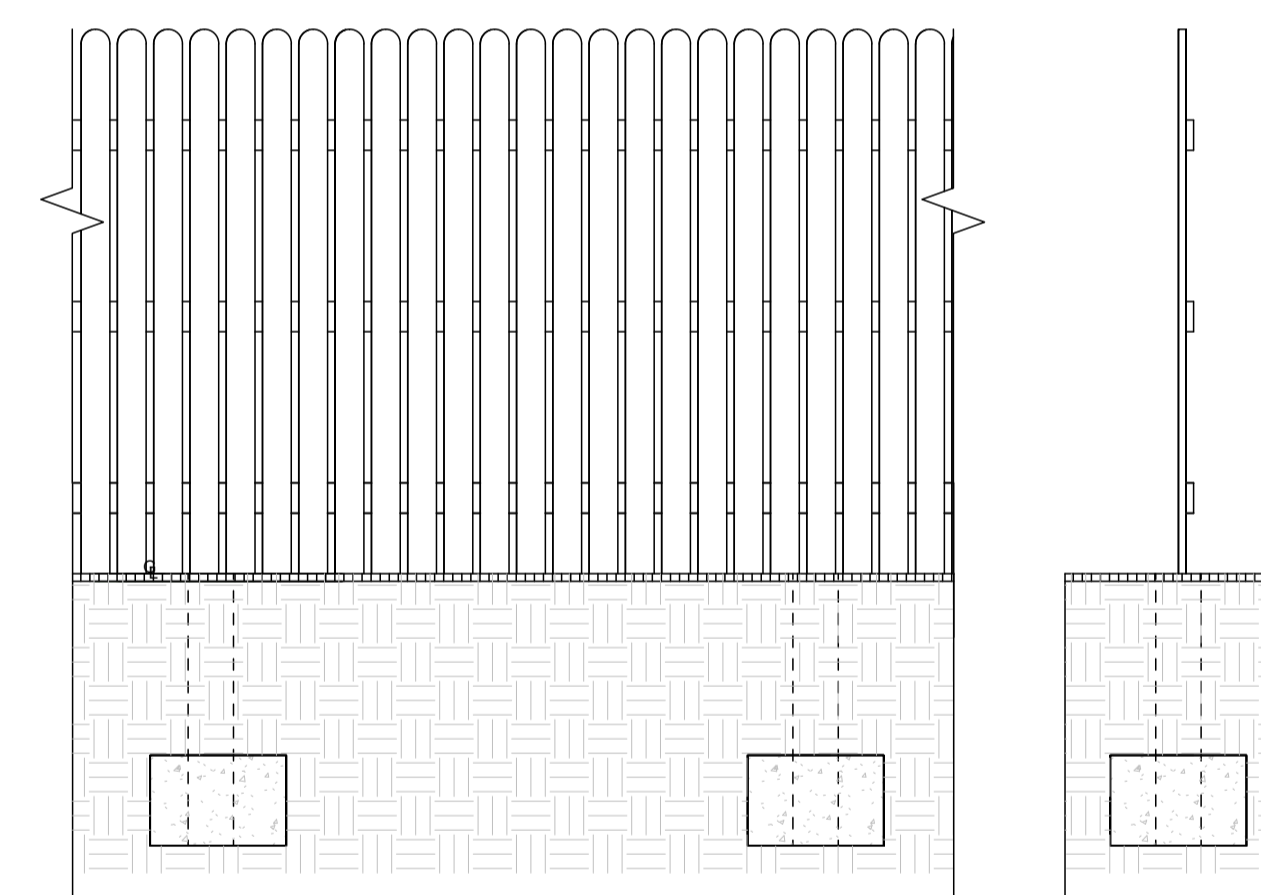
**Type 03 -**  
 215mm Blockwork Garden wall 2m high on reinforced concrete wall, Rendered both sides  
 All to engineers details



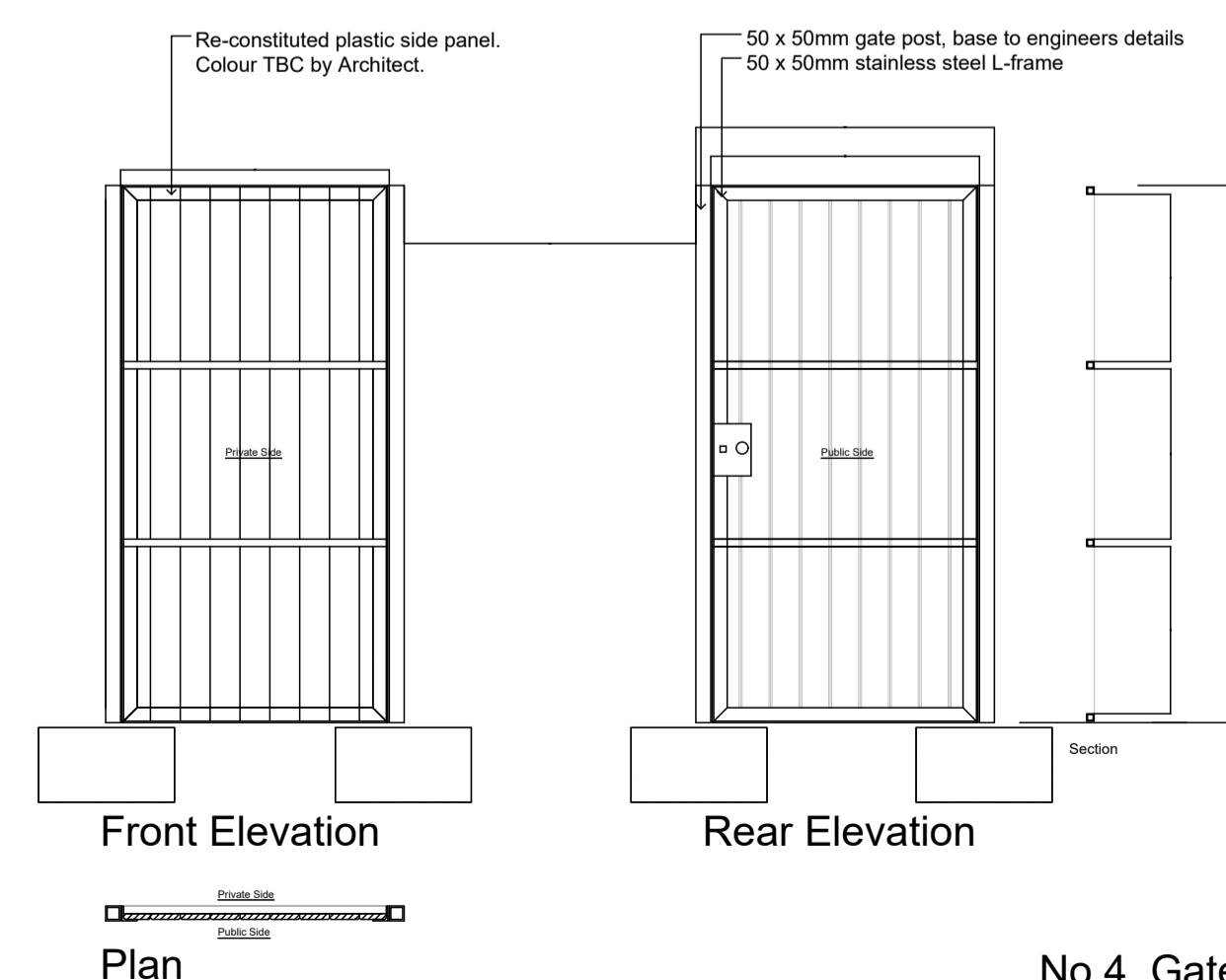
**Type 04 -**  
 Typical Plan & Section for Concrete Post & Panel Fence - 1.8m high 100mm wide



**Type 05 -**  
 Typical Plan & Section for Timber Post & rail style fencing  
 1.5m high 150mm wide



**Type 06 -**  
 Typical Plan & Section for Timber Post & rail style fencing  
 1.5m high 150mm wide



**No. 4 Gates**

**Not For Construction**  
 Do not scale drawings.  
 Use figured dimensions only.

Revision Schedule

Rev No.	Rev Description	Rev Date	Issued by	Issued to
P01	Planning - Part VIII Submission	20/04/26	WCC	WCC



**WESTMEATH HOUSING DESIGN TEAM**  
 CIVIC CENTRE, CHURCH ST., ATHLONE, N37 P2T5  
 Phone: 08964 42100  
 Web: www.westmeathcoco.ie

**PROJECT:**  
 CONSTRUCTION of 5 DWELLING UNITS  
 AT BELVEDERE ORPHANAGE,  
 TYRRELLSPASS

**TITLE:**  
 PROPOSED SITE BOUNDARY TREATMENT  
 DETAILS

<b>Drawing No:</b> 105-WCC-ZZ-ZZ-M2-A-0502	<b>Scale:</b> 1:25 @ A1	<b>Designed</b> -
<b>Stage:</b> PLANNING - PART VIII	<b>Datum:</b> MALIN	<b>Drawn</b> AC
<b>Status</b> A2b	<b>Rev</b> P01	<b>Checked</b> -
	<b>Date:</b> 10/03/26	<b>Approved</b> -

**File Name and Directory:**  
 H:\CAPITAL HOUSING DESIGN TEAM1-Capital Schemes\139- Harbour Road Mullingar\2. Stage 1 Drawings