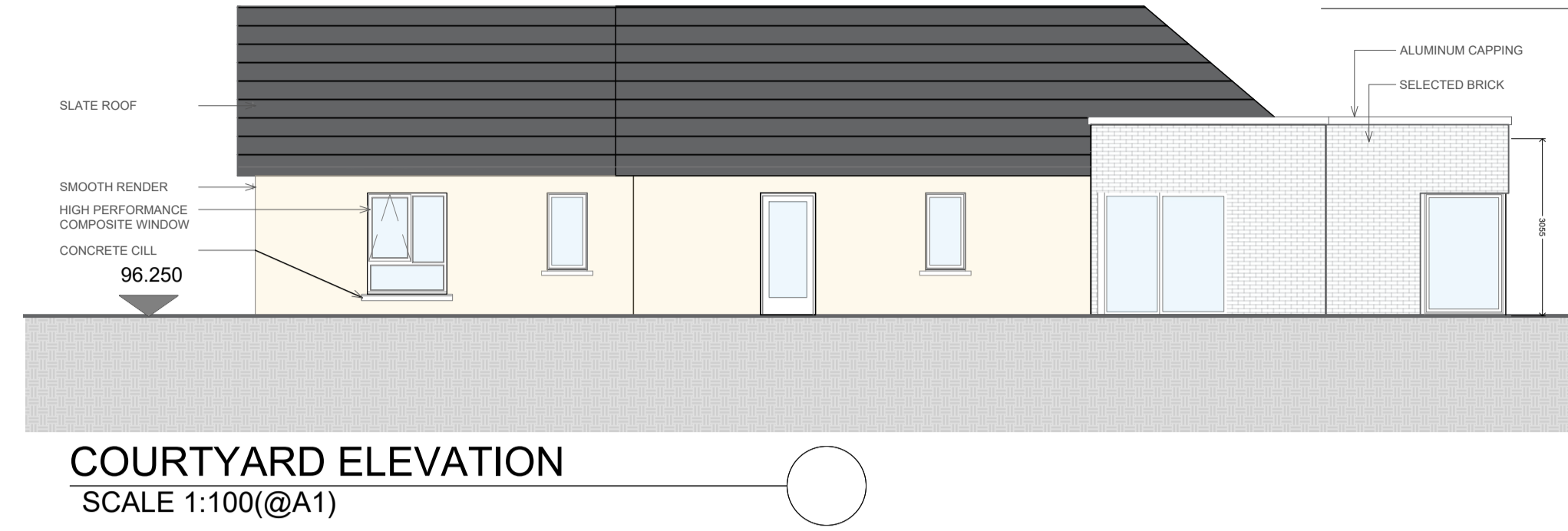
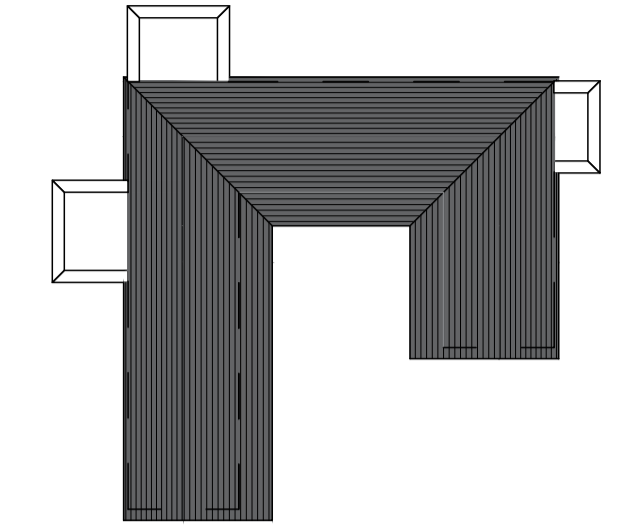




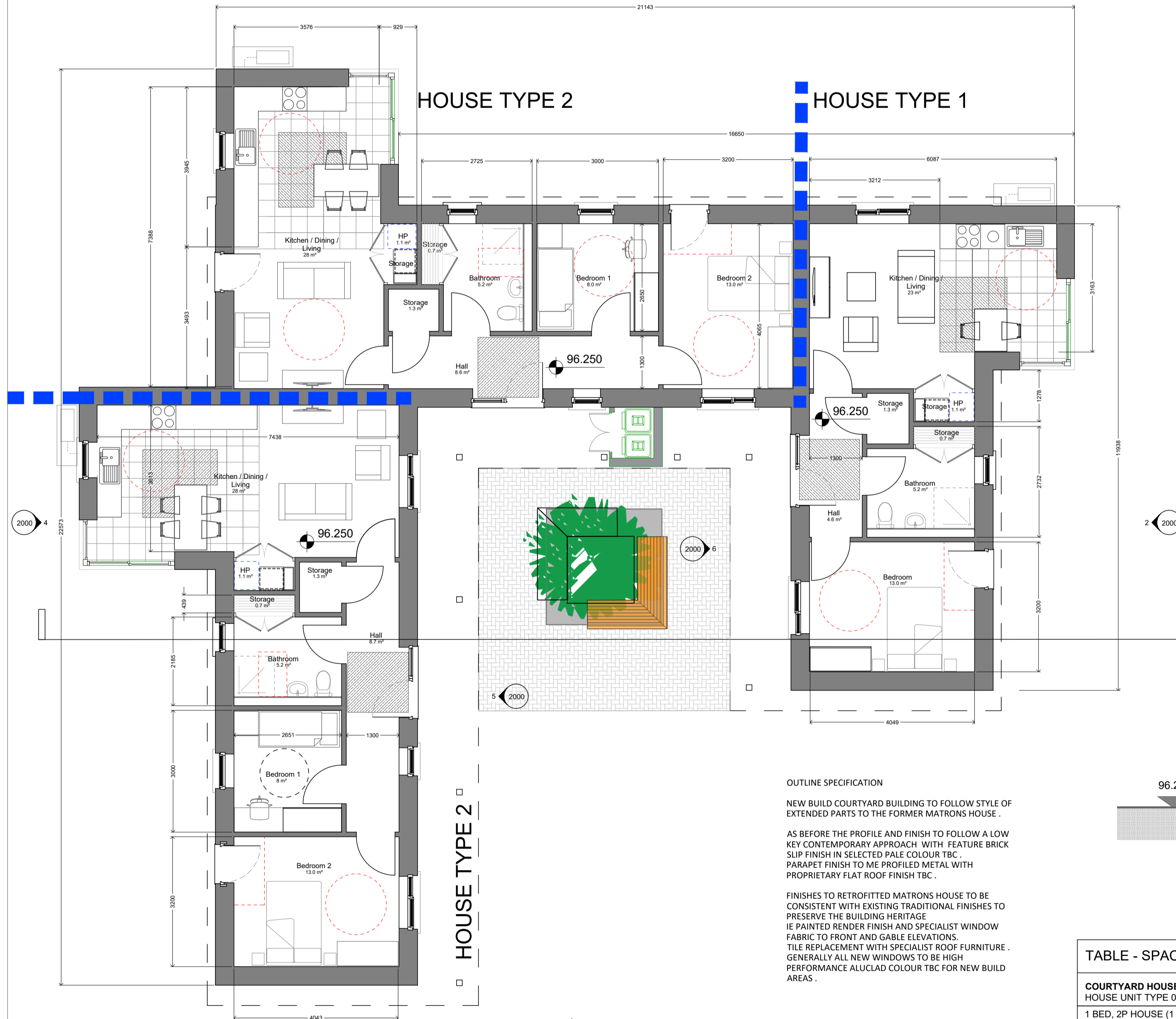
**BUILDING CROSS SECTION**  
SCALE 1: 75(@A1)



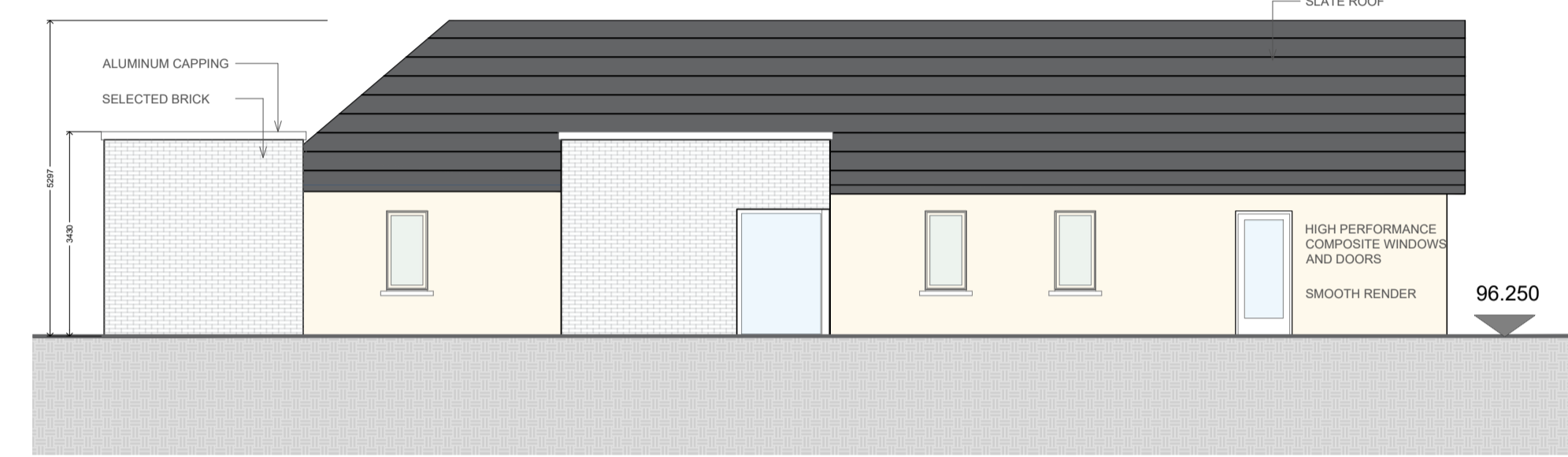
**COURTYARD ELEVATION**  
SCALE 1:100(@A1)



**KEY ROOF PLAN**  
**COURTYARD ARRANGEMENT**



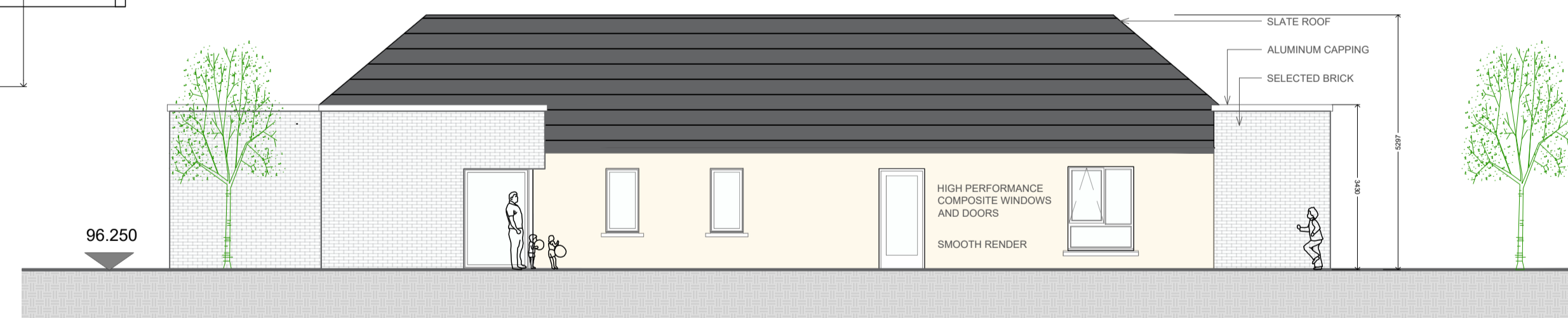
**BUILDING CROSS SECTION**  
SCALE 1: 75(@A1)



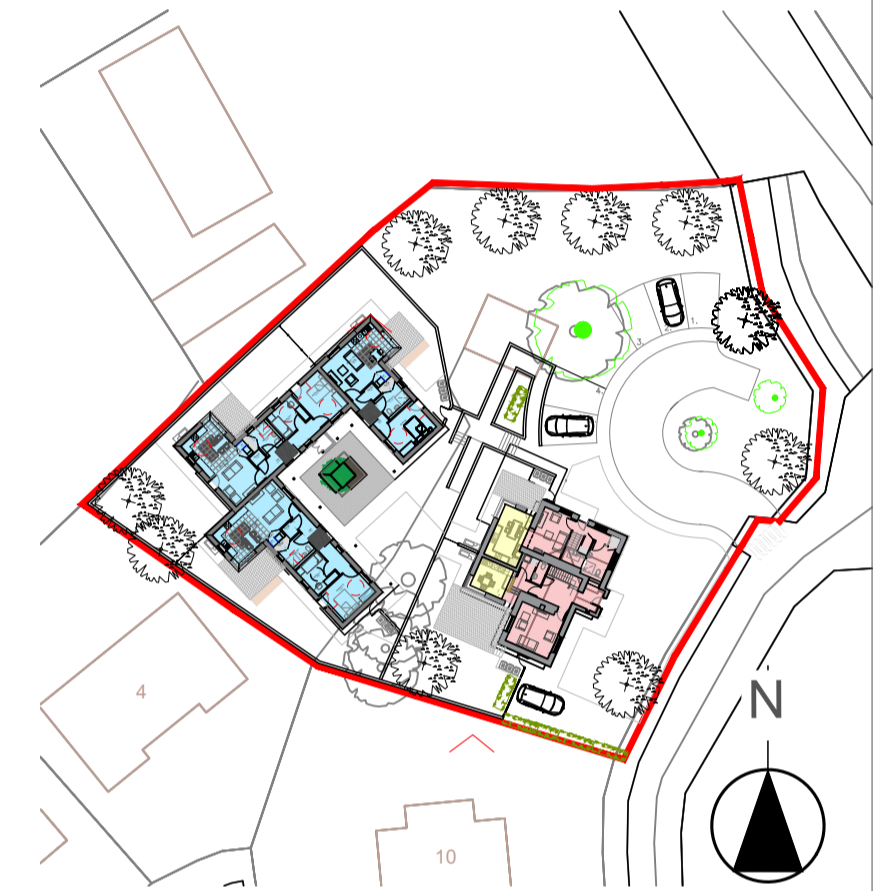
**COURTYARD ELEVATION**  
SCALE 1:100(@A1)



**COURTYARD ELEVATION**  
SCALE 1:100(@A1)



**REAR ELEVATION HOUSE UNITS**  
SCALE 1:100(@A1)



**SITE KEY PLAN COURTYARD**  
NEW BUILD BLUE  
EXTENSION YELLOW  
REFURBISHMENT

Revision Schedule

Rev No.	Rev Description	Rev Date	Issued by	Issued to
P01	Planning - Part VIII Submission	20/04/26	WCC	WCC

**OUTLINE SPECIFICATION**  
NEW BUILD COURTYARD BUILDING TO FOLLOW STYLE OF EXTENDED PARTS TO THE FORMER MATRONS HOUSE.  
AS BEFORE THE PROFILE AND FINISH TO FOLLOW A LOW KEY CONTEMPORARY APPROACH WITH FEATURE BRICK SLIP FINISH IN SELECTED PALE COLOUR TBC. PARAPET FINISH TO ME PROFILED METAL WITH PROPRIETARY FLAT ROOF FINISH TBC.  
FINISHES TO RETROFITTED MATRONS HOUSE TO BE CONSISTENT WITH EXISTING TRADITIONAL FINISHES TO PRESERVE THE BUILDING HERITAGE I.E. PAINTED RENDER FINISH AND SPECIALIST WINDOW FABRIC TO FRONT AND GABLE ELEVATIONS. TILE REPLACEMENT WITH SPECIALIST ROOF FURNITURE. GENERALLY ALL NEW WINDOWS TO BE HIGH PERFORMANCE ALUCLAD COLOUR TBC FOR NEW BUILD AREAS.

**TABLE - SPACE PROVISION AND ROOM SIZES FOR PROPOSED DWELLING** NOTE ALL DWELLING ARE UNIVERSAL DESIGN - UD\_ AGE FRIENDLY

COURTYARD HOUSE UNITS	TARGET GROSS FLOOR AREA (m <sup>2</sup> )	MINIMUM - MAIN LIVING ROOM (m <sup>2</sup> )	AGGREGATE LIVING AREA (m <sup>2</sup> )	AGGREGATE BEDROOM (m <sup>2</sup> )	STORAGE (m <sup>2</sup> )	No of units
HOUSE UNIT TYPE 01						
1 BED, 2P HOUSE (1 STOREY)	45m <sup>2</sup> (44m <sup>2</sup> + 10% = 48.4m <sup>2</sup> )	11m <sup>2</sup>	23m <sup>2</sup>	11m <sup>2</sup>	2m <sup>2</sup>	
Based on A14 1B-2P-1S- UD	50m <sup>2</sup> Proposed Area	11m <sup>2</sup>	23.6m <sup>2</sup>	13m <sup>2</sup>	2m <sup>2</sup>	1 no.
HOUSE UNIT TYPE 2						
2 BED, 3P HOUSE (1 STOREY)	60m <sup>2</sup> (60m <sup>2</sup> + 10% = 66m <sup>2</sup> )	13m <sup>2</sup>	28m <sup>2</sup>	20m <sup>2</sup>	3m <sup>2</sup>	2 No.
Based on H16 2B-3P-1S- UD	68 M <sup>2</sup> Proposed Area	13m <sup>2</sup>	27.9 / 28.1m <sup>2</sup>	21m <sup>2</sup>	3m <sup>2</sup>	3 No Total

House designed in accordance with Design Manual for Quality Housing *QHSC Floor Areas* Table 5.9 Standard Internal Layouts DOHLGH 2022  
All internal Layouts are extrapolated from the template models maintaining space provision and inter relationship as set out in template . All units set out to accessible age friendly and use the UD models and space provisions .

Do not scale drawings.  
Use figured dimensions only.



**WESTMEATH HOUSING DESIGN TEAM**  
CIVIC CENTRE, CHURCH ST, ATHLONE, N37 P2T5  
Phone: 09064 42100  
Web: www.westmeathcoco.ie  
**PROJECT:**  
CONSTRUCTION OF 5 DWELLING UNITS AT BELVEDERE ORPHANAGE, TYRELLSPASS

**TITLE:**  
COURTYARD HOUSE UNITS  
PROPOSED GROUND FLOOR LAYOUT  
ROOF PLAN, ELEVATIONS AND SECTION.

<b>Drawing No:</b> 105-WCC-02-ZZ-DR-A-1000	<b>Scale:</b> 1:75 / 100 @ A1	<b>Designed</b> -
<b>Stage:</b> PLANNING - PART VIII	<b>Datum:</b> MALIN	<b>Drawn</b> ToH
<b>Status</b> A2b	<b>Rev</b> P01	<b>Checked</b> TOH
	<b>Date:</b> 30/10/2025	<b>Approved</b> -

**File Name and Directory:**  
H:\CAPITAL HOUSING DESIGN TEAM\1-Capital Schemes\105-Belvedere Orphanage\DRAWINGS\5. Part 8 Planning\2. DWG's