

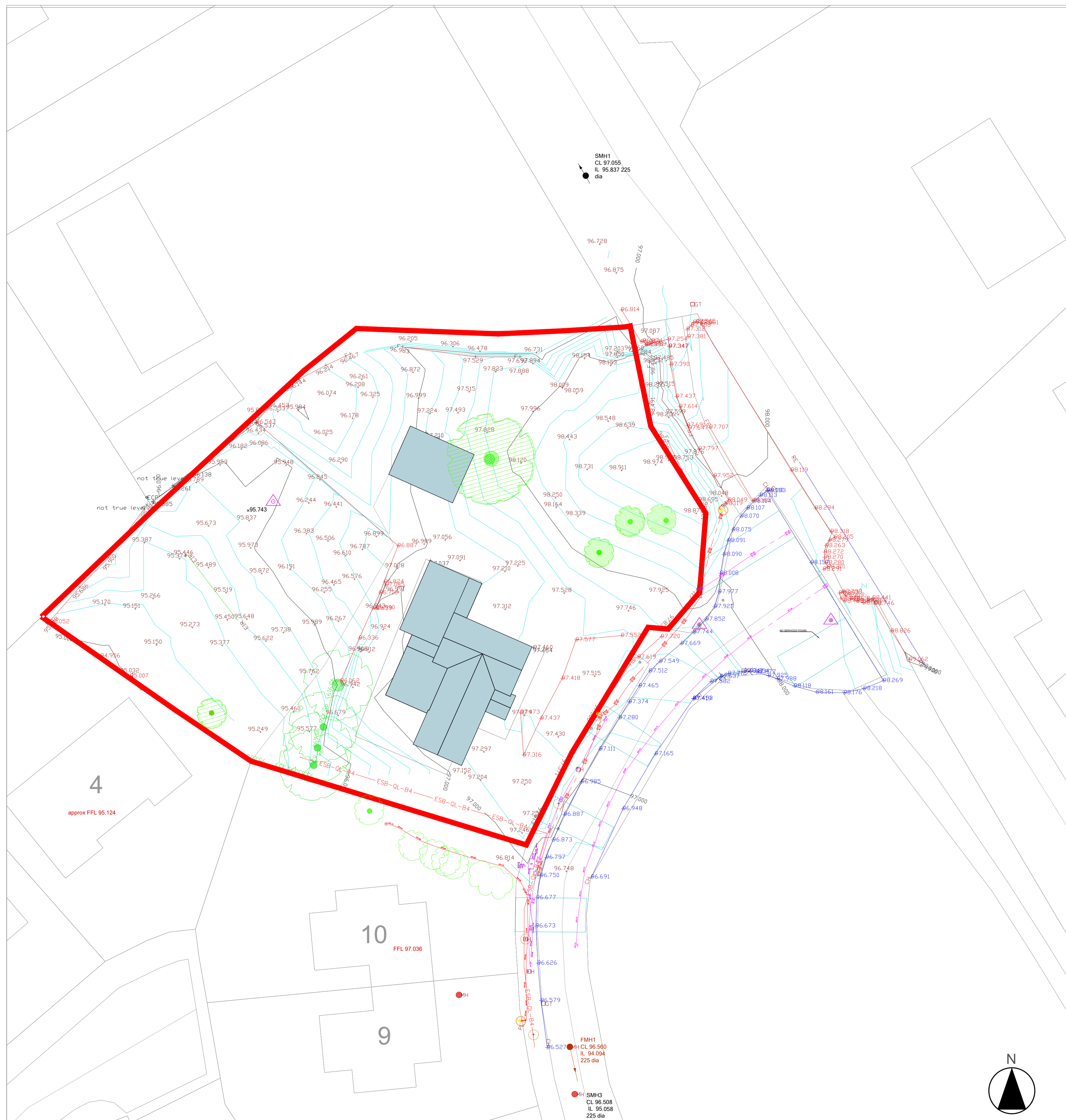
# Housing for All

A new Housing Plan for Ireland

## LEGEND

Site extents shown outlined in RED

SERVICES LEGEND	
UNDERGROUND ELECTRICITY LINE	FOLL DRAINAGE
ELECTRICAL MANHOLE	FOLL MANHOLE
OVERHEAD LINE WITH POLE	STORM DRAINAGE
OVERHEAD ELECTRIC	STORM DRAINAGE MANHOLE
UNDERGROUND HV ELECTRICITY LINE	COMBINED DRAINAGE
6M HIGH STREET LIGHT	COMBINED DRAINAGE MANHOLE
MINI PILLAR	PRODUCT DRAINAGE
UG ELECTRIC TRAFFIC CONTROL	PRODUCT DRAINAGE MANHOLE
TRAFFIC CONTROL MANHOLE	CHEMICAL LINE
ER	CHEMICAL MANHOLE
ER CHAMBER	ROAD GULLY
OVERHEAD LINE WITH POLE	GULLY TRAP
ENET	WATER MAIN
ENET CHAMBER	SLURGE VALVE
COMPS	FIRE HYDRANT
COMPS CHAMBER	WATER METER
VIRGIN	SCOUR VALVE
VIRGIN CHAMBER	PRESSURE RELEASE VALVE
FIBRE	AIR VALVE
FIBRE CHAMBER	NON-RETURN VALVE
AURORA TELECOM	FUEL LINE/TANK
AURORA TELECOM CHAMBER	GAS SV
CATV	GAS LINE
CATV CHAMBER	GAS HIGH PRESSURE LINE
BT/SAT	GL 00.00 GROUND LEVEL (METRES - OS DATUM)
BT/SAT CHAMBER	GL 10.00 COVER LEVEL (METRES - OS DATUM)
SIRD FIBRE	IL 10.00 INVERT LEVEL (METRES - OS DATUM)
SIRD CHAMBER	DP1.50 DEPTH TO TOP OF SERVICE DUCT OR CABLE
UNIDENTIFIED SERVICE	DP ON MANHOLES = INVERT LEVEL OF CHAMBER
UNIDENTIFIED CHAMBER	DP ON DRAINAGE = INVERT LEVEL OF PIPE
EARTH LINE AND RODS	UTO UNABLE TO OPEN
TRAFFIC SENSORS	OSA OUTSIDE SURVEY AREA
CCTV POLE	UTT UNABLE TO TRACE
UTILITIES CABINET	SURVEY AREA



**Not For Construction**

Do not scale drawings.  
Use figured dimensions only.

### Revision Schedule

Rev No.	Rev Description	Rev Date	Issued by	Issued to
P01	Planning - Part VIII Submission	20/04/26	WCC	WCC



WESTMEATH HOUSING DESIGN TEAM  
CIVIC CENTRE, CHURCH ST, ATHLONE, N37 P2T5  
Phone: 08964 42100  
Web: www.westmeathcoco.ie

**PROJECT:**  
CONSTRUCTION OF 5 DWELLING UNITS  
AT BELVEDERE ORPHANAGE,  
TYRRELLSPASS

**TITLE:**  
EXISTING TOPOGRAPHICAL SITE SURVEY

<b>Drawing No:</b> 105-WCC-ZZ-ZZ-DR-A-0002	<b>Scale:</b> 1:200 @ A1	<b>Designed</b> -
<b>Stage:</b> PLANNING - PART VIII	<b>Datum:</b> MALIN	<b>Drawn</b> AC
<b>Status</b> A2b	<b>Rev</b> P01	<b>Checked</b> TOH
	<b>Date:</b> 07/07/25	<b>Approved</b> -

**File Name and Directory:**  
H:\CAPITAL HOUSING DESIGN TEAM\1-Capital Schemes\105-Belvedere Orphanage\DRAWINGS\5. Part 8 Planning\2-DWG

