

SPORTS LIGHTING LEGEND

SL-1 SPORTS FLOODLIGHT FITTING ARRANGEMENT - CONSISTING OF 2KW LED FLOODLIGHTS MOUNTED ON COLUMNS AS INDICATED

ALL LIGHTING TO BE CENTRALLY CONTROLLED VIA PHOTOCELL AND TIME CLOCK AT THE MAIN ENERGY CENTRE. EACH SPORTS LIGHTING PITCH TO BE CONTROLLED VIA LOCAL CONTROL BOX (HOA) LINKED TO MAIN CONTROL PANEL. SEE LIGHTING SCHEDULE FOR FULL DETAILS OF SPORTS FLOOD LIGHTING. ALL SPORTS LIGHTING MINI PILLARS SHALL INCLUDE A 12CORE LINK CABLE BETWEEN THE MAIN CONTROL LOCATION AND MINI PILLAR FOR SWITCHING CONTROLS. ALL STREET LIGHTING COLUMNS TO BE 250mm BEHIND FOOTPATH BOUNDARY LINE FOR PEDESTRIAN ACCESS.

LUMINAIRE LEGEND

EX-1 HIGH PERFORMANCE OUTDOOR 60W LED POST-TOP 10,000lm LUMINAIRE 3000K IP66 MOUNTING HEIGHT 6m

EX-2 HIGH EFFICIENCY 72W LED POST-TOP 9,400lm LUMINAIRE 3000K IP66 MOUNTING HEIGHT 6m

EX-3 HIGH EFFICIENCY OUTDOOR 72W LED POST-TOP 9,400lm LUMINAIRE 3000K IP66 MOUNTING HEIGHT 6m

EX-4 HIGH EFFICIENCY OUTDOOR LED WALL-MOUNTED 2,000lm LUMINAIRE 3000K IP66 MOUNTING HEIGHT 3m

EX-5 HIGH EFFICIENCY OUTDOOR 18W LED WALL-MOUNTED 2,385lm LUMINAIRE 3000K IP66 MOUNTING HEIGHT 3m

EXTERNAL LIGHTING NOTES

THE EXTERNAL LIGHTING INSTALLATION SHALL BE CONTROLLED IN LINE WITH THE BELOW.

- SECURITY LIGHTING MOUNTED CLOSE TO BUILDING PERIMETER SHALL LIGHT UP PATHWAYS AROUND THE PERIMETER OF THE BUILDING AND ENTRANCE DOORS TO THE BUILDING. LIGHTING ONLY REQUIRED DURING HOURS OF DARKNESS WHEN THE BUILDING IS NOT IN USE.
- CAR PARK AND PATH LIGHTING - LIGHTING ONLY REQUIRED DURING HOURS OF DARKNESS WHEN THE BUILDING IS IN USE.

IN ADDITION TO THE NORMAL MANUAL LIGHTING CONTROLS PROVIDED, SEPARATE TIME CLOCK AND PHOTO CELL CONTROLS SHALL BE PROVIDED ON THE SECURITY LIGHTING AND CAR PARK ZONES. THESE SHALL BE INCORPORATED INTO THE DESIGN DEVELOPMENT TIME CLOCK AND PHOTO CELL CONTROL SHALL BE PROVIDED ON THE EXTERNAL LIGHTING DISTRIBUTION BOARD AND MINI PILLARS.

LIGHTING COLUMN LEGEND

Col 1 PROPOSED 6m LIGHTING COLUMN

Col 2 PROPOSED 15m LIGHTING COLUMN

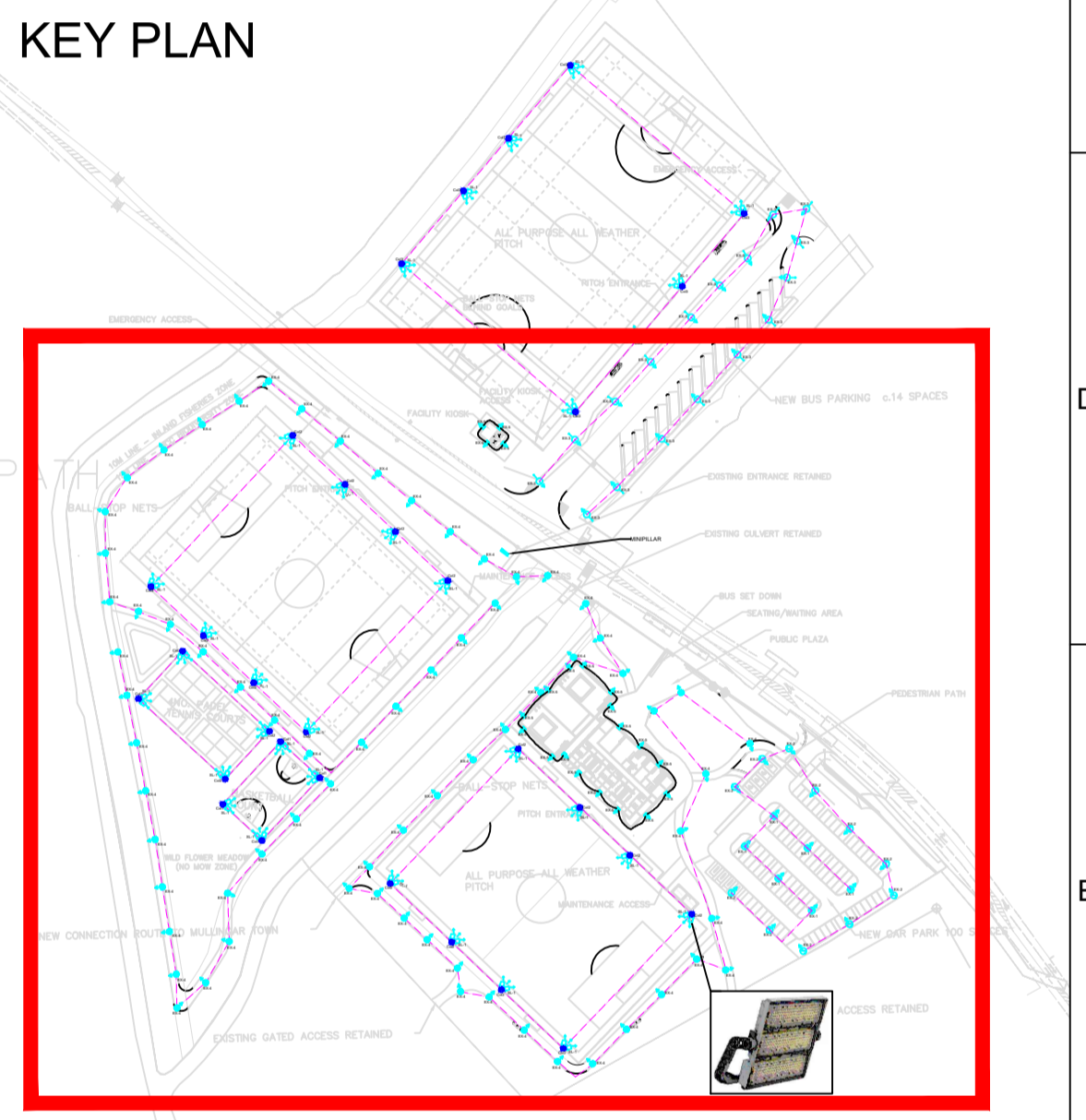
Col 3 PROPOSED 18m LIGHTING COLUMN

Col 4 PROPOSED 25m LIGHTING COLUMN

SITE SERVICES LEGEND

PROPOSED LV LIGHTING DUCTING

PROPOSED LV LIGHTING DUCTING



REV	DESCRIPTION	DATE
STAGE 2A		

THESE DRAWINGS ARE TO BE USED TO FACILITATE AN UNDERSTANDING OF THE SCOPE AND CONTENT OF THE WORKS AND FOR PRICING PURPOSES. THE DRAWINGS ARE SUBJECT TO THE CONTRACTORS DETAILED DESIGN FOLLOWING THE DESIGN INTENT IN THE PERFORMANCE SPECIFICATIONS. THE DRAWINGS ARE NOT TO BE USED AS THE BASIS FOR CONSTRUCTION.

JOB DESCRIPTION: MULLINGAR REGIONAL SPORTS COMPLEX ROBINSTOWN, MULLINGAR

DWG TITLE: SITE LIGHTING LAYOUT SHEET 1 OF 2

SCALE: 1:500	DRAWN BY: *	U/C ENG: PMcC	DATE: JUNE '25
DRAWING No. MRSCB-PMC-SK-E-R-301	REVISION: -		



MRSC ROBINSTOWN Ionad Spóirt Réigiúnach an Mhuilinn Chearr Mullingar Regional Sports Complex