

Westmeath County Council

# Athlone Castle

Interpretation, Exhibition & Visitor Facilities

Stage iib - Part 8 Planning Application | Woods PS Drawings

24.07.25



# Contents

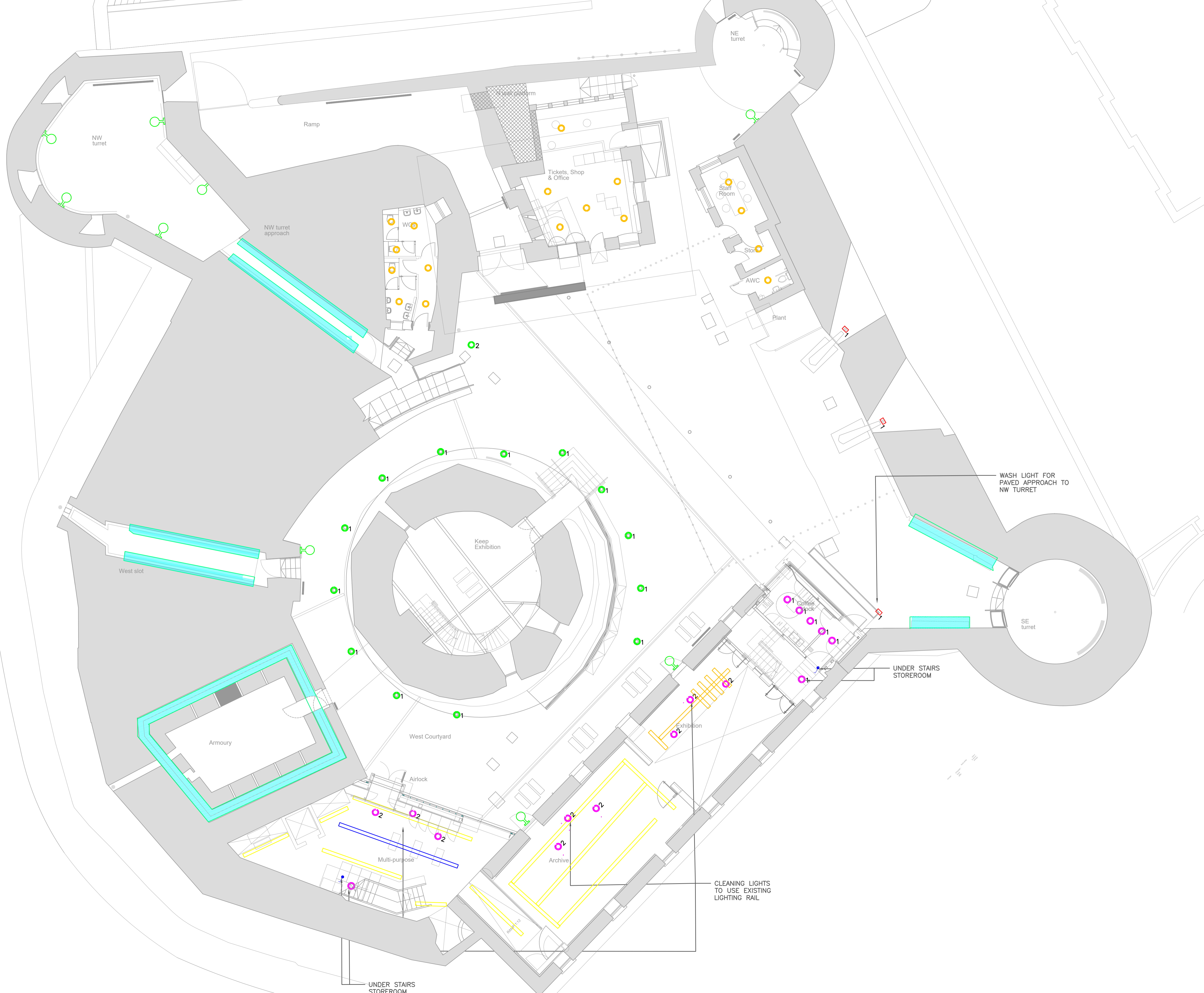
## WoodsPS

Abbey House, 19 Grove Island, Corbally, Limerick. T. 061513634 E.  
info@woodsps.com



### DOCUMENT ISSUE SHEET

Document No.	Document Name	Scale	Size
E-100	LIGHTING SERVICES - GROUND FLOOR	1:100	A1
E-101	LIGHTING SERVICES - FIRST FLOOR	1:100	A1
E-200	EMERGENCY SERVICES - GROUND FLOOR	1:100	A1
E-201	EMERGENCY SERVICES - FIRST FLOOR	1:100	A1
E-400	SECURITY SERVICES - GROUND FLOOR	1:100	A1
E-401	SECURITY SERVICES - FIRST FLOOR	1:100	A1



**SAFETY, HEALTH & ENVIRONMENTAL INFORMATION**

IN ADDITION TO THE HAZARDS / RISKS NORMALLY ASSOCIATED WITH THE TYPES OF WORK DETAILED ON THIS DRAWING, NOTE THE FOLLOWING:

**SIGNIFICANT RESIDUAL RISKS:**  
 1. SERVICES AT HIGH LEVEL (WITHIN CEILINGS, VOIDS ETC.) - INJURY DUE TO RISK OF FALLING  
 2. WORKING IN CONFINED SPACES - CLAUSTROPHOBIA, INJURY DUE TO SPACE RESTRICTIONS.

**ACTION TO BE TAKE.:**  
 1. INSTALLER TO ABIDE BY THE "WORKING AT HEIGHT REGULATIONS" AND USE OF THE CORRECT LIFTING PLANT, SUPPORT EQUIPMENT AND PPE.  
 2. USE OF THE CORRECT PPE AND PREFERABLY WORK WITH ANOTHER COLLEAGUE AT ALL TIMES.








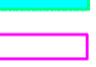




**DIMENSIONS:**  
 FIGURED DIMENSIONS TO BE TAKEN IN PREFERENCE TO SCALED DIMENSIONS. ALL DIMENSIONS ARE TO BE VERIFIED ON SITE PRIOR TO WORK COMMENCING.

**DISCREPANCIES:**  
 ANY DISCREPANCY IS TO BE REFERRED TO CONSULTANT BEFORE PROCEEDING.

**COPYRIGHT:**  
 THIS DRAWING IS ISSUED ON THE CONDITION THAT IT IS NOT COPIED OR DISCLOSED TO ANY OTHER UNAUTHORISED PERSON WITHOUT THE PRIOR CONSENT OF "WOODSPS".

**RELATED DOCUMENTS:**  
 THIS DRAWING SHALL BE READ IN CONJUNCTION WITH THE WRITTEN SPECIFICATION WHERE APPROPRIATE.

**LEGEND**

-  1 - RECESSED LED DOWN LIGHT
-  2 - CLEANING DOWN LIGHT
-  3 - RECESSED CLEANING LIGHT
-  1 - EXISTING EXTERNAL WALL DOWN LIGHT
-  1 - RECESSED SPOT LIGHT
-  2 - COURTYARD LIGHTPOLE WITH EMERGENCY LIGHTING
-  - EXISTING LIGHTING TO BE RETAINED
-  1 - LOW LEVEL WASH LIGHT
-  - EXTERNAL LED LIGHTING
-  - INTERNAL LED LIGHTING
-  - EXISTING SUSPENDED LIGHTING TRACK
-  - LIGHT SWITCH

WASH LIGHT FOR PAVED APPROACH TO NW TURRET

UNDER STAIRS STOREROOM

CLEANING LIGHTS TO USE EXISTING LIGHTING RAIL



Rev	Description	Date	Drn	Chk
P-01	PLANNING ISSUE	24/07/25	SW	JC



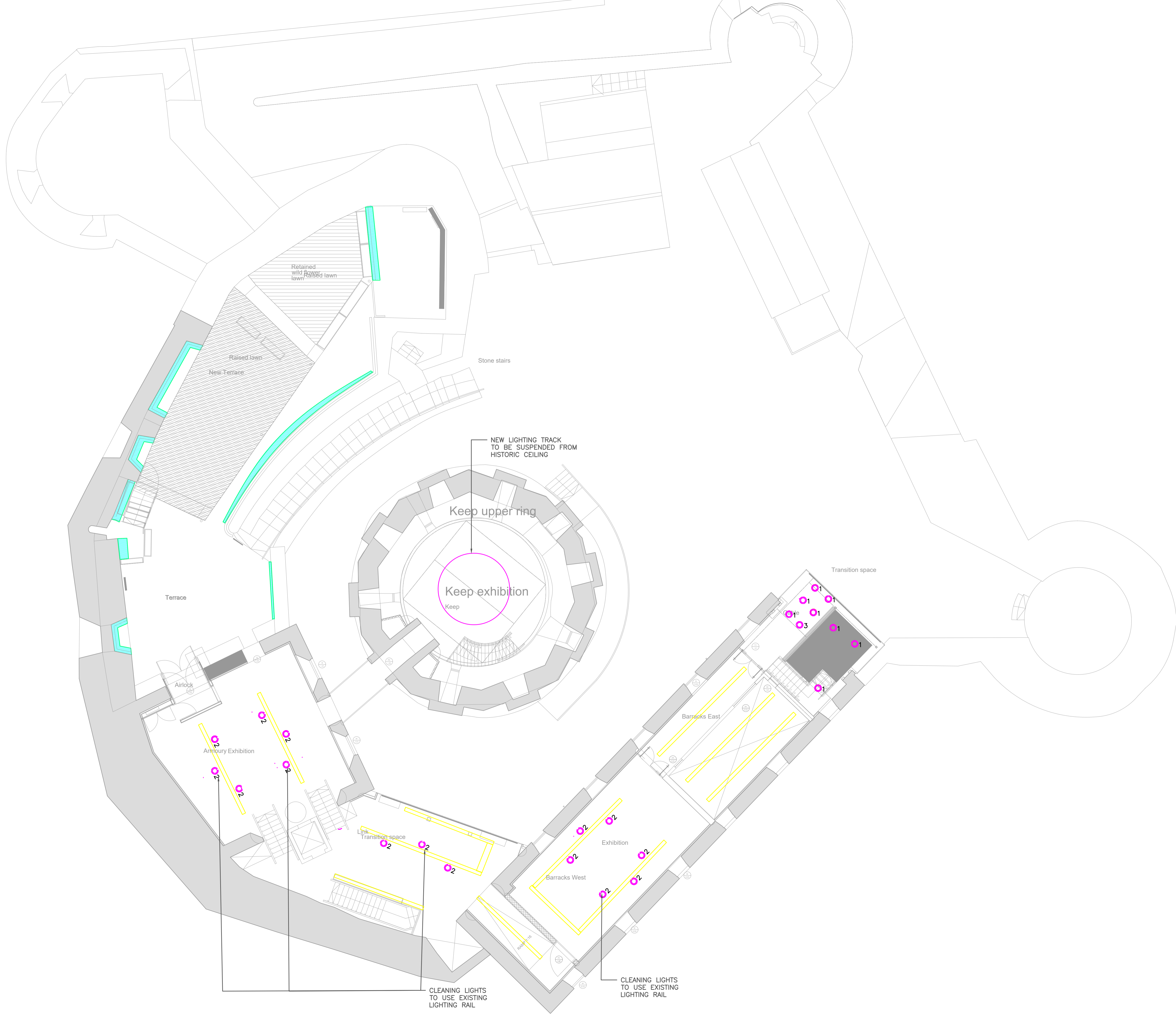
STATUS: **PLANNING**



PROJECT: **ATHLONE CASTLE**

DRAWING TITLE: **LIGHTING SERVICES - GROUND FLOOR**

SCALE (@ A1)	DRAWING NUMBER	REVISION
1:100	210-1000-WPS-XX-GF-DR-E-100	P-01



**SAFETY, HEALTH & ENVIRONMENTAL INFORMATION**

IN ADDITION TO THE HAZARDS / RISKS NORMALLY ASSOCIATED WITH THE TYPES OF WORK DETAILED ON THIS DRAWING, NOTE THE FOLLOWING:

**SIGNIFICANT RESIDUAL RISKS:**  
 1. SERVICES AT HIGH LEVEL (WITHIN CEILINGS, VOIDS ETC.) - INJURY DUE TO RISK OF FALLING  
 2. WORKING IN CONFINED SPACES - CLAUSTROPHOBIA, INJURY DUE TO SPACE RESTRICTIONS.

**ACTION TO BE TAKE.:**  
 1. INSTALLER TO ABIDE BY THE "WORKING AT HEIGHT REGULATIONS" AND USE OF THE CORRECT LIFTING PLANT, SUPPORT EQUIPMENT AND PPE.  
 2. USE OF THE CORRECT PPE AND PREFERABLY WORK WITH ANOTHER COLLEAGUE AT ALL TIMES.













**DIMENSIONS**  
 FIGURED DIMENSIONS TO BE TAKEN IN PREFERENCE TO SCALED DIMENSIONS. ALL DIMENSIONS ARE TO BE VERIFIED ON SITE PRIOR TO WORK COMMENCING.

**DISCREPANCIES**  
 ANY DISCREPANCY IS TO BE REFERRED TO CONSULTANT BEFORE PROCEEDING.

**COPYRIGHT**  
 THIS DRAWING IS ISSUED ON THE CONDITION THAT IT IS NOT COPIED OR DISCLOSED TO ANY OTHER UNAUTHORISED PERSON WITHOUT THE PRIOR CONSENT OF "WOODSPS".

**RELATED DOCUMENTS**  
 THIS DRAWING SHALL BE READ IN CONJUNCTION WITH THE WRITTEN SPECIFICATION WHERE APPROPRIATE

**LEGEND**

-  1 - RECESSED LED DOWN LIGHT
-  2 - CLEANING DOWN LIGHT
-  3 - RECESSED CLEANING LIGHT
-  1 - EXISTING EXTERNAL WALL DOWN LIGHT
-  2 - RECESSED SPOT LIGHT
-  2 - COURTYARD LIGHTPOLE WITH EMERGENCY LIGHTING
-  - EXISTING LIGHTING TO BE RETAINED
-  1 - LOW LEVEL WASH LIGHT
-  - EXTERNAL LED LIGHTING
-  - INTERNAL LED LIGHTING
-  - EXISTING SUSPENDED LIGHTING TRACK
-  - LIGHT SWITCH



Rev	Description	Date	Drn	Chk
P-01	PLANNING ISSUE	24/07/25	SW	JC



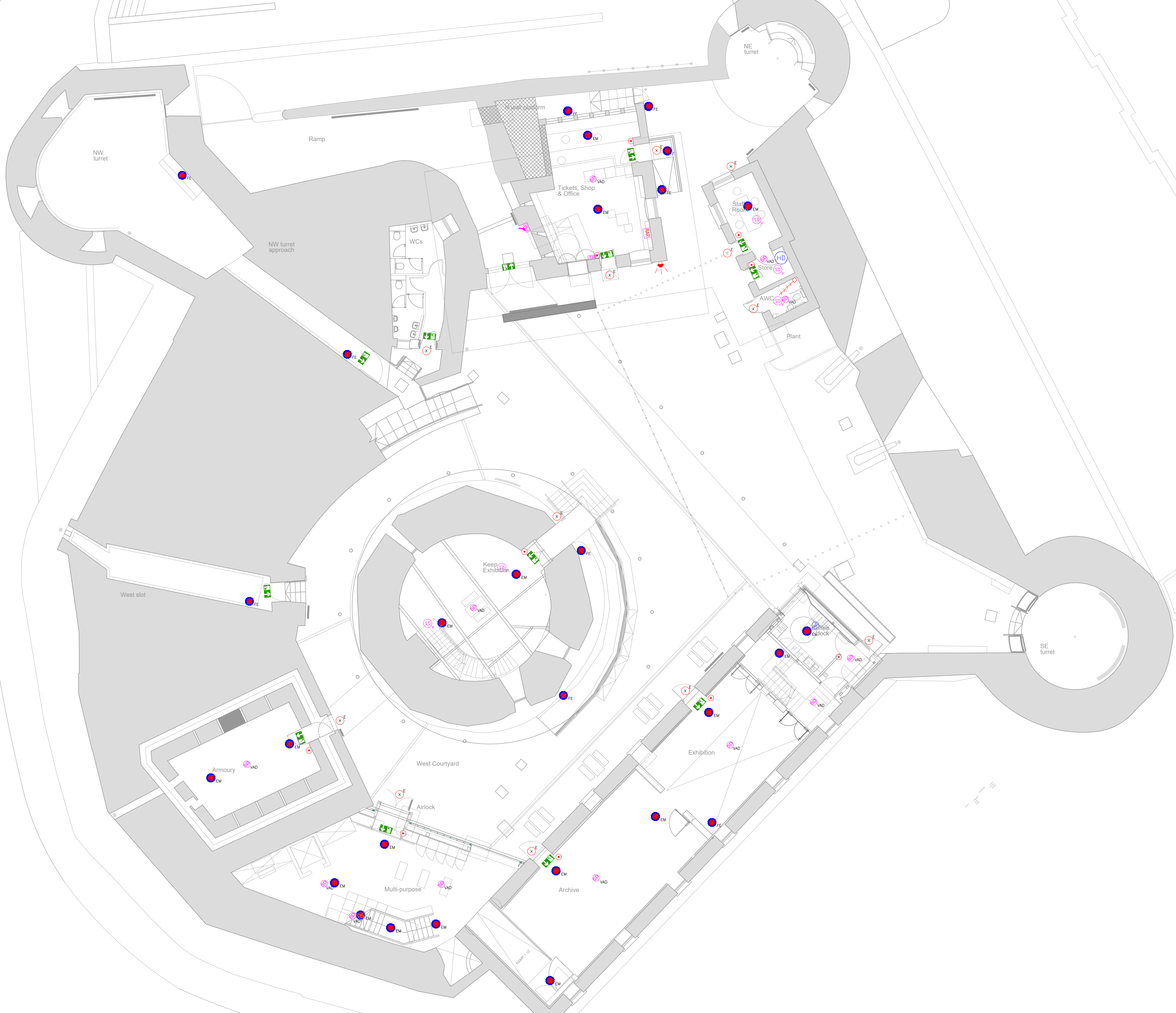
STATUS: **PLANNING**



PROJECT: **ATHLONE CASTLE**

DRAWING TITLE: **LIGHTING SERVICES - FIRST FLOOR**

SCALE (@ A1)	DRAWING NUMBER	REVISION
1:100	210-1000-WPS-XX-FF-DR-E-101	P-01



**SAFETY, HEALTH & ENVIRONMENTAL INFORMATION**

IN ADDITION TO THE HAZARDS / RISKS NORMALLY ASSOCIATED WITH THE TYPES OF WORK DETAILED ON THIS DRAWING, NOTE THE FOLLOWING:

SIGNIFICANT RESIDUAL RISKS:  
 1. SERVICES AT HIGH LEVEL (WITHIN CEILINGS, VOIDS ETC.) - INJURY DUE TO RISK OF FALLING  
 2. WORKING IN CONFINED SPACES - CLAUSTROPHOBIA, INJURY DUE TO SPACE RESTRICTIONS.

ACTION TO BE TAKE:  
 1. INSTALLER TO ABIDE BY THE "WORKING AT HEIGHT REGULATIONS" AND USE OF THE CORRECT LIFTING PLANT, SUPPORT EQUIPMENT AND PPE.  
 2. USE OF THE CORRECT PPE AND PREFERABLY WORK WITH ANOTHER COLLEAGUE AT ALL TIMES.

DIMENSIONS  
 FIGURED DIMENSIONS TO BE TAKEN IN PREFERENCE TO SCALED DIMENSIONS. ALL DIMENSIONS ARE TO BE VERIFIED ON SITE PRIOR TO WORK COMMENCING.

DISCREPANCIES  
 ANY DISCREPANCY IS TO BE REFERRED TO CONSULTANT BEFORE PROCEEDING.

COPYRIGHT  
 THIS DRAWING IS ISSUED ON THE CONDITION THAT IT IS NOT COPIED OR DISCLOSED TO ANY OTHER UNAUTHORISED PERSON WITHOUT THE PRIOR CONSENT OF "WOODSPS".

RELATED DOCUMENTS  
 THIS DRAWING SHALL BE READ IN CONJUNCTION WITH THE WRITTEN SPECIFICATION WHERE APPROPRIATE

**LEGEND**

- SMOKE DETECTOR
- HEAT DETECTOR
- I/O HARDWIRE SWITCH
- EXTERNAL SOUNDER
- REFUGE ALARM OUT STATION
- FIRE ALARM REPEATER PANEL
- EXIT SIGN
- EMERGENCY DOWN LIGHT
- EMERGENCY FROGEYE LIGHT
- EXTERNAL BULKHEAD
- VOID DETECTOR
- BRAKE GLASS UNIT
- REFUGE ALARM PANEL
- DISABLE ALARM PULL CORD
- DISABLE ALARM OVER DOOR INDICATOR
- DISABLE ALARM RESET
- FIREMANS SWITCH
- FIRE ALARM PANEL
- DISABLED ALARM PANEL



P-01	PLANNING ISSUE	24/07/25	SW	JC
Rev	Description	Date	Drn	Chk



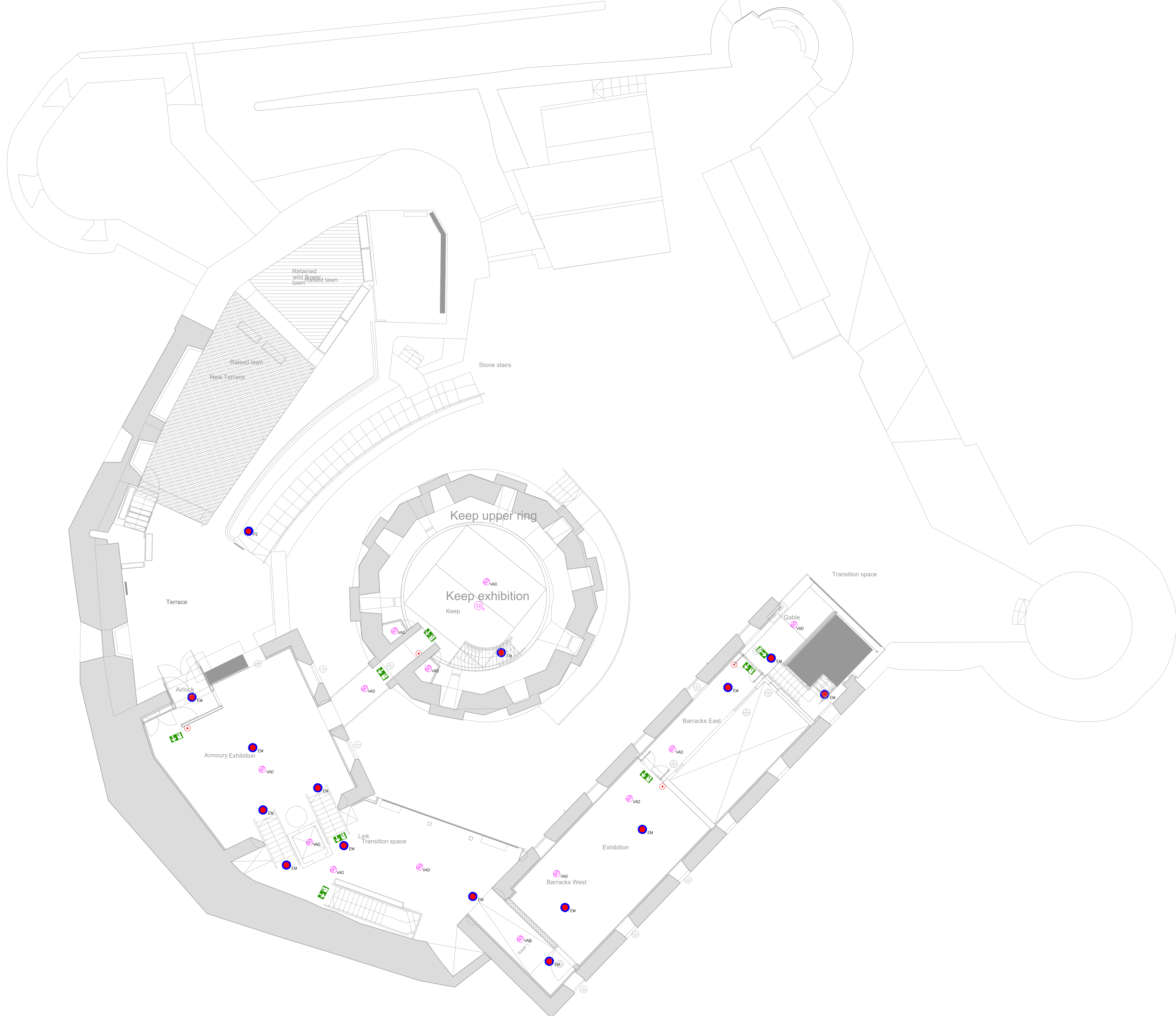
STATUS: **PLANNING**



PROJECT: **ATHLONE CASTLE**

DRAWING TITLE: **EMERGENCY SERVICES - GROUND FLOOR**

SCALE (@ A1)	DRAWING NUMBER	REVISION:
1:100	210-1000-WPS-XX-GF-DR-E-200	P-01



**SAFETY, HEALTH & ENVIRONMENTAL INFORMATION**

IN ADDITION TO THE HAZARDS / RISKS NORMALLY ASSOCIATED WITH THE TYPES OF WORK DETAILED ON THIS DRAWING, NOTE THE FOLLOWING:

**SIGNIFICANT RESIDUAL RISKS:**  
 1. SERVICES AT HIGH LEVEL (WITHIN CEILINGS, VOIDS ETC.) - INJURY DUE TO RISK OF FALLING  
 2. WORKING IN CONFINED SPACES - CLAUSTROPHOBIA, INJURY DUE TO SPACE RESTRICTIONS.

**ACTION TO BE TAKE.:**  
 1. INSTALLER TO ABIDE BY THE "WORKING AT HEIGHT REGULATIONS" AND USE OF THE CORRECT LIFTING PLANT, SUPPORT EQUIPMENT AND PPE.  
 2. USE OF THE CORRECT PPE AND PREFERABLY WORK WITH ANOTHER COLLEAGUE AT ALL TIMES.









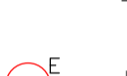









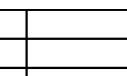
**DIMENSIONS**  
 FIGURED DIMENSIONS TO BE TAKEN IN PREFERENCE TO SCALED DIMENSIONS. ALL DIMENSIONS ARE TO BE VERIFIED ON SITE PRIOR TO WORK COMMENCING.

**DISCREPANCIES**  
 ANY DISCREPANCY IS TO BE REFERRED TO CONSULTANT BEFORE PROCEEDING.

**COPYRIGHT**  
 THIS DRAWING IS ISSUED ON THE CONDITION THAT IT IS NOT COPIED OR DISCLOSED TO ANY OTHER UNAUTHORISED PERSON WITHOUT THE PRIOR CONSENT OF "WOODSPS".

**RELATED DOCUMENTS**  
 THIS DRAWING SHALL BE READ IN CONJUNCTION WITH THE WRITTEN SPECIFICATION WHERE APPROPRIATE

**LEGEND**

-  - SMOKE DETECTOR
-  - HEAT DETECTOR
-  - I/O HARDWIRE SWITCH
-  - EXTERNAL SOUNDER
-  - REFUGE ALARM OUT STATION
-  - FIRE ALARM REPEATER PANEL
-  - EXIT SIGN
-  - EMERGENCY DOWN LIGHT
-  - EMERGENCY FROGEYE LIGHT
-  - EXTERNAL BULKHEAD
-  - VOID DETECTOR
-  - BRAKE GLASS UNIT
-  - REFUGE ALARM PANEL
-  - DISABLE ALARM PULL CORD
-  - DISABLE ALARM OVER DOOR INDICATOR
-  - DISABLE ALARM RESET
-  - FIREMANS SWITCH
-  - FIRE ALARM PANEL
-  - DISABLED ALARM PANEL



Rev	Description	Date	Drn	Chk
P-01	PLANNING ISSUE	24/07/25	SW	JC



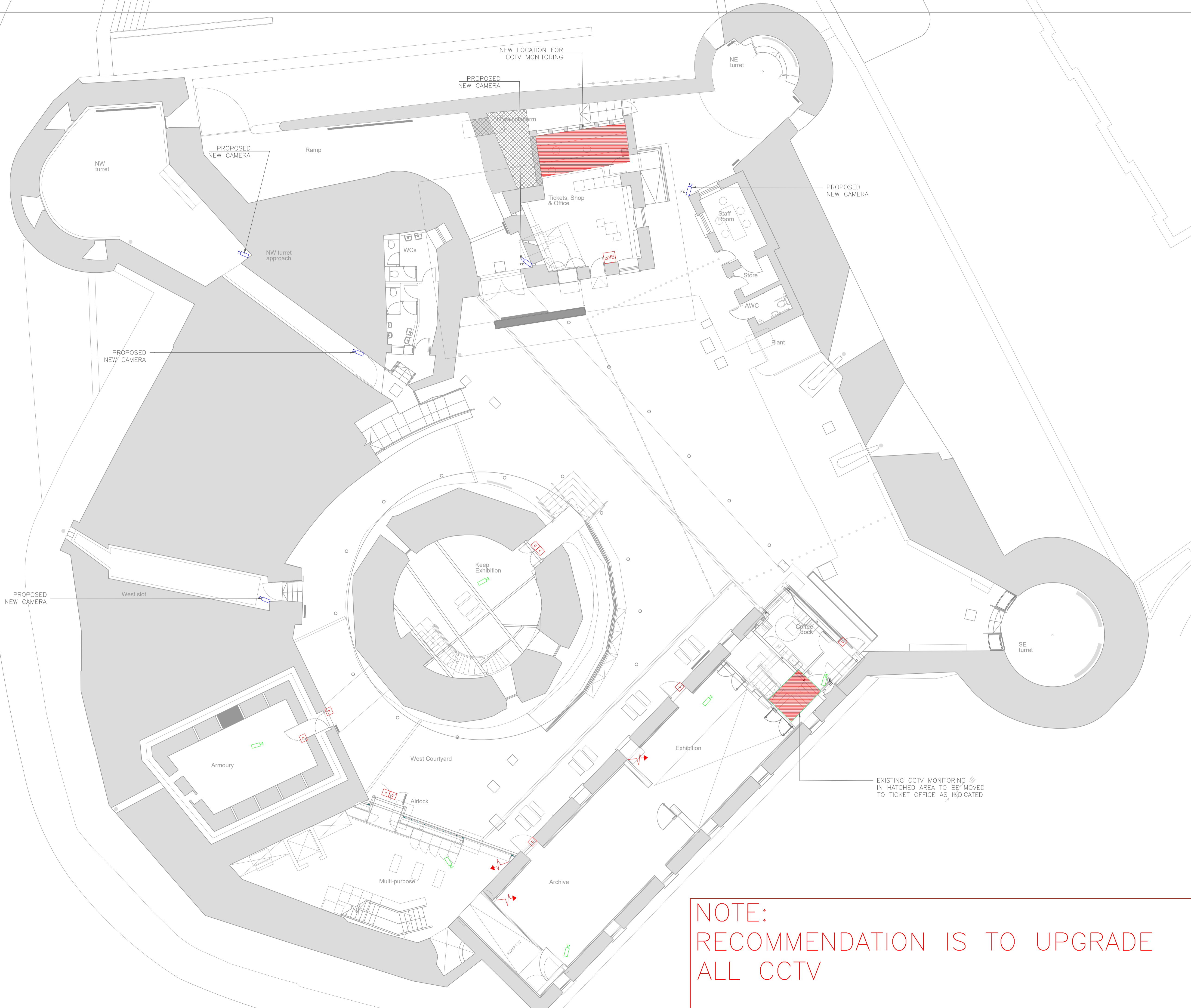
STATUS: **PLANNING**

CLIENT: **GALMSTROP ARCHITECTS**

PROJECT: **ATHLONE CASTLE**

DRAWING TITLE: **EMERGENCY SERVICES - FIRST FLOOR**

SCALE (@ A1)	DRAWING NUMBER	REVISION:
1:100	210-1000-WPS-XX-FF-DR-E-201	P-01



NOTE:  
RECOMMENDATION IS TO UPGRADE  
ALL CCTV

**SAFETY, HEALTH & ENVIRONMENTAL INFORMATION**

IN ADDITION TO THE HAZARDS / RISKS NORMALLY ASSOCIATED WITH THE TYPES OF WORK DETAILED ON THIS DRAWING, NOTE THE FOLLOWING:

**SIGNIFICANT RESIDUAL RISKS:**

- SERVICES AT HIGH LEVEL (WITHIN CEILINGS, VOIDS ETC.) - INJURY DUE TO RISK OF FALLING
- WORKING IN CONFINED SPACES - CLAUSTROPHOBIA, INJURY DUE TO SPACE RESTRICTIONS.

**ACTION TO BE TAKEN:**

- INSTALLER TO ABIDE BY THE "WORKING AT HEIGHT REGULATIONS" AND USE OF THE CORRECT LIFTING PLANT, SUPPORT EQUIPMENT AND PPE.
- USE OF THE CORRECT PPE AND PREFERABLY WORK WITH ANOTHER COLLEAGUE AT ALL TIMES.

**DIMENSIONS:**  
FIGURED DIMENSIONS TO BE TAKEN IN PREFERENCE TO SCALED DIMENSIONS. ALL DIMENSIONS ARE TO BE VERIFIED ON SITE PRIOR TO WORK COMMENCING.

**DISCREPANCIES:**  
ANY DISCREPANCY IS TO BE REFERRED TO CONSULTANT BEFORE PROCEEDING.

**COPYRIGHT:**  
THIS DRAWING IS ISSUED ON THE CONDITION THAT IT IS NOT COPIED OR DISCLOSED TO ANY OTHER UNAUTHORISED PERSON WITHOUT THE PRIOR CONSENT OF "WOODSPS".

**RELATED DOCUMENTS:**  
THIS DRAWING SHALL BE READ IN CONJUNCTION WITH THE WRITTEN SPECIFICATION WHERE APPROPRIATE

**LEGEND**

- BKP - BURGLAR ALARM KEYPAD
- C - WINDOW / DOOR CONTACTS
- ▲ - PASSIVE INFRARED SENSOR
- [ ] - EXTERNAL CCTV
- [ ] FE - EXTERNAL FISHEYE CCTV
- [ ] - INTERNAL CCTV
- [ ] FE - INTERNAL FISHEYE CCTV



Rev	Description	Date	Drn	Chk
P-01	PLANNING ISSUE	24/07/25	SW	JC



STATUS: **PLANNING**



PROJECT: **ATHLONE CASTLE**

DRAWING TITLE: **SECURITY SERVICES - GROUND FLOOR**

SCALE (@ A1)	DRAWING NUMBER	REVISION
1:100	210-1000-WPS-XX-GF-DR-E-400	P-01

**SAFETY, HEALTH & ENVIRONMENTAL INFORMATION**

IN ADDITION TO THE HAZARDS / RISKS NORMALLY ASSOCIATED WITH THE TYPES OF WORK DETAILED ON THIS DRAWING, NOTE THE FOLLOWING:

**SIGNIFICANT RESIDUAL RISKS:**  
 1. SERVICES AT HIGH LEVEL (WITHIN CEILINGS, VOIDS ETC.) - INJURY DUE TO RISK OF FALLING  
 2. WORKING IN CONFINED SPACES - CLAUSTROPHOBIA, INJURY DUE TO SPACE RESTRICTIONS.

**ACTION TO BE TAKE.:**  
 1. INSTALLER TO ABIDE BY THE "WORKING AT HEIGHT REGULATIONS" AND USE OF THE CORRECT LIFTING PLANT, SUPPORT EQUIPMENT AND PPE.  
 2. USE OF THE CORRECT PPE AND PREFERABLY WORK WITH ANOTHER COLLEAGUE AT ALL TIMES.




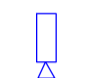

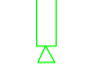

**DIMENSIONS**  
 FIGURED DIMENSIONS TO BE TAKEN IN PREFERENCE TO SCALED DIMENSIONS. ALL DIMENSIONS ARE TO BE VERIFIED ON SITE PRIOR TO WORK COMMENCING.

**DISCREPANCIES**  
 ANY DISCREPANCY IS TO BE REFERRED TO CONSULTANT BEFORE PROCEEDING.

**COPYRIGHT**  
 THIS DRAWING IS ISSUED ON THE CONDITION THAT IT IS NOT COPIED OR DISCLOSED TO ANY OTHER UNAUTHORISED PERSON WITHOUT THE PRIOR CONSENT OF "WOODSPS".

**RELATED DOCUMENTS**  
 THIS DRAWING SHALL BE READ IN CONJUNCTION WITH THE WRITTEN SPECIFICATION WHERE APPROPRIATE

**LEGEND**

-  - BURGLAR ALARM KEYPAD
-  - WINDOW / DOOR CONTACTS
-  - PASSIVE INFRARED SENSOR
-  - EXTERNAL CCTV
-  - EXTERNAL FISHEYE CCTV
-  - INTERNAL CCTV
-  - INTERNAL FISHEYE CCTV



Rev	Description	Date	Drn	Chk
P-01	PLANNING ISSUE	24/07/25	SW	JC



STATUS: **PLANNING**



PROJECT: **ATHLONE CASTLE**

DRAWING TITLE: **SECURITY SERVICES - FIRST FLOOR**

SCALE (@ A1)	DRAWING NUMBER	REVISION
1:100	210-1000-WPS-XX-FF-DR-E-01	P-01

**NOTE:**  
 RECOMMENDATION IS TO UPGRADE  
 ALL CCTV

