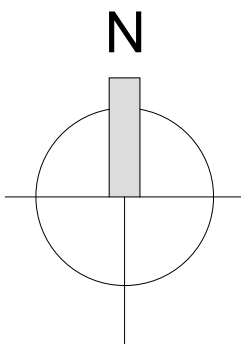


Canal
And
Banks



SITE LOCATION MAP

1:1000 @ A3

CYAL50334397

© National Mapping Division of Tailte Éireann.

SECTION 179A

REV.	DESCRIPTION.	DATE.	BY.

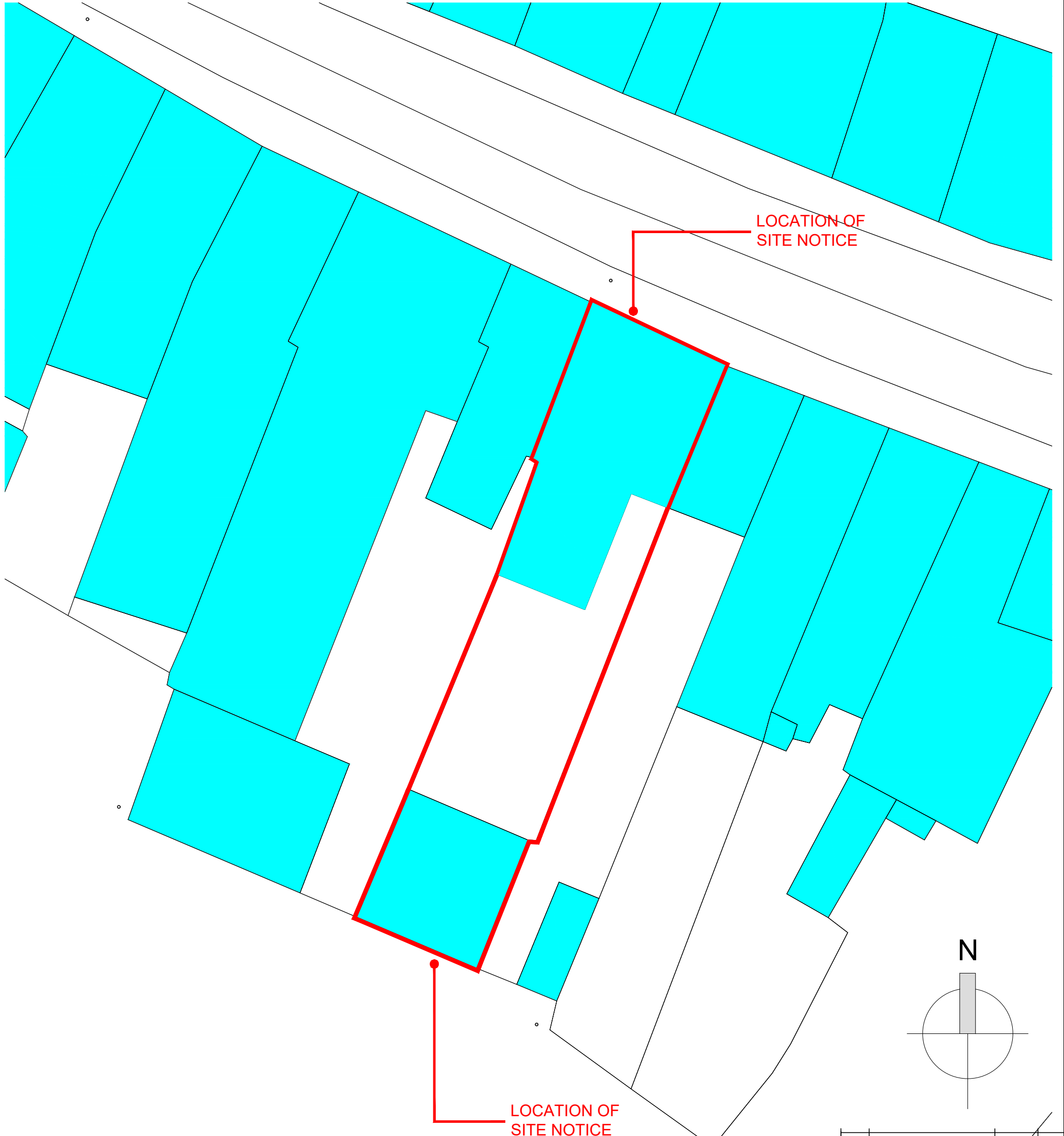
HOUSING CAPITAL
WESTMEATH COUNTY COUNCIL
CIVIC CENTRE, CHURCH ST.
ATHLONE, N37 P2T5
Phone: 0906442100
Web: www.westmeathcoco.ie

PROJECT:
36 CONNAUGHT STREET
ATHLONE, Co WESTMEATH

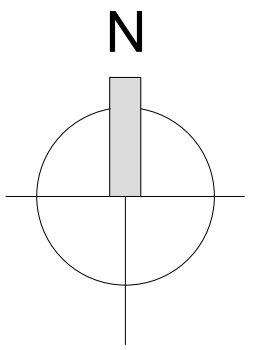
TITLE:
SITE LOCATION MAP

Scale: 1:1000@A3	Datum:	Date: AUG 23
Drawing No. 107a_001	Stage 179A	Revision
Surveyed	Drawn	Checked
	JH	PWC
		Approved
		PJH

FILE NAME AND DIRECTORY:
Site Location Plan_NEW.dwg
H-CAPITAL HOUSING DESIGN TEAM\1-Capital Scheme\107a 36 Connaught SRDRAWINGS\3. Part 8 -Planning\2. DWG\10000 Site drawings



Car Park



LOCATION OF SITE NOTICE

LOCATION OF SITE NOTICE

EXISTING SITE PLAN
1:200 @ A3

CYAL50334397
© National Mapping Division of Tailte Éireann.

SECTION 179A

REV.	DESCRIPTION.	DATE.	BY.

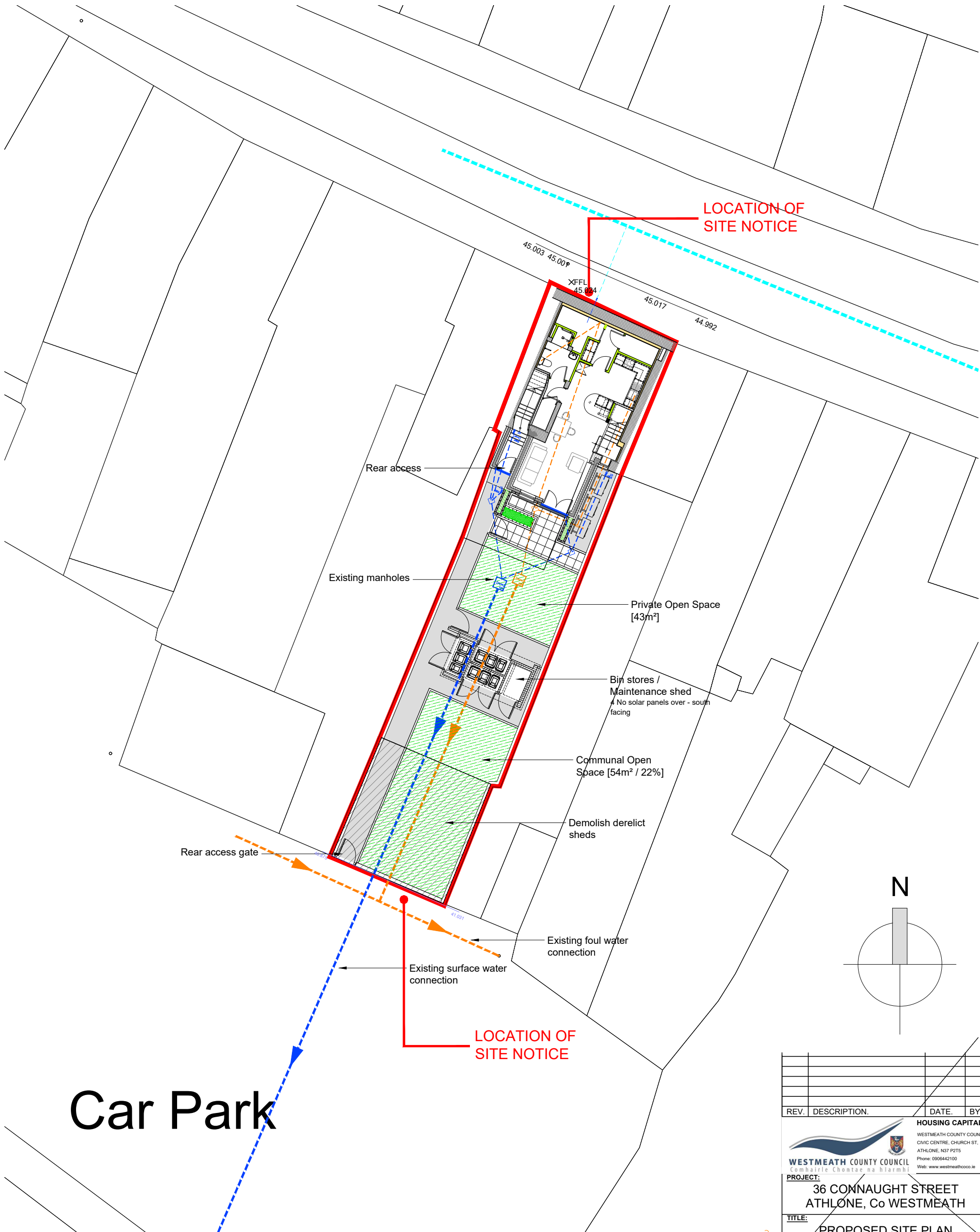
HOUSING CAPITAL
WESTMEATH COUNTY COUNCIL
CIVIC CENTRE, CHURCH ST.
ATHLONE, N37 P2T5
Phone: 0906442100
Web: www.westmeathcoco.ie

PROJECT:
36 CONNAUGHT STREET
ATHLONE, Co WESTMEATH

TITLE:
EXISTING SITE PLAN

Scale: 1:200@A3	Datum:	Date: AUG '23
Drawing No. 107a_002	Stage 179A	Revision
Surveyed	Drawn	Checked
	JH	PWC
Approved		PJH

FILE NAME AND DIRECTORY:
Site Location Plan_NEW.dwg
H\CAPITAL_HOUSING DESIGN TEAM\1-Capital Scheme\107a 36 Connaught St\DRAWINGS\3. Part 8 -Planning\2. DWG\10000 Site drawings



Car Park

PROPOSED SITE PLAN
1:200 @ A3

CYAL50334397
© National Mapping Division of Tailte Éireann.

SECTION 179A

REV.	DESCRIPTION	DATE	BY

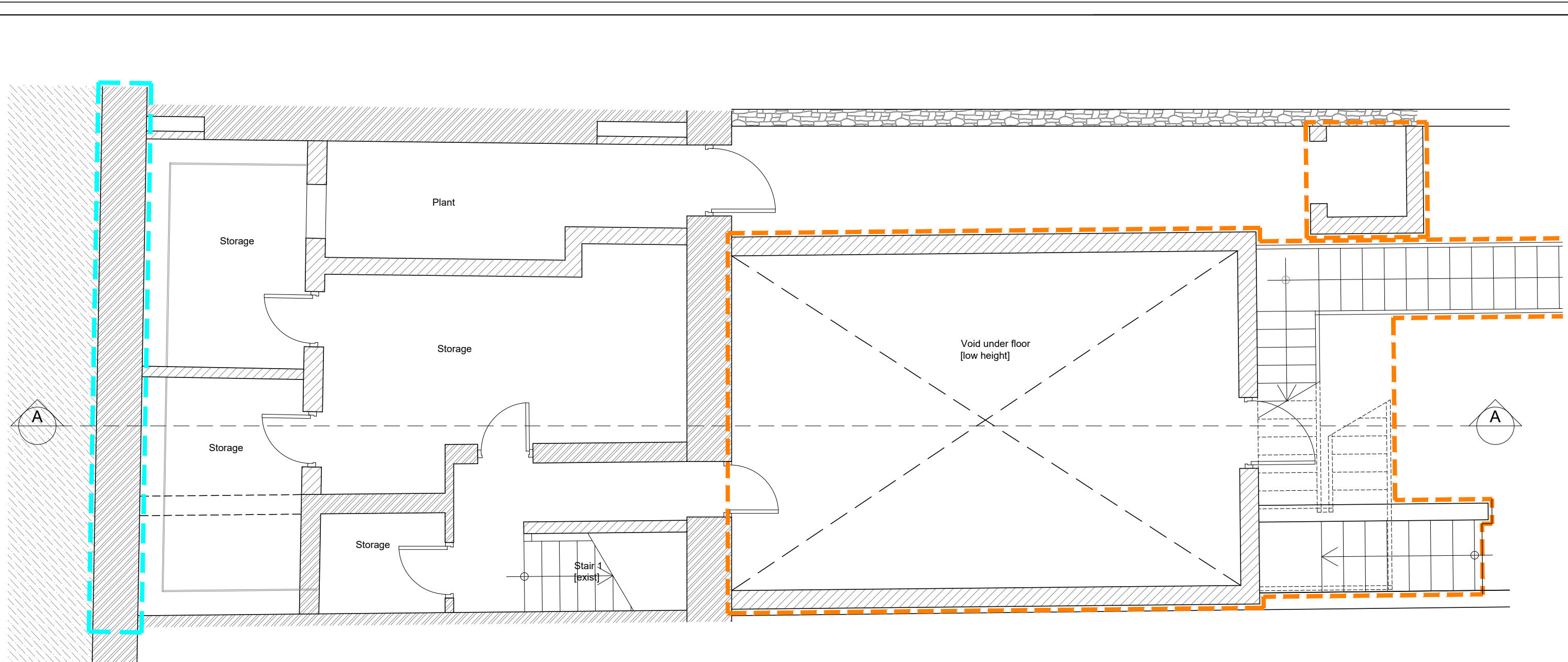
HOUSING CAPITAL
WESTMEATH COUNTY COUNCIL
CIVIC CENTRE, CHURCH ST.
ATHLONE, N37 P2T5
Phone: 0906442100
Web: www.westmeathcoco.ie

PROJECT:
36 CONNAUGHT STREET
ATHLONE, Co WESTMEATH

TITLE:
PROPOSED SITE PLAN

Scale: 1:200@A3	Datum:	Date: AUG '23
Drawing No. 107a_003	Stage 179A	Revision
Surveyed	Drawn	Checked
	JH	PWC
		Approved
		PJH

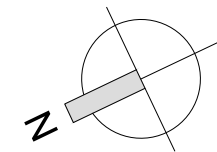
FILE NAME AND DIRECTORY:
Site Location Plan_NEW.dwg
H\CAPITAL_HOUSING DESIGN TEAM\1-Capital Scheme\107a 36 Connaught SKDRAWINGS\3. Part 8 -Planning\2. DWG\10000 Site drawings



-01: BASEMENT PLAN
1:50 @ A3

LEGEND

- - - • Protected [Retain and make good]
- - - • Demolish



SECTION 179A

REV.	DESCRIPTION.	DATE.	BY.

WESTMEATH COUNTY COUNCIL
Comhairle Chontae na hIarmhí

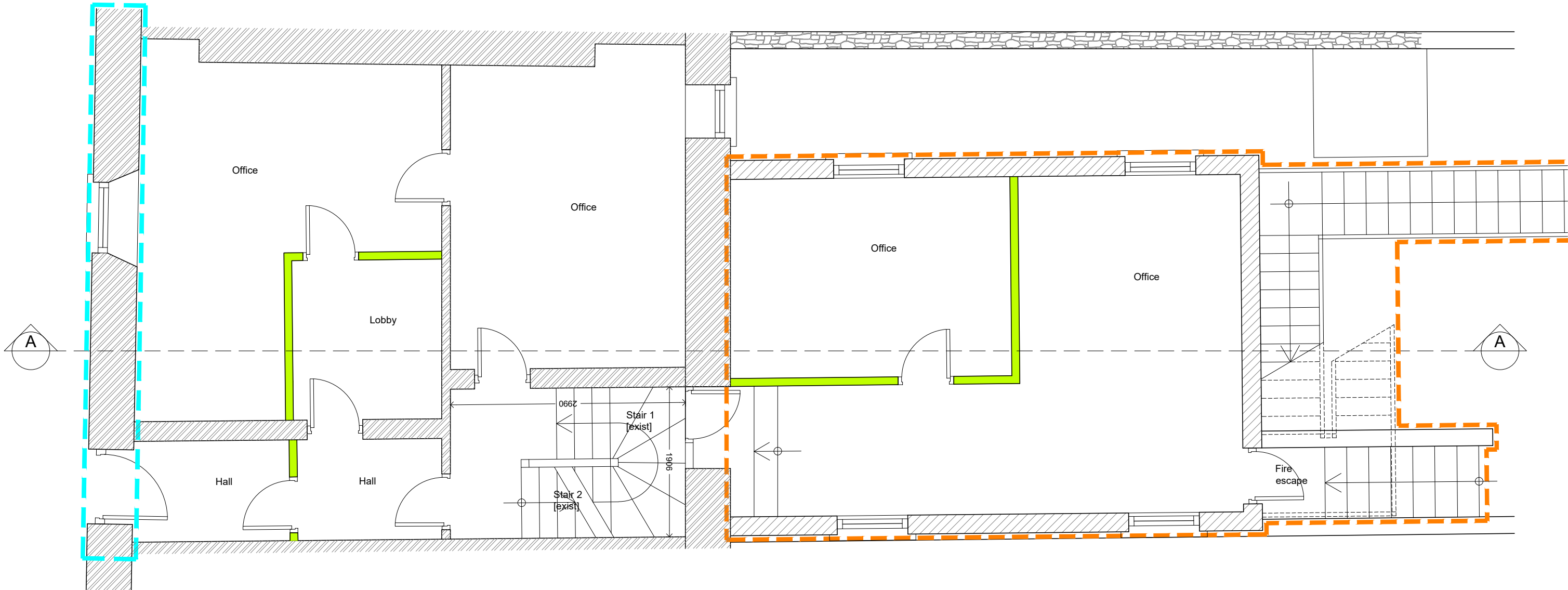
HOUSING CAPITAL
WESTMEATH COUNTY COUNCIL
CIVIC CENTRE, CHURCH ST.
ATHLONE, N37 P2T5
Phone: 0906442100
Web: www.westmeathcoco.ie

PROJECT:
**36 CONNAUGHT STREET
ATHLONE, Co WESTMEATH**

TITLE:
**EXISTING BASEMENT
FLOOR PLAN**

Scale: 1:50@A3	Datum: ITM	Date: AUG '23
Drawing No.	Stage	Revision
107a_EX-100	179A	
Surveyed	Drawn	Checked
JH	PWC	PH
Approved		

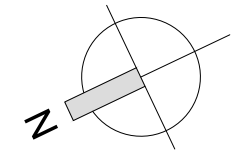
FILE NAME AND DIRECTORY:
36 EXISTING.dwg
H:\CAPITAL HOUSING DESIGN TEAM\1-Capital Schemes\107a 36 Connaught St\DRAWINGS\3. Part
8 -Planning\2. DWG\1000 General Arrangement



00: GROUND FLOOR PLAN
1:50 @ A3

LEGEND

- - - - • Protected [Retain and make good]
- - - - • Demolish



SECTION 179A

REV.	DESCRIPTION	DATE	BY

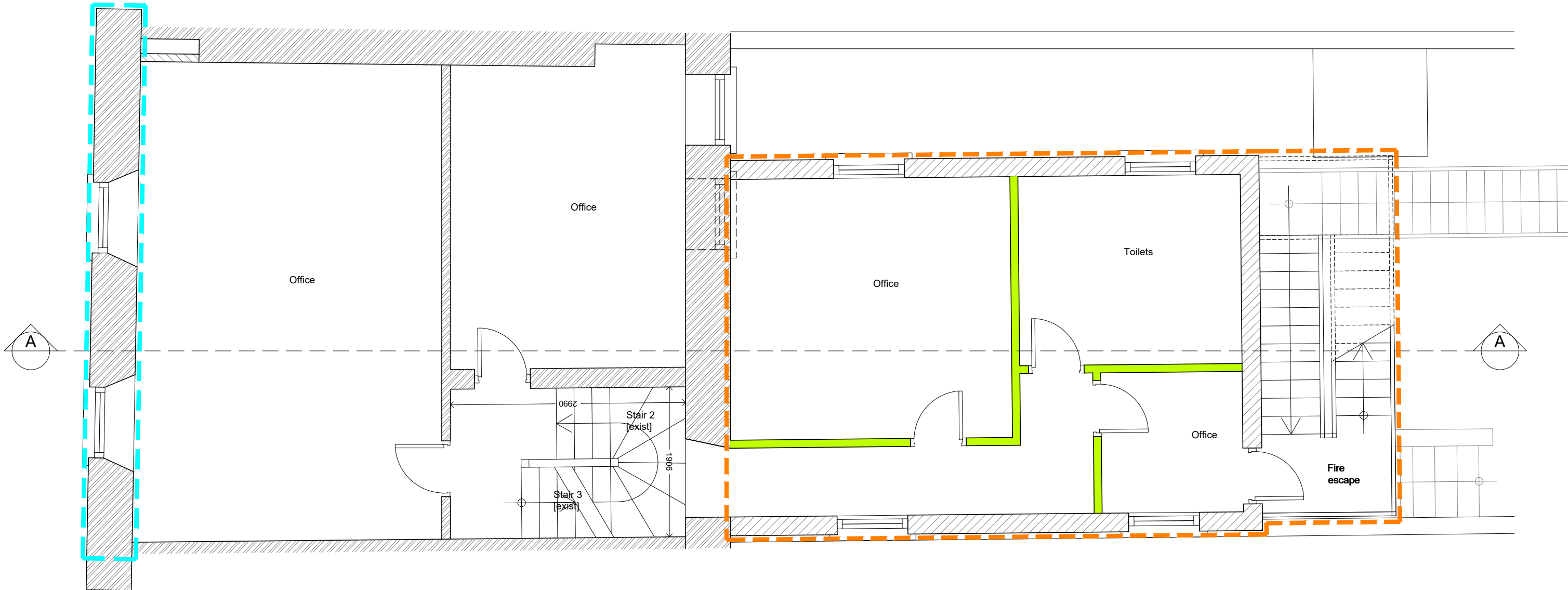
HOUSING CAPITAL
WESTMEATH COUNTY COUNCIL
 CIVIC CENTRE, CHURCH ST.
 ATHLONE, N37 P2T5
 Phone: 0906442100
 Web: www.westmeathcoco.ie

PROJECT:
**36 CONNAUGHT STREET
 ATHLONE, Co WESTMEATH**

TITLE:
**EXISTING GROUND
 FLOOR PLAN**

Scale: 1:50@A3	Datum: ITM	Date: AUG '23
Drawing No.	Stage	Revision
107a_EX-101	179A	
Surveyed	Drawn	Checked
JH	PWC	PH

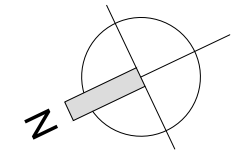
FILE NAME AND DIRECTORY:
 36 EXISTING.dwg
 H:\CAPITAL HOUSING DESIGN TEAM\1-Capital Schemes\107a 36 Connaught St\DRAWINGS\3. Part
 8 -Planning\2. DWG\1000 General Arrangement



01: FIRST FLOOR PLAN
1:50 @ A3

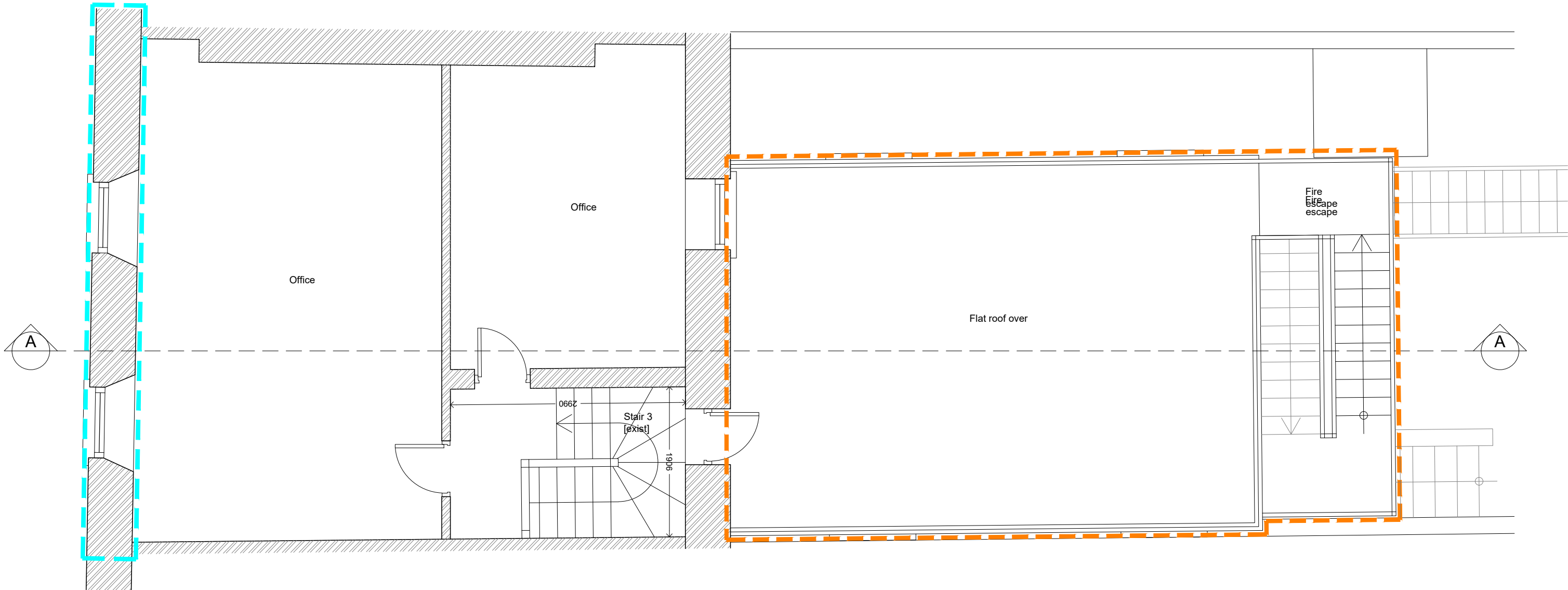
LEGEND

- - - - • Protected [Retain and make good]
- - - - • Demolish



SECTION 179A

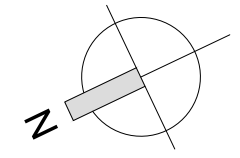
REV.	DESCRIPTION.	DATE.	BY.
<p>HOUSING CAPITAL WESTMEATH COUNTY COUNCIL CIVIC CENTRE, CHURCH ST. ATHLONE, N37 P2T5 Phone: 0906442100 Web: www.westmeathcoco.ie</p>			
<p>PROJECT: 36 CONNAUGHT STREET ATHLONE, Co WESTMEATH</p>			
<p>TITLE: EXISTING FIRST FLOOR PLAN</p>			
Scale: 1:50@A3	Datum: ITM	Date: AUG '23	
Drawing No.	Stage	Revision	
107a_EX-102	179A		
Surveyed	Drawn	Checked	Approved
	JH	PWC	PH
<p><small>FILE NAME AND DIRECTORY: 36 EXISTING.dwg H:\CAPITAL HOUSING DESIGN TEAM\1-Capital Schemes\107a 36 Connaught St\DRAWINGS\3. Part 8 -Planning\2. DWG\1000 General Arrangement</small></p>			



02: SECOND FLOOR PLAN
1:50 @ A3

LEGEND

- - - - • Protected [Retain and make good]
- - - - • Demolish



SECTION 179A

REV.	DESCRIPTION.	DATE.	BY.

HOUSING CAPITAL
WESTMEATH COUNTY COUNCIL
 CIVIC CENTRE, CHURCH ST.
 ATHLONE, N37 P2T5
 Phone: 0906442100
 Web: www.westmeathcoco.ie

PROJECT:
**36 CONNAUGHT STREET
 ATHLONE, Co WESTMEATH**

TITLE:
**EXISTING SECOND
 FLOOR PLAN**

Scale: 1:50@A3	Datum: ITM	Date: AUG '23
Drawing No.	Stage	Revision
107a_EX-103	179A	
Surveyed	Drawn	Checked
	JH	PWC
		PH

FILE NAME AND DIRECTORY:
 36 EXISTING.dwg
 H:\CAPITAL HOUSING DESIGN TEAM\1-Capital Schemes\107a 36 Connaught St\DRAWINGS\3. Part
 8 -Planning\2. DWG\1000 General Arrangement



EXISTING FRONT ELEVATION

1:50 @ A3

LEGEND

- - - - • Protected [Retain and make good]
- - - - • Demolish
- - - - • New Build
- - - - • 1Hr Fire Compartment

SECTION 179A

REV.	DESCRIPTION.	DATE.	BY.

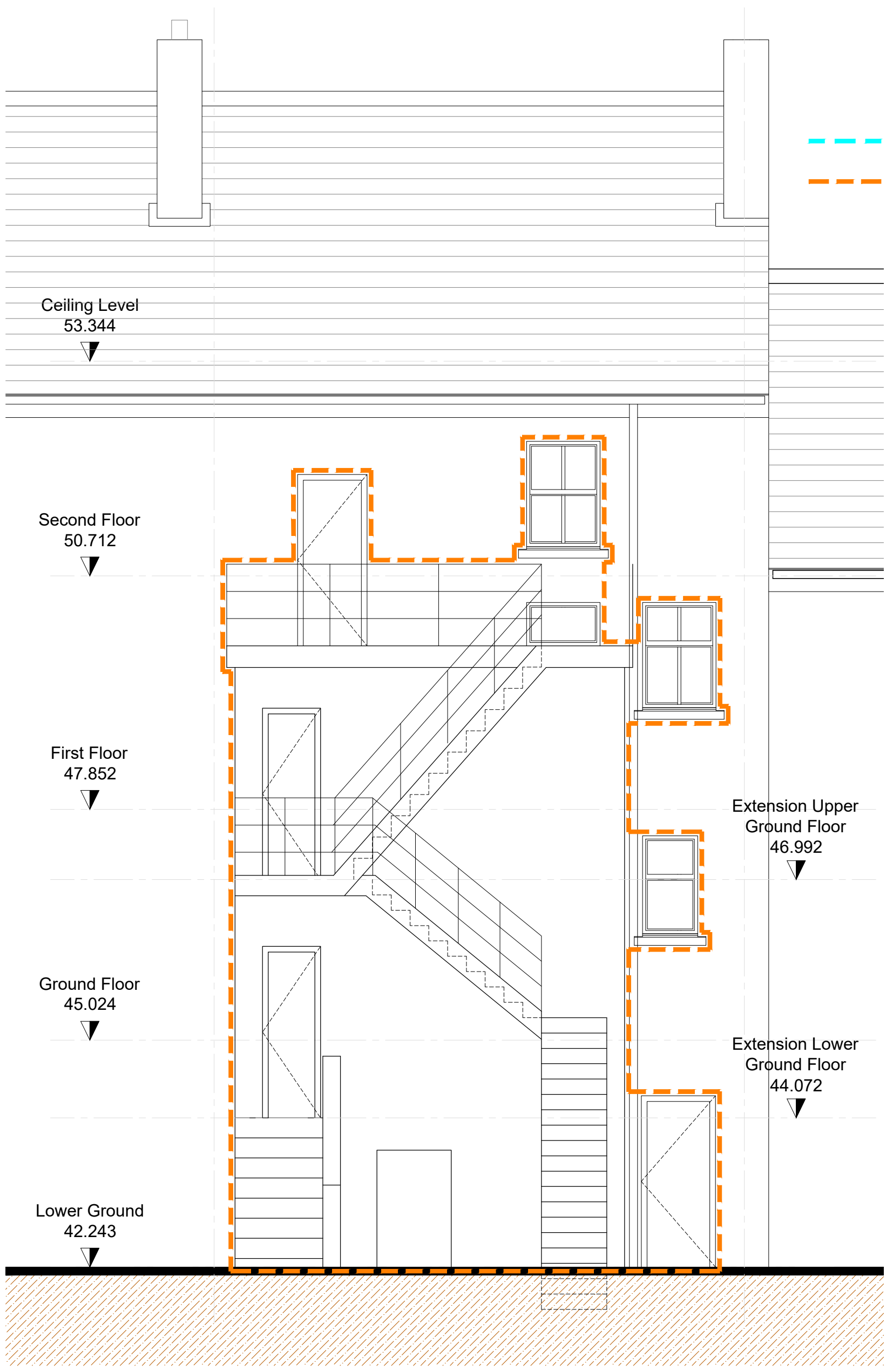
HOUSING CAPITAL
 WESTMEATH COUNTY COUNCIL
 CIVIC CENTRE, CHURCH ST.
 ATHLONE, N37 P2T5
 Phone: 0906442100
 Web: www.westmeathcoco.ie

PROJECT:
 36 CONNAUGHT STREET
 ATHLONE, Co WESTMEATH

TITLE:
 EXISTING FRONT ELEVATION

Scale: 1:50@A3	Datum:	Date: AUG '23
Drawing No. 107a_EX-200	Stage 179A	Revision
Surveyed	Drawn	Checked
	JH	PWC
		Approved
		PJH

FILE NAME AND DIRECTORY:
 36 EXISTING.dwg
 H-CAPITAL HOUSING DESIGN TEAM\1-Capital Schemes\107a 36 Connaught SKDRAWINGS\3. Part
 8 -Planning\2. DWG\1000 General Arrangement



LEGEND

- - - • Protected [Retain and make good]
- - - • Demolish

Ceiling Level
53.344

Second Floor
50.712

First Floor
47.852

Ground Floor
45.024

Lower Ground
42.243

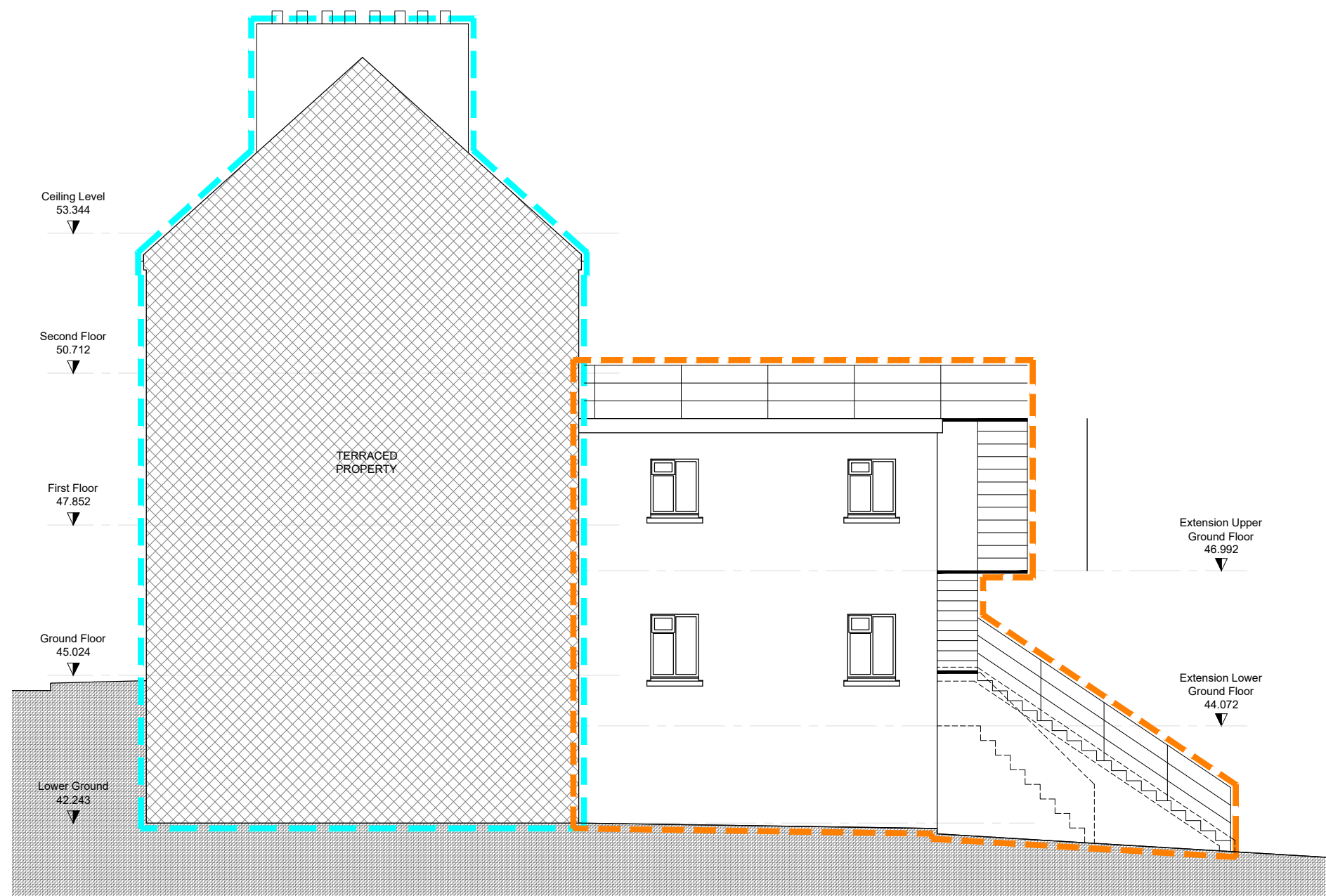
Extension Upper
Ground Floor
46.992

Extension Lower
Ground Floor
44.072

EXISTING REAR ELEVATION
1:50 @ A3

SECTION 179A

REV.	DESCRIPTION.	DATE.	BY.
WESTMEATH COUNTY COUNCIL <small>WESTMEATH COUNTY COUNCIL CIVIC CENTRE, CHURCH ST. ATHLONE, N37 P2T5 Phone: 0906442100 Web: www.westmeathcoco.ie</small>			
PROJECT: 36 CONNAUGHT STREET ATHLONE, Co WESTMEATH			
TITLE: EXISTING REAR ELEVATION			
Scale: 1:50@A3	Datum:	Date: AUG '23	
Drawing No. 107a_EX-201	Stage 179A	Revision	
Surveyed	Drawn	Checked	Approved
	JH	PWC	PJH
<small>FILE NAME AND DIRECTORY: 36 EXISTING.dwg H-CAPITAL HOUSING DESIGN TEAM\1-Capital Schemes\107a 36 Connaught SRDRAWINGS\3. Part 8 -Planning\2. DWG\1000 General Arrangement</small>			



SIDE ELEVATION
1:100 @ A3

LEGEND

- - - - • Protected [Retain and make good]
- - - - • Demolish

REV.	DESCRIPTION.	DATE.	BY.

HOUSING CAPITAL
 WESTMEATH COUNTY COUNCIL
 CIVIC CENTRE, CHURCH ST.
 ATHLONE, N37 P2T5
 Phone: 0906442100
 Web: www.westmeathcoco.ie

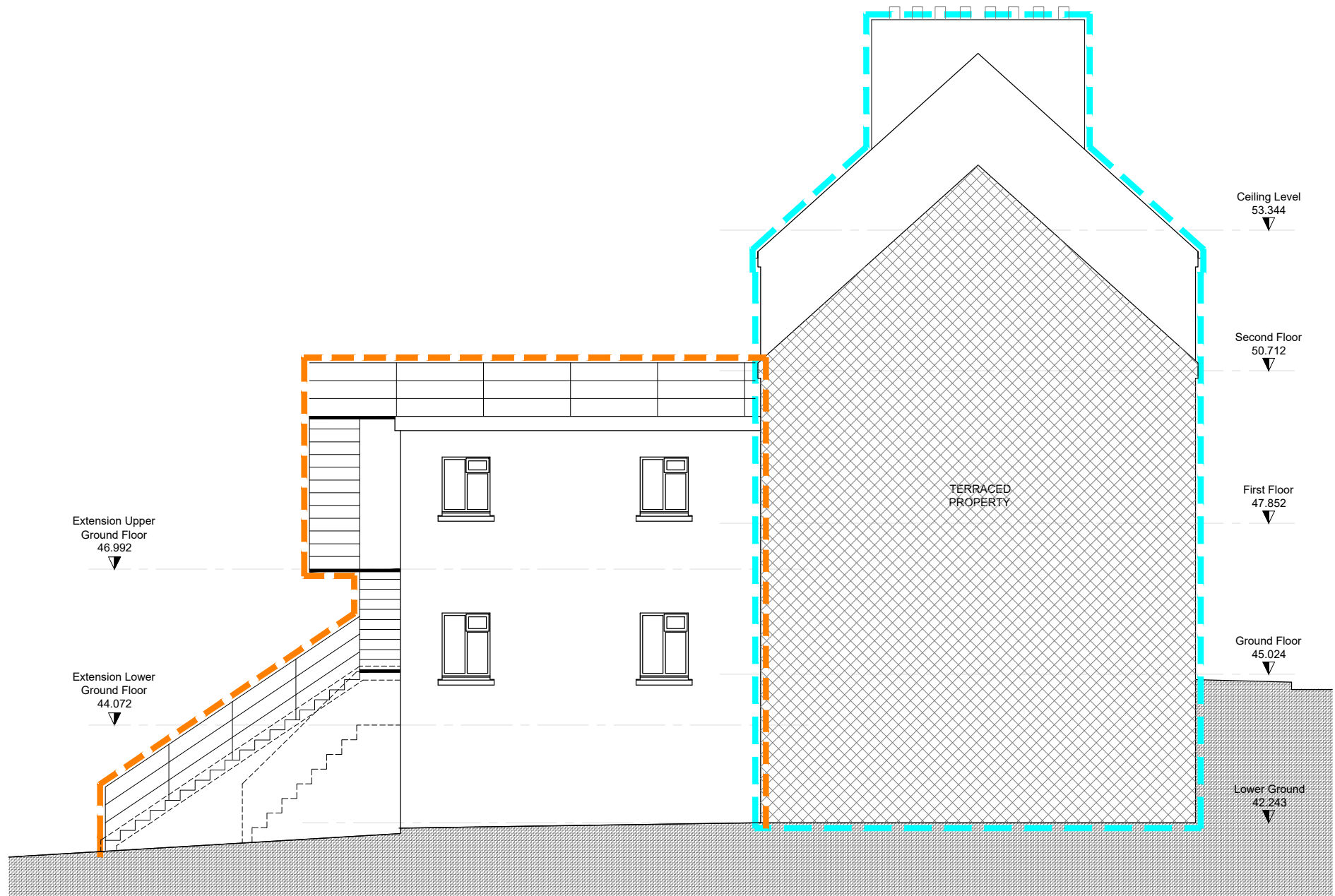
PROJECT:
 36 CONNAUGHT STREET
 ATHLONE, Co WESTMEATH

TITLE:
 EXISTING SIDE ELEVATION 1 of 2

Scale: 1:100@A3	Datum: ITM	Date: AUG '23
Drawing No. 107a_EX-202a	Stage 179A	Revision
Surveyed	Drawn	Checked
JH	PH	PH

FILE NAME AND DIRECTORY:
 36 EXISTING.dwg
 H:\CAPITAL HOUSING DESIGN TEAM1-Capital Schemes\107a 36 Connaught St\DRAWINGS\3. Part 8 -Planning\2. DWG\1:1000 General Arrangement

SECTION 179A



SIDE ELEVATION
1:100 @ A3

LEGEND

- - - - - • Protected [Retain and make good]
- - - - - • Demolish

REV.	DESCRIPTION.	DATE.	BY.

HOUSING CAPITAL
 WESTMEATH COUNTY COUNCIL
 CIVIC CENTRE, CHURCH ST.
 ATHLONE, N37 P2T5
 Phone: 0906442100
 Web: www.westmeathcoco.ie

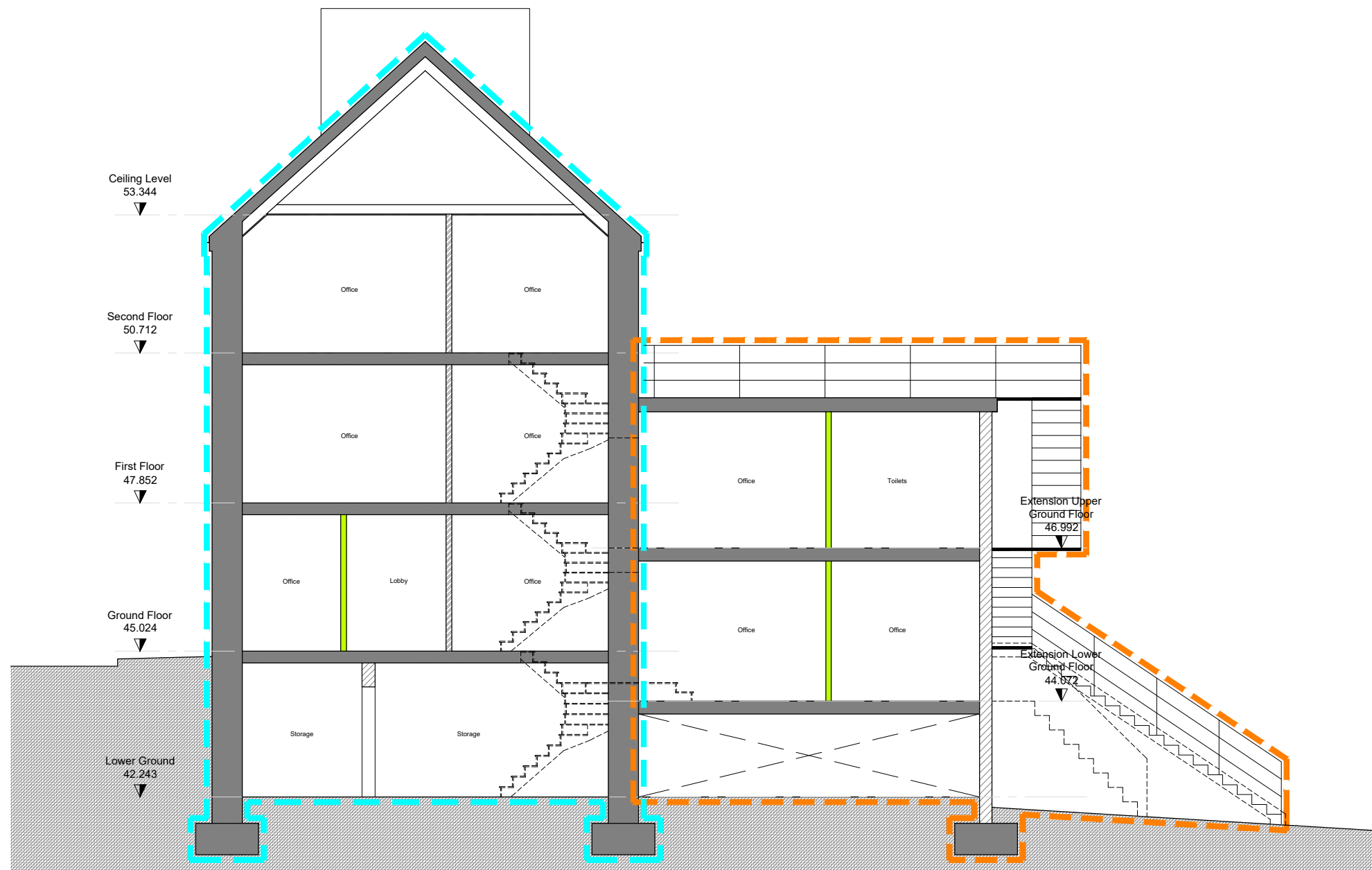
PROJECT:
 36 CONNAUGHT STREET
 ATHLONE, Co WESTMEATH

TITLE:
 EXISTING SIDE ELEVATION 2 of 2

Scale: 1:100@A3	Datum: ITM	Date: AUG '23
Drawing No. 107a_EX-202b	Stage 179A	Revision
Surveyed	Drawn	Checked
JH	PH	PH

FILE NAME AND DIRECTORY:
 36 EXISTING.dwg
 HICAPITAL HOUSING DESIGN TEAM1-Capital Schemes\107a 36 Connaught S\DRAWINGS\3. Part
 8 -Planning\2. DWG\1:1000 General Arrangement

SECTION 179A



SECTION A-A
1:100 @ A3

LEGEND

- - - - • Protected [Retain and make good]
- - - - • Demolish

REV.	DESCRIPTION	DATE	BY.

HOUSING CAPITAL
 WESTMEATH COUNTY COUNCIL
 CIVIC CENTRE, CHURCH ST.
 ATHLONE, N37 P2T5
 Phone: 0906442100
 Web: www.westmeathcoco.ie

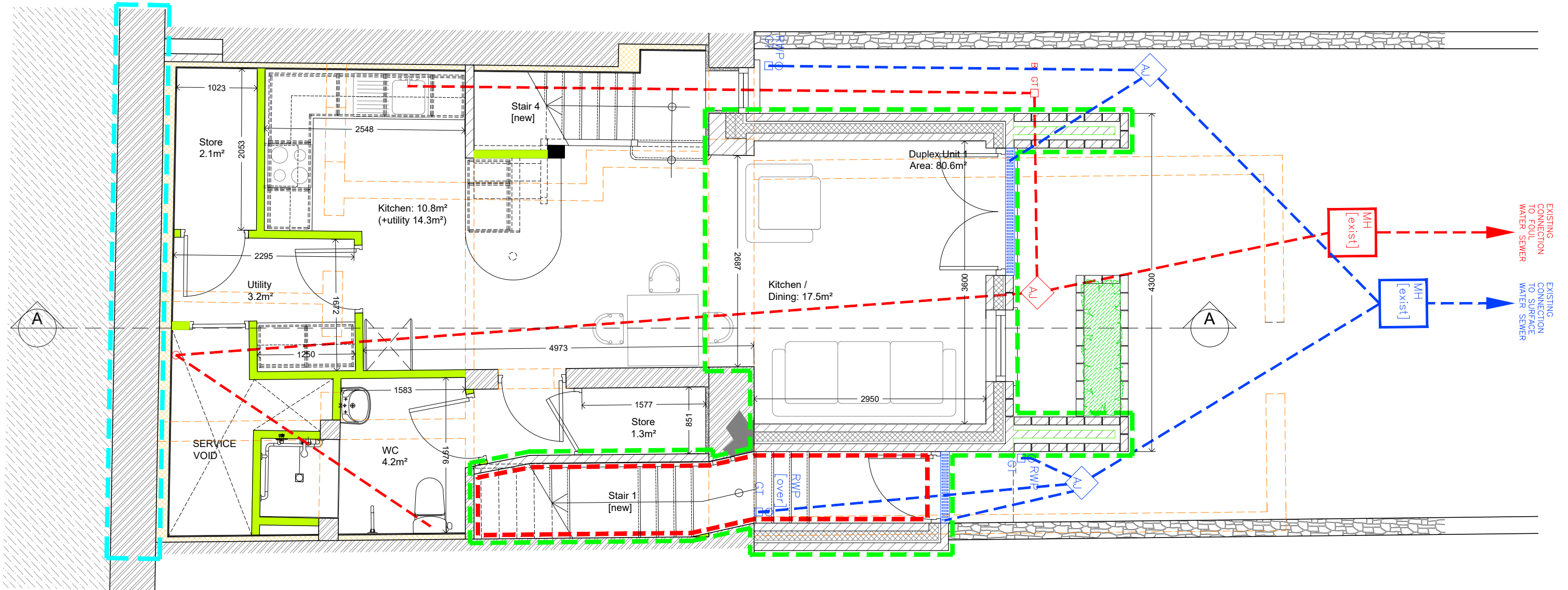
PROJECT:
 36 CONNAUGHT STREET
 ATHLONE, Co WESTMEATH

TITLE:
 EXISTING SECTION A-A

Scale: 1:100@A3	Datum: ITM	Date: AUG '23
Drawing No.	Stage	Revision
107a_EX-203	179A	
Surveyed	Drawn	Checked
	JH	PMC
		PH

FILE NAME AND DIRECTORY:
 36 EXISTING.dwg
 H:\CAPITAL HOUSING DESIGN TEAM\1-Capital Schemes\107a 36 Connaught St\DRAWINGS\3. Part
 8 -Planning\2. DWG\1:1000 General Arrangement

SECTION 179A



-01: BASEMENT PLAN
1:50 @ A3

LEGEND

- Protected [Retain and make good]
- Demolish
- New Build
- 1Hr Fire Compartment

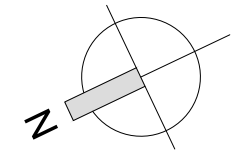
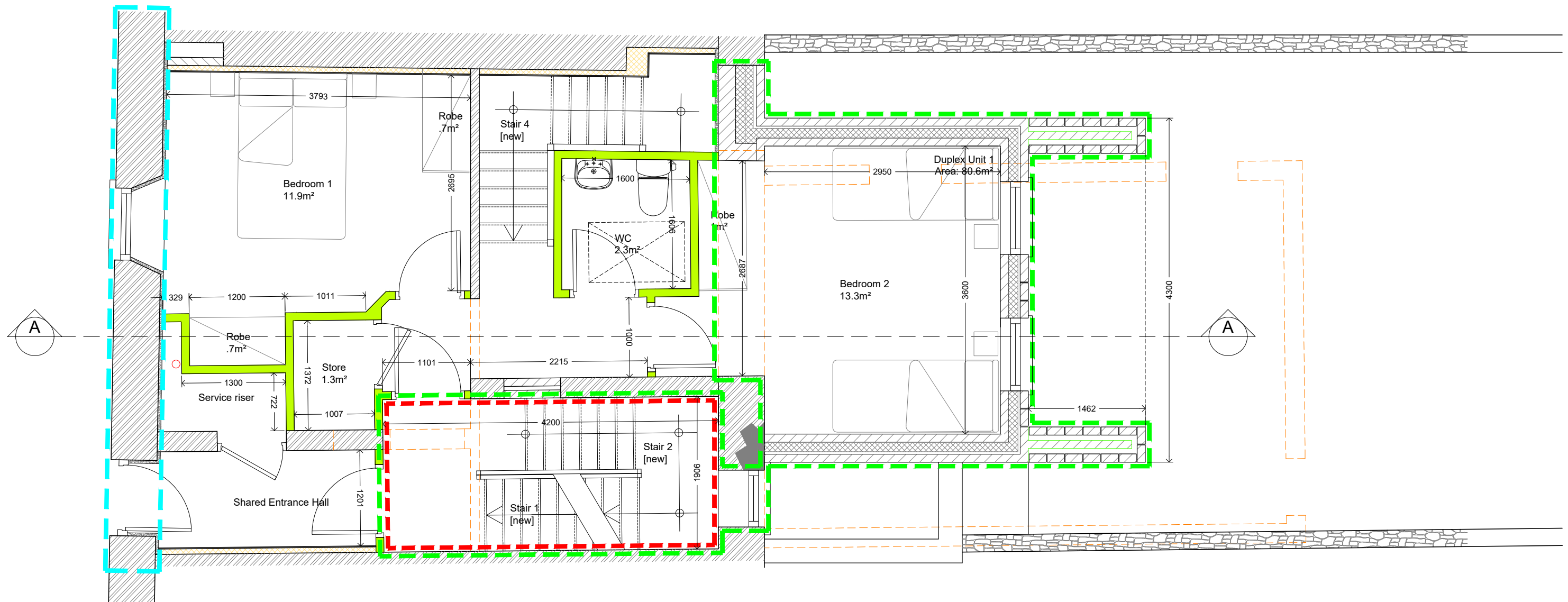


TABLE - SPACE PROVISION AND ROOM SIZES FOR TYPICAL DWELLINGS		Areas in accordance with Design Manual for Quality Housing, DOEHLG 2022			
Apartment Block 1	TARGET GROSS FLOOR AREA (m²)	AGGREGATE LIVING AREA (m²)	AGGREGATE BEDROOM AREA (m²)	STORAGE (m²)	Private Amenity Space (m²)
Type A - Duplex - Ground Floor 2 BED / 4 PERSON 2 STOREY	80.6m²		25.2m²	3.7m²	
	80.0m² (80m² + 10% = 88m²)		24.4m²		
Type A - Duplex - Lower Ground Floor		31.8m²		3.4m² [Total 6.3 excluded kitchen cabinets]	Rear Garden Access
		30m²		7.1m²	7.0m²
Type B - Apartment 1 BED / 2 PERSON APARTMENT	45.8m²	24.7m²	10.6m²	2.7m² [excluded kitchen cabinets]	5.0m²
	45.0m² (45m² + 10% = 49.5m²)	23.0m²	11.4m²	3.0m²	5.0m²
Type C - Apartment 1 BED / 2 PERSON APARTMENT	45.8m²	24.7m²	10.6m²	2.7m² [excluded kitchen cabinets]	5.0m²
	45.0m² (45m² + 10% = 49.5m²)	23.0m²	11.4m²	3.0m²	5.0m²

SECTION 179A

 WESTMEATH COUNTY COUNCIL Comhairle Chontae na hIarmhí	HOUSING CAPITAL WESTMEATH COUNTY COUNCIL CIVIC CENTRE, CHURCH ST. ATHLONE, N37 P2T5 Phone: 0906442100 Web: www.westmeathcoco.ie	
PROJECT: 36 CONNAUGHT STREET ATHLONE, Co WESTMEATH		
TITLE: PROPOSED BASEMENT FLOOR PLAN		
Scale: 1:50@A3	Datum: ITM	Date: AUG '23
Drawing No. 107a_100	Stage 179A	Revision
Surveyed JH	Drawn JH	Checked PMC
		Approved PH
<small>FILE NAME AND DIRECTORY: 36_FINAL_FULL_2.dwg H\CAPITAL HOUSING DESIGN TEAM\1-Capital Schemes\107a 36 Connaught ST\DRAWINGS\3. Part 8-Planning\2. DWG\1000 General Arrangement</small>		



00: GROUND FLOOR PLAN
1:50 @ A3

LEGEND

- - - - • Protected [Retain and make good]
- - - - • Demolish
- - - - • New Build
- - - - • 1Hr Fire Compartment

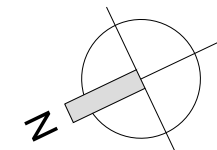
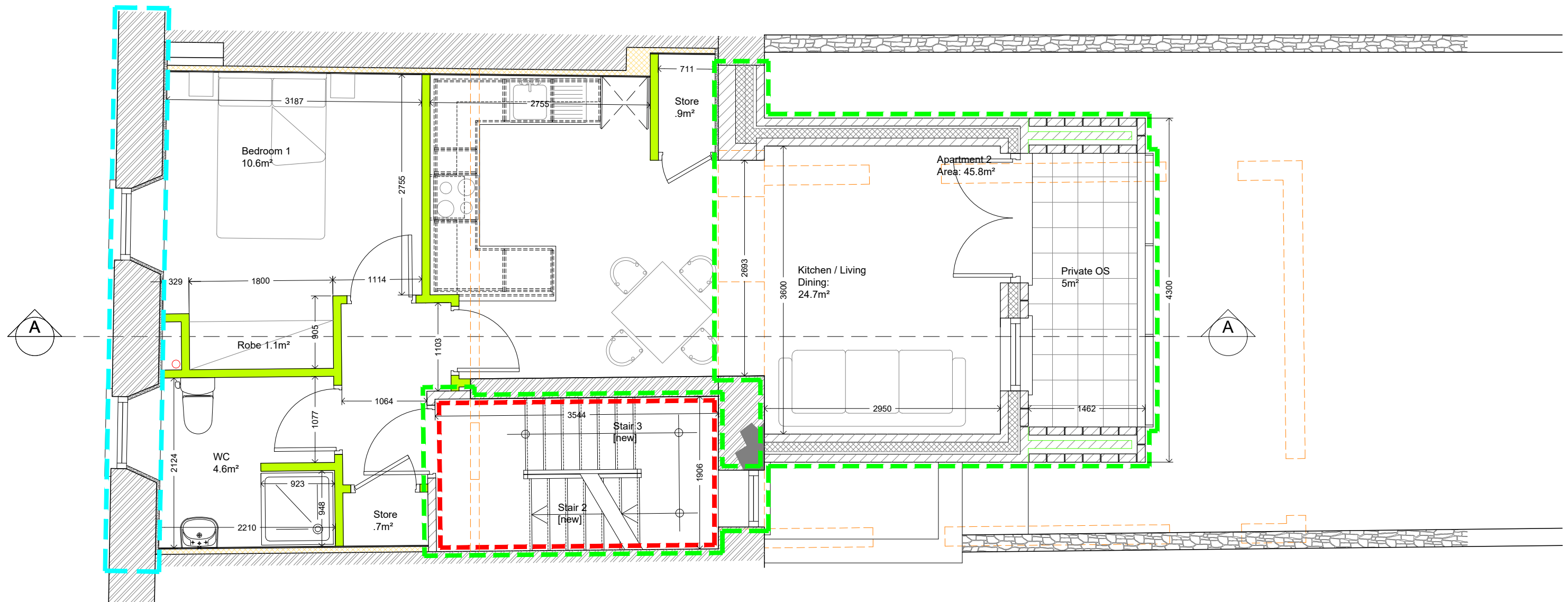


TABLE - SPACE PROVISION AND ROOM SIZES FOR TYPICAL DWELLINGS		Areas in accordance with Design Manual for Quality Housing, DOEHLG 2022			
Apartment Block 1	TARGET GROSS FLOOR AREA (m ²)	AGGREGATE LIVING AREA (m ²)	AGGREGATE BEDROOM AREA (m ²)	STORAGE (m ²)	Private Amenity Space (m ²)
Type A - Duplex - Ground Floor					
2 BED / 4 PERSON 2 STOREY	80.6m ²		25.2m ²	3.7m ²	
	80.0m ² (80m ² + 10% = 88m ²)		24.4m ²		
Type A - Duplex - Lower Ground Floor		31.8m ²		3.4m ² [Total 6.3 excluded kitchen cabinets]	Rear Garden Access
		30m ²		7.1m ²	7.0m ²
Type B - Apartment					
1 BED / 2 PERSON APARTMENT	45.8m ²	24.7m ²	10.6m ²	2.7m ² [excluded kitchen cabinets]	5.0m ²
	45.0m ² (45m ² + 10% = 49.5m ²)	23.0m ²	11.4m ²	3.0m ²	5.0m ²
Type C - Apartment					
1 BED / 2 PERSON APARTMENT	45.8m ²	24.7m ²	10.6m ²	2.7m ² [excluded kitchen cabinets]	5.0m ²
	45.0m ² (45m ² + 10% = 49.5m ²)	23.0m ²	11.4m ²	3.0m ²	5.0m ²

SECTION 179A

 WESTMEATH COUNTY COUNCIL Comhairle Chontae na hIarmhí	HOUSING CAPITAL WESTMEATH COUNTY COUNCIL CIVIC CENTRE, CHURCH ST. ATHLONE, N37 P2T5 Phone: 0906442100 Web: www.westmeathcoco.ie	
PROJECT: 36 CONNAUGHT STREET ATHLONE, Co WESTMEATH		
TITLE: PROPOSED GROUND FLOOR PLAN		
Scale: 1:50@A3	Datum: ITM	Date: AUG '23
Drawing No. 107a_101	Stage 179A	Revision
Surveyed	Drawn	Checked
	JH	PWC
		PH
<small>FILE NAME AND DIRECTORY: 36_FINAL_FULL_2.dwg H\CAPITAL HOUSING DESIGN TEAM\1-Capital Schemes\107a 36 Connaught St\DRAWINGS\3. Part 8-Planning\2. DWG\1000 General Arrangement</small>		



01: FIRST FLOOR PLAN
1:50 @ A3

LEGEND

- Protected [Retain and make good]
- Demolish
- New Build
- 1Hr Fire Compartment

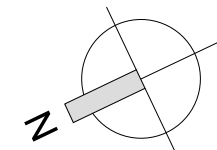
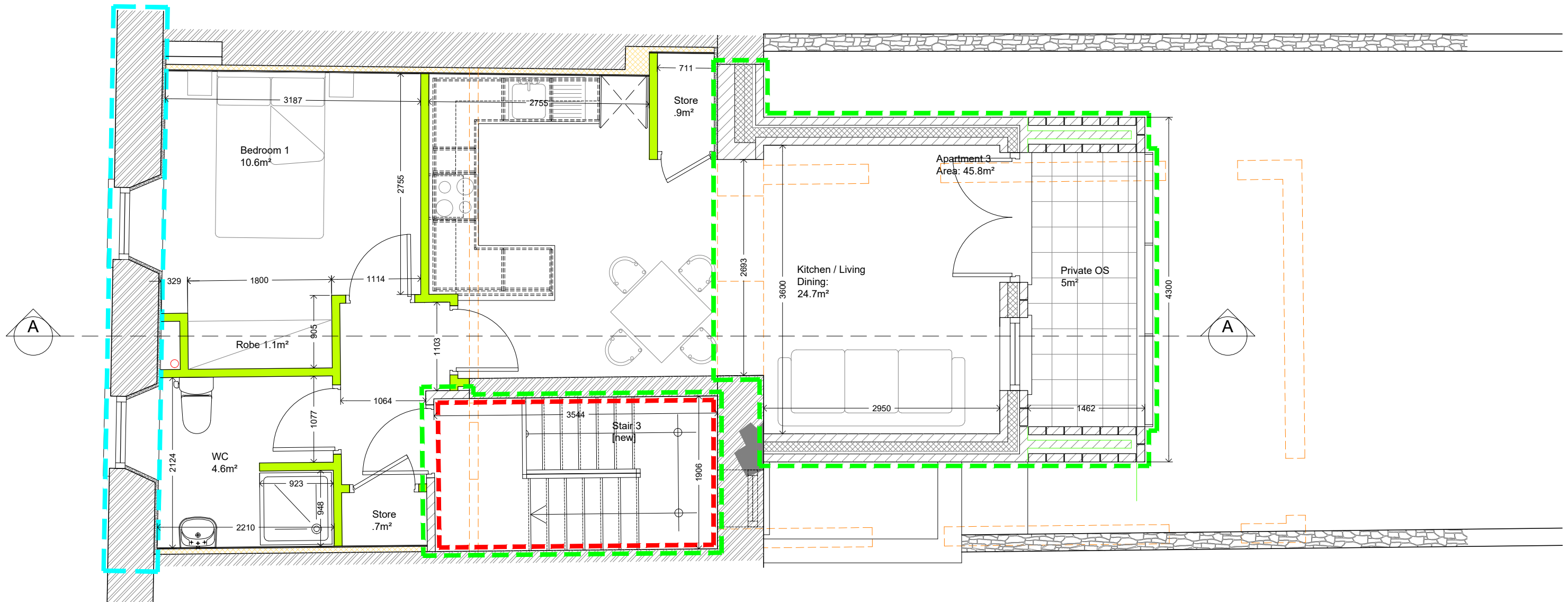


TABLE - SPACE PROVISION AND ROOM SIZES FOR TYPICAL DWELLINGS		Areas in accordance with Design Manual for Quality Housing, DOEHLG 2022			
Apartment Block 1	TARGET GROSS FLOOR AREA (m ²)	AGGREGATE LIVING AREA (m ²)	AGGREGATE BEDROOM AREA (m ²)	STORAGE (m ²)	Private Amenity Space (m ²)
Type A - Duplex - Ground Floor 2 BED / 4 PERSON 2 STOREY	80.6m ²		25.2m ²	3.7m ²	
	80.0m ² (80m ² + 10% = 88m ²)		24.4m ²		
Type A - Duplex - Lower Ground Floor		31.8m ²		3.4m ² [Total 6.3 excluded kitchen cabinets]	Rear Garden Access
		30m ²		7.1m ²	7.0m ²
Type B - Apartment 1 BED / 2 PERSON APARTMENT	45.8m ²	24.7m ²	10.6m ²	2.7m ² [excluded kitchen cabinets]	5.0m ²
	45.0m ² (45m ² + 10% = 49.5m ²)	23.0m ²	11.4m ²	3.0m ²	5.0m ²
Type C - Apartment 1 BED / 2 PERSON APARTMENT	45.8m ²	24.7m ²	10.6m ²	2.7m ² [excluded kitchen cabinets]	5.0m ²
	45.0m ² (45m ² + 10% = 49.5m ²)	23.0m ²	11.4m ²	3.0m ²	5.0m ²

SECTION 179A

 WESTMEATH COUNTY COUNCIL Comhairle Chontae na hIarmhí PROJECT: 36 CONNAUGHT STREET ATHLONE, Co WESTMEATH	HOUSING CAPITAL WESTMEATH COUNTY COUNCIL CIVIC CENTRE, CHURCH ST. ATHLONE, N37 P2T5 Phone: 0906442100 Web: www.westmeathcoco.ie
TITLE: PROPOSED FIRST FLOOR PLAN	
Scale: 1:50@A3 Drawing No.: 107a_102	Datum: ITM Stage: 179A Date: AUG '23 Revision:
Surveyed: JH Drawn: JH Checked: PWC Approved: PH	Date: AUG '23 Stage: 179A Revision:
<small>FILE NAME AND DIRECTORY: 36_FINAL_FULL_2.dwg H\CAPITAL HOUSING DESIGN TEAM\1-Capital Schemes\107a 36 Connaught St\DRAWINGS\3. Part 8-Planning\2. DWG\1000 General Arrangement</small>	



02: SECOND FLOOR PLAN
1:50 @ A3

LEGEND

- - - - • Protected [Retain and make good]
- - - - • Demolish
- - - - • New Build
- - - - • 1Hr Fire Compartment

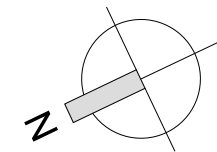


TABLE - SPACE PROVISION AND ROOM SIZES FOR TYPICAL DWELLINGS		Areas in accordance with Design Manual for Quality Housing, DOEHLG 2022			
Apartment Block 1	TARGET GROSS FLOOR AREA (m ²)	AGGREGATE LIVING AREA (m ²)	AGGREGATE BEDROOM AREA (m ²)	STORAGE (m ²)	Private Amenity Space (m ²)
Type A - Duplex - Ground Floor 2 BED / 4 PERSON 2 STOREY	80.6m ²		25.2m ²	3.7m ²	
	80.0m ² (80m ² + 10% = 88m ²)		24.4m ²		
Type A - Duplex - Lower Ground Floor		31.8m ²		3.4m ² [Total 6.3 excluded kitchen cabinets]	Rear Garden Access
		30m ²		7.1m ²	7.0m ²
Type B - Apartment 1 BED / 2 PERSON APARTMENT	45.8m ²	24.7m ²	10.6m ²	2.7m ² [excluded kitchen cabinets]	5.0m ²
	45.0m ² (45m ² + 10% = 49.5m ²)	23.0m ²	11.4m ²	3.0m ²	5.0m ²
Type C - Apartment 1 BED / 2 PERSON APARTMENT	45.8m ²	24.7m ²	10.6m ²	2.7m ² [excluded kitchen cabinets]	5.0m ²
	45.0m ² (45m ² + 10% = 49.5m ²)	23.0m ²	11.4m ²	3.0m ²	5.0m ²

SECTION 179A

 WESTMEATH COUNTY COUNCIL Comhairle Chontae na hIarmhí PROJECT: 36 CONNAUGHT STREET ATHLONE, Co WESTMEATH	HOUSING CAPITAL WESTMEATH COUNTY COUNCIL CIVIC CENTRE, CHURCH ST. ATHLONE, N37 P2T5 Phone: 0906442100 Web: www.westmeathcoco.ie
TITLE: PROPOSED SECOND FLOOR PLAN	
Scale: 1:50@A3 Drawing No.: 107a_103	Datum: ITM Stage: 179A
Date: AUG '23 Surveyed: JH Drawn: JH	Revision: Checked: PWC Approved: PH
<small>FILE NAME AND DIRECTORY: 36_FINAL_FULL_2.dwg H\CAPITAL HOUSING DESIGN TEAM\1-Capital Schemes\107a 36 Connaught St\DRAWINGS\3. Part 8 - Planning\2. DWG\1000 General Arrangement</small>	



PROPOSED FRONT ELEVATION
1:50 @ A3

LEGEND

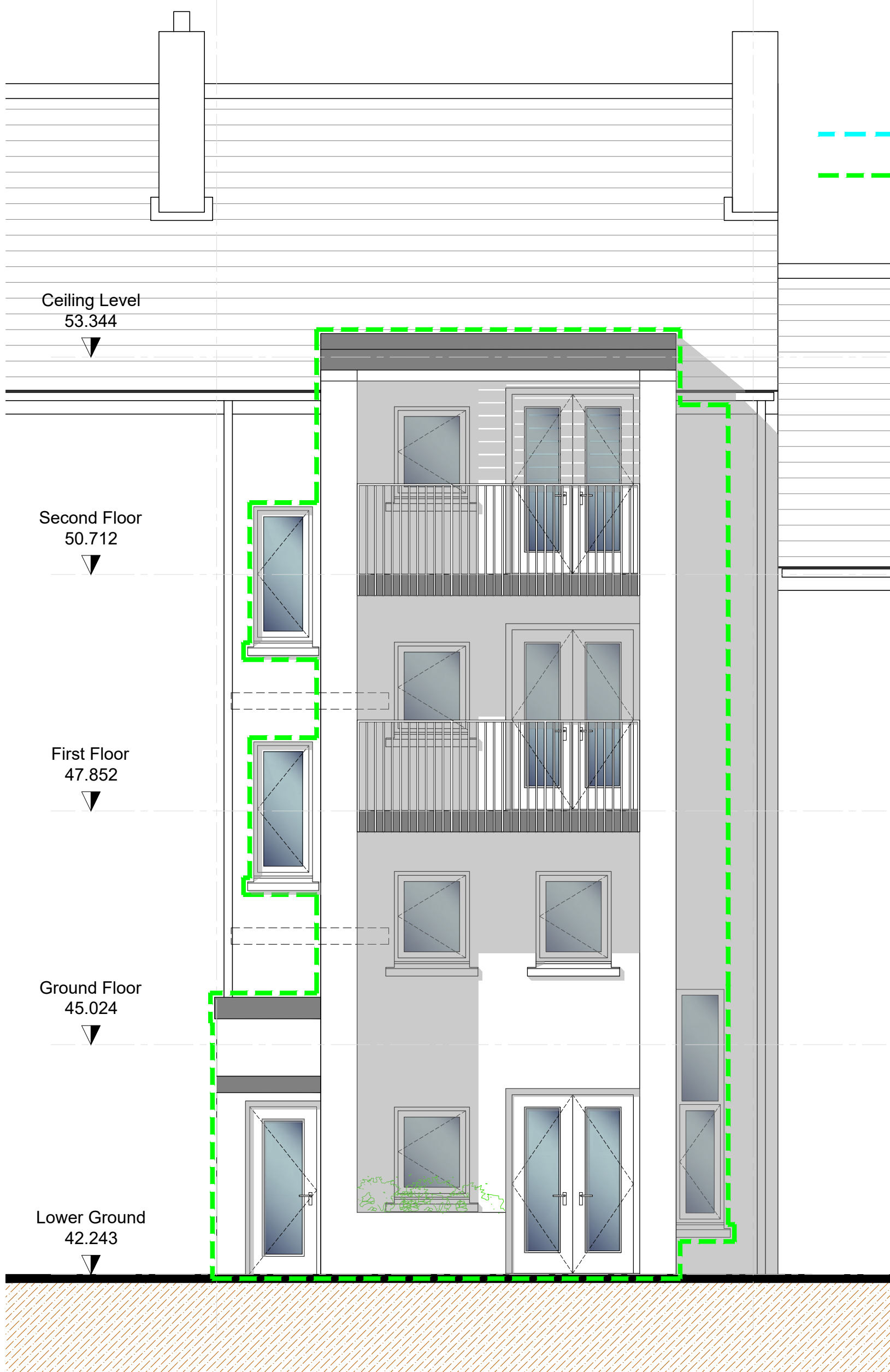
- - - • Protected [Retain and make good]
- - - • New Build

SECTION 179A

REV.	DESCRIPTION.	DATE.	BY.
WESTMEATH COUNTY COUNCIL <small>Comhairle Chontae na hIarmhí</small> WESTMEATH COUNTY COUNCIL CIVIC CENTRE, CHURCH ST. ATHLONE, N37 P2T5 Phone: 0906442100 Web: www.westmeathcoco.ie			
PROJECT: 36 CONNAUGHT STREET ATHLONE, Co WESTMEATH			
TITLE: PROPOSED FRONT ELEVATION			
Scale: 1:50@A3	Datum:	Date: AUG '23	
Drawing No. 107a_200	Stage 179A	Revision	
Surveyed	Drawn	Checked	Approved
	JH	PWC	PJH
<small>FILE NAME AND DIRECTORY: 36_FINAL_FULL_2.dwg H-CAPITAL_HOUSING DESIGN TEAM\1-Capital Schemes\107a 36 Connaught SRDRAWINGS\3. Part 8 -Planning\2. DWG\11000 General Arrangement</small>			

LEGEND

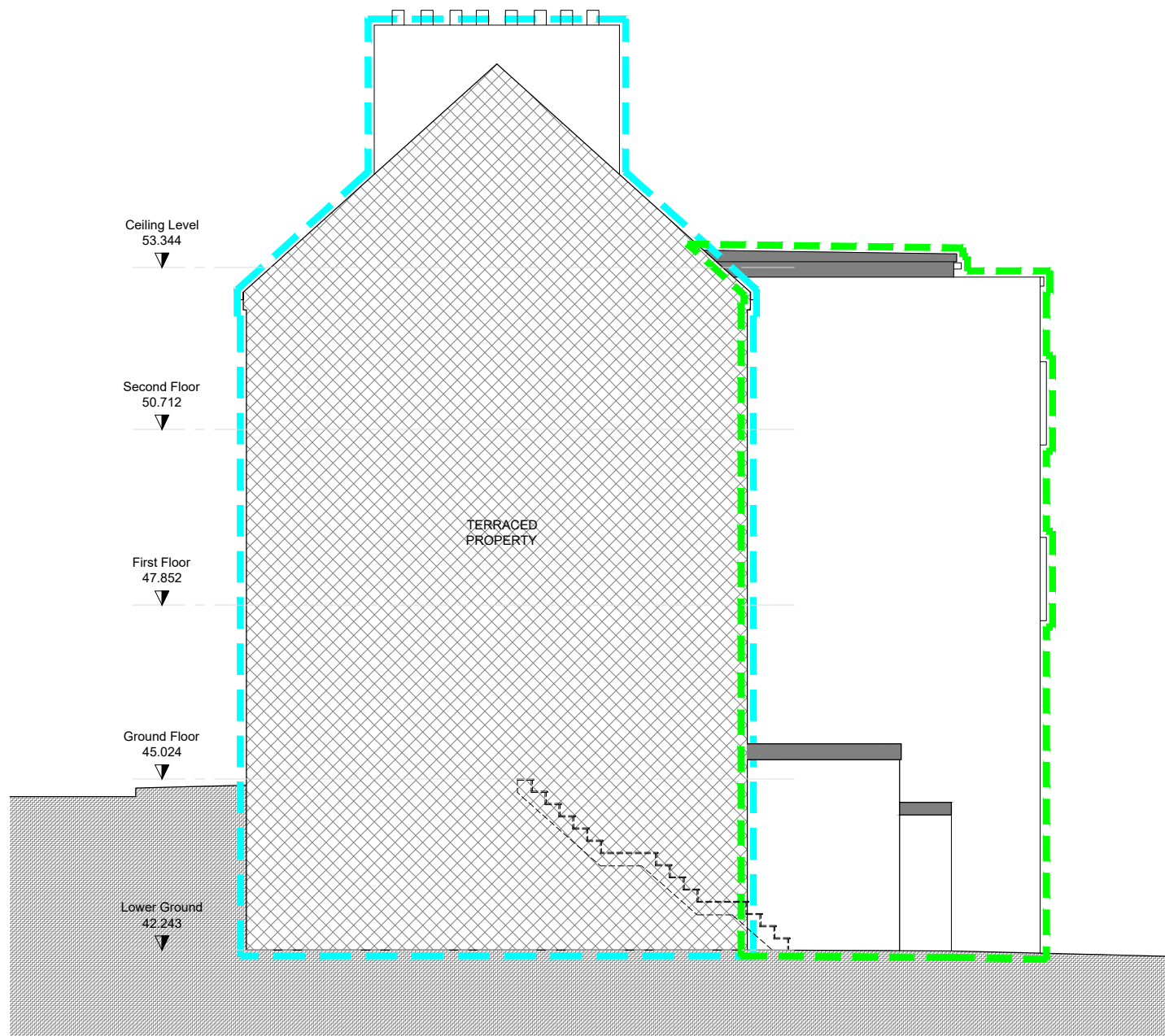
- Protected [Retain and make good]
- New Build



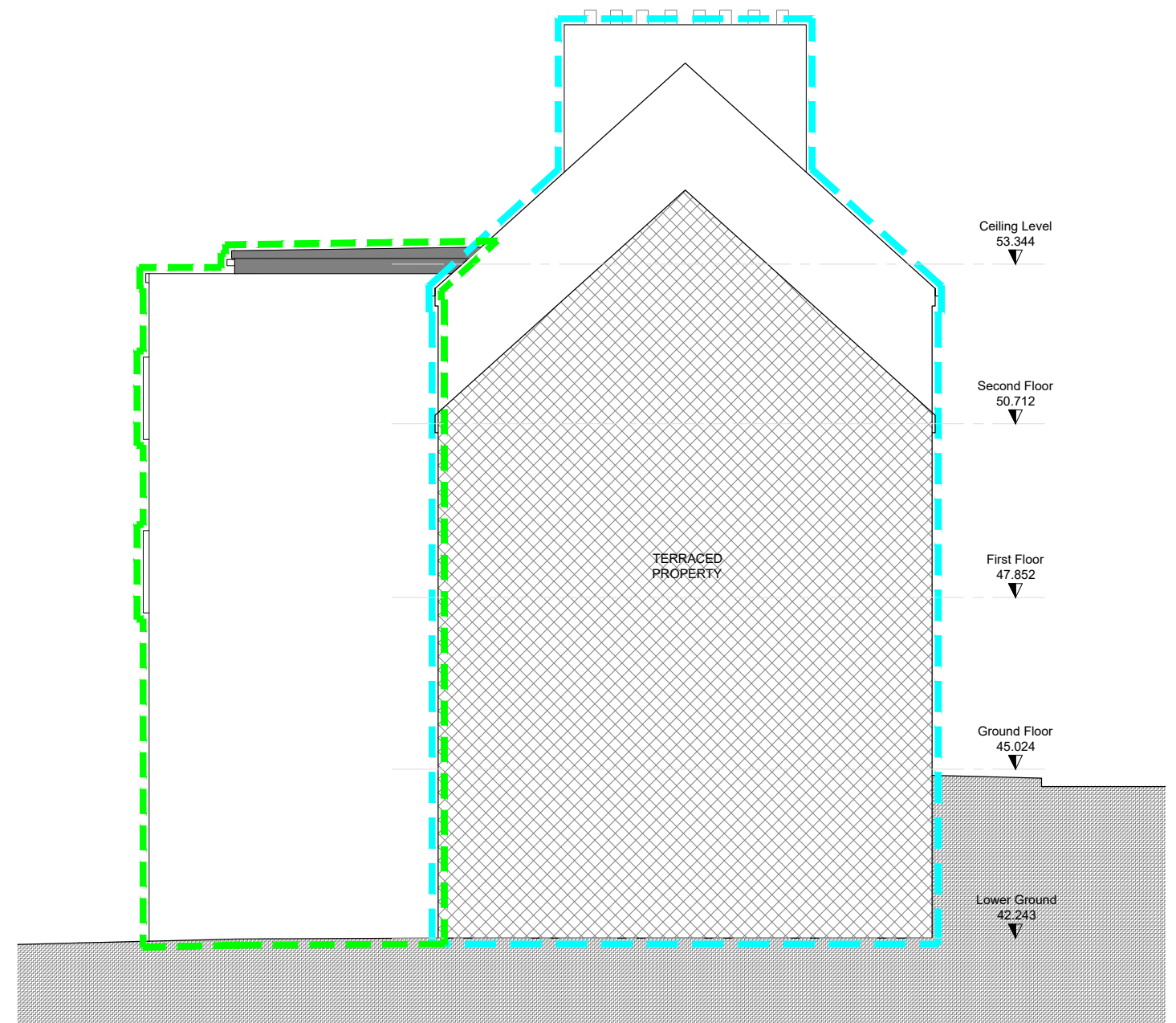
PROPOSED REAR ELEVATION
1:50 @ A3

SECTION 179A

REV.	DESCRIPTION.	DATE.	BY.
<p>WESTMEATH COUNTY COUNCIL Cíviciúil Chontae na hIarmhí</p> <p>HOUSING CAPITAL WESTMEATH COUNTY COUNCIL CIVIC CENTRE, CHURCH ST. ATHLONE, N37 P2T5 Phone: 0906442100 Web: www.westmeathcoco.ie</p>			
PROJECT:			
36 CONNAUGHT STREET ATHLONE, Co WESTMEATH			
TITLE:			
PROPOSED REAR ELEVATION			
Scale: 1:50@A3		Datum:	Date: AUG 23
Drawing No.	Stage	Revision	
107a_201	179A		
Surveyed	Drawn	Checked	Approved
	JH	PWC	PJH
<small>FILE NAME AND DIRECTORY: 36_FINAL_FULL_2.dwg H\CAPITAL_HOUSING_DESIGN_TEAM\1-Capital Schemes\107a 36 Connaught SRDRAWINGS\3. Part 8 -Planning\2. DWG\1000 General Arrangement</small>			



SIDE ELEVATION
1:100 @ A3



SIDE ELEVATION
1:100 @ A3

LEGEND

- - - - • Protected [Retain and make good]
- - - - • New Build

REV.	DESCRIPTION.	DATE.	BY.

HOUSING CAPITAL
 WESTMEATH COUNTY COUNCIL
 CIVIC CENTRE, CHURCH ST.
 ATHLONE, N37 P2T5
 Phone: 0906442100
 Web: www.westmeathcoco.ie

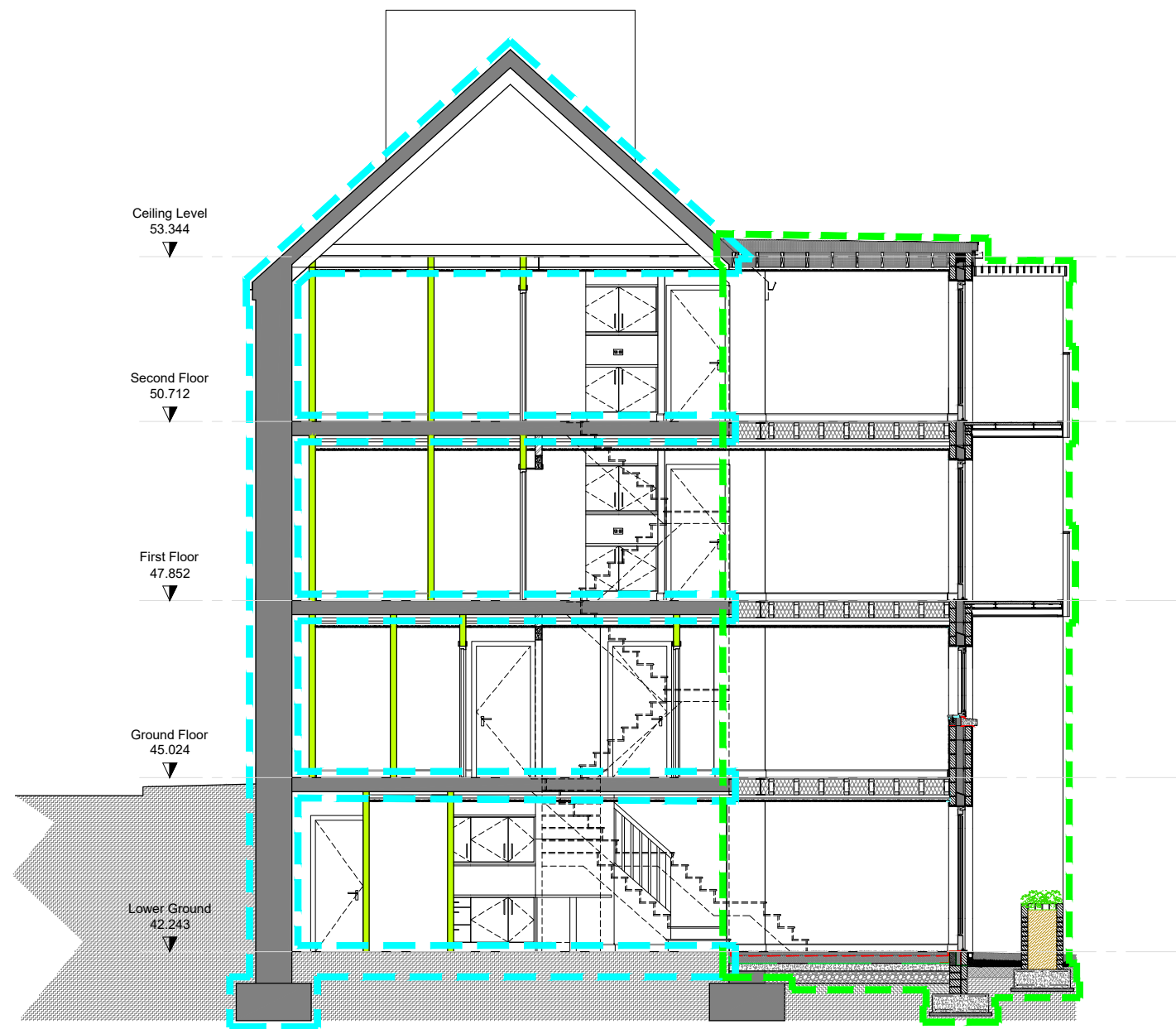
PROJECT:
**36 CONNAUGHT STREET
 ATHLONE, Co WESTMEATH**

TITLE:
PROPOSED SIDE ELEVATIONS

Scale: 1:100@A3	Datum: ITM	Date: AUG '23
Drawing No. 107a_202	Stage 179A	Revision
Surveyed	Drawn	Checked
JH	PH	PH

FILE NAME AND DIRECTORY:
 36_FINAL_FULL_2.dwg
 HICAPITAL HOUSING DESIGN TEAM1-Capital Schemes\107a 36 Connaught S\DRAWINGS\3. Part
 8 -Planning\2. DWG\1:1000 General Arrangement

SECTION 179A



SECTION A-A
1:100 @ A3

LEGEND

- - - - • Protected [Retain and make good]
- - - - • New Build

REV.	DESCRIPTION.	DATE.	BY.

HOUSING CAPITAL

WESTMEATH COUNTY COUNCIL
CIVIC CENTRE, CHURCH ST.
ATHLONE, N37 P2T5
Phone: 0906442100
Web: www.westmeathcoco.ie

PROJECT:
**36 CONNAUGHT STREET
ATHLONE , Co WESTMEATH**

TITLE:
PROPOSED SECTION A-A

Scale: 1:100@A3	Datum: ITM	Date: AUG '23
Drawing No. 107a_203	Stage 179A	Revision
Surveyed	Drawn	Checked
JH	PH	PH

FILE NAME AND DIRECTORY:
36_FINAL_FULL_2.dwg
H\CAPITAL HOUSING DESIGN TEAM\1-Capital Schemes\107a 36 Connaught St\DRAWINGS\3. Part
8 -Planning\2. DWG\1:1000 General Arrangement

SECTION 179A